

STH 441: CTH 00 TO CTH CE (OUTAGAMIE COUNTY) CONTINUOUS (24 HOUR) CLOSURE DIVERSION ROUTE: CTH CE - CTH N - CTH 00	MAY
	Analyzed for 2009 Construction Season

SUMMARY OF TRAFFIC MODEL OUTPUT

SUNDAY SOUTHBOUND DIRECTION

TIME OF DAY	FLOWS AND CAPACITY IN VEH/HR						AVERAGE SPEEDS IN MPH								
	MAIN ROUTE		ALTERNATE ROUTE		SITE CAPA CITY	FLOW MAIN ROUTE	FLOW DIVER -TING	TOTAL DIVN FLOW	AV.DEL PER VEH (MINS)	AVERAGE QUEUE (VEH)	MAIN ROUTE		ALTERNATE ROUTE		
	DEMAND FLOW	PCT HEAVY	NORMAL FLOW	PCT HEAVY							WITHOUT WORK ZN	WITH WORK ZN	SITE	WITHOUT WORK ZN	WITH WORK ZN
MID-1 AM	176	0.0	101	0.0	1500	176	0	101	0.44	0	66.1	53.2	44.8	24.1	24.1
1-2 AM	95	0.0	59	0.0	1500	95	0	59	0.43	0	66.2	53.5	45.1	24.4	24.4
2-3 AM	83	0.0	44	0.0	1500	83	0	44	0.43	0	66.3	53.5	45.1	24.5	24.5
3-4 AM	55	0.0	41	0.0	1500	55	0	41	0.43	0	66.3	53.6	45.3	24.5	24.5
4-5 AM	83	0.0	34	0.0	1500	83	0	34	0.43	0	66.3	53.5	45.1	24.6	24.6
5-6 AM	171	0.0	77	0.0	1500	171	0	77	0.44	0	66.1	53.2	44.8	24.2	24.2
6-7 AM	287	0.0	110	0.0	1500	287	0	110	0.45	0	65.8	52.8	44.3	24.0	24.0
7-8 AM	519	0.0	130	0.0	1500	519	0	130	0.47	0	65.4	52.0	43.4	23.8	23.8
8-9 AM	822	0.0	208	0.0	1500	822	0	208	0.50	0	64.8	51.0	42.3	23.2	23.2
9-10 AM	1214	0.0	290	0.0	1499	1214	0	290	0.65	0	64.1	47.6	38.2	22.6	22.6
10-11 AM	1462	0.0	394	0.0	1499	1462	0	394	1.01	1	63.7	41.5	31.7	21.8	21.8
11A-NOON	1587	0.0	425	0.0	1500	1587	0	425	2.50	43	63.4	27.3	30.8	21.5	21.5
NOON-1PM	1587	0.0	483	0.0	1499	1587	0	483	6.05	138	63.4	15.2	30.8	21.1	21.2
1-2 PM	1493	0.0	444	0.0	1499	1493	0	444	7.78	182	63.6	12.8	30.8	21.4	21.5
2-3 PM	1380	0.0	416	0.0	1499	1380	0	416	5.06	114	63.8	17.3	31.0	21.7	21.7
3-4 PM	1424	0.0	433	0.0	1500	1424	0	433	1.34	12	63.7	37.2	31.9	21.5	21.5
4-5 PM	1673	0.0	401	0.0	1499	1673	0	401	3.58	81	63.3	21.9	30.8	21.7	21.7
5-6 PM	1599	0.0	384	0.0	1499	1599	0	384	9.70	235	63.4	11.4	30.8	21.9	22.4
6-7 PM	1253	0.0	297	0.0	1499	1253	0	297	6.45	169	64.0	15.1	32.8	22.5	22.8
7-8 PM	937	0.0	242	0.0	1500	936	0	242	0.53	0	64.6	50.2	41.9	23.0	23.0
8-9 PM	708	0.0	210	0.0	1500	708	0	210	0.49	0	65.1	51.4	42.7	23.2	23.2
9-10 PM	489	0.0	165	0.0	1500	489	0	165	0.47	0	65.5	52.1	43.5	23.6	23.6
10-11 PM	303	0.0	107	0.0	1500	303	0	107	0.45	0	65.8	52.7	44.3	24.0	24.0
11PM-MID	182	0.0	52	0.0	1500	182	0	52	0.44	0	66.1	53.2	44.8	24.5	24.5

----- SITE BREAKDOWN DELAYS -----	
BREAKDOWN DURATION (MINS)	0
RANGE OF QUEUE DELAY - MIN	0.0
(VEH-H) MAX	0.0
RANGE OF DIVN DELAY - MIN	0.0
(VEH-H) MAX	0.0
AV BREAKDOWNS PER DAY	0.00
AV QUEUE DELAY/DAY (VEH-H)	0.0
AV DIVN DELAY/DAY (VEH-H)	0.0
AV TOTAL DELAY/DAY (VEH-H)	0.0

----- SITE ACCIDENT DELAYS -----	
ACCIDENT DURATION (MINS)	0
RANGE OF QUEUE DELAY - MIN	0.0
(VEH-H) MAX	0.0
RANGE OF DIVN DELAY - MIN	0.0
(VEH-H) MAX	0.0
AV ACCIDENTS PER DAY	0.00
AV QUEUE DELAY/DAY (VEH-H)	0.0
AV DIVN DELAY/DAY (VEH-H)	0.0
AV TOTAL DELAY/DAY (VEH-H)	0.0

AVERAGE ACCIDENT NUMBERS (PIA/DAY)	
MAIN ROUTE WITHOUT WORKS	0.0062
MAIN ROUTE WITH WORKS	0.0049
DIVERSION	0.0411

PIA: Personal Injury Accidents

IMPACTS ON ROAD USERS	
ROAD USER COSTS PER DAY (DOLLARS)	\$20,747
CONGESTED HOURS PER DAY*	0

*Delays Exceeding 15 Minutes

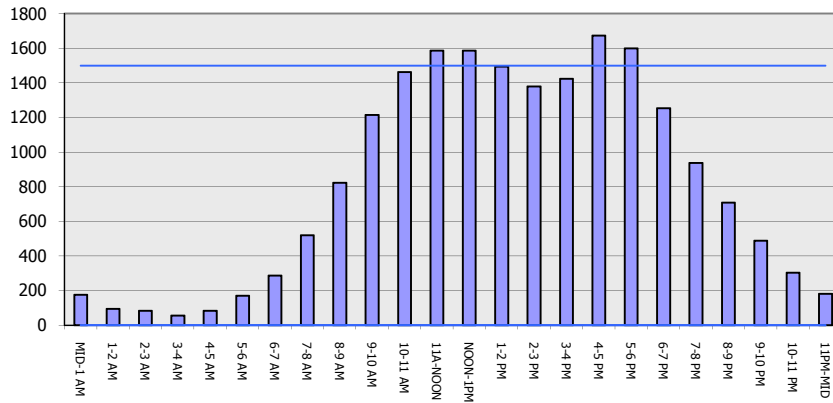
STH 441: CTH 00 TO CTH CE (OUTAGAMIE COUNTY)
CONTINUOUS (24 HOUR) CLOSURE
DIVERSION ROUTE: CTH CE - CTH N - CTH 00

MAY
 Analyzed for 2009
 Construction Season

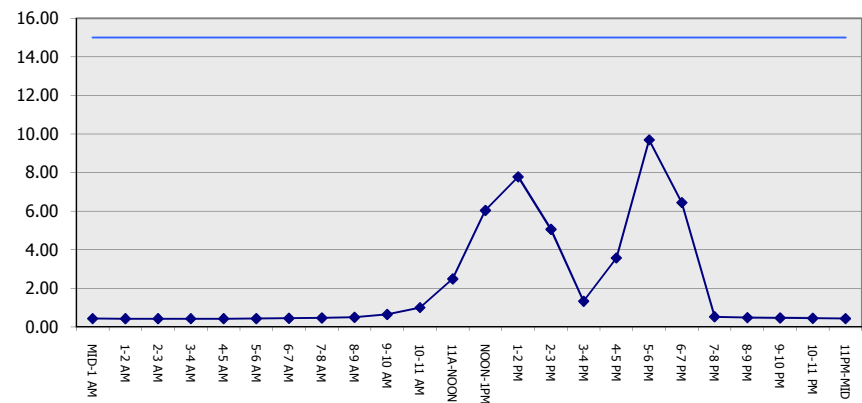
GRAPHICAL REPRESENTATION OF TRAFFIC MODEL INPUT AND OUTPUT

SUNDAY SOUTHBOUND DIRECTION

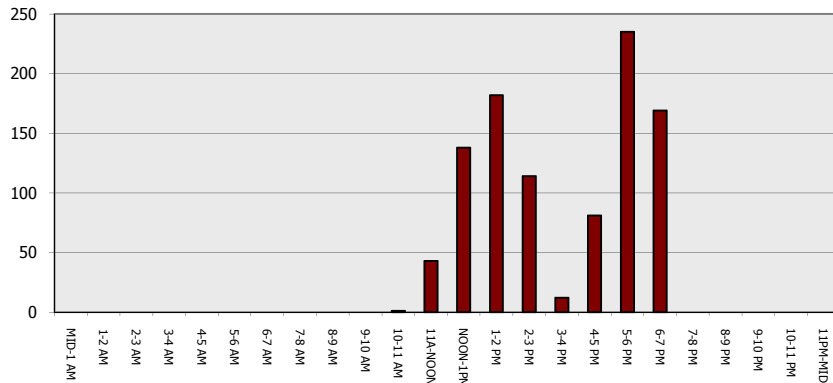
Main Route - Traffic Demand (Vehicles Per Hour)



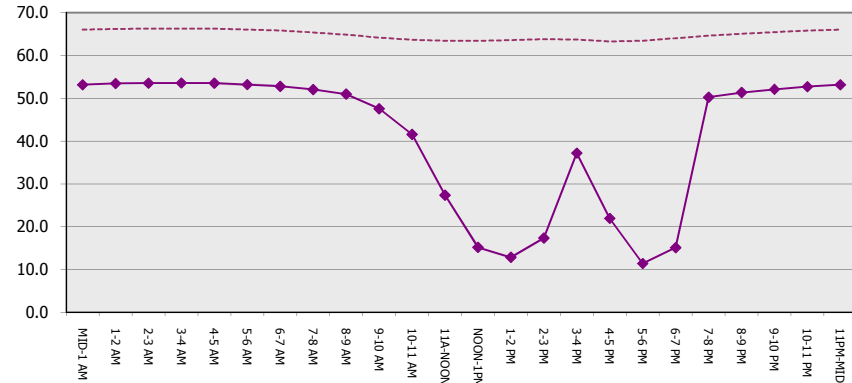
Main Route Average Delay Per Vehicle (Minutes)



Main Route - Average Queue Length (Vehicles)



Main Route - Average Speed (MPH)



**STH 441: CTH 00 TO CTH CE (OUTAGAMIE COUNTY)
CONTINUOUS (24 HOUR) CLOSURE
DIVERSION ROUTE: CTH CE - CTH N - CTH 00**

MAY
Analyzed for 2009
Construction Season

SUMMARY OF TRAFFIC MODEL OUTPUT

SUNDAY NORTHBOUND DIRECTION

TIME OF DAY	FLOWS AND CAPACITY IN VEH/HR							AVERAGE SPEEDS IN MPH			AVERAGE SPEEDS IN MPH				
	MAIN		DIVERSION		SITE CAPA CITY	FLOW MAIN ROUTE	FLOW DIVER -TING	TOTAL DIVN FLOW	AV.DEL PER VEH (MINS)	AVERAGE QUEUE (VEH)	MAIN ROUTE		ALTERNATE ROUTE		
	DEMAND FLOW	PCT HEAVY	NORMAL FLOW	PCT HEAVY							WITHOUT WORK ZN	WITH WORK ZN	SITE	WITHOUT WORK ZN	WITH WORK ZN
MID-1 AM	202	0.0	108	0.0	1500	202	0	108	0.44	0	66.0	53.1	44.6	24.0	24.0
1-2 AM	97	0.0	68	0.0	1500	97	0	68	0.43	0	66.2	53.5	45.1	24.3	24.3
2-3 AM	89	0.0	60	0.0	1500	89	0	60	0.43	0	66.2	53.5	45.1	24.4	24.4
3-4 AM	74	0.0	39	0.0	1500	74	0	39	0.43	0	66.3	53.5	45.2	24.5	24.5
4-5 AM	90	0.0	30	0.0	1500	90	0	30	0.43	0	66.2	53.5	45.1	24.6	24.6
5-6 AM	131	0.0	69	0.0	1500	131	0	69	0.44	0	66.1	53.3	45.0	24.3	24.3
6-7 AM	191	0.0	134	0.0	1500	191	0	134	0.44	0	66.0	53.2	44.7	23.8	23.8
7-8 AM	341	0.0	128	0.0	1500	341	0	128	0.46	0	65.8	52.6	44.1	23.8	23.8
8-9 AM	626	0.0	218	0.0	1500	626	0	218	0.48	0	65.2	51.7	43.0	23.2	23.2
9-10 AM	1129	0.0	302	0.0	1499	1129	0	302	0.61	0	64.3	48.4	39.1	22.5	22.5
10-11 AM	1676	0.0	414	0.0	1499	1676	0	414	2.84	63	63.3	25.3	30.8	21.7	21.7
11A-NOON	1925	0.0	420	0.0	1500	1812	113	533	13.92	361	62.8	9.6	30.8	21.6	21.9
NOON-1PM	1933	0.0	526	0.0	1499	1530	403	929	19.87	509	62.8	8.1	30.8	20.8	19.4
1-2 PM	1898	0.0	528	0.0	1499	1490	408	936	19.94	511	62.8	8.1	30.8	20.8	19.4
2-3 PM	1922	0.0	536	0.0	1500	1513	409	945	20.03	513	62.8	8.1	30.8	20.7	19.3
3-4 PM	2059	0.0	562	0.0	1500	1547	513	1075	21.37	550	62.5	7.9	30.8	20.6	18.4
4-5 PM	2090	0.0	574	0.0	1499	1506	584	1158	22.32	576	62.5	7.8	30.8	20.4	17.9
5-6 PM	1923	0.0	581	0.0	1499	1442	481	1062	21.24	546	62.8	7.9	30.8	20.4	18.6
6-7 PM	1628	0.0	508	0.0	1499	1409	220	728	18.13	462	63.3	8.4	30.8	20.9	20.8
7-8 PM	1367	0.0	394	0.0	1499	1353	14	408	14.40	362	63.8	9.4	30.8	21.8	22.8
8-9 PM	1111	0.0	339	0.0	1499	1111	0	339	2.98	115	64.3	25.3	36.8	22.2	22.4
9-10 PM	756	0.0	222	0.0	1500	756	0	222	0.50	0	65.0	51.2	42.5	23.2	23.2
10-11 PM	474	0.0	168	0.0	1500	474	0	168	0.47	0	65.5	52.2	43.6	23.5	23.5
11PM-MID	272	0.0	78	0.0	1500	272	0	78	0.45	0	65.9	52.8	44.4	24.2	24.2

----- SITE BREAKDOWN DELAYS -----

BREAKDOWN DURATION (MINS)	0
RANGE OF QUEUE DELAY - MIN	0.0
(VEH-H) MAX	0.0
RANGE OF DIVN DELAY - MIN	0.0
(VEH-H) MAX	0.0
AV BREAKDOWNS PER DAY	0.00
AV QUEUE DELAY/DAY (VEH-H)	0.0
AV DIVN DELAY/DAY (VEH-H)	0.0
AV TOTAL DELAY/DAY (VEH-H)	0.0

----- SITE ACCIDENT DELAYS -----

ACCIDENT DURATION (MINS)	0
RANGE OF QUEUE DELAY - MIN	0.0
(VEH-H) MAX	0.0
RANGE OF DIVN DELAY - MIN	0.0
(VEH-H) MAX	0.0
AV ACCIDENTS PER DAY	0.00
AV QUEUE DELAY/DAY (VEH-H)	0.0
AV DIVN DELAY/DAY (VEH-H)	0.0
AV TOTAL DELAY/DAY (VEH-H)	0.0

AVERAGE ACCIDENT NUMBERS (PIA/DAY)

MAIN ROUTE WITHOUT WORKS	0.0076
MAIN ROUTE WITH WORKS	0.0053
DIVERSION	0.0751

PIA: Personal Injury Accidents

IMPACTS ON ROAD USERS

ROAD USER COSTS PER DAY (DOLLARS)	\$101,045
CONGESTED HOURS PER DAY*	7

*Delays Exceeding 15 Minutes

STH 441: CTH 00 TO CTH CE (OUTAGAMIE COUNTY)
CONTINUOUS (24 HOUR) CLOSURE
DIVERSION ROUTE: CTH CE - CTH N - CTH 00

MAY
 Analyzed for 2009
 Construction Season

GRAPHICAL REPRESENTATION OF TRAFFIC MODEL INPUT AND OUTPUT
SUNDAY NORTHBOUND DIRECTION

