

**STH 441: CTH 00 TO CTH CE (OUTAGAMIE COUNTY)
CONTINUOUS (24 HOUR) CLOSURE
DIVERSION ROUTE: CTH CE - CTH N - CTH 00**

MAY
Analyzed for 2009
Construction Season

SUMMARY OF TRAFFIC MODEL OUTPUT

MON-THUR SOUTHBOUND DIRECTION

TIME OF DAY	FLOWS AND CAPACITY IN VEH/HR							AVERAGE SPEEDS IN MPH							
	MAIN ROUTE		ALTERNATE ROUTE		SITE CAPA CITY	FLOW MAIN ROUTE	FLOW DIVER -TING	TOTAL DIVN FLOW	AV.DEL PER VEH (MINS)	AVERAGE QUEUE (VEH)	MAIN ROUTE		ALTERNATE ROUTE		
	DEMAND FLOW	PCT HEAVY	NORMAL FLOW	PCT HEAVY							WITHOUT WORK ZN	WITH WORK ZN	SITE	WITHOUT WORK ZN	WITH WORK ZN
MID-1 AM	122	0.0	38	0.0	1500	122	0	38	0.43	0	66.1	53.3	45.0	24.5	24.5
1-2 AM	102	0.0	25	0.0	1500	102	0	25	0.43	0	66.2	53.5	45.1	24.7	24.7
2-3 AM	89	0.0	25	0.0	1500	89	0	25	0.43	0	66.2	53.5	45.1	24.7	24.7
3-4 AM	108	0.0	41	0.0	1500	108	0	41	0.43	0	66.2	53.4	45.1	24.5	24.5
4-5 AM	212	0.0	111	0.0	1500	212	0	111	0.44	0	66.0	53.0	44.6	24.0	24.0
5-6 AM	533	0.0	344	0.0	1500	533	0	344	0.47	0	65.4	52.0	43.4	22.2	22.2
6-7 AM	1042	0.0	671	0.0	1500	1042	0	671	0.52	0	64.5	50.3	41.5	19.7	19.7
7-8 AM	1189	0.0	941	0.0	1500	1189	0	941	0.62	0	64.1	48.1	38.8	17.6	17.6
8-9 AM	1156	0.0	571	0.0	1500	1156	0	571	0.58	0	64.2	49.0	39.9	20.4	20.4
9-10 AM	1101	0.0	425	0.0	1500	1101	0	425	0.53	0	64.3	50.1	41.4	21.5	21.5
10-11 AM	1050	0.0	423	0.0	1500	1050	0	423	0.52	0	64.5	50.3	41.5	21.6	21.6
11A-NOON	1023	0.0	446	0.0	1500	1023	0	446	0.52	0	64.5	50.4	41.6	21.4	21.4
NOON-1PM	1022	0.0	485	0.0	1500	1022	0	485	0.52	0	64.5	50.4	41.6	21.1	21.1
1-2 PM	1024	0.0	510	0.0	1500	1024	0	510	0.52	0	64.5	50.4	41.6	20.9	20.9
2-3 PM	1123	0.0	548	0.0	1500	1123	0	548	0.54	0	64.3	49.9	41.1	20.6	20.6
3-4 PM	1311	0.0	619	0.0	1500	1311	0	619	0.78	0	64.0	45.1	35.2	20.1	20.1
4-5 PM	1411	0.0	701	0.0	1500	1411	0	701	0.91	0	63.8	43.0	32.7	19.4	19.4
5-6 PM	1205	0.0	655	0.0	1500	1205	0	655	0.64	0	64.1	47.7	38.3	19.8	19.8
6-7 PM	817	0.0	451	0.0	1500	817	0	451	0.50	0	64.8	51.0	42.4	21.4	21.4
7-8 PM	588	0.0	306	0.0	1500	588	0	306	0.48	0	65.3	51.8	43.2	22.5	22.5
8-9 PM	504	0.0	252	0.0	1500	504	0	252	0.47	0	65.5	52.0	43.5	22.9	22.9
9-10 PM	445	0.0	214	0.0	1500	445	0	214	0.47	0	65.6	52.3	43.7	23.2	23.2
10-11 PM	356	0.0	141	0.0	1500	356	0	141	0.46	0	65.7	52.5	44.1	23.8	23.8
11PM-MID	179	0.0	82	0.0	1500	179	0	82	0.44	0	66.1	53.2	44.8	24.2	24.2

----- SITE BREAKDOWN DELAYS -----	
BREAKDOWN DURATION (MINS)	0
RANGE OF QUEUE DELAY - MIN	0.0
(VEH-H) MAX	0.0
RANGE OF DIVN DELAY - MIN	0.0
(VEH-H) MAX	0.0
AV BREAKDOWNS PER DAY	0.00
AV QUEUE DELAY/DAY (VEH-H)	0.0
AV DIVN DELAY/DAY (VEH-H)	0.0
AV TOTAL DELAY/DAY (VEH-H)	0.0

----- SITE ACCIDENT DELAYS -----	
ACCIDENT DURATION (MINS)	0
RANGE OF QUEUE DELAY - MIN	0.0
(VEH-H) MAX	0.0
RANGE OF DIVN DELAY - MIN	0.0
(VEH-H) MAX	0.0
AV ACCIDENTS PER DAY	0.00
AV QUEUE DELAY/DAY (VEH-H)	0.0
AV DIVN DELAY/DAY (VEH-H)	0.0
AV TOTAL DELAY/DAY (VEH-H)	0.0

AVERAGE ACCIDENT NUMBERS (PIA/DAY)	
MAIN ROUTE WITHOUT WORKS	0.0056
MAIN ROUTE WITH WORKS	0.0045
DIVERSION	0.0668

PIA: Personal Injury Accidents

IMPACTS ON ROAD USERS	
ROAD USER COSTS PER DAY (DOLLARS)	\$2,085
CONGESTED HOURS PER DAY*	0

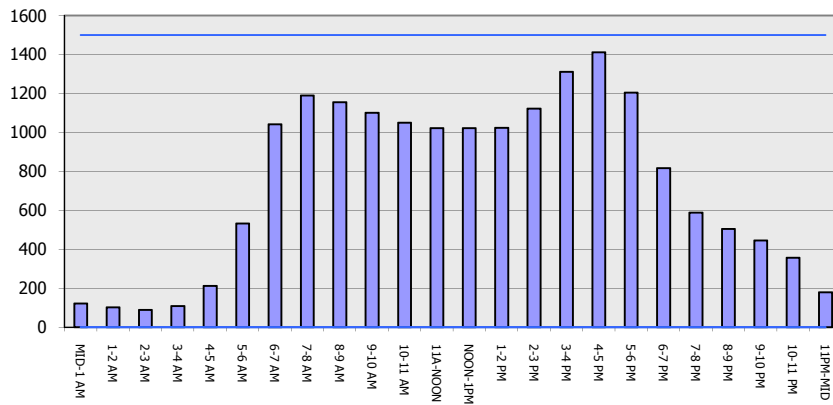
*Delays Exceeding 15 Minutes

STH 441: CTH 00 TO CTH CE (OUTAGAMIE COUNTY)
CONTINUOUS (24 HOUR) CLOSURE
DIVERSION ROUTE: CTH CE - CTH N - CTH 00

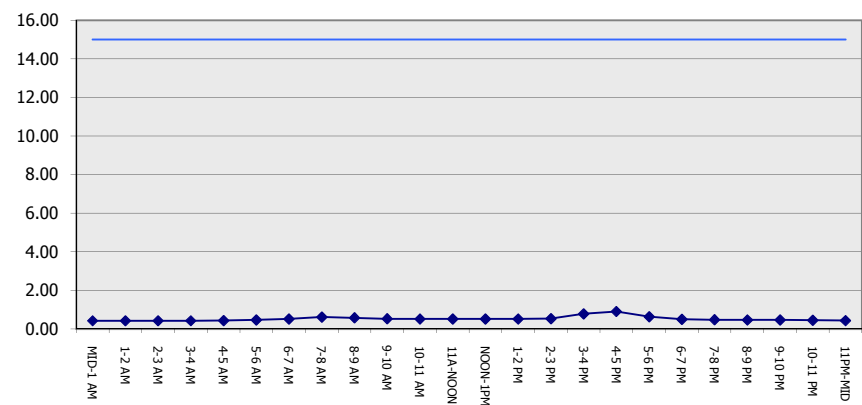
MAY
 Analyzed for 2009
 Construction Season

GRAPHICAL REPRESENTATION OF TRAFFIC MODEL INPUT AND OUTPUT
MON-THUR SOUTHBOUND DIRECTION

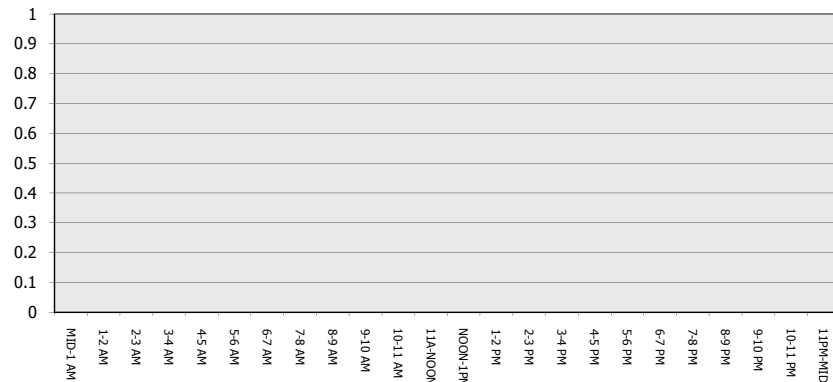
Main Route - Traffic Demand (Vehicles Per Hour)



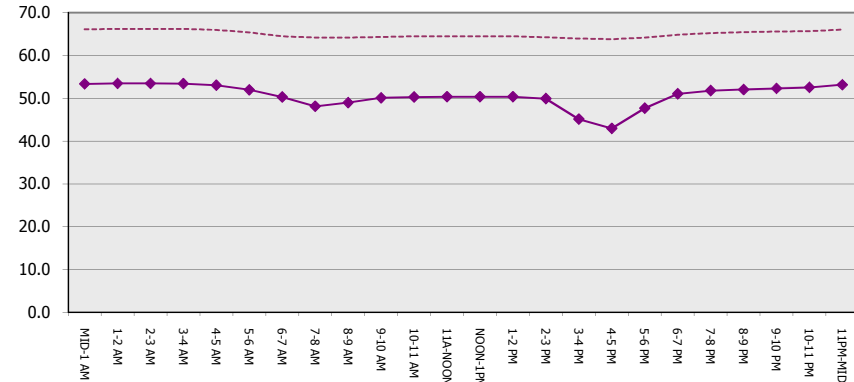
Main Route Average Delay Per Vehicle (Minutes)



Main Route - Average Queue Length (Vehicles)



Main Route - Average Speed (MPH)



STH 441: CTH 00 TO CTH CE (OUTAGAMIE COUNTY) CONTINUOUS (24 HOUR) CLOSURE DIVERSION ROUTE: CTH CE - CTH N - CTH 00	MAY
	Analyzed for 2009 Construction Season

SUMMARY OF TRAFFIC MODEL OUTPUT

MON-THUR NORTHBOUND DIRECTION

TIME OF DAY	FLOWS AND CAPACITY IN VEH/HR								AVERAGE SPEEDS IN MPH						
	MAIN		DIVERSION		SITE CAPA CITY	FLOW MAIN ROUTE	FLOW DIVER -TING	TOTAL DIVN FLOW	AV.DEL PER VEH (MINS)	AVERAGE QUEUE (VEH)	MAIN ROUTE		SITE	ALTERNATE ROUTE	
	DEMAND FLOW	PCT HEAVY	NORMAL FLOW	PCT HEAVY							WITHOUT WORK ZN	WITH WORK ZN		WITHOUT WORK ZN	WITH WORK ZN
MID-1 AM	121	0.0	71	0.0	1500	121	0	71	0.43	0	66.1	53.4	45.0	24.3	24.3
1-2 AM	92	0.0	45	0.0	1500	92	0	45	0.43	0	66.2	53.5	45.1	24.5	24.5
2-3 AM	97	0.0	36	0.0	1500	97	0	36	0.43	0	66.2	53.5	45.1	24.6	24.6
3-4 AM	152	0.0	26	0.0	1500	152	0	26	0.44	0	66.1	53.3	44.9	24.7	24.7
4-5 AM	312	0.0	52	0.0	1500	312	0	52	0.45	0	65.8	52.7	44.2	24.5	24.5
5-6 AM	672	0.0	191	0.0	1500	672	0	191	0.49	0	65.1	51.5	42.8	23.3	23.3
6-7 AM	1024	0.0	531	0.0	1500	1024	0	531	0.52	0	64.5	50.4	41.6	20.7	20.7
7-8 AM	1109	0.0	813	0.0	1500	1109	0	813	0.53	0	64.3	50.1	41.3	18.6	18.6
8-9 AM	995	0.0	583	0.0	1500	995	0	583	0.52	0	64.5	50.5	41.7	20.4	20.4
9-10 AM	947	0.0	464	0.0	1500	947	0	464	0.51	0	64.6	50.6	41.9	21.3	21.3
10-11 AM	964	0.0	473	0.0	1500	964	0	473	0.52	0	64.6	50.5	41.8	21.2	21.2
11A-NOON	986	0.0	529	0.0	1500	986	0	529	0.52	0	64.5	50.5	41.7	20.8	20.8
NOON-1PM	1041	0.0	560	0.0	1500	1041	0	560	0.52	0	64.5	50.3	41.5	20.6	20.6
1-2 PM	1152	0.0	582	0.0	1500	1152	0	582	0.57	0	64.2	49.1	40.1	20.4	20.4
2-3 PM	1248	0.0	796	0.0	1500	1248	0	796	0.70	0	64.1	46.6	36.9	18.8	18.8
3-4 PM	1408	0.0	958	0.0	1499	1408	0	958	0.91	0	63.8	43.0	32.8	17.5	17.5
4-5 PM	1515	0.0	1152	0.0	1499	1515	0	1152	1.42	10	63.6	36.3	30.8	16.0	16.0
5-6 PM	1306	0.0	1010	0.0	1500	1306	0	1010	0.80	1	64.0	44.8	35.4	17.1	17.1
6-7 PM	898	0.0	643	0.0	1500	898	0	643	0.51	0	64.7	50.8	42.0	19.9	19.9
7-8 PM	674	0.0	441	0.0	1500	674	0	441	0.49	0	65.1	51.5	42.8	21.5	21.5
8-9 PM	569	0.0	375	0.0	1500	569	0	375	0.48	0	65.3	51.9	43.2	22.0	22.0
9-10 PM	438	0.0	303	0.0	1500	438	0	303	0.46	0	65.6	52.3	43.7	22.5	22.5
10-11 PM	305	0.0	246	0.0	1500	305	0	246	0.45	0	65.8	52.7	44.3	23.0	23.0
11PM-MID	164	0.0	144	0.0	1500	164	0	144	0.44	0	66.1	53.2	44.8	23.7	23.7

----- SITE BREAKDOWN DELAYS -----	
BREAKDOWN DURATION (MINS)	0
RANGE OF QUEUE DELAY - MIN	0.0
(VEH-H) MAX	0.0
RANGE OF DIVN DELAY - MIN	0.0
(VEH-H) MAX	0.0
AV BREAKDOWNS PER DAY	0.00
AV QUEUE DELAY/DAY (VEH-H)	0.0
AV DIVN DELAY/DAY (VEH-H)	0.0
AV TOTAL DELAY/DAY (VEH-H)	0.0

----- SITE ACCIDENT DELAYS -----	
ACCIDENT DURATION (MINS)	0
RANGE OF QUEUE DELAY - MIN	0.0
(VEH-H) MAX	0.0
RANGE OF DIVN DELAY - MIN	0.0
(VEH-H) MAX	0.0
AV ACCIDENTS PER DAY	0.00
AV QUEUE DELAY/DAY (VEH-H)	0.0
AV DIVN DELAY/DAY (VEH-H)	0.0
AV TOTAL DELAY/DAY (VEH-H)	0.0

AVERAGE ACCIDENT NUMBERS (PIA/DAY)	
MAIN ROUTE WITHOUT WORKS	0.0058
MAIN ROUTE WITH WORKS	0.0046
DIVERSION	0.0816

PIA: Personal Injury Accidents

IMPACTS ON ROAD USERS	
ROAD USER COSTS PER DAY (DOLLARS)	\$2,403
CONGESTED HOURS PER DAY*	0

*Delays Exceeding 15 Minutes

STH 441: CTH 00 TO CTH CE (OUTAGAMIE COUNTY)
CONTINUOUS (24 HOUR) CLOSURE
DIVERSION ROUTE: CTH CE - CTH N - CTH 00

MAY
 Analyzed for 2009
 Construction Season

GRAPHICAL REPRESENTATION OF TRAFFIC MODEL INPUT AND OUTPUT
MON-THUR NORTHBOUND DIRECTION

