

STH 441: CTH 00 TO CTH CE (OUTAGAMIE COUNTY) CONTINUOUS (24 HOUR) CLOSURE DIVERSION ROUTE: CTH CE - CTH N - CTH 00	MAY
	Analyzed for 2009 Construction Season

SUMMARY OF TRAFFIC MODEL OUTPUT

FRIDAY SOUTHBOUND DIRECTION

TIME OF DAY	FLOWS AND CAPACITY IN VEH/HR							AVERAGE SPEEDS IN MPH							
	MAIN ROUTE		ALTERNATE ROUTE		SITE CAPA CITY	FLOW MAIN ROUTE	FLOW DIVER -TING	TOTAL DIVN FLOW	AV.DEL PER VEH (MINS)	AVERAGE QUEUE (VEH)	MAIN ROUTE		ALTERNATE ROUTE		
	DEMAND FLOW	PCT HEAVY	NORMAL FLOW	PCT HEAVY							WITHOUT WORK ZN	WITH WORK ZN	SITE	WITHOUT WORK ZN	WITH WORK ZN
MID-1 AM	208	0.0	49	0.0	1500	208	0	49	0.44	0	66.0	53.1	44.6	24.5	24.5
1-2 AM	149	0.0	41	0.0	1500	149	0	41	0.44	0	66.1	53.3	44.9	24.5	24.5
2-3 AM	110	0.0	36	0.0	1500	110	0	36	0.43	0	66.2	53.4	45.0	24.6	24.6
3-4 AM	120	0.0	43	0.0	1500	120	0	43	0.43	0	66.1	53.4	45.0	24.5	24.5
4-5 AM	182	0.0	118	0.0	1500	182	0	118	0.44	0	66.1	53.2	44.8	23.9	23.9
5-6 AM	435	0.0	305	0.0	1500	435	0	305	0.46	0	65.6	52.3	43.8	22.5	22.5
6-7 AM	956	0.0	620	0.0	1500	956	0	620	0.51	0	64.6	50.5	41.9	20.1	20.1
7-8 AM	1257	0.0	904	0.0	1500	1257	0	904	0.71	0	64.0	46.5	36.7	17.9	17.9
8-9 AM	1316	0.0	567	0.0	1500	1316	0	567	0.79	0	64.0	45.0	35.1	20.5	20.5
9-10 AM	1406	0.0	435	0.0	1500	1406	0	435	0.90	0	63.8	43.1	32.9	21.5	21.5
10-11 AM	1472	0.0	464	0.0	1500	1472	0	464	0.99	0	63.7	41.7	31.4	21.3	21.3
11A-NOON	1470	0.0	495	0.0	1499	1470	0	495	0.99	0	63.7	41.8	31.4	21.1	21.1
NOON-1PM	1583	0.0	519	0.0	1499	1583	0	519	2.07	32	63.5	30.3	30.8	20.9	20.9
1-2 PM	1772	0.0	557	0.0	1500	1772	0	557	8.31	211	63.1	12.7	30.8	20.6	20.9
2-3 PM	1839	0.0	564	0.0	1499	1653	185	750	17.98	459	63.0	8.5	30.8	20.5	20.6
3-4 PM	1955	0.0	673	0.0	1500	1571	383	1056	21.17	544	62.7	7.9	30.8	19.7	18.6
4-5 PM	2249	0.0	710	0.0	1500	1611	638	1348	24.81	644	62.2	7.5	30.8	19.4	16.6
5-6 PM	2300	0.0	653	0.0	1499	1484	816	1469	26.66	693	62.1	7.3	30.8	19.8	15.8
6-7 PM	2016	0.0	475	0.0	1499	1319	697	1172	22.58	584	62.7	7.8	30.8	21.2	17.8
7-8 PM	1264	0.0	315	0.0	1499	1178	86	401	13.15	339	64.0	9.9	31.5	22.4	22.7
8-9 PM	864	0.0	275	0.0	1500	864	0	275	0.96	25	64.8	42.6	42.0	22.7	22.7
9-10 PM	728	0.0	237	0.0	1500	728	0	237	0.49	0	65.0	51.3	42.7	23.0	23.0
10-11 PM	731	0.0	212	0.0	1500	731	0	212	0.49	0	65.0	51.3	42.7	23.2	23.2
11PM-MID	522	0.0	132	0.0	1500	522	0	132	0.47	0	65.4	52.0	43.4	23.8	23.8

----- SITE BREAKDOWN DELAYS -----	
BREAKDOWN DURATION (MINS)	0
RANGE OF QUEUE DELAY - MIN	0.0
(VEH-H) MAX	0.0
RANGE OF DIVN DELAY - MIN	0.0
(VEH-H) MAX	0.0
AV BREAKDOWNS PER DAY	0.00
AV QUEUE DELAY/DAY (VEH-H)	0.0
AV DIVN DELAY/DAY (VEH-H)	0.0
AV TOTAL DELAY/DAY (VEH-H)	0.0

----- SITE ACCIDENT DELAYS -----	
ACCIDENT DURATION (MINS)	0
RANGE OF QUEUE DELAY - MIN	0.0
(VEH-H) MAX	0.0
RANGE OF DIVN DELAY - MIN	0.0
(VEH-H) MAX	0.0
AV ACCIDENTS PER DAY	0.00
AV QUEUE DELAY/DAY (VEH-H)	0.0
AV DIVN DELAY/DAY (VEH-H)	0.0
AV TOTAL DELAY/DAY (VEH-H)	0.0

AVERAGE ACCIDENT NUMBERS (PIA/DAY)	
MAIN ROUTE WITHOUT WORKS	0.0086
MAIN ROUTE WITH WORKS	0.0061
DIVERSION	0.0903

PIA: Personal Injury Accidents

IMPACTS ON ROAD USERS	
ROAD USER COSTS PER DAY (DOLLARS)	\$70,716
CONGESTED HOURS PER DAY*	5

*Delays Exceeding 15 Minutes

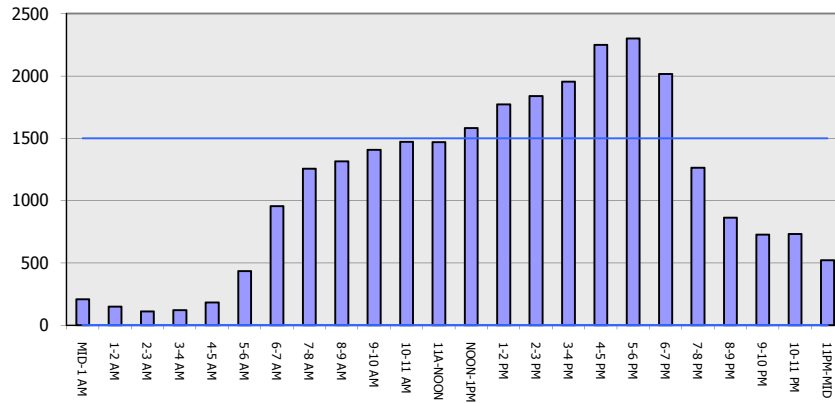
**STH 441: CTH 00 TO CTH CE (OUTAGAMIE COUNTY)
 CONTINUOUS (24 HOUR) CLOSURE
 DIVERSION ROUTE: CTH CE - CTH N - CTH 00**

MAY
 Analyzed for 2009
 Construction Season

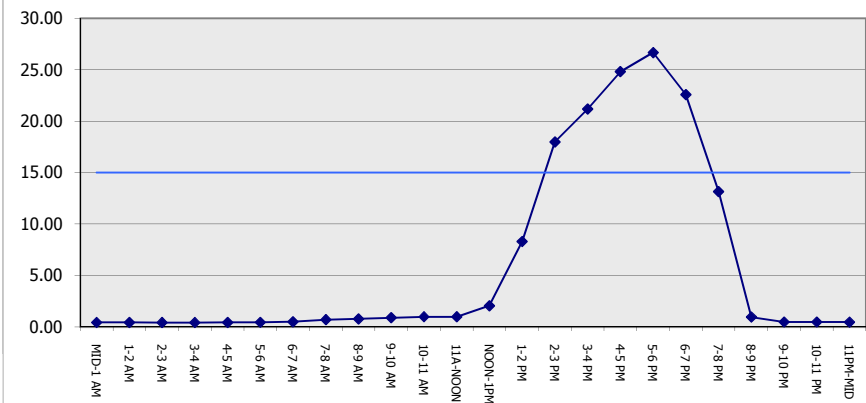
GRAPHICAL REPRESENTATION OF TRAFFIC MODEL INPUT AND OUTPUT

FRIDAY SOUTHBOUND DIRECTION

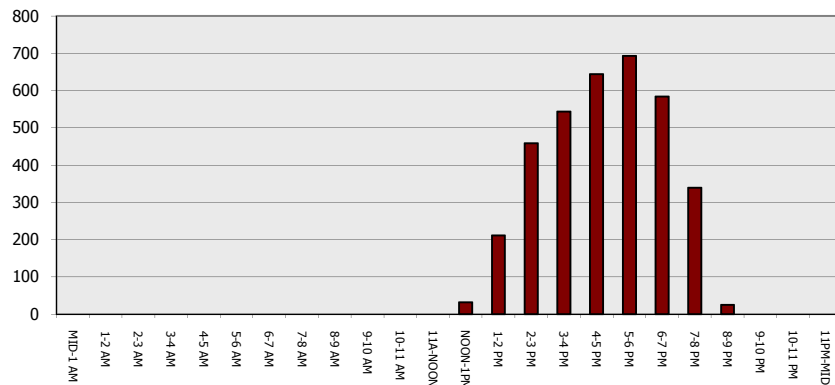
Main Route - Traffic Demand (Vehicles Per Hour)



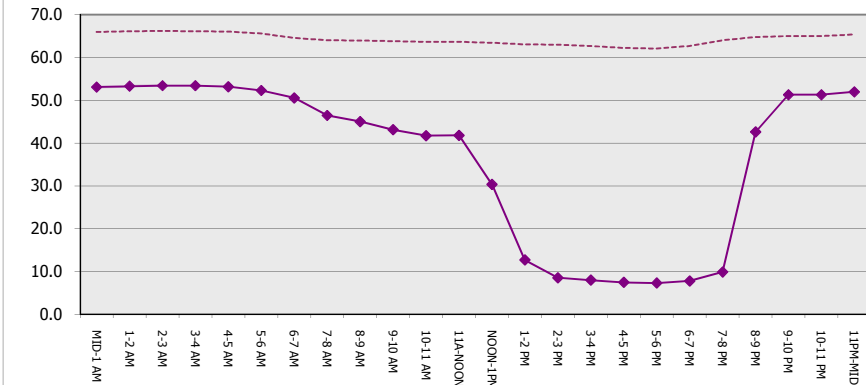
Main Route Average Delay Per Vehicle (Minutes)



Main Route - Average Queue Length (Vehicles)



Main Route - Average Speed (MPH)



**STH 441: CTH 00 TO CTH CE (OUTAGAMIE COUNTY)
CONTINUOUS (24 HOUR) CLOSURE
DIVERSION ROUTE: CTH CE - CTH N - CTH 00**

MAY
Analyzed for 2009
Construction Season

SUMMARY OF TRAFFIC MODEL OUTPUT

FRIDAY NORTHBOUND DIRECTION

TIME OF DAY	FLOWS AND CAPACITY IN VEH/HR								AVERAGE SPEEDS IN MPH						
	MAIN		DIVERSION		SITE CAPA CITY	FLOW MAIN ROUTE	FLOW DIVER -TING	TOTAL DIVN FLOW	AV.DEL PER VEH (MINS)	AVERAGE QUEUE (VEH)	MAIN ROUTE		SITE	ALTERNATE ROUTE	
	DEMAND FLOW	PCT HEAVY	NORMAL FLOW	PCT HEAVY							WITHOUT WORK ZN	WITH WORK ZN		WITHOUT WORK ZN	WITH WORK ZN
MID-1 AM	143	0.0	82	0.0	1500	143	0	82	0.44	0	66.1	53.3	44.9	24.2	24.2
1-2 AM	97	0.0	50	0.0	1500	97	0	50	0.43	0	66.2	53.5	45.1	24.5	24.5
2-3 AM	100	0.0	43	0.0	1500	100	0	43	0.43	0	66.2	53.5	45.1	24.5	24.5
3-4 AM	134	0.0	35	0.0	1500	134	0	35	0.44	0	66.1	53.3	45.0	24.6	24.6
4-5 AM	241	0.0	47	0.0	1500	241	0	47	0.45	0	66.0	53.0	44.5	24.5	24.5
5-6 AM	518	0.0	182	0.0	1500	518	0	182	0.47	0	65.4	52.0	43.4	23.4	23.4
6-7 AM	884	0.0	505	0.0	1500	884	0	505	0.51	0	64.7	50.8	42.1	21.0	21.0
7-8 AM	1057	0.0	740	0.0	1500	1057	0	740	0.52	0	64.4	50.2	41.5	19.2	19.2
8-9 AM	950	0.0	538	0.0	1500	950	0	538	0.51	0	64.6	50.6	41.9	20.7	20.7
9-10 AM	880	0.0	453	0.0	1500	880	0	453	0.51	0	64.8	50.8	42.1	21.4	21.4
10-11 AM	903	0.0	510	0.0	1500	903	0	510	0.51	0	64.7	50.7	42.0	20.9	20.9
11A-NOON	1045	0.0	571	0.0	1500	1045	0	571	0.52	0	64.5	50.3	41.5	20.4	20.4
NOON-1PM	1113	0.0	596	0.0	1500	1113	0	596	0.53	0	64.3	50.1	41.3	20.2	20.2
1-2 PM	1342	0.0	646	0.0	1499	1342	0	646	0.82	0	63.9	44.5	34.5	19.9	19.9
2-3 PM	1625	0.0	856	0.0	1499	1625	0	856	2.46	46	63.3	27.6	30.8	18.3	18.3
3-4 PM	1845	0.0	996	0.0	1500	1845	0	996	11.01	286	63.0	10.9	30.8	17.2	17.9
4-5 PM	1990	0.0	1137	0.0	1499	1765	226	1363	24.79	645	62.7	7.5	30.8	16.1	16.6
5-6 PM	1825	0.0	980	0.0	1499	1365	460	1440	26.20	680	63.0	7.3	30.8	17.3	16.0
6-7 PM	1359	0.0	653	0.0	1500	1237	122	775	17.88	458	63.8	8.5	30.8	19.8	20.4
7-8 PM	978	0.0	455	0.0	1499	978	0	455	2.65	121	64.6	27.4	38.4	21.4	21.5
8-9 PM	840	0.0	407	0.0	1500	840	0	407	0.50	0	64.8	50.9	42.2	21.7	21.7
9-10 PM	716	0.0	348	0.0	1500	716	0	348	0.49	0	65.1	51.4	42.7	22.2	22.2
10-11 PM	567	0.0	321	0.0	1500	567	0	321	0.48	0	65.3	51.9	43.2	22.4	22.4
11PM-MID	385	0.0	195	0.0	1500	385	0	195	0.46	0	65.6	52.5	44.0	23.3	23.3

----- SITE BREAKDOWN DELAYS -----

BREAKDOWN DURATION (MINS)	0
RANGE OF QUEUE DELAY - MIN	0.0
(VEH-H) MAX	0.0
RANGE OF DIVN DELAY - MIN	0.0
(VEH-H) MAX	0.0
AV BREAKDOWNS PER DAY	0.00
AV QUEUE DELAY/DAY (VEH-H)	0.0
AV DIVN DELAY/DAY (VEH-H)	0.0
AV TOTAL DELAY/DAY (VEH-H)	0.0

----- SITE ACCIDENT DELAYS -----

ACCIDENT DURATION (MINS)	0
RANGE OF QUEUE DELAY - MIN	0.0
(VEH-H) MAX	0.0
RANGE OF DIVN DELAY - MIN	0.0
(VEH-H) MAX	0.0
AV ACCIDENTS PER DAY	0.00
AV QUEUE DELAY/DAY (VEH-H)	0.0
AV DIVN DELAY/DAY (VEH-H)	0.0
AV TOTAL DELAY/DAY (VEH-H)	0.0

AVERAGE ACCIDENT NUMBERS (PIA/DAY)

MAIN ROUTE WITHOUT WORKS	0.0069
MAIN ROUTE WITH WORKS	0.0052
DIVERSION	0.0900

PIA: Personal Injury Accidents

IMPACTS ON ROAD USERS

ROAD USER COSTS PER DAY (DOLLARS)	\$38,996
CONGESTED HOURS PER DAY*	3

*Delays Exceeding 15 Minutes

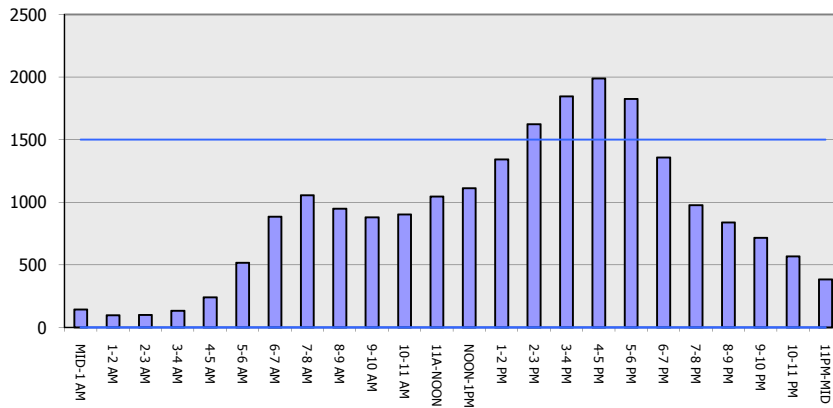
STH 441: CTH 00 TO CTH CE (OUTAGAMIE COUNTY)
CONTINUOUS (24 HOUR) CLOSURE
DIVERSION ROUTE: CTH CE - CTH N - CTH 00

MAY
 Analyzed for 2009
 Construction Season

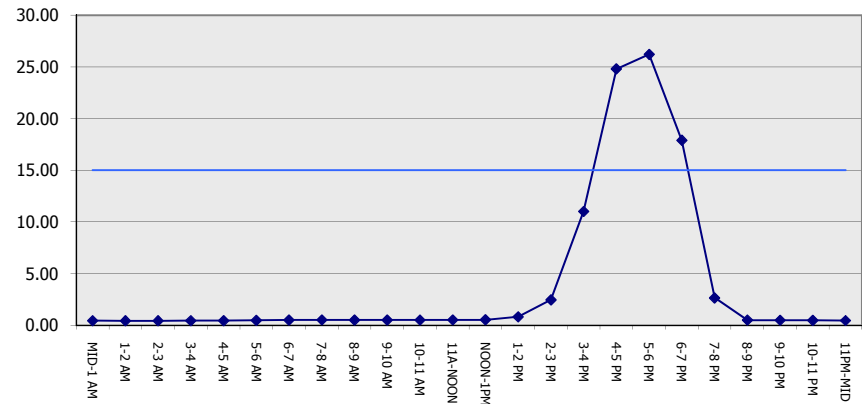
GRAPHICAL REPRESENTATION OF TRAFFIC MODEL INPUT AND OUTPUT

FRIDAY NORTHBOUND DIRECTION

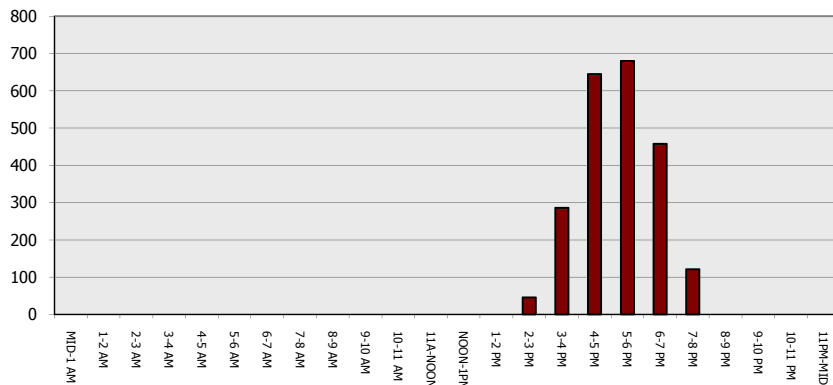
Main Route - Traffic Demand (Vehicles Per Hour)



Main Route Average Delay Per Vehicle (Minutes)



Main Route - Average Queue Length (Vehicles)



Main Route - Average Speed (MPH)

