

USH 41: STH 15 TO STH 441 (OUTAGAMIE COUNTY) CONTINUOUS (24 HOUR) CLOSURE NO DIVERSION ROUTE (MAX QUEUE METHOD)	OCTOBER
	Analyzed for 2009 Construction Season

SUMMARY OF TRAFFIC MODEL OUTPUT

SUNDAY SOUTHBOUND DIRECTION

TIME OF DAY	FLOWS AND CAPACITY IN VEH/HR						AVERAGE SPEEDS IN MPH				
	MAIN ROUTE		SITE CAPA CITY	FLOW		AV.DEL PER VEH (MINS)	AVERAGE QUEUE (VEH)	MAIN ROUTE		SITE	
	DEMAND FLOW	PCT HEAVY		MAIN ROUTE	'DIVER TED'			WITHOUT WORK ZONE	WITH WORK ZONE		
MID-1 AM	398	0.0	1499	398	0	2.54	104	65.6	44.6	43.3	
1-2 AM	191	0.0	1500	191	0	0.44	0	66.0	61.0	44.7	
2-3 AM	181	0.0	1500	181	0	0.44	0	66.1	61.0	44.8	
3-4 AM	109	0.0	1500	109	0	0.43	0	66.2	61.2	45.0	
4-5 AM	119	0.0	1500	119	0	0.43	0	66.1	61.2	45.0	
5-6 AM	216	0.0	1500	216	0	0.44	0	66.0	60.9	44.6	
6-7 AM	266	0.0	1500	266	0	0.45	0	65.9	60.8	44.4	
7-8 AM	358	0.0	1500	358	0	0.46	0	65.7	60.5	44.0	
8-9 AM	764	0.0	1500	764	0	0.50	0	65.0	59.6	42.5	
9-10 AM	1099	0.0	1499	1099	0	0.58	0	64.3	58.2	40.1	
10-11 AM	1584	0.0	1499	1584	0	1.76	22	63.4	48.2	30.8	
11AM-NOON	1732	0.0	1500	1732	0	7.68	190	63.2	26.6	30.8	
NOON-1PM	1897	0.0	1499	1587	310	15.43+	390	62.8	16.8	30.8	
1-2 PM	1915	0.0	1500	1500	415	15.78+	400	62.8	16.5	30.8	
2-3 PM	1859	0.0	1500	1500	359	15.79+	400	62.9	16.5	30.8	
3-4 PM	1895	0.0	1500	1500	395	15.79+	400	62.8	16.5	30.8	
4-5 PM	1886	0.0	1500	1500	386	15.79+	400	62.8	16.5	30.8	
5-6 PM	1556	0.0	1500	1487	70	15.79+	398	63.5	16.6	30.8	
6-7 PM	1264	0.0	1499	1264	0	11.58	295	64.0	20.7	31.3	
7-8 PM	840	0.0	1500	840	0	1.04	20	64.8	54.4	42.2	
8-9 PM	594	0.0	1500	594	0	0.48	0	65.3	60.0	43.2	
9-10 PM	555	0.0	1500	555	0	0.48	0	65.3	60.1	43.3	
10-11 PM	602	0.0	1500	602	0	0.48	0	65.3	59.9	43.1	
11PM-MID	2310	0.0	1499	1918	392	11.50+	304	62.1	20.6	30.8	

+ INDICATES QUEUEING EXCEEDS USER-SPECIFIED MAXIMUM LIMIT

----- SITE BREAKDOWN DELAYS -----	
BREAKDOWN DURATION (MINS)	0
RANGE OF QUEUE DELAY - MIN (VEH-H) MAX	0.0
AV BREAKDOWNS PER DAY	0.00
AV QUEUE DELAY/DAY (VEH-H)	0.0
AV TOTAL DELAY/DAY (VEH-H)	0.0

----- SITE ACCIDENT DELAYS -----	
BREAKDOWN DURATION (MINS)	0
RANGE OF QUEUE DELAY - MIN (VEH-H) MAX	0
AV BREAKDOWNS PER DAY	0
AV QUEUE DELAY/DAY (VEH-H)	0
AV TOTAL DELAY/DAY (VEH-H)	0

AVERAGE ACCIDENT NUMBERS (PIA/DAY)	
MAIN ROUTE WITHOUT WORKS	0.0227
MAIN ROUTE WITH WORKS	0.0191
'DIVERSION'	0.0051
PIA: Personal Injury Accidents	
IMPACTS ON ROAD USERS	
ROAD USER COSTS PER DAY	\$65,607
CONGESTED HOURS PER DAY*	7

*Delays Exceeding User-Specified Maximum

**USH 41: STH 15 TO STH 441 (OUTAGAMIE COUNTY)
CONTINUOUS (24 HOUR) CLOSURE
NO DIVERSION ROUTE (MAX QUEUE METHOD)**

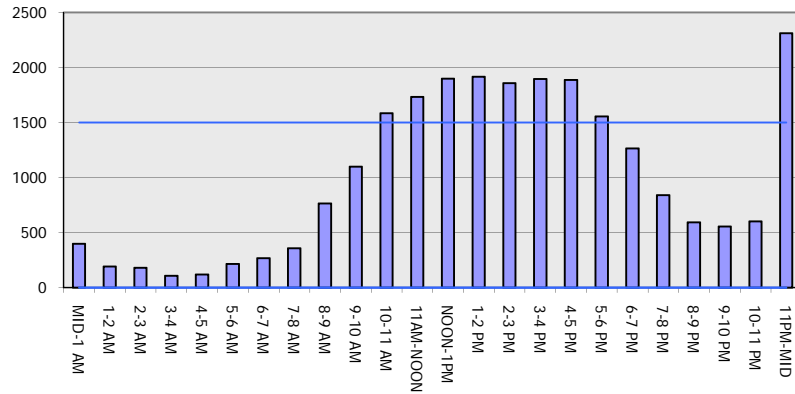
OCTOBER

Analyzed for 2009
Construction Season

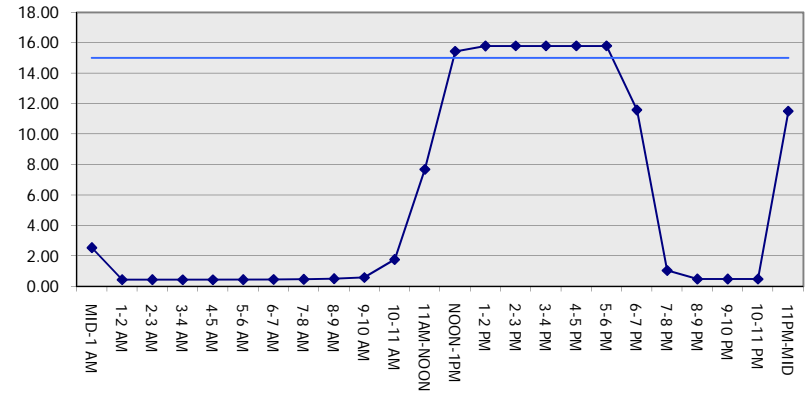
GRAPHICAL REPRESENTATION OF TRAFFIC MODEL INPUT AND OUTPUT

SUNDAY SOUTHBOUND DIRECTION

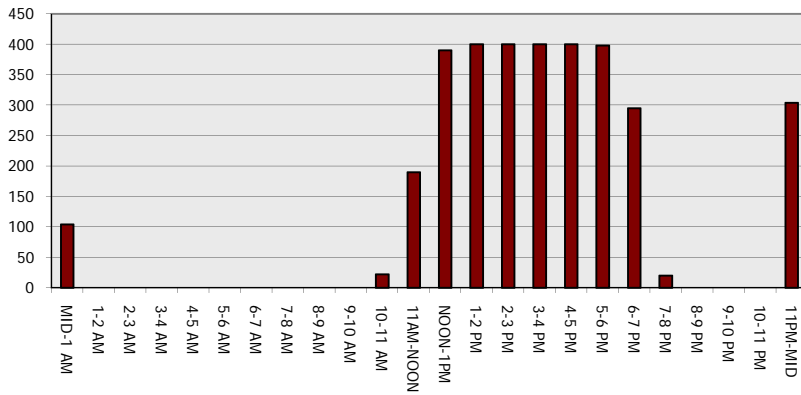
Main Route - Traffic Demand (Vehicles Per Hour)



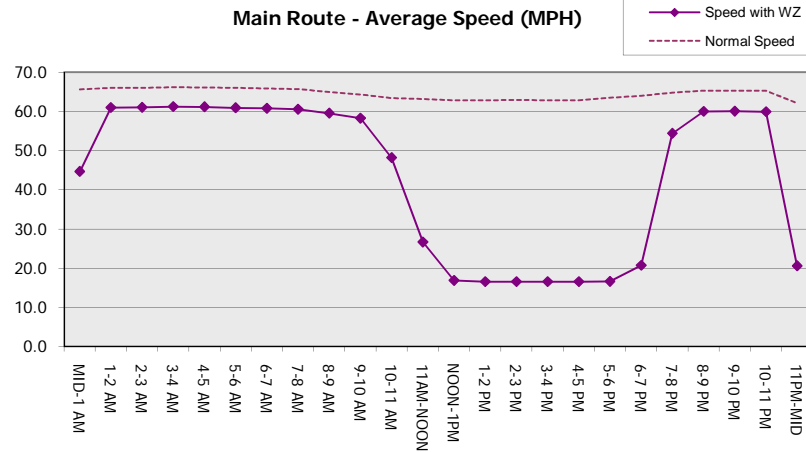
Main Route Average Delay Per Vehicle (Minutes)



Main Route - Average Queue Length (Vehicles)



Main Route - Average Speed (MPH)



USH 41: STH 15 TO STH 441 (OUTAGAMIE COUNTY) CONTINUOUS (24 HOUR) CLOSURE NO DIVERSION ROUTE (MAX QUEUE METHOD)	OCTOBER
	Analyzed for 2009 Construction Season

SUMMARY OF TRAFFIC MODEL OUTPUT

SUNDAY NORTHBOUND DIRECTION

TIME OF DAY	FLOWS AND CAPACITY IN VEH/HR							AVERAGE SPEEDS IN MPH		
	MAIN ROUTE		SITE CAPA CITY	FLOW		AV.DEL PER VEH (MINS)	AVERAGE QUEUE (VEH)	MAIN ROUTE		SITE
	DEMAND FLOW	PCT HEAVY		MAIN ROUTE	'DIVER TED'			WITHOUT WORK ZONE	WITH WORK ZONE	
MID-1 AM	343	0.0	1500	343	0	0.46	0	65.8	60.6	44.1
1-2 AM	184	0.0	1500	184	0	0.44	0	66.0	61.0	44.8
2-3 AM	221	0.0	1500	221	0	0.44	0	66.0	60.9	44.6
3-4 AM	91	0.0	1500	91	0	0.43	0	66.2	61.3	45.1
4-5 AM	103	0.0	1500	103	0	0.43	0	66.2	61.2	45.1
5-6 AM	197	0.0	1500	197	0	0.44	0	66.0	61.0	44.7
6-7 AM	251	0.0	1500	251	0	0.45	0	65.9	60.9	44.5
7-8 AM	353	0.0	1500	353	0	0.46	0	65.7	60.6	44.1
8-9 AM	666	0.0	1500	666	0	0.49	0	65.1	59.8	42.9
9-10 AM	913	0.0	1500	913	0	0.51	0	64.7	59.2	42.0
10-11 AM	1218	0.0	1499	1218	0	0.66	0	64.1	57.3	38.1
11AM-NOON	1625	0.0	1499	1625	0	2.43	42	63.3	44.2	30.8
NOON-1PM	1850	0.0	1500	1822	28	10.91+	285	63.0	21.4	30.8
1-2 PM	1957	0.0	1500	1483	474	15.71+	398	62.7	16.6	30.8
2-3 PM	2436	0.0	1500	1500	936	15.67+	400	61.5	16.5	30.8
3-4 PM	3029	0.0	1500	1500	1529	15.04+	400	55.5	16.5	30.8
4-5 PM	2568	0.0	1500	1500	1068	15.54+	400	60.2	16.5	30.8
5-6 PM	1834	0.0	1500	1478	356	15.71+	397	63.0	16.6	30.8
6-7 PM	1337	0.0	1499	1330	7	13.94+	352	63.9	18.2	30.8
7-8 PM	825	0.0	1500	825	0	1.69	49	64.8	49.6	41.9
8-9 PM	579	0.0	1500	579	0	0.48	0	65.3	60.0	43.2
9-10 PM	477	0.0	1500	477	0	0.47	0	65.5	60.3	43.6
10-11 PM	418	0.0	1500	418	0	0.46	0	65.6	60.4	43.8
11PM-MID	694	0.0	1500	694	0	0.49	0	65.1	59.7	42.8

+ INDICATES QUEUEING EXCEEDS USER-SPECIFIED MAXIMUM LIMIT

----- SITE BREAKDOWN DELAYS -----	
BREAKDOWN DURATION (MINS)	0
RANGE OF QUEUE DELAY - MIN (VEH-H) MAX	0.0
AV BREAKDOWNS PER DAY	0.00
AV QUEUE DELAY/DAY (VEH-H)	0.0
AV TOTAL DELAY/DAY (VEH-H)	0.0

----- SITE ACCIDENT DELAYS -----	
BREAKDOWN DURATION (MINS)	0
RANGE OF QUEUE DELAY - MIN (VEH-H) MAX	0
AV BREAKDOWNS PER DAY	0
AV QUEUE DELAY/DAY (VEH-H)	0
AV TOTAL DELAY/DAY (VEH-H)	0

AVERAGE ACCIDENT NUMBERS (PIA/DAY)	
MAIN ROUTE WITHOUT WORKS	0.0227
MAIN ROUTE WITH WORKS	0.0173
'DIVERSION'	0.0096

PIA: Personal Injury Accidents

ECONOMIC IMPACT ON ROAD USERS	
ROAD USER COSTS PER DAY	\$64,482
CONGESTED HOURS PER DAY*	7

*Delays Exceeding User-Specified Maximum

**USH 41: STH 15 TO STH 441 (OUTAGAMIE COUNTY)
CONTINUOUS (24 HOUR) CLOSURE
NO DIVERSION ROUTE (MAX QUEUE METHOD)**

OCTOBER

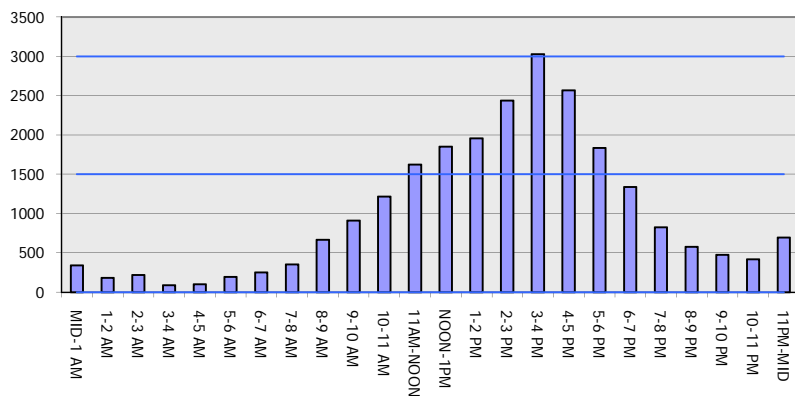
Analyzed for 2009
Construction Season

GRAPHICAL REPRESENTATION OF TRAFFIC MODEL INPUT AND OUTPUT

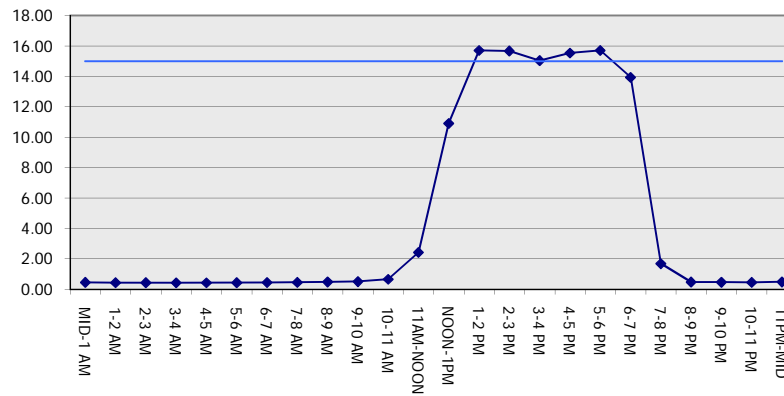
SUNDAY

NORTHBOUND DIRECTION

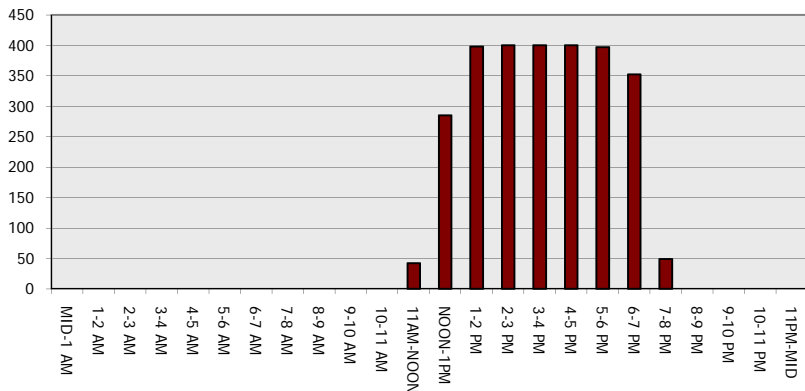
Main Route - Traffic Demand (Vehicles Per Hour)



Main Route Average Delay Per Vehicle (Minutes)



Main Route - Average Queue Length (Vehicles)



Main Route - Average Speed (MPH)

