

USH 41: STH 15 TO STH 441 (OUTAGAMIE COUNTY) CONTINUOUS (24 HOUR) CLOSURE NO DIVERSION ROUTE (MAX QUEUE METHOD)	OCTOBER
	Analyzed for 2009 Construction Season

SUMMARY OF TRAFFIC MODEL OUTPUT

SATURDAY SOUTHBOUND DIRECTION

TIME OF DAY	FLOWS AND CAPACITY IN VEH/HR						AVERAGE SPEEDS IN MPH				
	MAIN ROUTE		SITE CAPA CITY	FLOW		AV.DEL PER VEH (MINS)	AVERAGE QUEUE (VEH)	MAIN ROUTE		SITE	
	DEMAND FLOW	PCT HEAVY		MAIN ROUTE	'DIVER TED'			WITHOUT WORK ZONE	WITH WORK ZONE		
MID-1 AM	335	0.0	1500	335	0	0.45	0	65.8	60.6	44.2	
1-2 AM	201	0.0	1500	201	0	0.44	0	66.0	61.0	44.6	
2-3 AM	149	0.0	1500	149	0	0.44	0	66.1	61.1	44.9	
3-4 AM	136	0.0	1500	136	0	0.44	0	66.1	61.2	45.0	
4-5 AM	247	0.0	1500	247	0	0.45	0	66.0	60.9	44.5	
5-6 AM	360	0.0	1500	360	0	0.46	0	65.7	60.5	44.0	
6-7 AM	595	0.0	1500	595	0	0.48	0	65.3	60.0	43.2	
7-8 AM	945	0.0	1500	945	0	0.51	0	64.6	59.1	41.9	
8-9 AM	1399	0.0	1499	1399	0	0.89	0	63.8	55.0	33.1	
9-10 AM	1555	0.0	1499	1555	0	1.51	14	63.5	49.9	30.9	
10-11 AM	1894	0.0	1500	1894	0	9.09+	245	62.8	24.0	30.8	
11AM-NOON	1893	0.0	1499	1472	421	15.68+	397	62.8	16.6	30.8	
NOON-1PM	1936	0.0	1500	1500	436	15.78+	400	62.8	16.5	30.8	
1-2 PM	1843	0.0	1500	1500	343	15.80+	399	63.0	16.5	30.8	
2-3 PM	1811	0.0	1500	1500	311	15.80+	400	63.0	16.5	30.8	
3-4 PM	1695	0.0	1500	1489	206	15.78+	398	63.2	16.6	30.8	
4-5 PM	1608	0.0	1499	1493	115	15.81+	399	63.4	16.5	30.8	
5-6 PM	1527	0.0	1499	1490	36	15.81+	398	63.5	16.6	30.8	
6-7 PM	1442	0.0	1499	1442	0	15.12+	380	63.7	17.1	30.8	
7-8 PM	1117	0.0	1499	1117	0	5.44	164	64.3	32.4	35.3	
8-9 PM	962	0.0	1500	962	0	0.52	0	64.6	59.1	41.8	
9-10 PM	887	0.0	1500	887	0	0.51	0	64.7	59.2	42.1	
10-11 PM	693	0.0	1500	693	0	0.49	0	65.1	59.7	42.8	
11PM-MID	545	0.0	1500	545	0	0.48	0	65.4	60.1	43.3	

+ INDICATES QUEUEING EXCEEDS USER-SPECIFIED MAXIMUM LIMIT

----- SITE BREAKDOWN DELAYS -----	
BREAKDOWN DURATION (MINS)	0
RANGE OF QUEUE DELAY - MIN (VEH-H) MAX	0.0
AV BREAKDOWNS PER DAY	0.00
AV QUEUE DELAY/DAY (VEH-H)	0.0
AV TOTAL DELAY/DAY (VEH-H)	0.0

----- SITE ACCIDENT DELAYS -----	
BREAKDOWN DURATION (MINS)	0
RANGE OF QUEUE DELAY - MIN (VEH-H) MAX	0
AV BREAKDOWNS PER DAY	0
AV QUEUE DELAY/DAY (VEH-H)	0
AV TOTAL DELAY/DAY (VEH-H)	0

AVERAGE ACCIDENT NUMBERS (PIA/DAY)	
MAIN ROUTE WITHOUT WORKS	0.0242
MAIN ROUTE WITH WORKS	0.0209
'DIVERSION'	0.0041
PIA: Personal Injury Accidents	
IMPACTS ON ROAD USERS	
ROAD USER COSTS PER DAY	\$68,844
CONGESTED HOURS PER DAY*	9

*Delays Exceeding User-Specified Maximum

**USH 41: STH 15 TO STH 441 (OUTAGAMIE COUNTY)
CONTINUOUS (24 HOUR) CLOSURE
NO DIVERSION ROUTE (MAX QUEUE METHOD)**

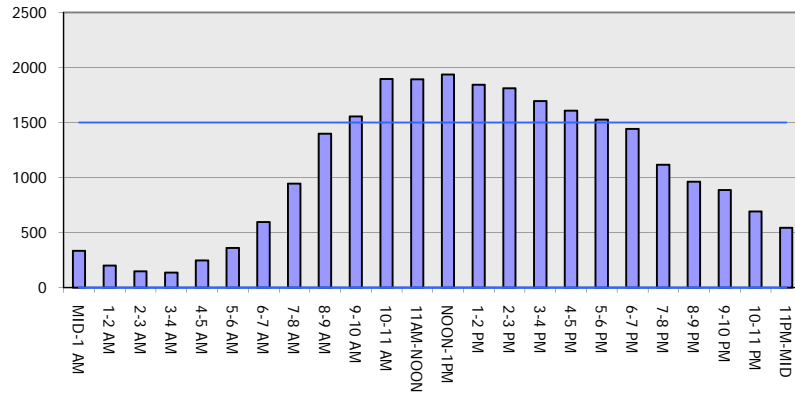
OCTOBER

Analyzed for 2009
Construction Season

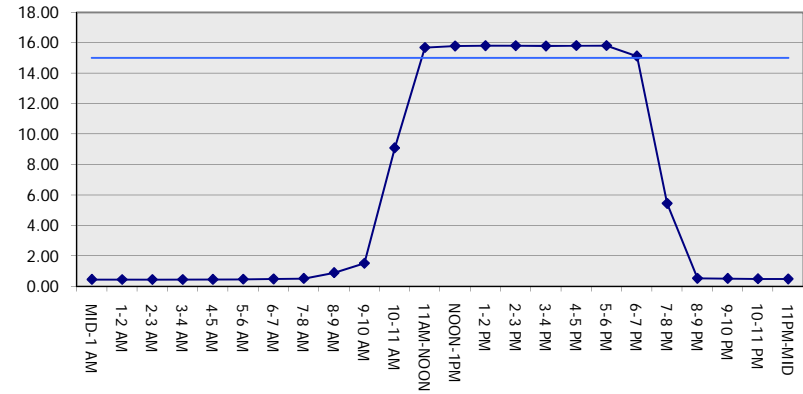
GRAPHICAL REPRESENTATION OF TRAFFIC MODEL INPUT AND OUTPUT

SATURDAY SOUTHBOUND DIRECTION

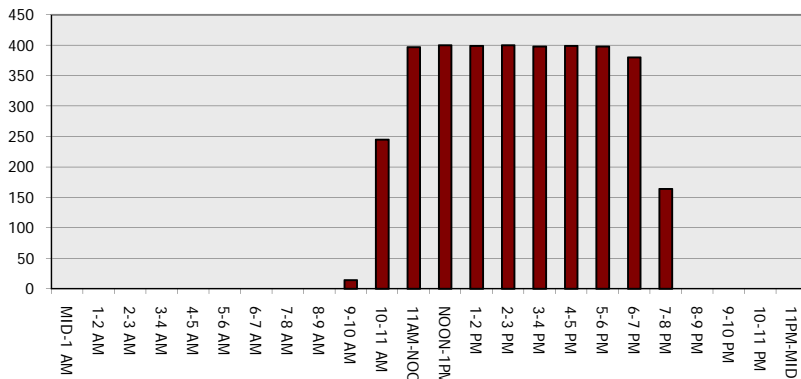
Main Route - Traffic Demand (Vehicles Per Hour)



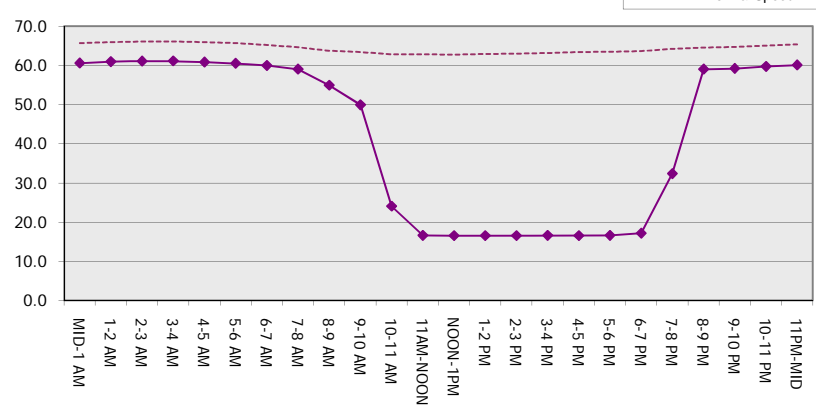
Main Route Average Delay Per Vehicle (Minutes)



Main Route - Average Queue Length (Vehicles)



Main Route - Average Speed (MPH)



USH 41: STH 15 TO STH 441 (OUTAGAMIE COUNTY) CONTINUOUS (24 HOUR) CLOSURE NO DIVERSION ROUTE (MAX QUEUE METHOD)	OCTOBER
	Analyzed for 2009 Construction Season

SUMMARY OF TRAFFIC MODEL OUTPUT

SATURDAY NORTHBOUND DIRECTION

TIME OF DAY	FLOWS AND CAPACITY IN VEH/HR						AVERAGE SPEEDS IN MPH			
	MAIN ROUTE		SITE CAPA CITY	FLOW		AV.DEL PER VEH (MINS)	AVERAGE QUEUE (VEH)	MAIN ROUTE		SITE
	DEMAND FLOW	PCT HEAVY		MAIN ROUTE	'DIVER TED'			WITHOUT WORK ZONE	WITH WORK ZONE	
MID-1 AM	270	0.0	1500	270	0	0.45	0	65.9	60.8	44.4
1-2 AM	175	0.0	1500	175	0	0.44	0	66.1	61.0	44.8
2-3 AM	171	0.0	1500	171	0	0.44	0	66.1	61.0	44.8
3-4 AM	102	0.0	1500	102	0	0.43	0	66.2	61.2	45.1
4-5 AM	147	0.0	1500	147	0	0.44	0	66.1	61.1	44.9
5-6 AM	249	0.0	1500	249	0	0.45	0	66.0	60.9	44.5
6-7 AM	413	0.0	1500	413	0	0.46	0	65.6	60.4	43.8
7-8 AM	728	0.0	1500	728	0	0.49	0	65.0	59.6	42.7
8-9 AM	1145	0.0	1500	1145	0	0.57	0	64.3	58.2	40.3
9-10 AM	1395	0.0	1499	1395	0	0.89	0	63.8	55.0	33.2
10-11 AM	1698	0.0	1499	1698	0	3.68	82	63.2	38.1	30.8
11AM-NOON	1946	0.0	1500	1703	243	13.66+	350	62.8	18.3	30.8
NOON-1PM	2016	0.0	1500	1500	516	15.77+	400	62.7	16.5	30.8
1-2 PM	1813	0.0	1500	1500	313	15.80+	400	63.0	16.5	30.8
2-3 PM	1871	0.0	1500	1500	371	15.79+	400	62.9	16.5	30.8
3-4 PM	1857	0.0	1500	1500	357	15.79+	400	62.9	16.5	30.8
4-5 PM	1933	0.0	1500	1500	433	15.78+	400	62.8	16.5	30.8
5-6 PM	1788	0.0	1500	1500	288	15.81+	400	63.0	16.5	30.8
6-7 PM	1402	0.0	1499	1402	0	14.59+	367	63.8	17.6	30.8
7-8 PM	1315	0.0	1500	1315	0	8.93	220	64.0	24.5	31.0
8-9 PM	1103	0.0	1500	1103	0	1.17	20	64.3	53.0	39.6
9-10 PM	871	0.0	1500	871	0	0.51	0	64.8	59.2	42.2
10-11 PM	577	0.0	1500	577	0	0.48	0	65.3	60.0	43.2
11PM-MID	412	0.0	1500	412	0	0.46	0	65.6	60.4	43.8

+ INDICATES QUEUEING EXCEEDS USER-SPECIFIED MAXIMUM LIMIT

BREAKDOWN DURATION (MINS)	0
RANGE OF QUEUE DELAY - MIN (VEH-H) MAX	0.0
AV BREAKDOWNS PER DAY	0.00
AV QUEUE DELAY/DAY (VEH-H)	0.0
AV TOTAL DELAY/DAY (VEH-H)	0.0

BREAKDOWN DURATION (MINS)	0
RANGE OF QUEUE DELAY - MIN (VEH-H) MAX	0
AV BREAKDOWNS PER DAY	0
AV QUEUE DELAY/DAY (VEH-H)	0
AV TOTAL DELAY/DAY (VEH-H)	0

MAIN ROUTE WITHOUT WORKS	0.0239
MAIN ROUTE WITH WORKS	0.0200
'DIVERSION'	0.0055

PIA: Personal Injury Accidents

ROAD USER COSTS PER DAY	\$69,491
CONGESTED HOURS PER DAY*	8

*Delays Exceeding User-Specified Maximum

**USH 41: STH 15 TO STH 441 (OUTAGAMIE COUNTY)
CONTINUOUS (24 HOUR) CLOSURE
NO DIVERSION ROUTE (MAX QUEUE METHOD)**

OCTOBER

Analyzed for 2009
Construction Season

GRAPHICAL REPRESENTATION OF TRAFFIC MODEL INPUT AND OUTPUT
SATURDAY NORTHBOUND DIRECTION

