

USH 41: STH 15 TO STH 441 (OUTAGAMIE COUNTY) CONTINUOUS (24 HOUR) CLOSURE NO DIVERSION ROUTE (MAX QUEUE METHOD)	AUGUST
	Analyzed for 2009 Construction Season

SUMMARY OF TRAFFIC MODEL OUTPUT

SUNDAY SOUTHBOUND DIRECTION

TIME OF DAY	FLOWS AND CAPACITY IN VEH/HR						AVERAGE SPEEDS IN MPH				
	MAIN ROUTE		SITE CAPA CITY	FLOW		AV.DEL PER VEH (MINS)	AVERAGE QUEUE (VEH)	MAIN ROUTE		SITE	
	DEMAND FLOW	PCT HEAVY		MAIN ROUTE	'DIVER TED'			WITHOUT WORK ZONE	WITH WORK ZONE		
MID-1 AM	354	0.0	1500	354	0	0.46	0	65.7	60.6	44.1	
1-2 AM	182	0.0	1500	182	0	0.44	0	66.1	61.0	44.8	
2-3 AM	157	0.0	1500	157	0	0.44	0	66.1	61.1	44.8	
3-4 AM	101	0.0	1500	101	0	0.43	0	66.2	61.2	45.1	
4-5 AM	120	0.0	1500	120	0	0.43	0	66.1	61.2	45.0	
5-6 AM	222	0.0	1500	222	0	0.44	0	66.0	60.9	44.6	
6-7 AM	262	0.0	1500	262	0	0.45	0	65.9	60.8	44.5	
7-8 AM	457	0.0	1500	457	0	0.47	0	65.5	60.3	43.7	
8-9 AM	741	0.0	1500	741	0	0.49	0	65.0	59.6	42.6	
9-10 AM	1096	0.0	1499	1096	0	0.58	0	64.3	58.2	40.1	
10-11 AM	1596	0.0	1499	1596	0	1.84	25	63.4	47.6	30.8	
11AM-NOON	1831	0.0	1500	1831	0	9.35	244	63.0	23.7	30.8	
NOON-1PM	2163	0.0	1499	1500	663	15.74+	399	62.3	16.5	30.8	
1-2 PM	1989	0.0	1500	1500	489	15.77+	400	62.7	16.5	30.8	
2-3 PM	1944	0.0	1500	1500	444	15.78+	400	62.8	16.5	30.8	
3-4 PM	1862	0.0	1500	1500	362	15.79+	400	62.9	16.5	30.8	
4-5 PM	1768	0.0	1500	1494	274	15.78+	399	63.1	16.5	30.8	
5-6 PM	1553	0.0	1499	1479	75	15.75+	397	63.5	16.6	30.8	
6-7 PM	1398	0.0	1499	1398	0	14.38+	361	63.8	17.8	30.8	
7-8 PM	1157	0.0	1499	1157	0	4.93	143	64.2	33.9	34.9	
8-9 PM	917	0.0	1500	917	0	0.51	0	64.6	59.2	42.0	
9-10 PM	727	0.0	1500	727	0	0.49	0	65.0	59.6	42.7	
10-11 PM	452	0.0	1500	452	0	0.47	0	65.5	60.4	43.7	
11PM-MID	286	0.0	1500	286	0	0.45	0	65.8	60.7	44.3	

+ INDICATES QUEUEING EXCEEDS USER-SPECIFIED MAXIMUM LIMIT

----- SITE BREAKDOWN DELAYS -----	
BREAKDOWN DURATION (MINS)	0
RANGE OF QUEUE DELAY - MIN (VEH-H) MAX	0.0
AV BREAKDOWNS PER DAY	0.00
AV QUEUE DELAY/DAY (VEH-H)	0.0
AV TOTAL DELAY/DAY (VEH-H)	0.0

----- SITE ACCIDENT DELAYS -----	
BREAKDOWN DURATION (MINS)	0
RANGE OF QUEUE DELAY - MIN (VEH-H) MAX	0
AV BREAKDOWNS PER DAY	0
AV QUEUE DELAY/DAY (VEH-H)	0
AV TOTAL DELAY/DAY (VEH-H)	0

AVERAGE ACCIDENT NUMBERS (PIA/DAY)	
MAIN ROUTE WITHOUT WORKS	0.0219
MAIN ROUTE WITH WORKS	0.0184
'DIVERSION'	0.0050
PIA: Personal Injury Accidents	
IMPACTS ON ROAD USERS	
ROAD USER COSTS PER DAY	\$64,080
CONGESTED HOURS PER DAY*	7

*Delays Exceeding User-Specified Maximum

**USH 41: STH 15 TO STH 441 (OUTAGAMIE COUNTY)
CONTINUOUS (24 HOUR) CLOSURE
NO DIVERSION ROUTE (MAX QUEUE METHOD)**

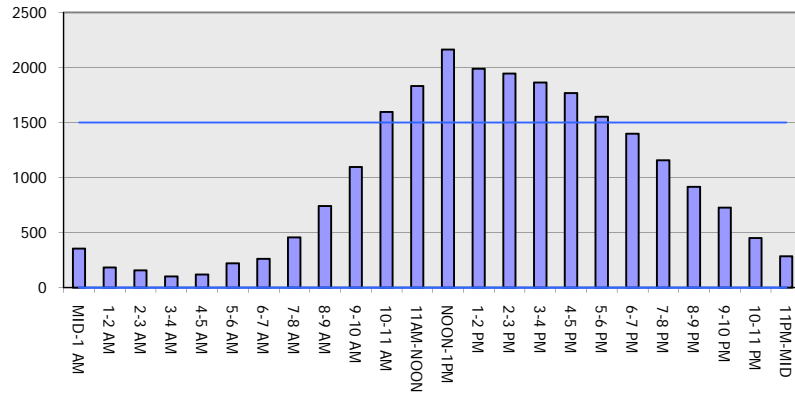
AUGUST

Analyzed for 2009
Construction Season

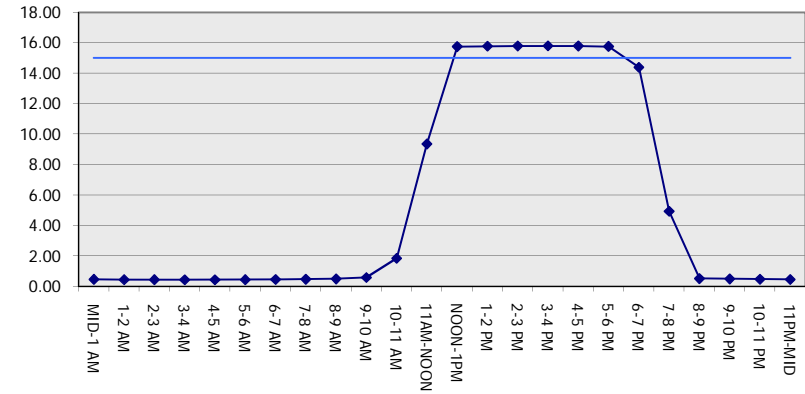
GRAPHICAL REPRESENTATION OF TRAFFIC MODEL INPUT AND OUTPUT

SUNDAY SOUTHBOUND DIRECTION

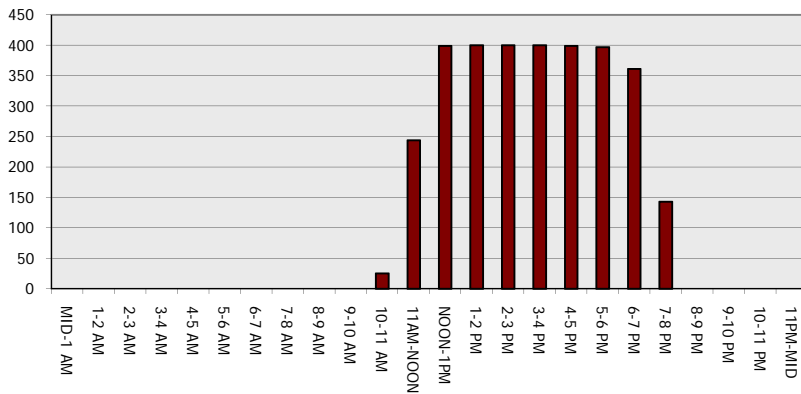
Main Route - Traffic Demand (Vehicles Per Hour)



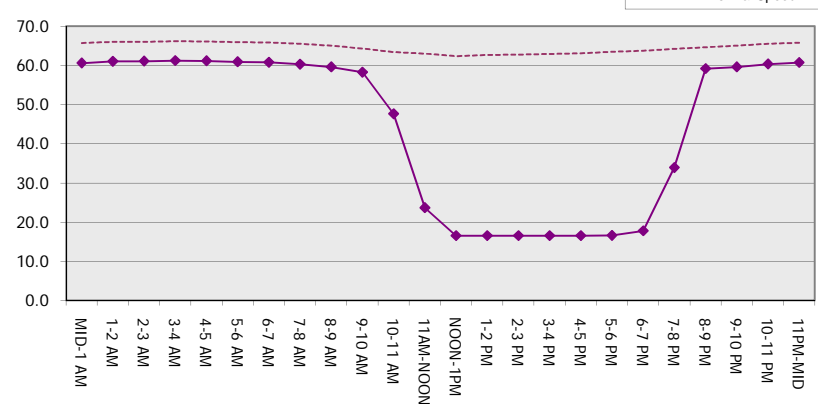
Main Route Average Delay Per Vehicle (Minutes)



Main Route - Average Queue Length (Vehicles)



Main Route - Average Speed (MPH)



USH 41: STH 15 TO STH 441 (OUTAGAMIE COUNTY) CONTINUOUS (24 HOUR) CLOSURE NO DIVERSION ROUTE (MAX QUEUE METHOD)	AUGUST
	Analyzed for 2009 Construction Season

SUMMARY OF TRAFFIC MODEL OUTPUT

SUNDAY NORTHBOUND DIRECTION

TIME OF DAY	FLOWS AND CAPACITY IN VEH/HR						AVERAGE SPEEDS IN MPH			
	MAIN ROUTE		SITE CAPA CITY	FLOW		AV.DEL PER VEH (MINS)	AVERAGE QUEUE (VEH)	MAIN ROUTE		SITE
	DEMAND FLOW	PCT HEAVY		MAIN ROUTE	'DIVER TED'			WITHOUT WORK ZONE	WITH WORK ZONE	
MID-1 AM	276	0.0	1500	276	0	0.45	0	65.9	60.8	44.4
1-2 AM	203	0.0	1500	203	0	0.44	0	66.0	61.0	44.6
2-3 AM	209	0.0	1500	209	0	0.44	0	66.0	61.0	44.6
3-4 AM	94	0.0	1500	94	0	0.43	0	66.2	61.3	45.1
4-5 AM	101	0.0	1500	101	0	0.43	0	66.2	61.2	45.1
5-6 AM	159	0.0	1500	159	0	0.44	0	66.1	61.1	44.8
6-7 AM	226	0.0	1500	226	0	0.44	0	66.0	60.9	44.6
7-8 AM	332	0.0	1500	332	0	0.45	0	65.8	60.7	44.2
8-9 AM	532	0.0	1500	532	0	0.47	0	65.4	60.1	43.4
9-10 AM	828	0.0	1500	828	0	0.50	0	64.8	59.4	42.3
10-11 AM	1128	0.0	1499	1128	0	0.58	0	64.3	58.1	39.9
11AM-NOON	1439	0.0	1499	1439	0	0.96	0	63.7	54.3	32.2
NOON-1PM	1645	0.0	1500	1645	0	3.36	68	63.3	39.6	30.8
1-2 PM	1604	0.0	1499	1604	0	8.20	196	63.4	25.6	30.8
2-3 PM	1718	0.0	1500	1649	69	13.50+	342	63.2	18.5	30.8
3-4 PM	1852	0.0	1500	1500	352	15.79+	400	62.9	16.5	30.8
4-5 PM	1808	0.0	1500	1500	308	15.80+	400	63.0	16.5	30.8
5-6 PM	1613	0.0	1500	1500	113	15.83+	400	63.4	16.5	30.8
6-7 PM	1345	0.0	1499	1345	0	13.32+	335	63.9	18.8	30.8
7-8 PM	1191	0.0	1499	1191	0	3.82	107	64.1	37.9	35.1
8-9 PM	986	0.0	1500	986	0	0.52	0	64.5	59.0	41.7
9-10 PM	689	0.0	1500	689	0	0.49	0	65.1	59.7	42.8
10-11 PM	488	0.0	1500	488	0	0.47	0	65.5	60.2	43.5
11PM-MID	260	0.0	1500	260	0	0.45	0	65.9	60.9	44.5

+ INDICATES QUEUEING EXCEEDS USER-SPECIFIED MAXIMUM LIMIT

----- SITE BREAKDOWN DELAYS -----	
BREAKDOWN DURATION (MINS)	0
RANGE OF QUEUE DELAY - MIN (VEH-H) MAX	0.0
AV BREAKDOWNS PER DAY	0.00
AV QUEUE DELAY/DAY (VEH-H)	0.0
AV TOTAL DELAY/DAY (VEH-H)	0.0

----- SITE ACCIDENT DELAYS -----	
BREAKDOWN DURATION (MINS)	0
RANGE OF QUEUE DELAY - MIN (VEH-H) MAX	0
AV BREAKDOWNS PER DAY	0
AV QUEUE DELAY/DAY (VEH-H)	0
AV TOTAL DELAY/DAY (VEH-H)	0

AVERAGE ACCIDENT NUMBERS (PIA/DAY)	
MAIN ROUTE WITHOUT WORKS	0.0195
MAIN ROUTE WITH WORKS	0.0174
'DIVERSION'	0.0018

PIA: Personal Injury Accidents

ECONOMIC IMPACT ON ROAD USERS	
ROAD USER COSTS PER DAY	\$43,044
CONGESTED HOURS PER DAY*	5

*Delays Exceeding User-Specified Maximum

**USH 41: STH 15 TO STH 441 (OUTAGAMIE COUNTY)
CONTINUOUS (24 HOUR) CLOSURE
NO DIVERSION ROUTE (MAX QUEUE METHOD)**

AUGUST
Analyzed for 2009
Construction Season

GRAPHICAL REPRESENTATION OF TRAFFIC MODEL INPUT AND OUTPUT
SUNDAY NORTHBOUND DIRECTION

