

<b>USH 41: STH 15 TO STH 441 (OUTAGAMIE COUNTY)                  CONTINUOUS (24 HOUR) CLOSURE                  NO DIVERSION ROUTE (MAX QUEUE METHOD)</b>	<b>AUGUST</b>
	Analyzed for 2009 Construction Season

**SUMMARY OF TRAFFIC MODEL OUTPUT**

SATURDAY SOUTHBOUND DIRECTION

TIME OF DAY	FLOWS AND CAPACITY IN VEH/HR						AVERAGE SPEEDS IN MPH			
	MAIN ROUTE		SITE CAPA CITY	FLOW		AV.DEL PER VEH (MINS)	AVERAGE QUEUE (VEH)	MAIN ROUTE		SITE
	DEMAND FLOW	PCT HEAVY		MAIN ROUTE	'DIVER TED'			WITHOUT WORK ZONE	WITH WORK ZONE	
MID-1 AM	319	0.0	1500	319	0	0.45	0	65.8	60.7	44.2
1-2 AM	172	0.0	1500	172	0	0.44	0	66.1	61.0	44.8
2-3 AM	172	0.0	1500	172	0	0.44	0	66.1	61.0	44.8
3-4 AM	159	0.0	1500	159	0	0.44	0	66.1	61.1	44.8
4-5 AM	195	0.0	1500	195	0	0.44	0	66.0	61.0	44.7
5-6 AM	319	0.0	1500	319	0	0.45	0	65.8	60.7	44.2
6-7 AM	498	0.0	1500	498	0	0.47	0	65.5	60.2	43.5
7-8 AM	856	0.0	1500	856	0	0.51	0	64.8	59.3	42.2
8-9 AM	1237	0.0	1499	1237	0	0.68	0	64.1	57.0	37.4
9-10 AM	1472	0.0	1499	1472	0	1.15	5	63.7	52.7	31.9
10-11 AM	1814	0.0	1500	1814	0	6.46	166	63.0	29.3	30.8
11AM-NOON	1852	0.0	1499	1555	296	15.56+	393	62.9	16.7	30.8
NOON-1PM	2000	0.0	1500	1500	500	15.77+	400	62.7	16.5	30.8
1-2 PM	1824	0.0	1500	1500	324	15.80+	400	63.0	16.5	30.8
2-3 PM	1680	0.0	1500	1500	180	15.82+	400	63.3	16.5	30.8
3-4 PM	1619	0.0	1500	1500	119	15.83+	400	63.3	16.5	30.8
4-5 PM	1584	0.0	1500	1501	83	15.83+	399	63.4	16.5	30.8
5-6 PM	1465	0.0	1500	1465	0	15.38+	387	63.7	16.9	30.8
6-7 PM	1166	0.0	1499	1166	0	7.63	207	64.2	27.0	33.5
7-8 PM	901	0.0	1500	901	0	0.53	0	64.7	59.1	42.0
8-9 PM	836	0.0	1500	836	0	0.50	0	64.8	59.4	42.3
9-10 PM	688	0.0	1500	688	0	0.49	0	65.1	59.7	42.8
10-11 PM	620	0.0	1500	620	0	0.48	0	65.2	59.9	43.0
11PM-MID	479	0.0	1500	479	0	0.47	0	65.5	60.2	43.6

+ INDICATES QUEUEING EXCEEDS USER-SPECIFIED MAXIMUM LIMIT

*----- SITE BREAKDOWN DELAYS -----*	
BREAKDOWN DURATION (MINS)	0
RANGE OF QUEUE DELAY - MIN (VEH-H) MAX	0.0
AV BREAKDOWNS PER DAY	0.00
AV QUEUE DELAY/DAY (VEH-H)	0.0
AV TOTAL DELAY/DAY (VEH-H)	0.0

*----- SITE ACCIDENT DELAYS -----*	
BREAKDOWN DURATION (MINS)	0
RANGE OF QUEUE DELAY - MIN (VEH-H) MAX	0
AV BREAKDOWNS PER DAY	0
AV QUEUE DELAY/DAY (VEH-H)	0
AV TOTAL DELAY/DAY (VEH-H)	0

AVERAGE ACCIDENT NUMBERS (PIA/DAY)	
MAIN ROUTE WITHOUT WORKS	0.0225
MAIN ROUTE WITH WORKS	0.0196
'DIVERSION'	0.0033
PIA: Personal Injury Accidents	
IMPACTS ON ROAD USERS	
ROAD USER COSTS PER DAY	\$60,101
CONGESTED HOURS PER DAY*	7

\*Delays Exceeding User-Specified Maximum

**USH 41: STH 15 TO STH 441 (OUTAGAMIE COUNTY)  
CONTINUOUS (24 HOUR) CLOSURE  
NO DIVERSION ROUTE (MAX QUEUE METHOD)**

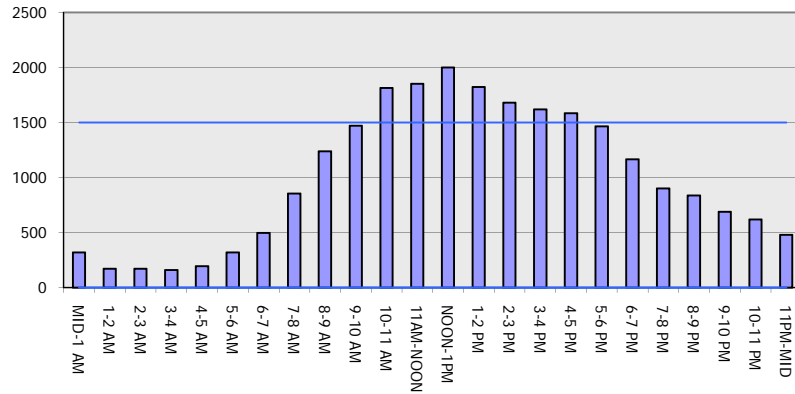
**AUGUST**

Analyzed for 2009  
Construction Season

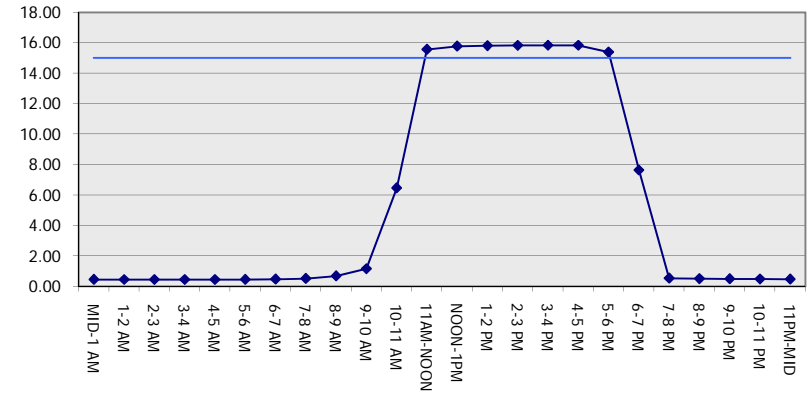
**GRAPHICAL REPRESENTATION OF TRAFFIC MODEL INPUT AND OUTPUT**

**SATURDAY SOUTHBOUND DIRECTION**

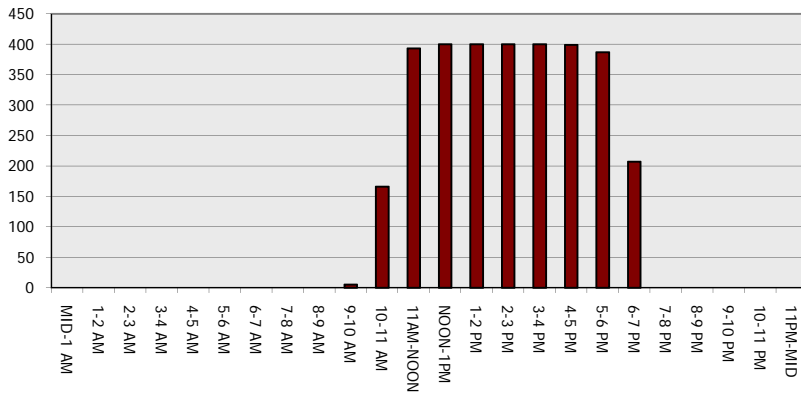
**Main Route - Traffic Demand (Vehicles Per Hour)**



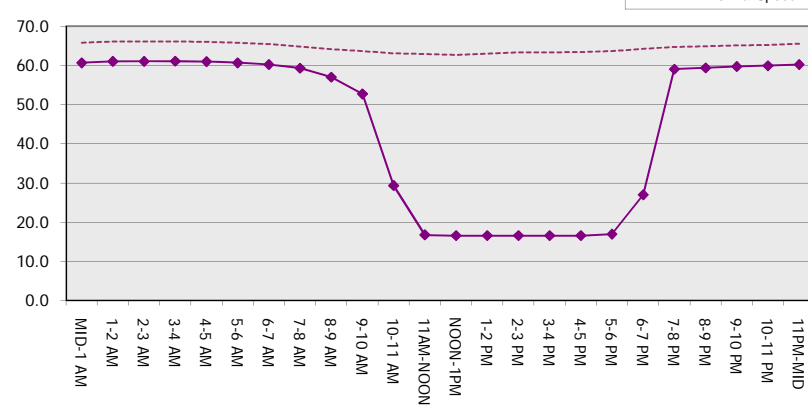
**Main Route Average Delay Per Vehicle (Minutes)**



**Main Route - Average Queue Length (Vehicles)**



**Main Route - Average Speed (MPH)**



<b>USH 41: STH 15 TO STH 441 (OUTAGAMIE COUNTY)                  CONTINUOUS (24 HOUR) CLOSURE                  NO DIVERSION ROUTE (MAX QUEUE METHOD)</b>	<b>AUGUST</b>
	Analyzed for 2009 Construction Season

**SUMMARY OF TRAFFIC MODEL OUTPUT**

**SATURDAY NORTHBOUND DIRECTION**

TIME OF DAY	FLOWS AND CAPACITY IN VEH/HR							AVERAGE SPEEDS IN MPH		
	MAIN ROUTE		SITE CAPA CITY	FLOW		AV.DEL PER VEH (MINS)	AVERAGE QUEUE (VEH)	MAIN ROUTE		SITE
	DEMAND FLOW	PCT HEAVY		MAIN ROUTE	'DIVER TED'			WITHOUT WORK ZONE	WITH WORK ZONE	
MID-1 AM	337	0.0	1500	337	0	0.46	0	65.8	60.6	44.2
1-2 AM	185	0.0	1500	185	0	0.44	0	66.0	61.0	44.7
2-3 AM	183	0.0	1500	183	0	0.44	0	66.1	61.0	44.8
3-4 AM	124	0.0	1500	124	0	0.43	0	66.1	61.2	45.0
4-5 AM	155	0.0	1500	155	0	0.44	0	66.1	61.1	44.8
5-6 AM	240	0.0	1500	240	0	0.45	0	66.0	60.9	44.5
6-7 AM	391	0.0	1500	391	0	0.46	0	65.6	60.5	43.9
7-8 AM	587	0.0	1500	587	0	0.48	0	65.3	60.0	43.2
8-9 AM	905	0.0	1500	905	0	0.51	0	64.7	59.2	42.0
9-10 AM	1192	0.0	1499	1192	0	0.63	0	64.1	57.6	38.7
10-11 AM	1606	0.0	1499	1606	0	2.36	39	63.4	44.6	30.8
11AM-NOON	1617	0.0	1499	1617	0	6.83	159	63.3	28.5	30.8
NOON-1PM	1745	0.0	1500	1681	64	13.08+	332	63.2	18.9	30.8
1-2 PM	1735	0.0	1500	1500	235	15.81+	400	63.2	16.5	30.8
2-3 PM	1774	0.0	1500	1500	274	15.81+	400	63.1	16.5	30.8
3-4 PM	1728	0.0	1500	1500	228	15.82+	400	63.2	16.5	30.8
4-5 PM	1745	0.0	1500	1500	245	15.81+	400	63.2	16.5	30.8
5-6 PM	1569	0.0	1500	1492	77	15.80+	399	63.5	16.6	30.8
6-7 PM	1165	0.0	1499	1165	0	9.20	246	64.2	24.1	33.0
7-8 PM	959	0.0	1500	959	0	0.62	3	64.6	58.0	41.8
8-9 PM	988	0.0	1500	988	0	0.52	0	64.5	59.0	41.7
9-10 PM	1006	0.0	1500	1006	0	0.52	0	64.5	58.9	41.7
10-11 PM	838	0.0	1500	838	0	0.50	0	64.8	59.4	42.2
11PM-MID	470	0.0	1500	470	0	0.47	0	65.5	60.3	43.6

+ INDICATES QUEUEING EXCEEDS USER-SPECIFIED MAXIMUM LIMIT

*----- SITE BREAKDOWN DELAYS -----*	
BREAKDOWN DURATION (MINS)	0
RANGE OF QUEUE DELAY - MIN (VEH-H) MAX	0.0
AV BREAKDOWNS PER DAY	0.00
AV QUEUE DELAY/DAY (VEH-H)	0.0
AV TOTAL DELAY/DAY (VEH-H)	0.0

*----- SITE ACCIDENT DELAYS -----*	
BREAKDOWN DURATION (MINS)	0
RANGE OF QUEUE DELAY - MIN (VEH-H) MAX	0
AV BREAKDOWNS PER DAY	0
AV QUEUE DELAY/DAY (VEH-H)	0
AV TOTAL DELAY/DAY (VEH-H)	0

AVERAGE ACCIDENT NUMBERS (PIA/DAY)	
MAIN ROUTE WITHOUT WORKS	0.0218
MAIN ROUTE WITH WORKS	0.0193
'DIVERSION'	0.0024

PIA: Personal Injury Accidents

ECONOMIC IMPACT ON ROAD USERS	
ROAD USER COSTS PER DAY	\$52,532
CONGESTED HOURS PER DAY*	6

\*Delays Exceeding User-Specified Maximum

**USH 41: STH 15 TO STH 441 (OUTAGAMIE COUNTY)  
CONTINUOUS (24 HOUR) CLOSURE  
NO DIVERSION ROUTE (MAX QUEUE METHOD)**

**AUGUST**  
Analyzed for 2009  
Construction Season

**GRAPHICAL REPRESENTATION OF TRAFFIC MODEL INPUT AND OUTPUT**  
**SATURDAY NORTHBOUND DIRECTION**

