

**USH 41: STH 15 TO STH 441 (OUTAGAMIE COUNTY)  
CONTINUOUS (24 HOUR) CLOSURE  
NO DIVERSION ROUTE (MAX QUEUE METHOD)**

**MAY**  
Analyzed for 2009  
Construction Season

**SUMMARY OF TRAFFIC MODEL OUTPUT**  
FRIDAY SOUTHBOUND DIRECTION

TIME OF DAY	FLOWS AND CAPACITY IN VEH/HR							AVERAGE SPEEDS IN MPH			
	MAIN ROUTE		SITE CAPA CITY	FLOW		AV.DEL PER VEH (MINS)	AVERAGE QUEUE (VEH)	MAIN ROUTE		SITE	
	DEMAND FLOW	PCT HEAVY		MAIN ROUTE	'DIVER TED'			WITHOUT WORK ZONE	WITH WORK ZONE		
MID-1 AM	147	0.0	1500	147	0	0.44	0	66.1	61.1	44.9	
1-2 AM	141	0.0	1500	141	0	0.44	0	66.1	61.2	44.9	
2-3 AM	157	0.0	1500	157	0	0.44	0	66.1	61.1	44.8	
3-4 AM	157	0.0	1500	157	0	0.44	0	66.1	61.1	44.8	
4-5 AM	442	0.0	1500	442	0	0.47	0	65.6	60.4	43.7	
5-6 AM	944	0.0	1499	944	0	0.55	0	64.6	58.7	41.0	
6-7 AM	2306	0.0	1499	1885	421	8.60+	247	62.1	24.7	30.8	
7-8 AM	3620	0.0	1499	1500	2120	14.26+	399	49.4	16.5	30.8	
8-9 AM	2355	0.0	1500	1500	855	15.71+	400	62.0	16.5	30.8	
9-10 AM	1831	0.0	1500	1500	331	15.80+	400	63.0	16.5	30.8	
10-11 AM	1917	0.0	1500	1500	417	15.78+	400	62.8	16.5	30.8	
11AM-NOON	1968	0.0	1500	1500	468	15.78+	400	62.7	16.5	30.8	
NOON-1PM	2138	0.0	1500	1500	638	15.75+	400	62.4	16.5	30.8	
1-2 PM	2220	0.0	1500	1500	720	15.73+	400	62.2	16.5	30.8	
2-3 PM	2335	0.0	1500	1500	835	15.71+	400	62.0	16.5	30.8	
3-4 PM	2750	0.0	1500	1500	1250	15.35+	400	58.3	16.5	30.8	
4-5 PM	3081	0.0	1500	1500	1581	14.98+	400	55.0	16.5	30.8	
5-6 PM	2755	0.0	1500	1500	1255	15.35+	400	58.3	16.5	30.8	
6-7 PM	1950	0.0	1500	1500	450	15.78+	400	62.8	16.5	30.8	
7-8 PM	1268	0.0	1500	1268	0	11.72	299	64.0	20.5	31.5	
8-9 PM	976	0.0	1500	976	0	1.18	24	64.6	53.2	41.4	
9-10 PM	898	0.0	1500	898	0	0.51	0	64.7	59.2	42.0	
10-11 PM	689	0.0	1500	689	0	0.49	0	65.1	59.7	42.8	
11PM-MID	431	0.0	1500	431	0	0.46	0	65.6	60.4	43.8	

+ INDICATES QUEUEING EXCEEDS USER-SPECIFIED MAXIMUM LIMIT

*----- SITE BREAKDOWN DELAYS -----*	
BREAKDOWN DURATION (MINS)	0
RANGE OF QUEUE DELAY - MIN (VEH-H) MAX	0.0
AV BREAKDOWNS PER DAY	0.00
AV QUEUE DELAY/DAY (VEH-H)	0.0
AV TOTAL DELAY/DAY (VEH-H)	0.0

*----- SITE ACCIDENT DELAYS -----*	
BREAKDOWN DURATION (MINS)	0
RANGE OF QUEUE DELAY - MIN (VEH-H) MAX	0
AV BREAKDOWNS PER DAY	0
AV QUEUE DELAY/DAY (VEH-H)	0
AV TOTAL DELAY/DAY (VEH-H)	0

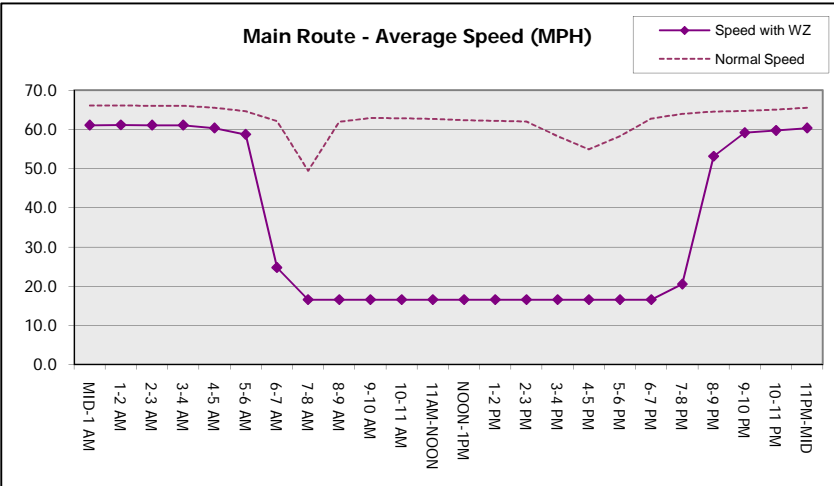
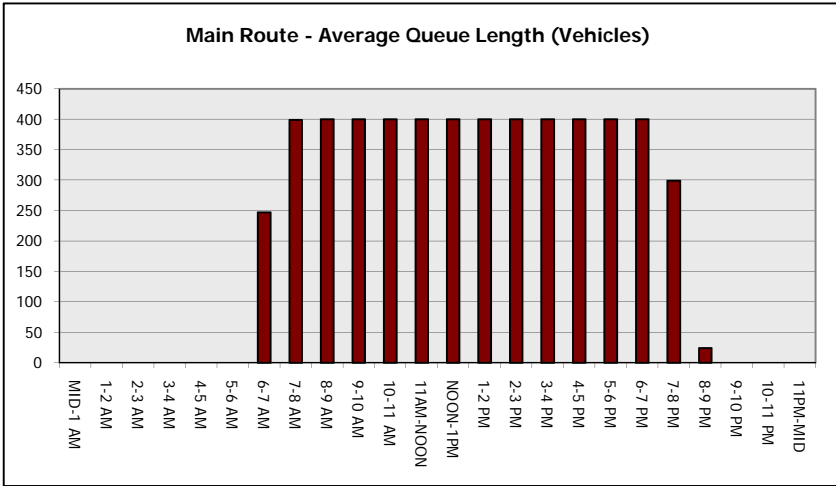
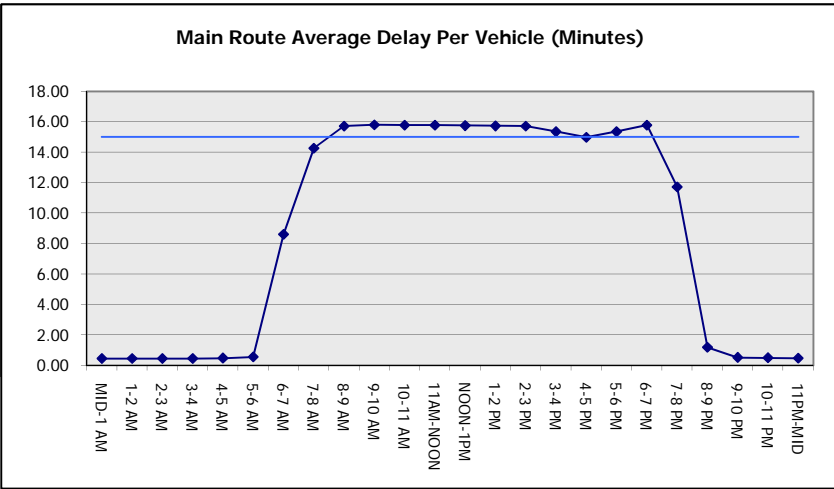
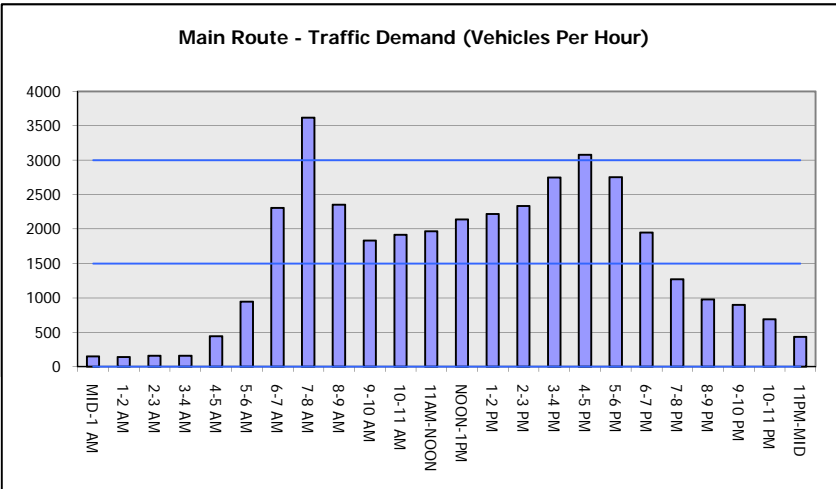
AVERAGE ACCIDENT NUMBERS (PIA/DAY)	
MAIN ROUTE WITHOUT WORKS	0.0352
MAIN ROUTE WITH WORKS	0.0228
'DIVERSION'	0.0247
PIA: Personal Injury Accidents	
IMPACTS ON ROAD USERS	
ROAD USER COSTS PER DAY	\$108,759
CONGESTED HOURS PER DAY*	13

\*Delays Exceeding User-Specified Maximum

**USH 41: STH 15 TO STH 441 (OUTAGAMIE COUNTY)  
CONTINUOUS (24 HOUR) CLOSURE  
NO DIVERSION ROUTE (MAX QUEUE METHOD)**

**MAY**  
Analyzed for 2009  
Construction Season

**GRAPHICAL REPRESENTATION OF TRAFFIC MODEL INPUT AND OUTPUT**  
**FRIDAY SOUTHBOUND DIRECTION**



<b>USH 41: STH 15 TO STH 441 (OUTAGAMIE COUNTY)                  CONTINUOUS (24 HOUR) CLOSURE                  NO DIVERSION ROUTE (MAX QUEUE METHOD)</b>	<b>MAY</b>
	Analyzed for 2009 Construction Season

**SUMMARY OF TRAFFIC MODEL OUTPUT**

FRIDAY NORTHBOUND DIRECTION

TIME OF DAY	FLOWS AND CAPACITY IN VEH/HR							AVERAGE SPEEDS IN MPH		
	MAIN ROUTE		SITE CAPA CITY	FLOW		AV.DEL PER VEH (MINS)	AVERAGE QUEUE (VEH)	MAIN ROUTE		SITE
	DEMAND FLOW	PCT HEAVY		MAIN ROUTE	'DIVER TED'			WITHOUT WORK ZONE	WITH WORK ZONE	
MID-1 AM	240	0.0	1500	240	0	0.45	0	66.0	60.9	44.5
1-2 AM	141	0.0	1500	141	0	0.44	0	66.1	61.2	44.9
2-3 AM	209	0.0	1500	209	0	0.44	0	66.0	61.0	44.6
3-4 AM	114	0.0	1500	114	0	0.43	0	66.2	61.2	45.0
4-5 AM	259	0.0	1500	259	0	0.45	0	65.9	60.9	44.5
5-6 AM	708	0.0	1500	708	0	0.49	0	65.1	59.7	42.7
6-7 AM	1458	0.0	1499	1458	0	1.47	19	63.7	50.4	33.7
7-8 AM	2306	0.0	1500	1881	425	12.73+	334	62.1	19.2	30.8
8-9 AM	1813	0.0	1499	1460	353	15.65+	396	63.0	16.6	30.8
9-10 AM	1584	0.0	1499	1479	105	15.75+	397	63.4	16.6	30.8
10-11 AM	1874	0.0	1500	1500	374	15.79+	400	62.9	16.5	30.8
11AM-NOON	2066	0.0	1500	1500	566	15.76+	400	62.5	16.5	30.8
NOON-1PM	2221	0.0	1500	1500	721	15.73+	400	62.2	16.5	30.8
1-2 PM	2394	0.0	1500	1500	894	15.70+	400	61.9	16.5	30.8
2-3 PM	2730	0.0	1500	1500	1230	15.37+	400	58.6	16.5	30.8
3-4 PM	3345	0.0	1500	1500	1845	14.64+	400	52.2	16.5	30.8
4-5 PM	3637	0.0	1500	1500	2137	14.23+	400	49.2	16.5	30.8
5-6 PM	3196	0.0	1500	1500	1696	14.83+	400	53.8	16.5	30.8
6-7 PM	2323	0.0	1500	1500	823	15.71+	400	62.0	16.5	30.8
7-8 PM	1768	0.0	1500	1500	268	15.81+	400	63.1	16.5	30.8
8-9 PM	1473	0.0	1500	1454	19	15.37+	387	63.7	16.9	30.8
9-10 PM	1243	0.0	1499	1243	0	9.52	244	64.1	23.5	32.0
10-11 PM	801	0.0	1500	801	0	0.71	7	64.9	57.4	42.4
11PM-MID	485	0.0	1500	485	0	0.47	0	65.5	60.2	43.6

+ INDICATES QUEUEING EXCEEDS USER-SPECIFIED MAXIMUM LIMIT

*----- SITE BREAKDOWN DELAYS -----*	
BREAKDOWN DURATION (MINS)	0
RANGE OF QUEUE DELAY - MIN (VEH-H) MAX	0.0
AV BREAKDOWNS PER DAY	0.00
AV QUEUE DELAY/DAY (VEH-H)	0.0
AV TOTAL DELAY/DAY (VEH-H)	0.0

*----- SITE ACCIDENT DELAYS -----*	
BREAKDOWN DURATION (MINS)	0
RANGE OF QUEUE DELAY - MIN (VEH-H) MAX	0
AV BREAKDOWNS PER DAY	0
AV QUEUE DELAY/DAY (VEH-H)	0
AV TOTAL DELAY/DAY (VEH-H)	0

AVERAGE ACCIDENT NUMBERS (PIA/DAY)	
MAIN ROUTE WITHOUT WORKS	0.0361
MAIN ROUTE WITH WORKS	0.0235
'DIVERSION'	0.0249

PIA: Personal Injury Accidents

ECONOMIC IMPACT ON ROAD USERS	
ROAD USER COSTS PER DAY	\$114,762
CONGESTED HOURS PER DAY*	14

\*Delays Exceeding User-Specified Maximum

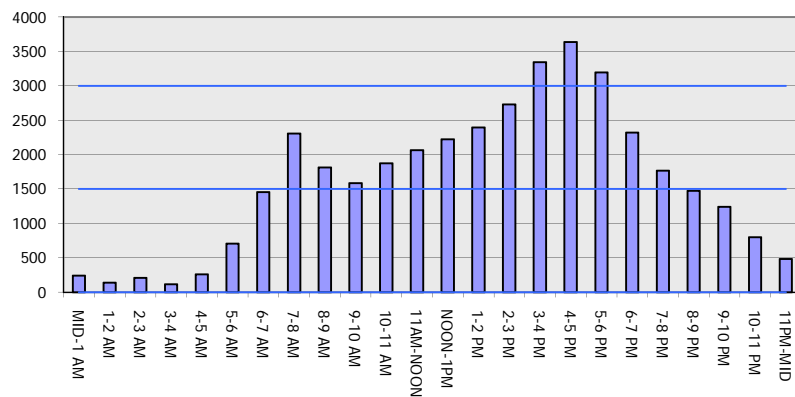
**USH 41: STH 15 TO STH 441 (OUTAGAMIE COUNTY)  
CONTINUOUS (24 HOUR) CLOSURE  
NO DIVERSION ROUTE (MAX QUEUE METHOD)**

**MAY**  
Analyzed for 2009  
Construction Season

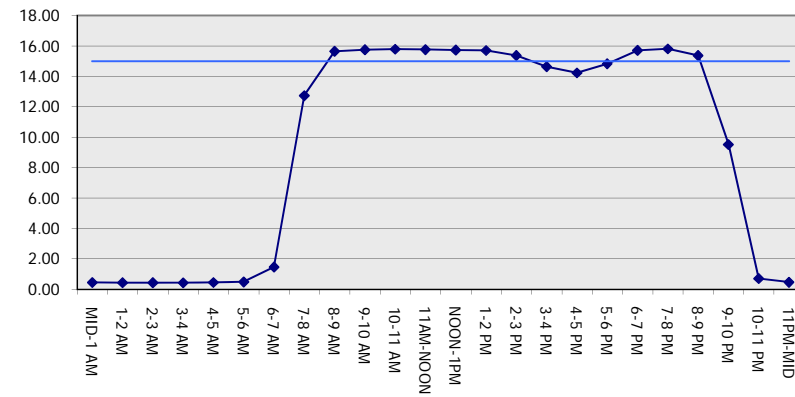
**GRAPHICAL REPRESENTATION OF TRAFFIC MODEL INPUT AND OUTPUT**

**FRIDAY NORTHBOUND DIRECTION**

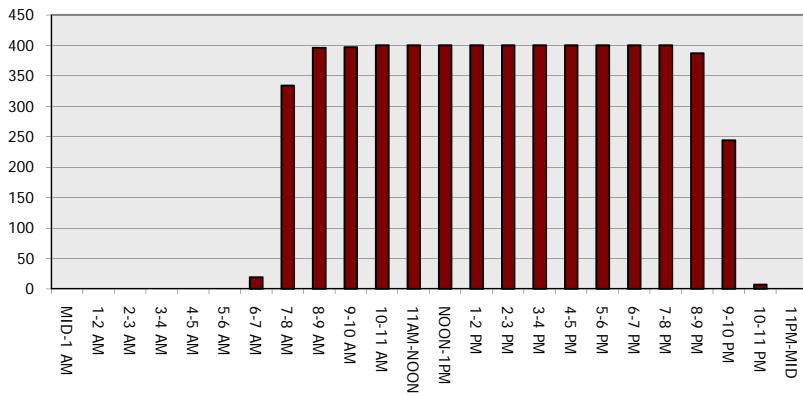
**Main Route - Traffic Demand (Vehicles Per Hour)**



**Main Route Average Delay Per Vehicle (Minutes)**



**Main Route - Average Queue Length (Vehicles)**



**Main Route - Average Speed (MPH)**

