

USH 41: STH 15 TO STH 125 (OUTAGAMIE COUNTY) CONTINUOUS (24 HOUR) CLOSURE NO DIVERSION ROUTE (MAX QUEUE METHOD)	OCTOBER
	Analyzed for 2009 Construction Season

SUMMARY OF TRAFFIC MODEL OUTPUT

SUNDAY SOUTHBOUND DIRECTION

TIME OF DAY	FLOWS AND CAPACITY IN VEH/HR						AVERAGE SPEEDS IN MPH			
	MAIN ROUTE		SITE CAPA CITY	FLOW		AV.DEL PER VEH (MINS)	AVERAGE QUEUE (VEH)	MAIN ROUTE		SITE
	DEMAND FLOW	PCT HEAVY		MAIN ROUTE	'DIVER TED'			WITHOUT WORK ZONE	WITH WORK ZONE	
MID-1 AM	362	0.0	3000	362	0	0.36	0	70.2	56.9	49.7
1-2 AM	235	0.0	3000	235	0	0.36	0	70.2	56.9	49.7
2-3 AM	232	0.0	3000	232	0	0.36	0	70.2	56.9	49.7
3-4 AM	150	0.0	3000	150	0	0.36	0	70.2	56.9	49.7
4-5 AM	131	0.0	3000	131	0	0.36	0	70.2	56.9	49.7
5-6 AM	175	0.0	3000	175	0	0.36	0	70.2	56.9	49.7
6-7 AM	277	0.0	3000	277	0	0.36	0	70.2	56.9	49.7
7-8 AM	355	0.0	3000	355	0	0.36	0	70.2	56.9	49.7
8-9 AM	614	0.0	3000	614	0	0.36	0	70.0	56.8	49.7
9-10 AM	923	0.0	3000	923	0	0.35	0	69.6	56.8	49.7
10-11 AM	1296	0.0	3000	1296	0	0.35	0	69.1	56.6	49.7
11AM-NOON	1673	0.0	3000	1673	0	0.34	0	68.7	56.4	49.7
NOON-1PM	1971	0.0	3000	1971	0	0.34	0	68.3	56.3	49.7
1-2 PM	2084	0.0	3000	2084	0	0.33	0	68.1	56.3	49.7
2-3 PM	2229	0.0	3000	2229	0	0.33	0	67.9	56.3	49.7
3-4 PM	2412	0.0	3000	2412	0	0.34	0	67.8	55.7	49.0
4-5 PM	2459	0.0	3000	2459	0	0.38	0	67.7	54.8	47.8
5-6 PM	2265	0.0	3000	2265	0	0.33	0	67.9	56.3	49.7
6-7 PM	1872	0.0	3000	1872	0	0.34	0	68.4	56.4	49.7
7-8 PM	1295	0.0	3000	1295	0	0.35	0	69.1	56.6	49.7
8-9 PM	875	0.0	3000	875	0	0.35	0	69.6	56.8	49.7
9-10 PM	632	0.0	3000	632	0	0.36	0	69.9	56.8	49.7
10-11 PM	447	0.0	3000	447	0	0.36	0	70.2	56.9	49.7
11PM-MID	550	0.0	3000	550	0	0.36	0	70.0	56.9	49.7

----- SITE BREAKDOWN DELAYS -----	
BREAKDOWN DURATION (MINS)	0
RANGE OF QUEUE DELAY - MIN (VEH-H) MAX	0.0
AV BREAKDOWNS PER DAY	0.00
AV QUEUE DELAY/DAY (VEH-H)	0.0
AV TOTAL DELAY/DAY (VEH-H)	0.0

----- SITE ACCIDENT DELAYS -----	
BREAKDOWN DURATION (MINS)	0
RANGE OF QUEUE DELAY - MIN (VEH-H) MAX	0
AV BREAKDOWNS PER DAY	0
AV QUEUE DELAY/DAY (VEH-H)	0
AV TOTAL DELAY/DAY (VEH-H)	0

AVERAGE ACCIDENT NUMBERS (PIA/DAY)	
MAIN ROUTE WITHOUT WORKS	0.0073
MAIN ROUTE WITH WORKS	0.0056
'DIVERSION'	0.0000
PIA: Personal Injury Accidents	
IMPACTS ON ROAD USERS	
ROAD USER COSTS PER DAY	\$2,183
CONGESTED HOURS PER DAY*	0

*Delays Exceeding User-Specified Maximum

**USH 41: STH 15 TO STH 125 (OUTAGAMIE COUNTY)
CONTINUOUS (24 HOUR) CLOSURE
NO DIVERSION ROUTE (MAX QUEUE METHOD)**

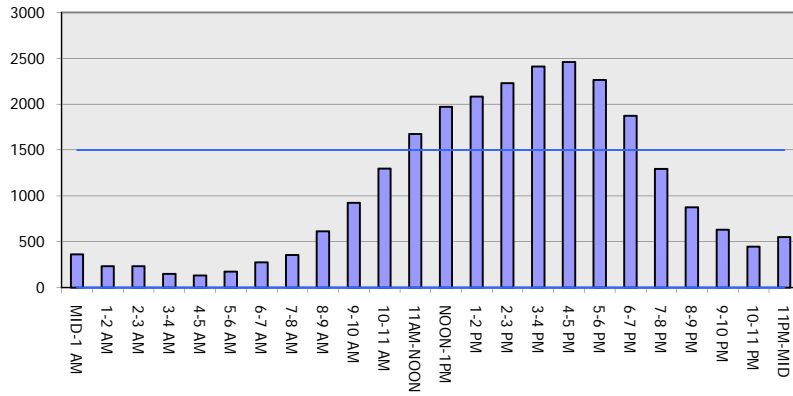
OCTOBER

Analyzed for 2009
Construction Season

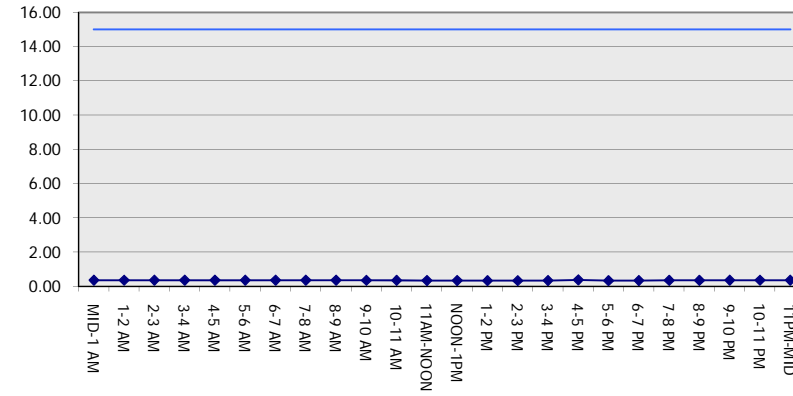
GRAPHICAL REPRESENTATION OF TRAFFIC MODEL INPUT AND OUTPUT

SUNDAY SOUTHBOUND DIRECTION

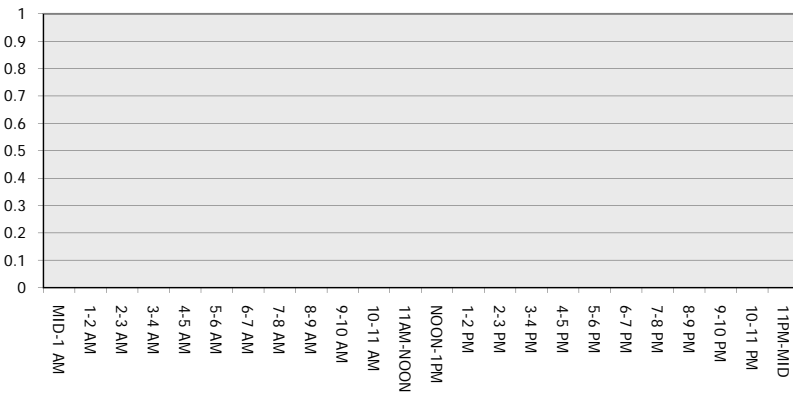
Main Route - Traffic Demand (Vehicles Per Hour)



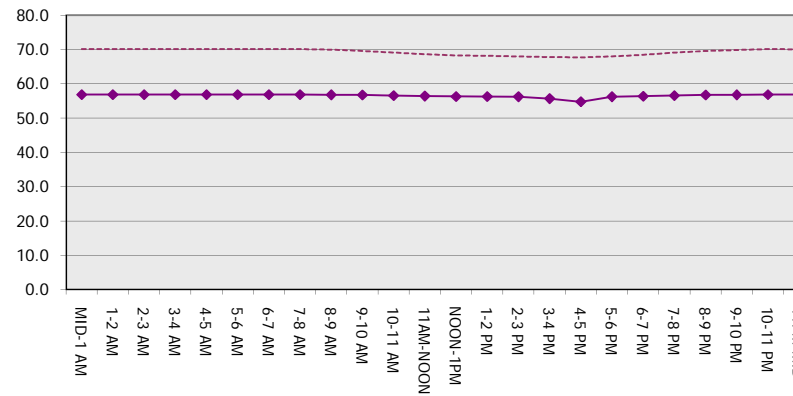
Main Route Average Delay Per Vehicle (Minutes)



Main Route - Average Queue Length (Vehicles)



Main Route - Average Speed (MPH)



USH 41: STH 15 TO STH 125 (OUTAGAMIE COUNTY) CONTINUOUS (24 HOUR) CLOSURE NO DIVERSION ROUTE (MAX QUEUE METHOD)	OCTOBER
	Analyzed for 2009 Construction Season

SUMMARY OF TRAFFIC MODEL OUTPUT

SUNDAY NORTHBOUND DIRECTION

TIME OF DAY	FLOWS AND CAPACITY IN VEH/HR							AVERAGE SPEEDS IN MPH		
	MAIN ROUTE		SITE CAPA CITY	FLOW		AV.DEL PER VEH (MINS)	AVERAGE QUEUE (VEH)	MAIN ROUTE		SITE
	DEMAND FLOW	PCT HEAVY		MAIN ROUTE	'DIVER TED'			WITHOUT WORK ZONE	WITH WORK ZONE	
MID-1 AM	289	0.0	3000	289	0	0.36	0	70.2	56.9	49.7
1-2 AM	198	0.0	3000	198	0	0.36	0	70.2	56.9	49.7
2-3 AM	158	0.0	3000	158	0	0.36	0	70.2	56.9	49.7
3-4 AM	106	0.0	3000	106	0	0.36	0	70.2	56.9	49.7
4-5 AM	98	0.0	3000	98	0	0.36	0	70.2	56.9	49.7
5-6 AM	178	0.0	3000	178	0	0.36	0	70.2	56.9	49.7
6-7 AM	260	0.0	3000	260	0	0.36	0	70.2	56.9	49.7
7-8 AM	442	0.0	3000	442	0	0.36	0	70.2	56.9	49.7
8-9 AM	886	0.0	3000	886	0	0.35	0	69.6	56.8	49.7
9-10 AM	1448	0.0	3000	1448	0	0.34	0	68.9	56.5	49.7
10-11 AM	1764	0.0	3000	1764	0	0.34	0	68.6	56.4	49.7
11AM-NOON	1865	0.0	3000	1865	0	0.34	0	68.4	56.4	49.7
NOON-1PM	1953	0.0	3000	1953	0	0.34	0	68.3	56.4	49.7
1-2 PM	1837	0.0	3000	1837	0	0.34	0	68.4	56.4	49.7
2-3 PM	1849	0.0	3000	1849	0	0.34	0	68.4	56.4	49.7
3-4 PM	1950	0.0	3000	1950	0	0.34	0	68.3	56.4	49.7
4-5 PM	1822	0.0	3000	1822	0	0.34	0	68.5	56.4	49.7
5-6 PM	1489	0.0	3000	1489	0	0.34	0	68.9	56.5	49.7
6-7 PM	1219	0.0	3000	1219	0	0.35	0	69.2	56.6	49.7
7-8 PM	867	0.0	3000	867	0	0.35	0	69.7	56.8	49.7
8-9 PM	652	0.0	3000	652	0	0.36	0	69.9	56.8	49.7
9-10 PM	487	0.0	3000	487	0	0.36	0	70.1	56.9	49.7
10-11 PM	365	0.0	3000	365	0	0.36	0	70.2	56.9	49.7
11PM-MID	213	0.0	3000	213	0	0.36	0	70.2	56.9	49.7

----- SITE BREAKDOWN DELAYS -----	
BREAKDOWN DURATION (MINS)	0
RANGE OF QUEUE DELAY - MIN (VEH-H) MAX	0.0
AV BREAKDOWNS PER DAY	0.00
AV QUEUE DELAY/DAY (VEH-H)	0.0
AV TOTAL DELAY/DAY (VEH-H)	0.0

----- SITE ACCIDENT DELAYS -----	
BREAKDOWN DURATION (MINS)	0
RANGE OF QUEUE DELAY - MIN (VEH-H) MAX	0
AV BREAKDOWNS PER DAY	0
AV QUEUE DELAY/DAY (VEH-H)	0
AV TOTAL DELAY/DAY (VEH-H)	0

AVERAGE ACCIDENT NUMBERS (PIA/DAY)	
MAIN ROUTE WITHOUT WORKS	0.0064
MAIN ROUTE WITH WORKS	0.0049
'DIVERSION'	0.0000

PIA: Personal Injury Accidents

ECONOMIC IMPACT ON ROAD USERS	
ROAD USER COSTS PER DAY	\$1,906
CONGESTED HOURS PER DAY*	0

*Delays Exceeding User-Specified Maximum

**USH 41: STH 15 TO STH 125 (OUTAGAMIE COUNTY)
CONTINUOUS (24 HOUR) CLOSURE
NO DIVERSION ROUTE (MAX QUEUE METHOD)**

OCTOBER

Analyzed for 2009
Construction Season

GRAPHICAL REPRESENTATION OF TRAFFIC MODEL INPUT AND OUTPUT
SUNDAY NORTHBOUND DIRECTION

