

<b>USH 41: STH 15 TO STH 125 (OUTAGAMIE COUNTY)                  CONTINUOUS (24 HOUR) CLOSURE                  NO DIVERSION ROUTE (MAX QUEUE METHOD)</b>	<b>OCTOBER</b>
	Analyzed for 2009 Construction Season

**SUMMARY OF TRAFFIC MODEL OUTPUT**

SATURDAY SOUTHBOUND DIRECTION

TIME OF DAY	FLOWS AND CAPACITY IN VEH/HR						AVERAGE SPEEDS IN MPH			
	MAIN ROUTE		SITE CAPA CITY	FLOW		AV.DEL PER VEH (MINS)	AVERAGE QUEUE (VEH)	MAIN ROUTE		SITE
	DEMAND FLOW	PCT HEAVY		MAIN ROUTE	'DIVER TED'			WITHOUT WORK ZONE	WITH WORK ZONE	
MID-1 AM	317	0.0	3000	317	0	0.36	0	70.2	56.9	49.7
1-2 AM	209	0.0	3000	209	0	0.36	0	70.2	56.9	49.7
2-3 AM	199	0.0	3000	199	0	0.36	0	70.2	56.9	49.7
3-4 AM	140	0.0	3000	140	0	0.36	0	70.2	56.9	49.7
4-5 AM	185	0.0	3000	185	0	0.36	0	70.2	56.9	49.7
5-6 AM	325	0.0	3000	325	0	0.36	0	70.2	56.9	49.7
6-7 AM	584	0.0	3000	584	0	0.36	0	70.0	56.8	49.7
7-8 AM	844	0.0	3000	844	0	0.35	0	69.7	56.8	49.7
8-9 AM	1105	0.0	3000	1105	0	0.35	0	69.4	56.6	49.7
9-10 AM	1330	0.0	3000	1330	0	0.35	0	69.1	56.6	49.7
10-11 AM	1608	0.0	3000	1608	0	0.34	0	68.7	56.5	49.7
11AM-NOON	1798	0.0	3000	1798	0	0.34	0	68.5	56.4	49.7
NOON-1PM	2017	0.0	3000	2017	0	0.33	0	68.2	56.3	49.7
1-2 PM	2002	0.0	3000	2002	0	0.33	0	68.2	56.3	49.7
2-3 PM	2074	0.0	3000	2074	0	0.33	0	68.2	56.3	49.7
3-4 PM	2085	0.0	3000	2085	0	0.33	0	68.1	56.3	49.7
4-5 PM	2126	0.0	3000	2126	0	0.33	0	68.1	56.3	49.7
5-6 PM	1958	0.0	3000	1958	0	0.34	0	68.3	56.3	49.7
6-7 PM	1697	0.0	3000	1697	0	0.34	0	68.6	56.4	49.7
7-8 PM	1488	0.0	3000	1488	0	0.34	0	68.9	56.5	49.7
8-9 PM	1329	0.0	3000	1329	0	0.35	0	69.1	56.6	49.7
9-10 PM	1156	0.0	3000	1156	0	0.35	0	69.3	56.6	49.7
10-11 PM	828	0.0	3000	828	0	0.35	0	69.7	56.8	49.7
11PM-MID	559	0.0	3000	559	0	0.36	0	70.0	56.9	49.7

**\*----- SITE BREAKDOWN DELAYS -----\***

BREAKDOWN DURATION (MINS)	0
RANGE OF QUEUE DELAY - MIN (VEH-H) MAX	0.0
AV BREAKDOWNS PER DAY	0.00
AV QUEUE DELAY/DAY (VEH-H)	0.0
AV TOTAL DELAY/DAY (VEH-H)	0.0

**\*----- SITE ACCIDENT DELAYS -----\***

BREAKDOWN DURATION (MINS)	0
RANGE OF QUEUE DELAY - MIN (VEH-H) MAX	0
AV BREAKDOWNS PER DAY	0
AV QUEUE DELAY/DAY (VEH-H)	0
AV TOTAL DELAY/DAY (VEH-H)	0

**AVERAGE ACCIDENT NUMBERS (PIA/DAY)**

MAIN ROUTE WITHOUT WORKS	0.0080
MAIN ROUTE WITH WORKS	0.0062
'DIVERSION'	0.0000

PIA: Personal Injury Accidents

**IMPACTS ON ROAD USERS**

ROAD USER COSTS PER DAY	\$2,331
CONGESTED HOURS PER DAY*	0

\*Delays Exceeding User-Specified Maximum

**USH 41: STH 15 TO STH 125 (OUTAGAMIE COUNTY)  
CONTINUOUS (24 HOUR) CLOSURE  
NO DIVERSION ROUTE (MAX QUEUE METHOD)**

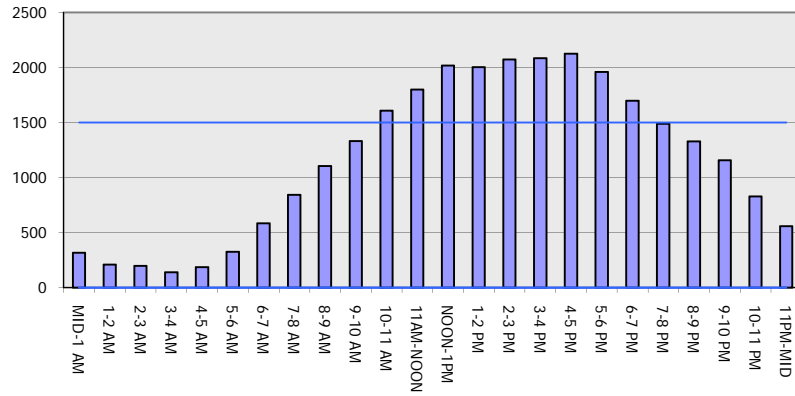
**OCTOBER**

Analyzed for 2009  
Construction Season

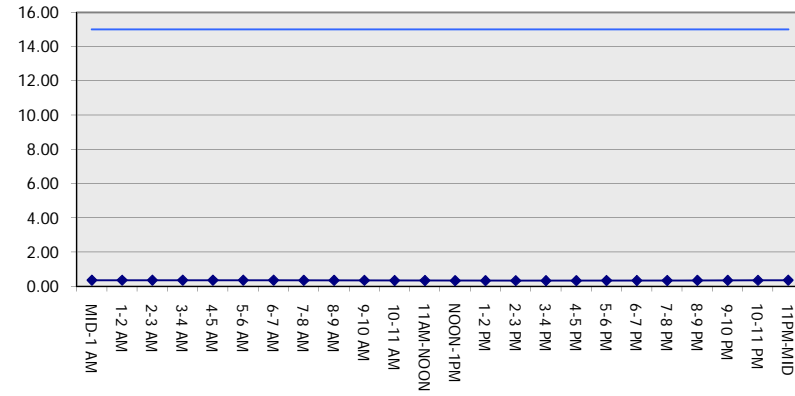
**GRAPHICAL REPRESENTATION OF TRAFFIC MODEL INPUT AND OUTPUT**

**SATURDAY SOUTHBOUND DIRECTION**

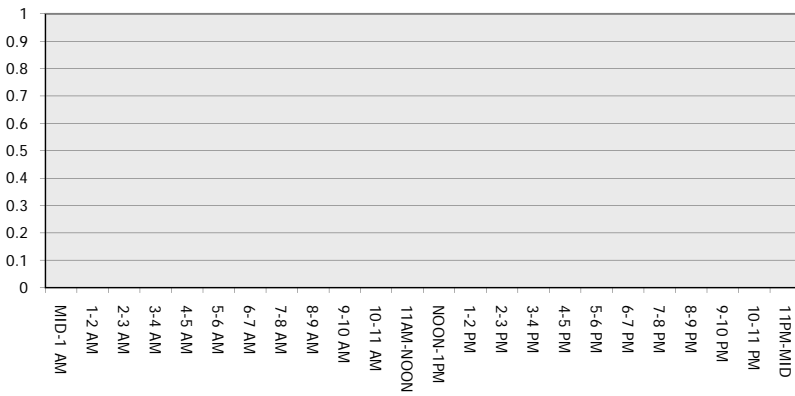
**Main Route - Traffic Demand (Vehicles Per Hour)**



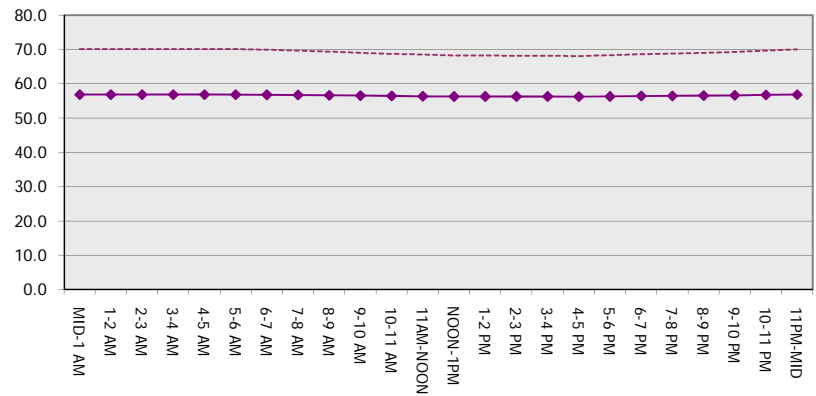
**Main Route Average Delay Per Vehicle (Minutes)**



**Main Route - Average Queue Length (Vehicles)**



**Main Route - Average Speed (MPH)**



<b>USH 41: STH 15 TO STH 125 (OUTAGAMIE COUNTY)                  CONTINUOUS (24 HOUR) CLOSURE                  NO DIVERSION ROUTE (MAX QUEUE METHOD)</b>	<b>OCTOBER</b>
	Analyzed for 2009 Construction Season

**SUMMARY OF TRAFFIC MODEL OUTPUT**

SATURDAY NORTHBOUND DIRECTION

TIME OF DAY	FLOWS AND CAPACITY IN VEH/HR							AVERAGE SPEEDS IN MPH		
	MAIN ROUTE		SITE CAPA CITY	FLOW		AV.DEL PER VEH (MINS)	AVERAGE QUEUE (VEH)	MAIN ROUTE		SITE
	DEMAND FLOW	PCT HEAVY		MAIN ROUTE	'DIVER TED'			WITHOUT WORK ZONE	WITH WORK ZONE	
MID-1 AM	301	0.0	3000	301	0	0.36	0	70.2	56.9	49.7
1-2 AM	172	0.0	3000	172	0	0.36	0	70.2	56.9	49.7
2-3 AM	165	0.0	3000	165	0	0.36	0	70.2	56.9	49.7
3-4 AM	130	0.0	3000	130	0	0.36	0	70.2	56.9	49.7
4-5 AM	185	0.0	3000	185	0	0.36	0	70.2	56.9	49.7
5-6 AM	282	0.0	3000	282	0	0.36	0	70.2	56.9	49.7
6-7 AM	483	0.0	3000	483	0	0.36	0	70.1	56.9	49.7
7-8 AM	915	0.0	3000	915	0	0.35	0	69.6	56.8	49.7
8-9 AM	1321	0.0	3000	1321	0	0.35	0	69.1	56.6	49.7
9-10 AM	1647	0.0	3000	1647	0	0.34	0	68.7	56.4	49.7
10-11 AM	2093	0.0	3000	2093	0	0.33	0	68.1	56.3	49.7
11AM-NOON	2286	0.0	3000	2286	0	0.33	0	67.9	56.3	49.7
NOON-1PM	2314	0.0	3000	2314	0	0.33	0	67.9	56.2	49.7
1-2 PM	2227	0.0	3000	2227	0	0.33	0	67.9	56.3	49.7
2-3 PM	2097	0.0	3000	2097	0	0.33	0	68.1	56.3	49.7
3-4 PM	2018	0.0	3000	2018	0	0.33	0	68.2	56.3	49.7
4-5 PM	1993	0.0	3000	1993	0	0.33	0	68.2	56.3	49.7
5-6 PM	1860	0.0	3000	1860	0	0.34	0	68.4	56.4	49.7
6-7 PM	1629	0.0	3000	1629	0	0.34	0	68.7	56.4	49.7
7-8 PM	1181	0.0	3000	1181	0	0.35	0	69.2	56.6	49.7
8-9 PM	898	0.0	3000	898	0	0.35	0	69.6	56.8	49.7
9-10 PM	735	0.0	3000	735	0	0.35	0	69.8	56.8	49.7
10-11 PM	589	0.0	3000	589	0	0.36	0	70.0	56.8	49.7
11PM-MID	446	0.0	3000	446	0	0.36	0	70.2	56.9	49.7

*----- SITE BREAKDOWN DELAYS -----*	
BREAKDOWN DURATION (MINS)	0
RANGE OF QUEUE DELAY - MIN (VEH-H) MAX	0.0
AV BREAKDOWNS PER DAY	0.00
AV QUEUE DELAY/DAY (VEH-H)	0.0
AV TOTAL DELAY/DAY (VEH-H)	0.0

*----- SITE ACCIDENT DELAYS -----*	
BREAKDOWN DURATION (MINS)	0
RANGE OF QUEUE DELAY - MIN (VEH-H) MAX	0
AV BREAKDOWNS PER DAY	0
AV QUEUE DELAY/DAY (VEH-H)	0
AV TOTAL DELAY/DAY (VEH-H)	0

AVERAGE ACCIDENT NUMBERS (PIA/DAY)	
MAIN ROUTE WITHOUT WORKS	0.0080
MAIN ROUTE WITH WORKS	0.0062
'DIVERSION'	0.0000

PIA: Personal Injury Accidents

ECONOMIC IMPACT ON ROAD USERS	
ROAD USER COSTS PER DAY	\$2,317
CONGESTED HOURS PER DAY*	0

\*Delays Exceeding User-Specified Maximum

**USH 41: STH 15 TO STH 125 (OUTAGAMIE COUNTY)  
CONTINUOUS (24 HOUR) CLOSURE  
NO DIVERSION ROUTE (MAX QUEUE METHOD)**

**OCTOBER**

Analyzed for 2009  
Construction Season

**GRAPHICAL REPRESENTATION OF TRAFFIC MODEL INPUT AND OUTPUT**  
**SATURDAY NORTHBOUND DIRECTION**

