

**USH 41: STH 15 TO STH 125 (OUTAGAMIE COUNTY)
CONTINUOUS (24 HOUR) 2 LANE CLOSURE
NO DIVERSION ROUTE (MAX QUEUE METHOD)**

OCTOBER

Analyzed for 2009
Construction Season

SUMMARY OF TRAFFIC MODEL OUTPUT

MON-THUR SOUTHBOUND DIRECTION

TIME OF DAY	FLOWS AND CAPACITY IN VEH/HR						AVERAGE SPEEDS IN MPH				
	MAIN ROUTE		SITE CAPA CITY	FLOW		AV.DEL PER VEH (MINS)	AVERAGE QUEUE (VEH)	MAIN ROUTE		SITE	
	DEMAND FLOW	PCT HEAVY		MAIN ROUTE	'DIVER TED'			WITHOUT WORK ZONE	WITH WORK ZONE		
MID-1 AM	316	0.0	1500	316	0	0.51	0	70.2	52.7	44.2	
1-2 AM	175	0.0	1500	175	0	0.49	0	70.2	53.2	44.8	
2-3 AM	129	0.0	1500	129	0	0.49	0	70.2	53.3	45.0	
3-4 AM	159	0.0	1500	159	0	0.49	0	70.2	53.2	44.8	
4-5 AM	331	0.0	1500	331	0	0.51	0	70.2	52.7	44.2	
5-6 AM	975	0.0	1499	975	0	0.61	0	69.6	50.0	41.1	
6-7 AM	1802	0.0	1499	1802	0	3.31	93	68.5	22.1	30.8	
7-8 AM	2798	0.0	1499	1542	1256	17.08+	422	67.3	7.2	32.4	
8-9 AM	2031	0.0	1500	1551	481	16.79+	411	68.2	7.3	30.9	
9-10 AM	1600	0.0	1500	1523	77	16.86+	412	68.7	7.2	30.8	
10-11 AM	1665	0.0	1500	1500	165	16.97+	415	68.7	7.2	30.8	
11AM-NOON	1883	0.0	1499	1500	383	16.98+	416	68.4	7.2	30.8	
NOON-1PM	2057	0.0	1499	1500	557	16.98+	416	68.2	7.2	30.8	
1-2 PM	2243	0.0	1499	1500	743	16.99+	416	67.9	7.2	30.8	
2-3 PM	2481	0.0	1499	1500	981	16.99+	417	67.6	7.2	30.8	
3-4 PM	2610	0.0	1500	1501	1109	17.01+	417	67.5	7.2	30.8	
4-5 PM	3071	0.0	1499	1505	1566	17.27+	425	66.9	7.1	30.8	
5-6 PM	2813	0.0	1500	1498	1315	17.12+	420	67.3	7.1	30.8	
6-7 PM	1850	0.0	1500	1500	350	16.98+	416	68.4	7.2	30.8	
7-8 PM	1420	0.0	1499	1413	7	16.04+	391	69.0	7.5	30.8	
8-9 PM	1290	0.0	1499	1290	0	9.88	239	69.1	10.0	31.1	
9-10 PM	1053	0.0	1500	1053	0	1.05	20	69.4	41.5	40.1	
10-11 PM	645	0.0	1500	645	0	0.55	0	69.9	51.6	43.0	
11PM-MID	359	0.0	1500	359	0	0.52	0	70.2	52.5	44.0	

+ INDICATES QUEUEING EXCEEDS USER-SPECIFIED MAXIMUM LIMIT

----- SITE BREAKDOWN DELAYS -----	
BREAKDOWN DURATION (MINS)	0
RANGE OF QUEUE DELAY - MIN (VEH-H) MAX	0.0
AV BREAKDOWNS PER DAY	0.00
AV QUEUE DELAY/DAY (VEH-H)	0.0
AV TOTAL DELAY/DAY (VEH-H)	0.0

----- SITE ACCIDENT DELAYS -----	
BREAKDOWN DURATION (MINS)	0
RANGE OF QUEUE DELAY - MIN (VEH-H) MAX	0
AV BREAKDOWNS PER DAY	0
AV QUEUE DELAY/DAY (VEH-H)	0
AV TOTAL DELAY/DAY (VEH-H)	0

AVERAGE ACCIDENT NUMBERS (PIA/DAY)	
MAIN ROUTE WITHOUT WORKS	0.0103
MAIN ROUTE WITH WORKS	0.0059
'DIVERSION'	0.0060
PIA: Personal Injury Accidents	
IMPACTS ON ROAD USERS	
ROAD USER COSTS PER DAY	\$111,021
CONGESTED HOURS PER DAY*	13

*Delays Exceeding User-Specified Maximum

**USH 41: STH 15 TO STH 125 (OUTAGAMIE COUNTY)
CONTINUOUS (24 HOUR) 2 LANE CLOSURE
NO DIVERSION ROUTE (MAX QUEUE METHOD)**

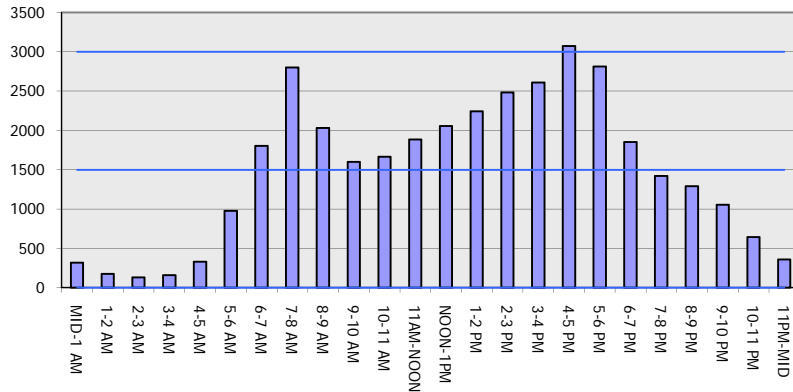
OCTOBER

Analyzed for 2009
Construction Season

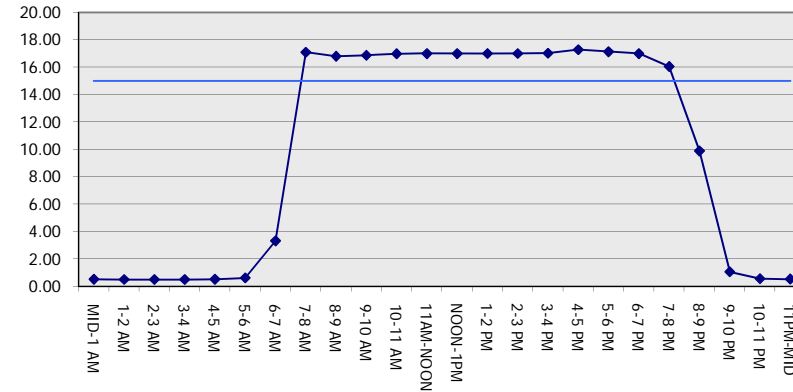
GRAPHICAL REPRESENTATION OF TRAFFIC MODEL INPUT AND OUTPUT

MON-THUR SOUTHBOUND DIRECTION

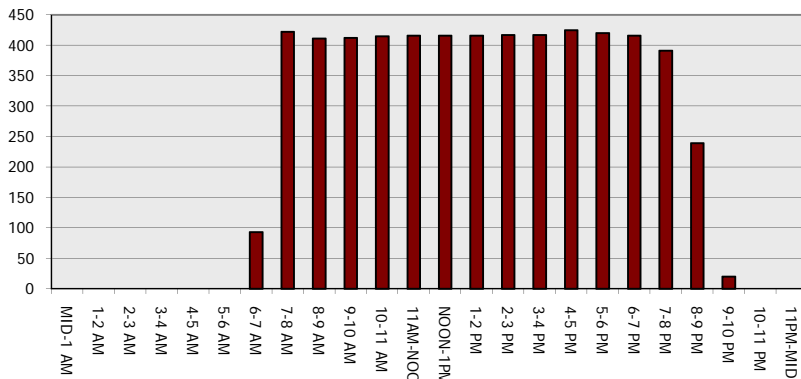
Main Route - Traffic Demand (Vehicles Per Hour)



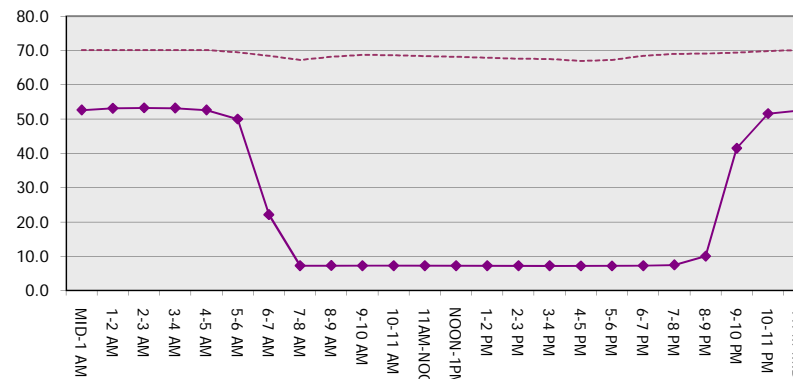
Main Route Average Delay Per Vehicle (Minutes)



Main Route - Average Queue Length (Vehicles)



Main Route - Average Speed (MPH)



USH 41: STH 15 TO STH 125 (OUTAGAMIE COUNTY) CONTINUOUS (24 HOUR) 2 LANE CLOSURE NO DIVERSION ROUTE (MAX QUEUE METHOD)	OCTOBER
	Analyzed for 2009 Construction Season

SUMMARY OF TRAFFIC MODEL OUTPUT

MON-THUR NORTHBOUND DIRECTION

TIME OF DAY	FLOWS AND CAPACITY IN VEH/HR							AVERAGE SPEEDS IN MPH		
	MAIN ROUTE		SITE CAPA CITY	FLOW		AV.DEL PER VEH (MINS)	AVERAGE QUEUE (VEH)	MAIN ROUTE		SITE
	DEMAND FLOW	PCT HEAVY		MAIN ROUTE	'DIVER TED'			WITHOUT WORK ZONE	WITH WORK ZONE	
MID-1 AM	163	0.0	1500	163	0	0.49	0	70.2	53.2	44.8
1-2 AM	128	0.0	1500	128	0	0.49	0	70.2	53.3	45.0
2-3 AM	110	0.0	1500	110	0	0.49	0	70.2	53.3	45.0
3-4 AM	138	0.0	1500	138	0	0.49	0	70.2	53.3	45.0
4-5 AM	295	0.0	1500	295	0	0.51	0	70.2	52.7	44.3
5-6 AM	859	0.0	1500	859	0	0.57	0	69.7	50.9	42.2
6-7 AM	1644	0.0	1499	1644	0	2.05	47	68.7	29.8	31.8
7-8 AM	2749	0.0	1500	1783	965	16.18+	400	67.3	7.4	30.8
8-9 AM	2171	0.0	1499	1494	678	16.99+	416	68.1	7.2	30.8
9-10 AM	1810	0.0	1499	1464	345	16.86+	413	68.5	7.2	30.8
10-11 AM	1833	0.0	1499	1499	335	16.98+	416	68.4	7.2	30.8
11AM-NOON	2023	0.0	1499	1499	524	16.98+	416	68.2	7.2	30.8
NOON-1PM	2037	0.0	1499	1499	538	16.98+	416	68.2	7.2	30.8
1-2 PM	2019	0.0	1499	1499	520	16.98+	416	68.2	7.2	30.8
2-3 PM	2193	0.0	1499	1499	694	16.99+	416	68.0	7.2	30.8
3-4 PM	2724	0.0	1499	1497	1227	17.07+	419	67.4	7.1	30.8
4-5 PM	3202	0.0	1499	1500	1702	17.33+	426	66.8	7.1	30.8
5-6 PM	2879	0.0	1500	1499	1381	17.16+	421	67.1	7.1	30.8
6-7 PM	1822	0.0	1500	1499	323	16.98+	416	68.5	7.2	30.8
7-8 PM	1076	0.0	1499	1076	0	7.91	240	69.4	12.4	35.3
8-9 PM	820	0.0	1500	820	0	0.57	0	69.7	51.0	42.3
9-10 PM	651	0.0	1500	651	0	0.55	0	69.9	51.6	42.9
10-11 PM	509	0.0	1500	509	0	0.53	0	70.1	52.0	43.5
11PM-MID	316	0.0	1500	316	0	0.51	0	70.2	52.7	44.2

+ INDICATES QUEUEING EXCEEDS USER-SPECIFIED MAXIMUM LIMIT

----- SITE BREAKDOWN DELAYS -----	
BREAKDOWN DURATION (MINS)	0
RANGE OF QUEUE DELAY - MIN (VEH-H) MAX	0.0
AV BREAKDOWNS PER DAY	0.00
AV QUEUE DELAY/DAY (VEH-H)	0.0
AV TOTAL DELAY/DAY (VEH-H)	0.0

----- SITE ACCIDENT DELAYS -----	
BREAKDOWN DURATION (MINS)	0
RANGE OF QUEUE DELAY - MIN (VEH-H) MAX	0
AV BREAKDOWNS PER DAY	0
AV QUEUE DELAY/DAY (VEH-H)	0
AV TOTAL DELAY/DAY (VEH-H)	0

AVERAGE ACCIDENT NUMBERS (PIA/DAY)	
MAIN ROUTE WITHOUT WORKS	0.0098
MAIN ROUTE WITH WORKS	0.0055
'DIVERSION'	0.0061

PIA: Personal Injury Accidents

ECONOMIC IMPACT ON ROAD USERS	
ROAD USER COSTS PER DAY	\$105,374
CONGESTED HOURS PER DAY*	12

*Delays Exceeding User-Specified Maximum

**USH 41: STH 15 TO STH 125 (OUTAGAMIE COUNTY)
CONTINUOUS (24 HOUR) 2 LANE CLOSURE
NO DIVERSION ROUTE (MAX QUEUE METHOD)**

OCTOBER

Analyzed for 2009
Construction Season

GRAPHICAL REPRESENTATION OF TRAFFIC MODEL INPUT AND OUTPUT
MON-THUR NORTHBOUND DIRECTION

