

USH 41: STH 15 TO STH 125 (OUTAGAMIE COUNTY) CONTINUOUS (24 HOUR) CLOSURE NO DIVERSION ROUTE (MAX QUEUE METHOD)	OCTOBER
	Analyzed for 2009 Construction Season

SUMMARY OF TRAFFIC MODEL OUTPUT

FRIDAY SOUTHBOUND DIRECTION

TIME OF DAY	FLOWS AND CAPACITY IN VEH/HR						AVERAGE SPEEDS IN MPH				
	MAIN ROUTE		SITE CAPA CITY	FLOW		AV.DEL PER VEH (MINS)	AVERAGE QUEUE (VEH)	MAIN ROUTE		SITE	
	DEMAND FLOW	PCT HEAVY		MAIN ROUTE	'DIVER TED'			WITHOUT WORK ZONE	WITH WORK ZONE		
MID-1 AM	261	0.0	3000	261	0	0.36	0	70.2	56.9	49.7	
1-2 AM	166	0.0	3000	166	0	0.36	0	70.2	56.9	49.7	
2-3 AM	170	0.0	3000	170	0	0.36	0	70.2	56.9	49.7	
3-4 AM	150	0.0	3000	150	0	0.36	0	70.2	56.9	49.7	
4-5 AM	325	0.0	3000	325	0	0.36	0	70.2	56.9	49.7	
5-6 AM	871	0.0	3000	871	0	0.35	0	69.7	56.8	49.7	
6-7 AM	1659	0.0	3000	1659	0	0.34	0	68.7	56.4	49.7	
7-8 AM	2521	0.0	3000	2521	0	0.42	0	67.6	53.7	46.3	
8-9 AM	1927	0.0	3000	1927	0	0.34	0	68.3	56.4	49.7	
9-10 AM	1648	0.0	3000	1648	0	0.34	0	68.7	56.4	49.7	
10-11 AM	1866	0.0	3000	1866	0	0.34	0	68.4	56.4	49.7	
11AM-NOON	2174	0.0	3000	2174	0	0.33	0	68.1	56.3	49.7	
NOON-1PM	2434	0.0	3000	2434	0	0.36	0	67.7	55.3	48.4	
1-2 PM	2792	0.0	3000	2792	0	0.59	0	67.3	49.1	40.7	
2-3 PM	2782	0.0	2999	2782	0	0.59	0	67.3	49.3	40.9	
3-4 PM	2985	0.0	2999	2985	0	0.81	6	67.0	44.7	37.9	
4-5 PM	3290	0.0	3000	3290	0	3.50	170	66.6	21.5	37.3	
5-6 PM	2947	0.0	2999	2947	0	6.62	324	67.1	14.8	37.3	
6-7 PM	2113	0.0	3000	2113	0	0.81	47	68.1	45.2	48.6	
7-8 PM	1585	0.0	3000	1585	0	0.34	0	68.7	56.5	49.7	
8-9 PM	1461	0.0	3000	1461	0	0.34	0	68.9	56.5	49.7	
9-10 PM	1310	0.0	3000	1310	0	0.35	0	69.1	56.6	49.7	
10-11 PM	845	0.0	3000	845	0	0.35	0	69.7	56.8	49.7	
11PM-MID	545	0.0	3000	545	0	0.36	0	70.0	56.9	49.7	

----- SITE BREAKDOWN DELAYS -----	
BREAKDOWN DURATION (MINS)	0
RANGE OF QUEUE DELAY - MIN (VEH-H) MAX	0.0
AV BREAKDOWNS PER DAY	0.00
AV QUEUE DELAY/DAY (VEH-H)	0.0
AV TOTAL DELAY/DAY (VEH-H)	0.0

----- SITE ACCIDENT DELAYS -----	
BREAKDOWN DURATION (MINS)	0
RANGE OF QUEUE DELAY - MIN (VEH-H) MAX	0
AV BREAKDOWNS PER DAY	0
AV QUEUE DELAY/DAY (VEH-H)	0
AV TOTAL DELAY/DAY (VEH-H)	0

AVERAGE ACCIDENT NUMBERS (PIA/DAY)	
MAIN ROUTE WITHOUT WORKS	0.0111
MAIN ROUTE WITH WORKS	0.0086
'DIVERSION'	0.0000
PIA: Personal Injury Accidents	
IMPACTS ON ROAD USERS	
ROAD USER COSTS PER DAY	\$10,357
CONGESTED HOURS PER DAY*	0

*Delays Exceeding User-Specified Maximum

**USH 41: STH 15 TO STH 125 (OUTAGAMIE COUNTY)
CONTINUOUS (24 HOUR) CLOSURE
NO DIVERSION ROUTE (MAX QUEUE METHOD)**

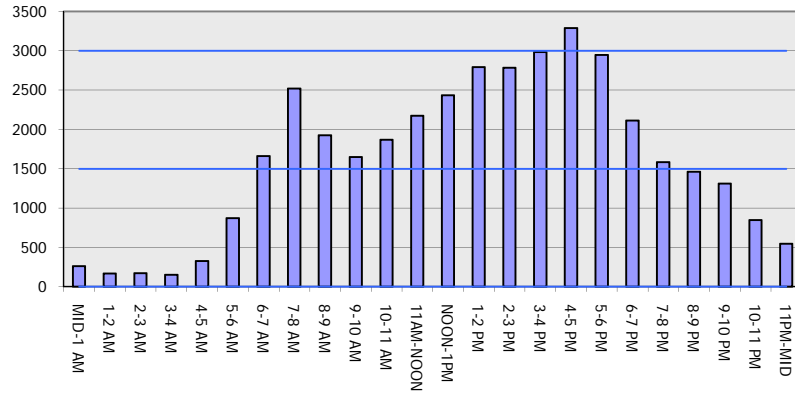
OCTOBER

Analyzed for 2009
Construction Season

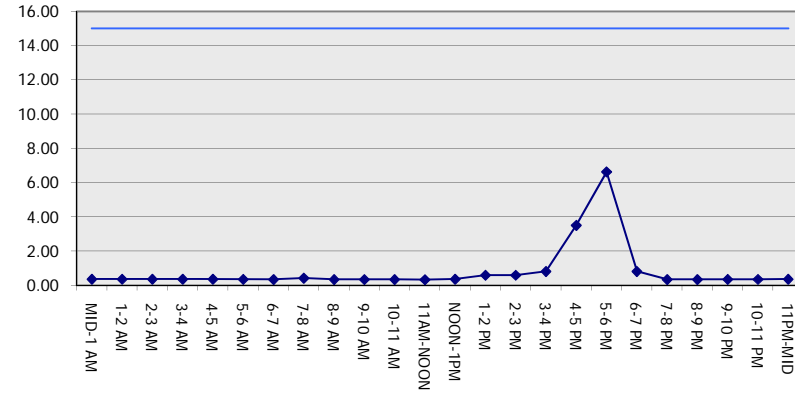
GRAPHICAL REPRESENTATION OF TRAFFIC MODEL INPUT AND OUTPUT

FRIDAY SOUTHBOUND DIRECTION

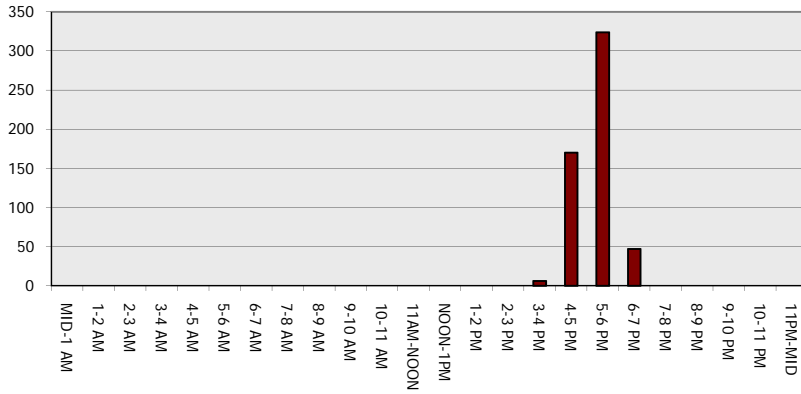
Main Route - Traffic Demand (Vehicles Per Hour)



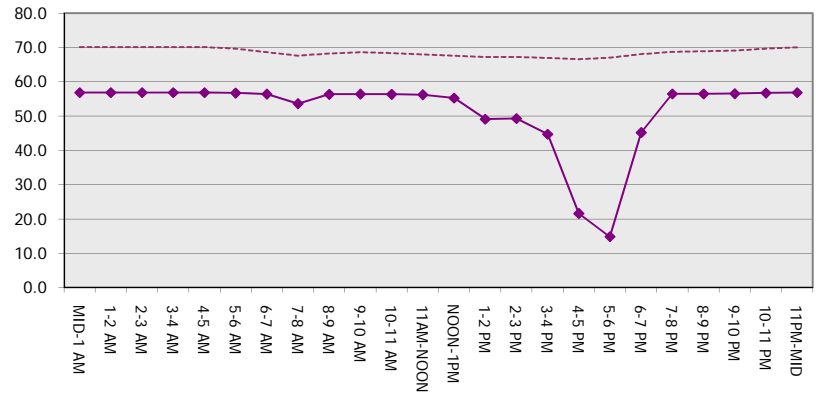
Main Route Average Delay Per Vehicle (Minutes)



Main Route - Average Queue Length (Vehicles)



Main Route - Average Speed (MPH)



USH 41: STH 15 TO STH 125 (OUTAGAMIE COUNTY) CONTINUOUS (24 HOUR) CLOSURE NO DIVERSION ROUTE (MAX QUEUE METHOD)	OCTOBER
	Analyzed for 2009 Construction Season

SUMMARY OF TRAFFIC MODEL OUTPUT

FRIDAY NORTHBOUND DIRECTION

TIME OF DAY	FLOWS AND CAPACITY IN VEH/HR							AVERAGE SPEEDS IN MPH		
	MAIN ROUTE		SITE CAPA CITY	FLOW		AV.DEL PER VEH (MINS)	AVERAGE QUEUE (VEH)	MAIN ROUTE		SITE
	DEMAND FLOW	PCT HEAVY		MAIN ROUTE	'DIVER TED'			WITHOUT WORK ZONE	WITH WORK ZONE	
MID-1 AM	207	0.0	3000	207	0	0.36	0	70.2	56.9	49.7
1-2 AM	168	0.0	3000	168	0	0.36	0	70.2	56.9	49.7
2-3 AM	160	0.0	3000	160	0	0.36	0	70.2	56.9	49.7
3-4 AM	173	0.0	3000	173	0	0.36	0	70.2	56.9	49.7
4-5 AM	366	0.0	3000	366	0	0.36	0	70.2	56.9	49.7
5-6 AM	720	0.0	3000	720	0	0.36	0	69.9	56.8	49.7
6-7 AM	1513	0.0	3000	1513	0	0.34	0	68.9	56.5	49.7
7-8 AM	2624	0.0	3000	2624	0	0.48	0	67.5	51.9	44.0
8-9 AM	2152	0.0	3000	2152	0	0.33	0	68.1	56.3	49.7
9-10 AM	1955	0.0	3000	1955	0	0.34	0	68.3	56.4	49.7
10-11 AM	2172	0.0	3000	2172	0	0.33	0	68.1	56.3	49.7
11AM-NOON	2460	0.0	3000	2460	0	0.38	0	67.7	54.8	47.8
NOON-1PM	2487	0.0	3000	2487	0	0.39	0	67.6	54.3	47.1
1-2 PM	2541	0.0	3000	2541	0	0.43	0	67.6	53.3	45.8
2-3 PM	2757	0.0	2999	2757	0	0.57	0	67.3	49.7	41.4
3-4 PM	3150	0.0	2999	3150	0	1.54	52	66.8	34.2	37.3
4-5 PM	3465	0.0	3000	3465	0	7.30	383	66.4	14.3	37.3
5-6 PM	3125	0.0	2999	3125	0	13.57+	708	66.8	10.7	37.3
6-7 PM	2481	0.0	2999	2481	0	9.88	530	67.6	12.4	39.1
7-8 PM	1561	0.0	3000	1561	0	0.52	19	68.8	51.7	49.7
8-9 PM	1068	0.0	3000	1068	0	0.35	0	69.4	56.7	49.7
9-10 PM	896	0.0	3000	896	0	0.35	0	69.6	56.8	49.7
10-11 PM	700	0.0	3000	700	0	0.36	0	69.9	56.8	49.7
11PM-MID	477	0.0	3000	477	0	0.36	0	70.1	56.9	49.7

+ INDICATES QUEUEING EXCEEDS USER-SPECIFIED MAXIMUM LIMIT

----- SITE BREAKDOWN DELAYS -----	
BREAKDOWN DURATION (MINS)	0
RANGE OF QUEUE DELAY - MIN (VEH-H) MAX	0.0
AV BREAKDOWNS PER DAY	0.00
AV QUEUE DELAY/DAY (VEH-H)	0.0
AV TOTAL DELAY/DAY (VEH-H)	0.0

----- SITE ACCIDENT DELAYS -----	
BREAKDOWN DURATION (MINS)	0
RANGE OF QUEUE DELAY - MIN (VEH-H) MAX	0
AV BREAKDOWNS PER DAY	0
AV QUEUE DELAY/DAY (VEH-H)	0
AV TOTAL DELAY/DAY (VEH-H)	0

AVERAGE ACCIDENT NUMBERS (PIA/DAY)	
MAIN ROUTE WITHOUT WORKS	0.0113
MAIN ROUTE WITH WORKS	0.0087
'DIVERSION'	0.0000

PIA: Personal Injury Accidents

ECONOMIC IMPACT ON ROAD USERS	
ROAD USER COSTS PER DAY	\$24,234
CONGESTED HOURS PER DAY*	1

*Delays Exceeding User-Specified Maximum

**USH 41: STH 15 TO STH 125 (OUTAGAMIE COUNTY)
CONTINUOUS (24 HOUR) CLOSURE
NO DIVERSION ROUTE (MAX QUEUE METHOD)**

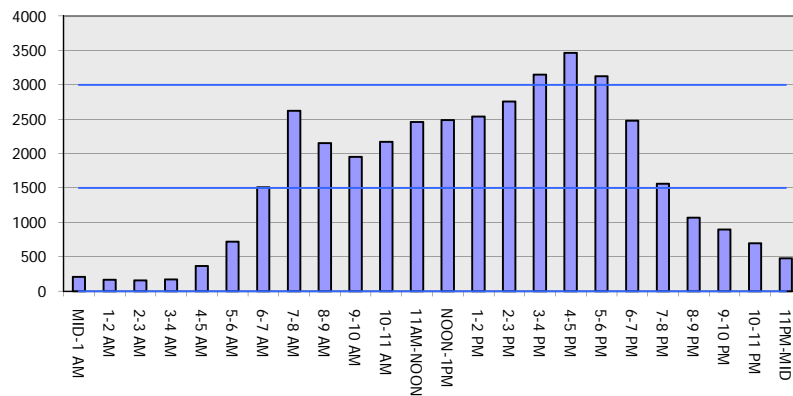
OCTOBER

Analyzed for 2009
Construction Season

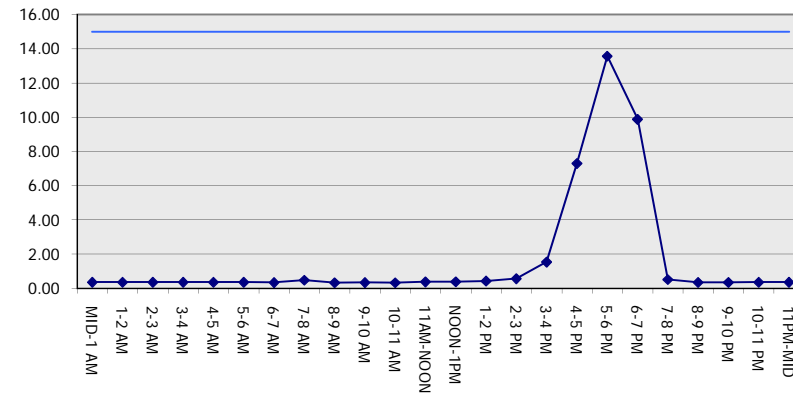
GRAPHICAL REPRESENTATION OF TRAFFIC MODEL INPUT AND OUTPUT

FRIDAY NORTHBOUND DIRECTION

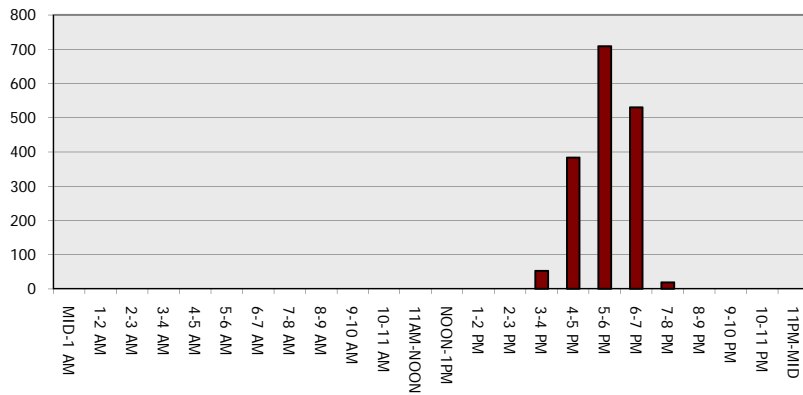
Main Route - Traffic Demand (Vehicles Per Hour)



Main Route Average Delay Per Vehicle (Minutes)



Main Route - Average Queue Length (Vehicles)



Main Route - Average Speed (MPH)

