

USH 41: STH 15 TO STH 125 (OUTAGAMIE COUNTY) CONTINUOUS (24 HOUR) CLOSURE NO DIVERSION ROUTE (MAX QUEUE METHOD)	AUGUST
	Analyzed for 2009 Construction Season

SUMMARY OF TRAFFIC MODEL OUTPUT

SUNDAY SOUTHBOUND DIRECTION

TIME OF DAY	FLOWS AND CAPACITY IN VEH/HR						AVERAGE SPEEDS IN MPH			
	MAIN ROUTE		SITE CAPA CITY	FLOW		AV.DEL PER VEH (MINS)	AVERAGE QUEUE (VEH)	MAIN ROUTE		SITE
	DEMAND FLOW	PCT HEAVY		MAIN ROUTE	'DIVER TED'			WITHOUT WORK ZONE	WITH WORK ZONE	
MID-1 AM	654	0.0	3000	654	0	0.36	0	69.9	56.8	49.7
1-2 AM	261	0.0	3000	261	0	0.36	0	70.2	56.9	49.7
2-3 AM	226	0.0	3000	226	0	0.36	0	70.2	56.9	49.7
3-4 AM	133	0.0	3000	133	0	0.36	0	70.2	56.9	49.7
4-5 AM	132	0.0	3000	132	0	0.36	0	70.2	56.9	49.7
5-6 AM	195	0.0	3000	195	0	0.36	0	70.2	56.9	49.7
6-7 AM	314	0.0	3000	314	0	0.36	0	70.2	56.9	49.7
7-8 AM	444	0.0	3000	444	0	0.36	0	70.2	56.9	49.7
8-9 AM	792	0.0	3000	792	0	0.35	0	69.7	56.8	49.7
9-10 AM	1175	0.0	3000	1175	0	0.35	0	69.3	56.6	49.7
10-11 AM	1657	0.0	3000	1657	0	0.34	0	68.7	56.4	49.7
11AM-NOON	2037	0.0	3000	2037	0	0.33	0	68.2	56.3	49.7
NOON-1PM	2260	0.0	3000	2260	0	0.33	0	67.9	56.3	49.7
1-2 PM	2310	0.0	3000	2310	0	0.33	0	67.9	56.2	49.7
2-3 PM	2389	0.0	3000	2389	0	0.33	0	67.8	56.1	49.6
3-4 PM	2500	0.0	3000	2500	0	0.40	0	67.6	54.0	46.8
4-5 PM	2332	0.0	3000	2332	0	0.33	0	67.8	56.2	49.7
5-6 PM	2124	0.0	3000	2124	0	0.33	0	68.1	56.3	49.7
6-7 PM	1733	0.0	3000	1733	0	0.34	0	68.6	56.4	49.7
7-8 PM	1389	0.0	3000	1389	0	0.34	0	69.0	56.6	49.7
8-9 PM	998	0.0	3000	998	0	0.35	0	69.5	56.7	49.7
9-10 PM	746	0.0	3000	746	0	0.35	0	69.8	56.8	49.7
10-11 PM	486	0.0	3000	486	0	0.36	0	70.1	56.9	49.7
11PM-MID	303	0.0	3000	303	0	0.36	0	70.2	56.9	49.7

----- SITE BREAKDOWN DELAYS -----

BREAKDOWN DURATION (MINS)	0
RANGE OF QUEUE DELAY - MIN (VEH-H) MAX	0.0
AV BREAKDOWNS PER DAY	0.00
AV QUEUE DELAY/DAY (VEH-H)	0.0
AV TOTAL DELAY/DAY (VEH-H)	0.0

----- SITE ACCIDENT DELAYS -----

BREAKDOWN DURATION (MINS)	0
RANGE OF QUEUE DELAY - MIN (VEH-H) MAX	0
AV BREAKDOWNS PER DAY	0
AV QUEUE DELAY/DAY (VEH-H)	0
AV TOTAL DELAY/DAY (VEH-H)	0

AVERAGE ACCIDENT NUMBERS (PIA/DAY)

MAIN ROUTE WITHOUT WORKS	0.0079
MAIN ROUTE WITH WORKS	0.0061
'DIVERSION'	0.0000

PIA: Personal Injury Accidents

IMPACTS ON ROAD USERS

ROAD USER COSTS PER DAY	\$2,355
CONGESTED HOURS PER DAY*	0

*Delays Exceeding User-Specified Maximum

**USH 41: STH 15 TO STH 125 (OUTAGAMIE COUNTY)
CONTINUOUS (24 HOUR) CLOSURE
NO DIVERSION ROUTE (MAX QUEUE METHOD)**

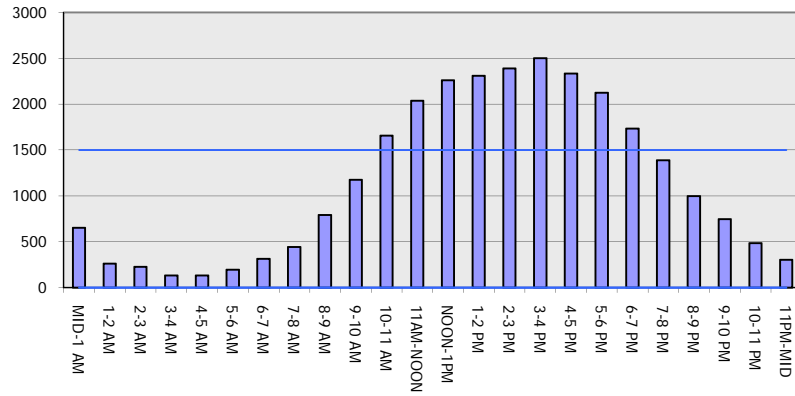
AUGUST

Analyzed for 2009
Construction Season

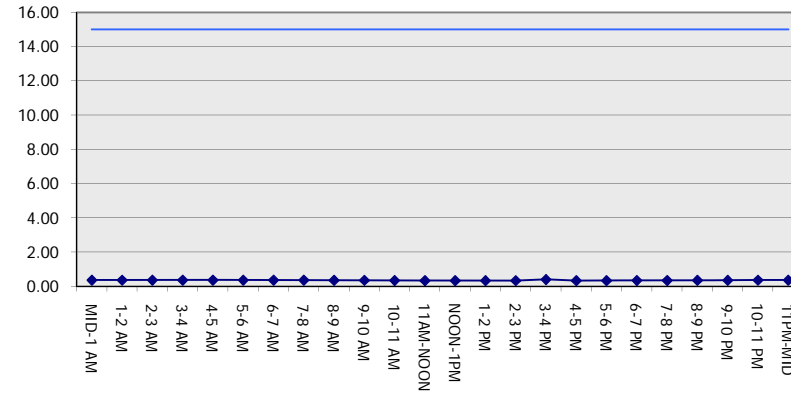
GRAPHICAL REPRESENTATION OF TRAFFIC MODEL INPUT AND OUTPUT

SUNDAY SOUTHBOUND DIRECTION

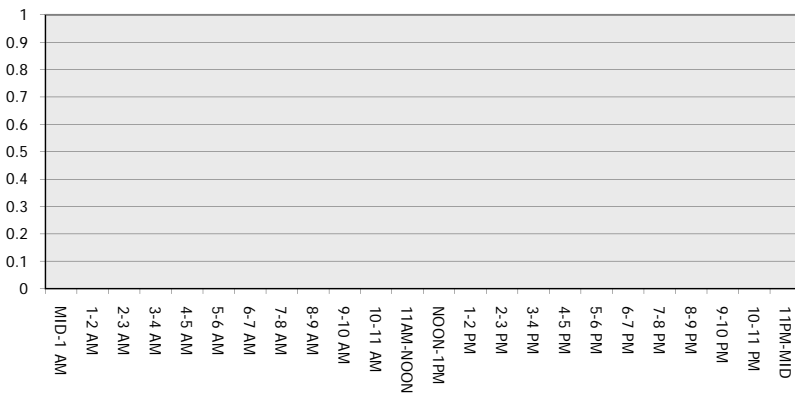
Main Route - Traffic Demand (Vehicles Per Hour)



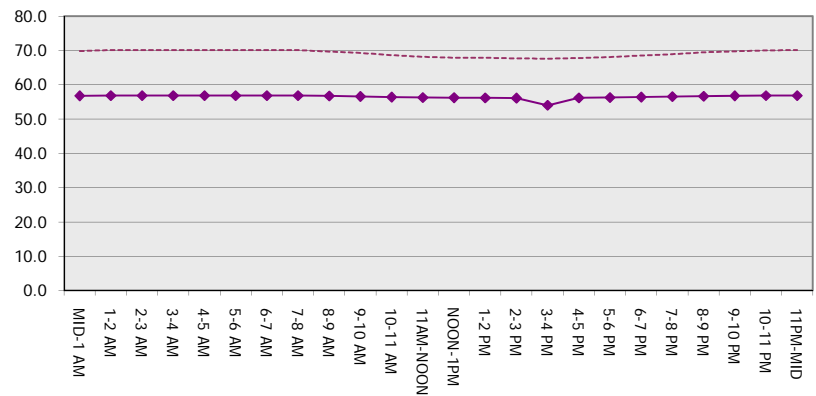
Main Route Average Delay Per Vehicle (Minutes)



Main Route - Average Queue Length (Vehicles)



Main Route - Average Speed (MPH)



USH 41: STH 15 TO STH 125 (OUTAGAMIE COUNTY) CONTINUOUS (24 HOUR) CLOSURE NO DIVERSION ROUTE (MAX QUEUE METHOD)	AUGUST
	Analyzed for 2009 Construction Season

SUMMARY OF TRAFFIC MODEL OUTPUT

SUNDAY NORTHBOUND DIRECTION

TIME OF DAY	FLOWS AND CAPACITY IN VEH/HR							AVERAGE SPEEDS IN MPH		
	MAIN ROUTE		SITE CAPA CITY	FLOW		AV.DEL PER VEH (MINS)	AVERAGE QUEUE (VEH)	MAIN ROUTE		SITE
	DEMAND FLOW	PCT HEAVY		MAIN ROUTE	'DIVER TED'			WITHOUT WORK ZONE	WITH WORK ZONE	
MID-1 AM	270	0.0	3000	270	0	0.36	0	70.2	56.9	49.7
1-2 AM	171	0.0	3000	171	0	0.36	0	70.2	56.9	49.7
2-3 AM	146	0.0	3000	146	0	0.36	0	70.2	56.9	49.7
3-4 AM	89	0.0	3000	89	0	0.36	0	70.2	56.9	49.7
4-5 AM	89	0.0	3000	89	0	0.36	0	70.2	56.9	49.7
5-6 AM	174	0.0	3000	174	0	0.36	0	70.2	56.9	49.7
6-7 AM	248	0.0	3000	248	0	0.36	0	70.2	56.9	49.7
7-8 AM	363	0.0	3000	363	0	0.36	0	70.2	56.9	49.7
8-9 AM	545	0.0	3000	545	0	0.36	0	70.0	56.9	49.7
9-10 AM	987	0.0	3000	987	0	0.35	0	69.5	56.7	49.7
10-11 AM	1520	0.0	3000	1520	0	0.34	0	68.9	56.5	49.7
11AM-NOON	1854	0.0	3000	1854	0	0.34	0	68.4	56.4	49.7
NOON-1PM	2003	0.0	3000	2003	0	0.33	0	68.2	56.3	49.7
1-2 PM	1918	0.0	3000	1918	0	0.34	0	68.4	56.4	49.7
2-3 PM	1859	0.0	3000	1859	0	0.34	0	68.4	56.4	49.7
3-4 PM	1752	0.0	3000	1752	0	0.34	0	68.6	56.4	49.7
4-5 PM	1682	0.0	3000	1682	0	0.34	0	68.6	56.4	49.7
5-6 PM	1496	0.0	3000	1496	0	0.34	0	68.9	56.5	49.7
6-7 PM	1296	0.0	3000	1296	0	0.35	0	69.1	56.6	49.7
7-8 PM	995	0.0	3000	995	0	0.35	0	69.5	56.7	49.7
8-9 PM	879	0.0	3000	879	0	0.35	0	69.6	56.8	49.7
9-10 PM	673	0.0	3000	673	0	0.36	0	69.9	56.8	49.7
10-11 PM	457	0.0	3000	457	0	0.36	0	70.2	56.9	49.7
11PM-MID	270	0.0	3000	270	0	0.36	0	70.2	56.9	49.7

----- SITE BREAKDOWN DELAYS -----	
BREAKDOWN DURATION (MINS)	0
RANGE OF QUEUE DELAY - MIN (VEH-H) MAX	0.0
AV BREAKDOWNS PER DAY	0.00
AV QUEUE DELAY/DAY (VEH-H)	0.0
AV TOTAL DELAY/DAY (VEH-H)	0.0

----- SITE ACCIDENT DELAYS -----	
BREAKDOWN DURATION (MINS)	0
RANGE OF QUEUE DELAY - MIN (VEH-H) MAX	0
AV BREAKDOWNS PER DAY	0
AV QUEUE DELAY/DAY (VEH-H)	0
AV TOTAL DELAY/DAY (VEH-H)	0

AVERAGE ACCIDENT NUMBERS (PIA/DAY)	
MAIN ROUTE WITHOUT WORKS	0.0062
MAIN ROUTE WITH WORKS	0.0048
'DIVERSION'	0.0000

PIA: Personal Injury Accidents

ECONOMIC IMPACT ON ROAD USERS	
ROAD USER COSTS PER DAY	\$1,855
CONGESTED HOURS PER DAY*	0

*Delays Exceeding User-Specified Maximum

**USH 41: STH 15 TO STH 125 (OUTAGAMIE COUNTY)
CONTINUOUS (24 HOUR) CLOSURE
NO DIVERSION ROUTE (MAX QUEUE METHOD)**

AUGUST

Analyzed for 2009
Construction Season

GRAPHICAL REPRESENTATION OF TRAFFIC MODEL INPUT AND OUTPUT
SUNDAY NORTHBOUND DIRECTION

