

**USH 41: STH 15 TO STH 125 (OUTAGAMIE COUNTY)
CONTINUOUS (24 HOUR) 2 LANE CLOSURE
NO DIVERSION ROUTE (MAX QUEUE METHOD)**

AUGUST

Analyzed for 2009
Construction Season

SUMMARY OF TRAFFIC MODEL OUTPUT

SATURDAY SOUTHBOUND DIRECTION

TIME OF DAY	FLOWS AND CAPACITY IN VEH/HR						AVERAGE SPEEDS IN MPH				
	MAIN ROUTE		SITE CAPA CITY	FLOW		AV.DEL PER VEH (MINS)	AVERAGE QUEUE (VEH)	MAIN ROUTE		SITE	
	DEMAND FLOW	PCT HEAVY		MAIN ROUTE	'DIVER TED'			WITHOUT WORK ZONE	WITH WORK ZONE		
MID-1 AM	334	0.0	1500	334	0	0.51	0	70.2	52.7	44.2	
1-2 AM	220	0.0	1500	220	0	0.50	0	70.2	53.0	44.6	
2-3 AM	204	0.0	1500	204	0	0.50	0	70.2	53.0	44.6	
3-4 AM	146	0.0	1500	146	0	0.49	0	70.2	53.2	44.9	
4-5 AM	200	0.0	1500	200	0	0.50	0	70.2	53.0	44.7	
5-6 AM	336	0.0	1500	336	0	0.51	0	70.2	52.6	44.2	
6-7 AM	517	0.0	1500	517	0	0.53	0	70.1	52.0	43.5	
7-8 AM	751	0.0	1500	751	0	0.56	0	69.8	51.2	42.5	
8-9 AM	1085	0.0	1500	1085	0	0.60	0	69.4	50.2	41.4	
9-10 AM	1399	0.0	1499	1399	0	0.96	0	69.0	42.7	33.1	
10-11 AM	1724	0.0	1499	1724	0	4.01	95	68.6	19.4	30.8	
11AM-NOON	1917	0.0	1500	1691	226	14.92+	367	68.4	7.8	30.8	
NOON-1PM	2007	0.0	1500	1500	507	16.98+	416	68.2	7.2	30.8	
1-2 PM	2023	0.0	1500	1500	523	16.98+	416	68.2	7.2	30.8	
2-3 PM	2008	0.0	1500	1500	508	16.98+	416	68.2	7.2	30.8	
3-4 PM	1988	0.0	1500	1500	488	16.98+	416	68.2	7.2	30.8	
4-5 PM	1954	0.0	1500	1500	454	16.98+	416	68.3	7.2	30.8	
5-6 PM	1778	0.0	1500	1500	278	16.98+	415	68.5	7.2	30.8	
6-7 PM	1452	0.0	1500	1445	7	16.44+	401	68.9	7.3	30.8	
7-8 PM	1282	0.0	1499	1282	0	10.67	259	69.1	9.5	31.0	
8-9 PM	1197	0.0	1500	1197	0	1.52	35	69.2	35.1	36.9	
9-10 PM	1175	0.0	1500	1175	0	0.67	0	69.3	48.4	39.3	
10-11 PM	1246	0.0	1500	1246	0	0.77	0	69.2	46.4	37.1	
11PM-MID	1220	0.0	1500	1220	0	0.73	0	69.2	47.1	37.8	

+ INDICATES QUEUEING EXCEEDS USER-SPECIFIED MAXIMUM LIMIT

----- SITE BREAKDOWN DELAYS -----	
BREAKDOWN DURATION (MINS)	0
RANGE OF QUEUE DELAY - MIN (VEH-H) MAX	0.0
AV BREAKDOWNS PER DAY	0.00
AV QUEUE DELAY/DAY (VEH-H)	0.0
AV TOTAL DELAY/DAY (VEH-H)	0.0

----- SITE ACCIDENT DELAYS -----	
BREAKDOWN DURATION (MINS)	0
RANGE OF QUEUE DELAY - MIN (VEH-H) MAX	0
AV BREAKDOWNS PER DAY	0
AV QUEUE DELAY/DAY (VEH-H)	0
AV TOTAL DELAY/DAY (VEH-H)	0

AVERAGE ACCIDENT NUMBERS (PIA/DAY)	
MAIN ROUTE WITHOUT WORKS	0.0081
MAIN ROUTE WITH WORKS	0.0056
'DIVERSION'	0.0020
PIA: Personal Injury Accidents	
IMPACTS ON ROAD USERS	
ROAD USER COSTS PER DAY	\$78,556
CONGESTED HOURS PER DAY*	8

*Delays Exceeding User-Specified Maximum

**USH 41: STH 15 TO STH 125 (OUTAGAMIE COUNTY)
 CONTINUOUS (24 HOUR) 2 LANE CLOSURE
 NO DIVERSION ROUTE (MAX QUEUE METHOD)**

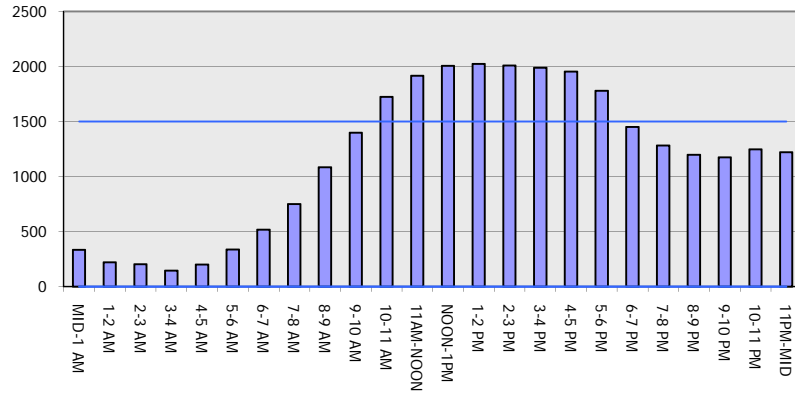
AUGUST

Analyzed for 2009
 Construction Season

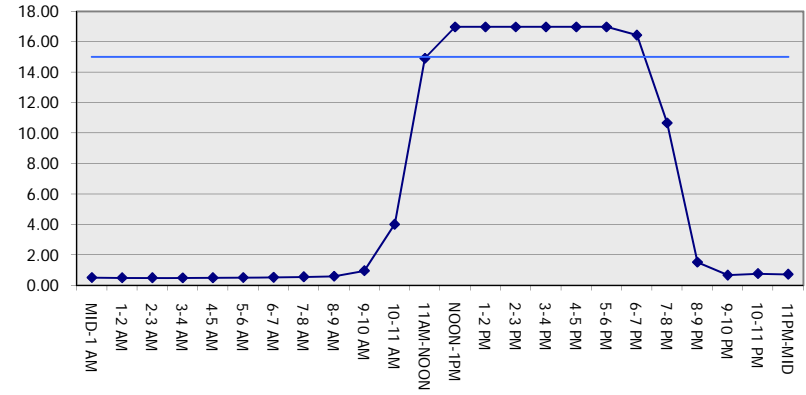
GRAPHICAL REPRESENTATION OF TRAFFIC MODEL INPUT AND OUTPUT

SATURDAY SOUTHBOUND DIRECTION

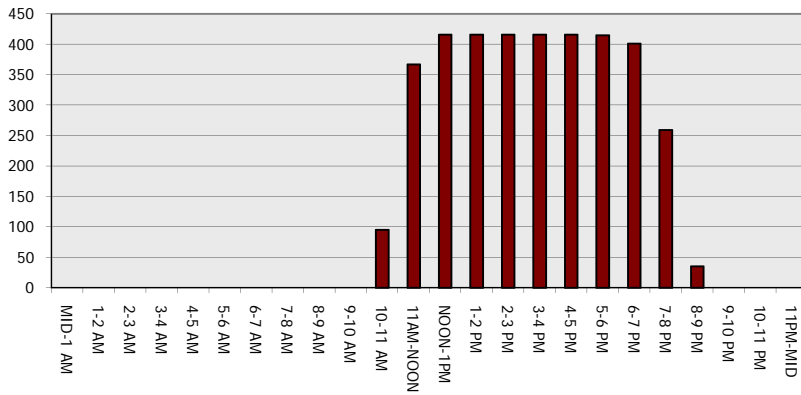
Main Route - Traffic Demand (Vehicles Per Hour)



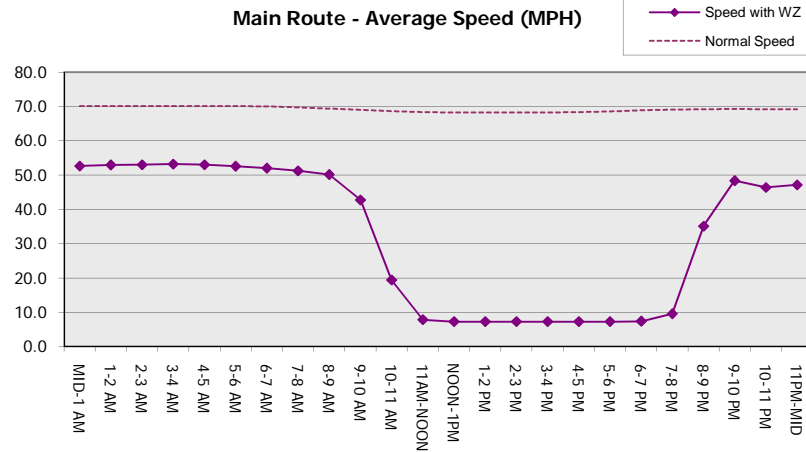
Main Route Average Delay Per Vehicle (Minutes)



Main Route - Average Queue Length (Vehicles)



Main Route - Average Speed (MPH)



USH 41: STH 15 TO STH 125 (OUTAGAMIE COUNTY) CONTINUOUS (24 HOUR) 2 LANE CLOSURE NO DIVERSION ROUTE (MAX QUEUE METHOD)	AUGUST
	Analyzed for 2009 Construction Season

SUMMARY OF TRAFFIC MODEL OUTPUT

SATURDAY NORTHBOUND DIRECTION

TIME OF DAY	FLOWS AND CAPACITY IN VEH/HR							AVERAGE SPEEDS IN MPH		
	MAIN ROUTE		SITE CAPA CITY	FLOW		AV.DEL PER VEH (MINS)	AVERAGE QUEUE (VEH)	MAIN ROUTE		SITE
	DEMAND FLOW	PCT HEAVY		MAIN ROUTE	'DIVER TED'			WITHOUT WORK ZONE	WITH WORK ZONE	
MID-1 AM	328	0.0	1500	328	0	0.51	0	70.2	52.7	44.2
1-2 AM	201	0.0	1500	201	0	0.50	0	70.2	53.0	44.6
2-3 AM	179	0.0	1500	179	0	0.49	0	70.2	53.1	44.8
3-4 AM	138	0.0	1500	138	0	0.49	0	70.2	53.3	45.0
4-5 AM	198	0.0	1500	198	0	0.50	0	70.2	53.0	44.7
5-6 AM	276	0.0	1500	276	0	0.51	0	70.2	52.8	44.4
6-7 AM	472	0.0	1500	472	0	0.53	0	70.2	52.2	43.6
7-8 AM	783	0.0	1500	783	0	0.56	0	69.7	51.2	42.5
8-9 AM	1195	0.0	1499	1195	0	0.71	0	69.2	47.6	38.4
9-10 AM	1598	0.0	1499	1598	0	1.80	25	68.7	32.1	30.9
10-11 AM	2034	0.0	1500	1770	264	12.10+	311	68.2	8.9	30.8
11AM-NOON	2238	0.0	1499	1504	734	16.99+	416	67.9	7.2	30.8
NOON-1PM	2317	0.0	1500	1504	813	16.99+	416	67.9	7.2	30.8
1-2 PM	2336	0.0	1500	1504	832	16.99+	416	67.8	7.2	30.8
2-3 PM	2342	0.0	1500	1503	839	16.99+	416	67.8	7.2	30.8
3-4 PM	2268	0.0	1500	1503	765	16.99+	416	67.9	7.2	30.8
4-5 PM	2142	0.0	1500	1503	640	16.99+	416	68.1	7.2	30.8
5-6 PM	1991	0.0	1500	1502	489	16.98+	416	68.2	7.2	30.8
6-7 PM	1460	0.0	1500	1440	20	16.07+	392	68.9	7.4	30.8
7-8 PM	1014	0.0	1499	1014	0	2.94	130	69.5	24.5	37.7
8-9 PM	845	0.0	1500	845	0	0.57	0	69.7	50.9	42.2
9-10 PM	702	0.0	1500	702	0	0.55	0	69.9	51.4	42.7
10-11 PM	600	0.0	1500	600	0	0.54	0	70.0	51.7	43.1
11PM-MID	437	0.0	1500	437	0	0.53	0	70.2	52.3	43.7

+ INDICATES QUEUEING EXCEEDS USER-SPECIFIED MAXIMUM LIMIT

----- SITE BREAKDOWN DELAYS -----	
BREAKDOWN DURATION (MINS)	0
RANGE OF QUEUE DELAY - MIN (VEH-H) MAX	0.0
AV BREAKDOWNS PER DAY	0.00
AV QUEUE DELAY/DAY (VEH-H)	0.0
AV TOTAL DELAY/DAY (VEH-H)	0.0

----- SITE ACCIDENT DELAYS -----	
BREAKDOWN DURATION (MINS)	0
RANGE OF QUEUE DELAY - MIN (VEH-H) MAX	0
AV BREAKDOWNS PER DAY	0
AV QUEUE DELAY/DAY (VEH-H)	0
AV TOTAL DELAY/DAY (VEH-H)	0

AVERAGE ACCIDENT NUMBERS (PIA/DAY)	
MAIN ROUTE WITHOUT WORKS	0.0081
MAIN ROUTE WITH WORKS	0.0050
'DIVERSION'	0.0036

PIA: Personal Injury Accidents

ECONOMIC IMPACT ON ROAD USERS	
ROAD USER COSTS PER DAY	\$90,474
CONGESTED HOURS PER DAY*	9

*Delays Exceeding User-Specified Maximum

**USH 41: STH 15 TO STH 125 (OUTAGAMIE COUNTY)
CONTINUOUS (24 HOUR) 2 LANE CLOSURE
NO DIVERSION ROUTE (MAX QUEUE METHOD)**

AUGUST
Analyzed for 2009
Construction Season

GRAPHICAL REPRESENTATION OF TRAFFIC MODEL INPUT AND OUTPUT
SATURDAY NORTHBOUND DIRECTION

