

USH 41: STH 15 TO STH 125 (OUTAGAMIE COUNTY) CONTINUOUS (24 HOUR) CLOSURE NO DIVERSION ROUTE (MAX QUEUE METHOD)	AUGUST
	Analyzed for 2009 Construction Season

SUMMARY OF TRAFFIC MODEL OUTPUT

MON-THUR SOUTHBOUND DIRECTION

TIME OF DAY	FLOWS AND CAPACITY IN VEH/HR						AVERAGE SPEEDS IN MPH			
	MAIN ROUTE		SITE CAPA CITY	FLOW		AV.DEL PER VEH (MINS)	AVERAGE QUEUE (VEH)	MAIN ROUTE		SITE
	DEMAND FLOW	PCT HEAVY		MAIN ROUTE	'DIVER TED'			WITHOUT WORK ZONE	WITH WORK ZONE	
MID-1 AM	247	0.0	3000	247	0	0.36	0	70.2	56.9	49.7
1-2 AM	153	0.0	3000	153	0	0.36	0	70.2	56.9	49.7
2-3 AM	143	0.0	3000	143	0	0.36	0	70.2	56.9	49.7
3-4 AM	176	0.0	3000	176	0	0.36	0	70.2	56.9	49.7
4-5 AM	338	0.0	3000	338	0	0.36	0	70.2	56.9	49.7
5-6 AM	1004	0.0	3000	1004	0	0.35	0	69.5	56.7	49.7
6-7 AM	1810	0.0	3000	1810	0	0.34	0	68.5	56.4	49.7
7-8 AM	2668	0.0	3000	2668	0	0.51	0	67.4	51.1	43.1
8-9 AM	1923	0.0	3000	1923	0	0.34	0	68.4	56.4	49.7
9-10 AM	1627	0.0	3000	1627	0	0.34	0	68.7	56.4	49.7
10-11 AM	1740	0.0	3000	1740	0	0.34	0	68.6	56.4	49.7
11AM-NOON	1953	0.0	3000	1953	0	0.34	0	68.3	56.4	49.7
NOON-1PM	2147	0.0	3000	2147	0	0.33	0	68.1	56.3	49.7
1-2 PM	2384	0.0	3000	2384	0	0.33	0	67.8	56.2	49.7
2-3 PM	2601	0.0	3000	2601	0	0.47	0	67.5	52.2	44.5
3-4 PM	2718	0.0	2999	2718	0	0.54	0	67.4	50.3	42.2
4-5 PM	3138	0.0	2999	3138	0	1.73	61	66.8	32.3	37.3
5-6 PM	2942	0.0	2999	2942	0	3.35	146	67.1	21.8	37.5
6-7 PM	1927	0.0	3000	1927	0	0.38	3	68.3	55.0	49.7
7-8 PM	1475	0.0	3000	1475	0	0.34	0	68.9	56.5	49.7
8-9 PM	1412	0.0	3000	1412	0	0.34	0	69.0	56.6	49.7
9-10 PM	1201	0.0	3000	1201	0	0.35	0	69.2	56.6	49.7
10-11 PM	795	0.0	3000	795	0	0.35	0	69.7	56.8	49.7
11PM-MID	495	0.0	3000	495	0	0.36	0	70.1	56.9	49.7

----- SITE BREAKDOWN DELAYS -----

BREAKDOWN DURATION (MINS)	0
RANGE OF QUEUE DELAY - MIN (VEH-H) MAX	0.0
AV BREAKDOWNS PER DAY	0.00
AV QUEUE DELAY/DAY (VEH-H)	0.0
AV TOTAL DELAY/DAY (VEH-H)	0.0

----- SITE ACCIDENT DELAYS -----

BREAKDOWN DURATION (MINS)	0
RANGE OF QUEUE DELAY - MIN (VEH-H) MAX	0
AV BREAKDOWNS PER DAY	0
AV QUEUE DELAY/DAY (VEH-H)	0
AV TOTAL DELAY/DAY (VEH-H)	0

AVERAGE ACCIDENT NUMBERS (PIA/DAY)

MAIN ROUTE WITHOUT WORKS	0.0106
MAIN ROUTE WITH WORKS	0.0082
'DIVERSION'	0.0000

PIA: Personal Injury Accidents

IMPACTS ON ROAD USERS

ROAD USER COSTS PER DAY	\$5,673
CONGESTED HOURS PER DAY*	0

*Delays Exceeding User-Specified Maximum

**USH 41: STH 15 TO STH 125 (OUTAGAMIE COUNTY)
CONTINUOUS (24 HOUR) CLOSURE
NO DIVERSION ROUTE (MAX QUEUE METHOD)**

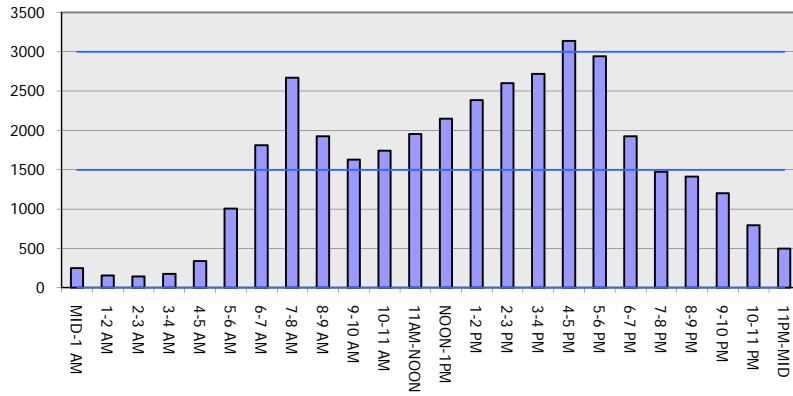
AUGUST

Analyzed for 2009
Construction Season

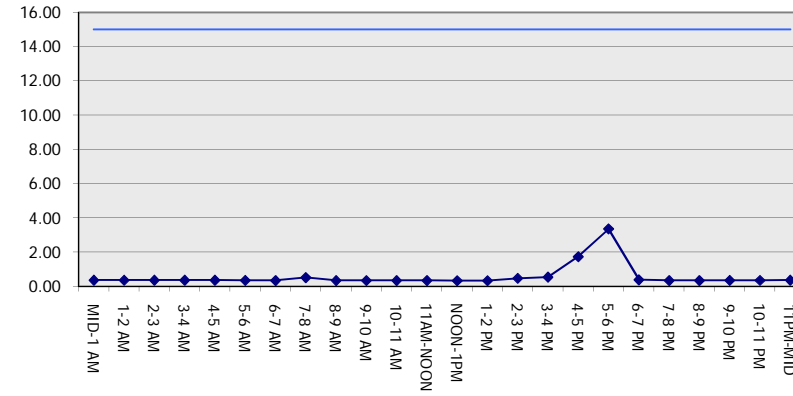
GRAPHICAL REPRESENTATION OF TRAFFIC MODEL INPUT AND OUTPUT

MON-THUR SOUTHBOUND DIRECTION

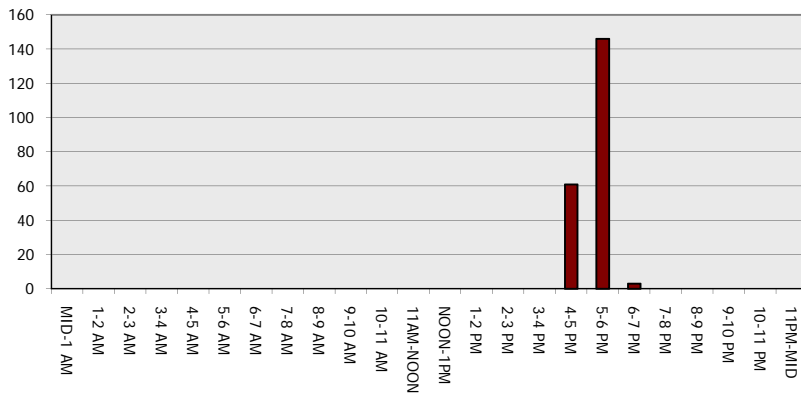
Main Route - Traffic Demand (Vehicles Per Hour)



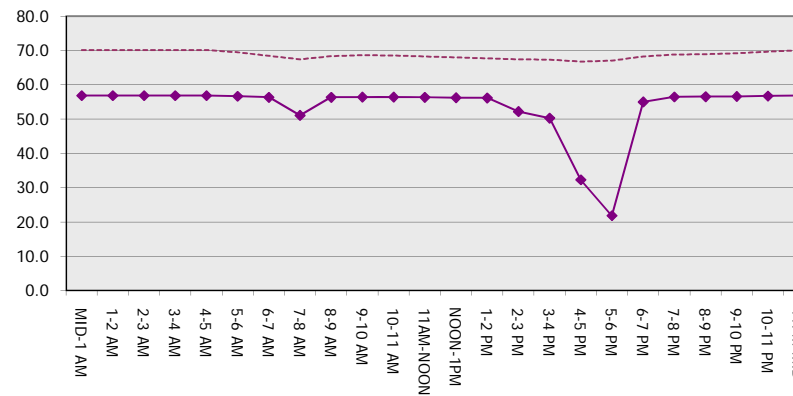
Main Route Average Delay Per Vehicle (Minutes)



Main Route - Average Queue Length (Vehicles)



Main Route - Average Speed (MPH)



USH 41: STH 15 TO STH 125 (OUTAGAMIE COUNTY) CONTINUOUS (24 HOUR) CLOSURE NO DIVERSION ROUTE (MAX QUEUE METHOD)	AUGUST
	Analyzed for 2009 Construction Season

SUMMARY OF TRAFFIC MODEL OUTPUT

MON-THUR NORTHBOUND DIRECTION

TIME OF DAY	FLOWS AND CAPACITY IN VEH/HR						AVERAGE SPEEDS IN MPH			
	MAIN ROUTE		SITE CAPA CITY	FLOW		AV.DEL PER VEH (MINS)	AVERAGE QUEUE (VEH)	MAIN ROUTE		SITE
	DEMAND FLOW	PCT HEAVY		MAIN ROUTE	'DIVER TED'			WITHOUT WORK ZONE	WITH WORK ZONE	
MID-1 AM	199	0.0	3000	199	0	0.36	0	70.2	56.9	49.7
1-2 AM	148	0.0	3000	148	0	0.36	0	70.2	56.9	49.7
2-3 AM	132	0.0	3000	132	0	0.36	0	70.2	56.9	49.7
3-4 AM	144	0.0	3000	144	0	0.36	0	70.2	56.9	49.7
4-5 AM	312	0.0	3000	312	0	0.36	0	70.2	56.9	49.7
5-6 AM	866	0.0	3000	866	0	0.35	0	69.7	56.8	49.7
6-7 AM	1627	0.0	3000	1627	0	0.34	0	68.7	56.4	49.7
7-8 AM	2565	0.0	3000	2565	0	0.44	0	67.6	52.8	45.3
8-9 AM	2025	0.0	3000	2025	0	0.33	0	68.2	56.3	49.7
9-10 AM	1833	0.0	3000	1833	0	0.34	0	68.4	56.4	49.7
10-11 AM	1961	0.0	3000	1961	0	0.34	0	68.3	56.3	49.7
11AM-NOON	2137	0.0	3000	2137	0	0.33	0	68.1	56.3	49.7
NOON-1PM	2174	0.0	3000	2174	0	0.33	0	68.1	56.3	49.7
1-2 PM	2202	0.0	3000	2202	0	0.33	0	68.0	56.3	49.7
2-3 PM	2382	0.0	3000	2382	0	0.33	0	67.8	56.2	49.7
3-4 PM	2698	0.0	2999	2698	0	0.53	0	67.4	50.7	42.6
4-5 PM	3194	0.0	2999	3194	0	2.20	92	66.8	28.3	37.3
5-6 PM	2862	0.0	2999	2862	0	3.58	164	67.2	20.9	38.1
6-7 PM	1927	0.0	3000	1927	0	0.36	1	68.3	55.6	49.7
7-8 PM	1230	0.0	3000	1230	0	0.35	0	69.2	56.6	49.7
8-9 PM	955	0.0	3000	955	0	0.35	0	69.6	56.7	49.7
9-10 PM	725	0.0	3000	725	0	0.35	0	69.9	56.8	49.7
10-11 PM	592	0.0	3000	592	0	0.36	0	70.0	56.8	49.7
11PM-MID	382	0.0	3000	382	0	0.36	0	70.2	56.9	49.7

----- SITE BREAKDOWN DELAYS -----	
BREAKDOWN DURATION (MINS)	0
RANGE OF QUEUE DELAY - MIN (VEH-H) MAX	0.0
AV BREAKDOWNS PER DAY	0.00
AV QUEUE DELAY/DAY (VEH-H)	0.0
AV TOTAL DELAY/DAY (VEH-H)	0.0

----- SITE ACCIDENT DELAYS -----	
BREAKDOWN DURATION (MINS)	0
RANGE OF QUEUE DELAY - MIN (VEH-H) MAX	0
AV BREAKDOWNS PER DAY	0
AV QUEUE DELAY/DAY (VEH-H)	0
AV TOTAL DELAY/DAY (VEH-H)	0

AVERAGE ACCIDENT NUMBERS (PIA/DAY)	
MAIN ROUTE WITHOUT WORKS	0.0101
MAIN ROUTE WITH WORKS	0.0078
'DIVERSION'	0.0000

PIA: Personal Injury Accidents

ECONOMIC IMPACT ON ROAD USERS	
ROAD USER COSTS PER DAY	\$5,829
CONGESTED HOURS PER DAY*	0

*Delays Exceeding User-Specified Maximum

**USH 41: STH 15 TO STH 125 (OUTAGAMIE COUNTY)
CONTINUOUS (24 HOUR) CLOSURE
NO DIVERSION ROUTE (MAX QUEUE METHOD)**

AUGUST
Analyzed for 2009
Construction Season

GRAPHICAL REPRESENTATION OF TRAFFIC MODEL INPUT AND OUTPUT
MON-THUR NORTHBOUND DIRECTION

