

<b>USH 41: STH 441 TO STH 55 (OUTAGMIE AND BROWN COUNTIES)                  CONTINUOUS (24 HOUR) CLOSURE                  NO DIVERSION ROUTE (MAX QUEUE METHOD)</b>	<b>OCTOBER</b>
	Analyzed for 2009 Construction Season

**SUMMARY OF TRAFFIC MODEL OUTPUT**

MON-THUR SOUTHBOUND DIRECTION

TIME OF DAY	FLOWS AND CAPACITY IN VEH/HR						AVERAGE SPEEDS IN MPH				
	MAIN ROUTE		SITE CAPA CITY	FLOW		AV.DEL PER VEH (MINS)	AVERAGE QUEUE (VEH)	MAIN ROUTE		SITE	
	DEMAND FLOW	PCT HEAVY		MAIN ROUTE	'DIVER TED'			WITHOUT WORK ZONE	WITH WORK ZONE		
MID-1 AM	973	0.0	1500	973	0	0.52	0	64.6	57.0	41.8	
1-2 AM	341	0.0	1500	341	0	0.46	0	65.8	58.7	44.2	
2-3 AM	129	0.0	1500	129	0	0.43	0	66.1	59.4	45.0	
3-4 AM	166	0.0	1500	166	0	0.44	0	66.1	59.2	44.8	
4-5 AM	347	0.0	1500	347	0	0.46	0	65.8	58.7	44.1	
5-6 AM	962	0.0	1499	962	0	0.54	0	64.6	56.7	41.0	
6-7 AM	1992	0.0	1499	1992	0	5.98	185	62.7	25.2	30.8	
7-8 AM	2912	0.0	1500	1500	1412	15.31+	400	56.7	12.7	31.7	
8-9 AM	2020	0.0	1499	1434	585	15.54+	394	62.6	12.9	31.2	
9-10 AM	1582	0.0	1499	1475	107	15.74+	397	63.5	12.8	30.8	
10-11 AM	1559	0.0	1499	1500	59	15.85+	399	63.5	12.7	30.8	
11AM-NOON	1618	0.0	1500	1500	118	15.84+	400	63.3	12.7	30.8	
NOON-1PM	1669	0.0	1500	1500	169	15.83+	400	63.3	12.7	30.8	
1-2 PM	1707	0.0	1500	1500	207	15.83+	400	63.2	12.7	30.8	
2-3 PM	1869	0.0	1500	1500	369	15.81+	400	62.9	12.7	30.8	
3-4 PM	2147	0.0	1500	1500	647	15.78+	400	62.4	12.7	30.8	
4-5 PM	2575	0.0	1500	1500	1075	15.62+	400	60.1	12.7	30.8	
5-6 PM	2505	0.0	1500	1500	1005	15.67+	400	60.9	12.7	30.8	
6-7 PM	1375	0.0	1500	1338	37	14.19+	360	63.8	13.9	30.8	
7-8 PM	911	0.0	1500	911	0	1.82	57	64.7	44.1	40.7	
8-9 PM	688	0.0	1500	688	0	0.49	0	65.1	57.8	42.8	
9-10 PM	641	0.0	1500	641	0	0.48	0	65.2	57.9	43.0	
10-11 PM	474	0.0	1500	474	0	0.47	0	65.5	58.4	43.6	
11PM-MID	266	0.0	1500	266	0	0.45	0	65.9	59.0	44.4	

+ INDICATES QUEUEING EXCEEDS USER-SPECIFIED MAXIMUM LIMIT

*----- SITE BREAKDOWN DELAYS -----*	
BREAKDOWN DURATION (MINS)	0
RANGE OF QUEUE DELAY - MIN (VEH-H) MAX	0.0
AV BREAKDOWNS PER DAY	0.00
AV QUEUE DELAY/DAY (VEH-H)	0.0
AV TOTAL DELAY/DAY (VEH-H)	0.0

*----- SITE ACCIDENT DELAYS -----*	
BREAKDOWN DURATION (MINS)	0
RANGE OF QUEUE DELAY - MIN (VEH-H) MAX	0
AV BREAKDOWNS PER DAY	0
AV QUEUE DELAY/DAY (VEH-H)	0
AV TOTAL DELAY/DAY (VEH-H)	0

AVERAGE ACCIDENT NUMBERS (PIA/DAY)	
MAIN ROUTE WITHOUT WORKS	0.0210
MAIN ROUTE WITH WORKS	0.0154
'DIVERSION'	0.0090
<small>PIA: Personal Injury Accidents</small>	
IMPACTS ON ROAD USERS	
ROAD USER COSTS PER DAY	\$84,013
CONGESTED HOURS PER DAY*	12

\*Delays Exceeding User-Specified Maximum

**USH 41: STH 441 TO STH 55 (OUTAGMIE AND BROWN COUNTIES)  
 CONTINUOUS (24 HOUR) CLOSURE  
 NO DIVERSION ROUTE (MAX QUEUE METHOD)**

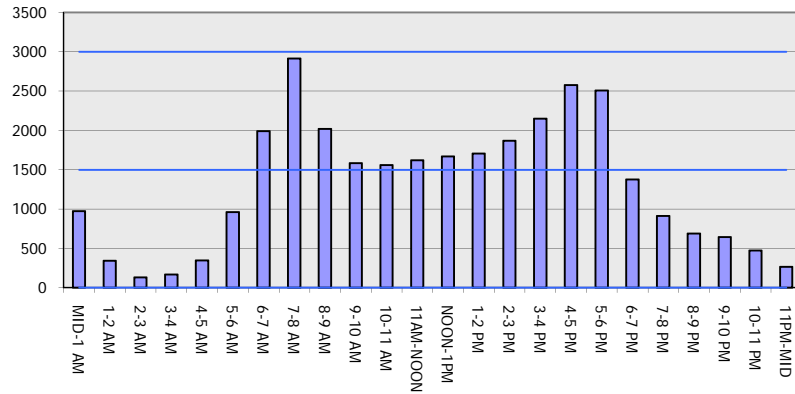
**OCTOBER**

Analyzed for 2009  
 Construction Season

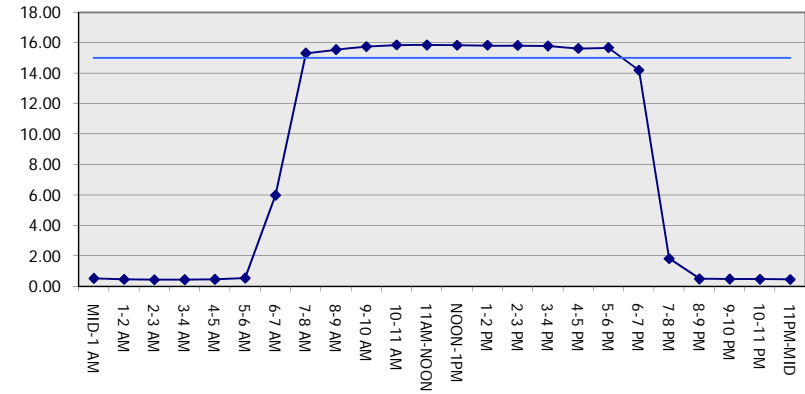
**GRAPHICAL REPRESENTATION OF TRAFFIC MODEL INPUT AND OUTPUT**

**MON-THUR SOUTHBOUND DIRECTION**

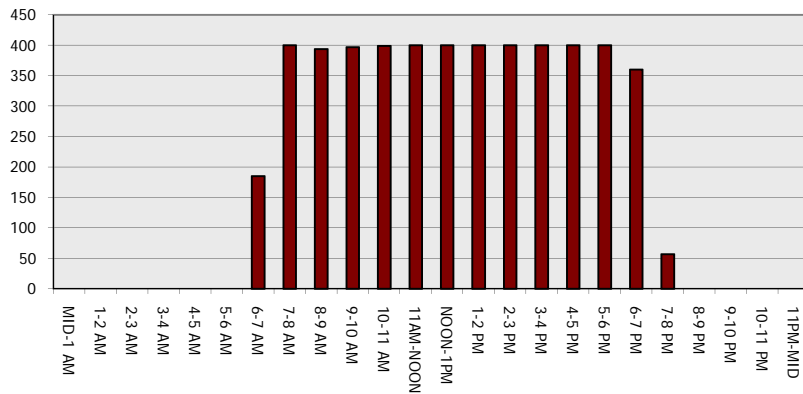
**Main Route - Traffic Demand (Vehicles Per Hour)**



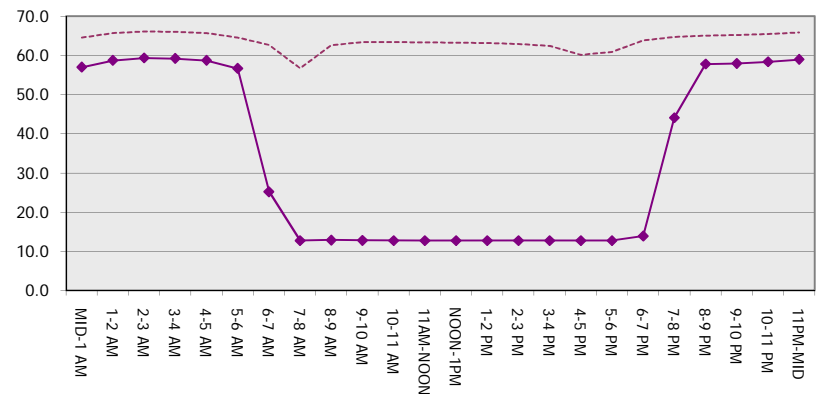
**Main Route Average Delay Per Vehicle (Minutes)**



**Main Route - Average Queue Length (Vehicles)**



**Main Route - Average Speed (MPH)**



<b>USH 41: STH 441 TO STH 55 (OUTAGMIE AND BROWN COUNTIES)                  CONTINUOUS (24 HOUR) CLOSURE                  NO DIVERSION ROUTE (MAX QUEUE METHOD)</b>	<b>OCTOBER</b>
	Analyzed for 2009 Construction Season

**SUMMARY OF TRAFFIC MODEL OUTPUT**

MON-THUR                      NORTHBOUND DIRECTION

TIME OF DAY	FLOWS AND CAPACITY IN VEH/HR							AVERAGE SPEEDS IN MPH		
	MAIN ROUTE		SITE CAPA CITY	FLOW		AV.DEL PER VEH (MINS)	AVERAGE QUEUE (VEH)	MAIN ROUTE		SITE
	DEMAND FLOW	PCT HEAVY		MAIN ROUTE	'DIVER TED'			WITHOUT WORK ZONE	WITH WORK ZONE	
MID-1 AM	165	0.0	1500	165	0	0.44	0	66.1	59.2	44.8
1-2 AM	113	0.0	1500	113	0	0.43	0	66.2	59.4	45.0
2-3 AM	129	0.0	1500	129	0	0.43	0	66.1	59.4	45.0
3-4 AM	111	0.0	1500	111	0	0.43	0	66.2	59.4	45.0
4-5 AM	273	0.0	1500	273	0	0.45	0	65.9	58.9	44.4
5-6 AM	808	0.0	1500	808	0	0.50	0	64.9	57.4	42.4
6-7 AM	1657	0.0	1499	1657	0	2.21	44	63.3	40.7	31.2
7-8 AM	2429	0.0	1500	1761	669	14.48+	374	61.6	13.5	31.8
8-9 AM	1721	0.0	1499	1450	271	15.63+	394	63.2	12.9	30.8
9-10 AM	1458	0.0	1499	1458	0	15.05+	378	63.7	13.2	30.8
10-11 AM	1443	0.0	1500	1443	0	12.81	318	63.7	15.0	30.8
11AM-NOON	1518	0.0	1500	1518	0	12.03	297	63.5	15.8	30.8
NOON-1PM	1566	0.0	1500	1566	0	13.53	338	63.5	14.4	30.8
1-2 PM	1662	0.0	1499	1520	143	15.74+	397	63.3	12.8	30.8
2-3 PM	1933	0.0	1500	1500	433	15.80+	400	62.8	12.7	30.8
3-4 PM	2291	0.0	1500	1500	791	15.76+	400	62.1	12.7	30.8
4-5 PM	2817	0.0	1500	1500	1317	15.44+	400	57.6	12.7	30.8
5-6 PM	2500	0.0	1500	1500	1000	15.68+	400	60.9	12.7	30.8
6-7 PM	1450	0.0	1500	1383	68	14.57+	368	63.7	13.6	30.8
7-8 PM	1020	0.0	1499	1020	0	2.65	92	64.5	38.4	38.4
8-9 PM	910	0.0	1500	910	0	0.51	0	64.7	57.2	42.0
9-10 PM	733	0.0	1500	733	0	0.49	0	65.0	57.7	42.7
10-11 PM	425	0.0	1500	425	0	0.46	0	65.6	58.5	43.8
11PM-MID	271	0.0	1500	271	0	0.45	0	65.9	58.9	44.4

+ INDICATES QUEUEING EXCEEDS USER-SPECIFIED MAXIMUM LIMIT

*----- SITE BREAKDOWN DELAYS -----*	
BREAKDOWN DURATION (MINS)	0
RANGE OF QUEUE DELAY - MIN (VEH-H) MAX	0.0
AV BREAKDOWNS PER DAY	0.00
AV QUEUE DELAY/DAY (VEH-H)	0.0
AV TOTAL DELAY/DAY (VEH-H)	0.0

*----- SITE ACCIDENT DELAYS -----*	
BREAKDOWN DURATION (MINS)	0
RANGE OF QUEUE DELAY - MIN (VEH-H) MAX	0
AV BREAKDOWNS PER DAY	0
AV QUEUE DELAY/DAY (VEH-H)	0
AV TOTAL DELAY/DAY (VEH-H)	0

AVERAGE ACCIDENT NUMBERS (PIA/DAY)	
MAIN ROUTE WITHOUT WORKS	0.0197
MAIN ROUTE WITH WORKS	0.0149
'DIVERSION'	0.0073

PIA: Personal Injury Accidents

ECONOMIC IMPACT ON ROAD USERS	
ROAD USER COSTS PER DAY	\$76,060
CONGESTED HOURS PER DAY*	9

\*Delays Exceeding User-Specified Maximum

**USH 41: STH 441 TO STH 55 (OUTAGMIE AND BROWN COUNTIES)  
 CONTINUOUS (24 HOUR) CLOSURE  
 NO DIVERSION ROUTE (MAX QUEUE METHOD)**

**OCTOBER**

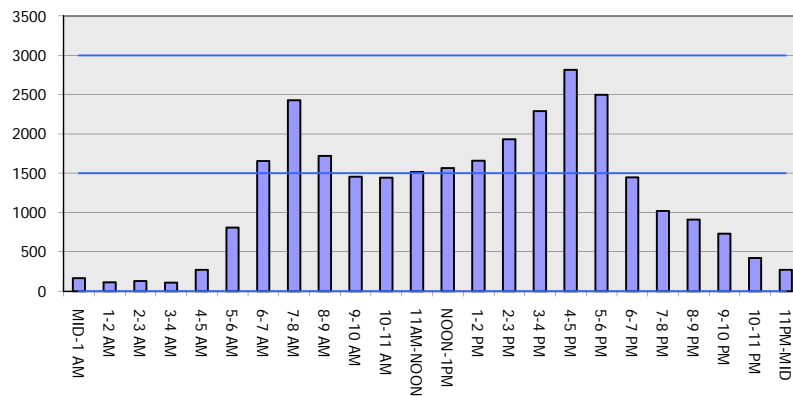
Analyzed for 2009  
 Construction Season

**GRAPHICAL REPRESENTATION OF TRAFFIC MODEL INPUT AND OUTPUT**

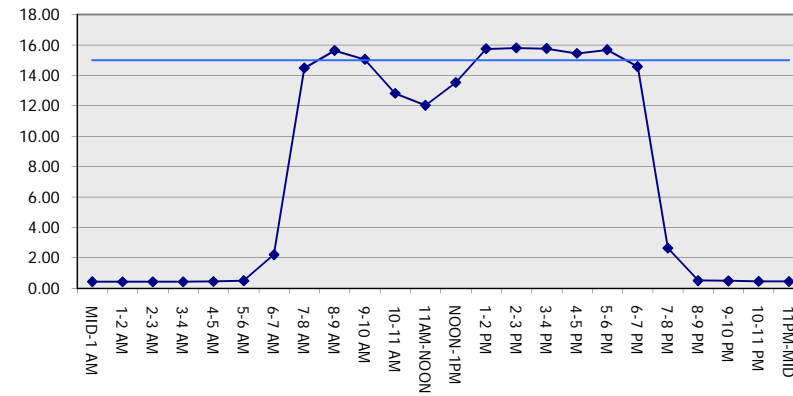
**MON-THUR**

**NORTHBOUND DIRECTION**

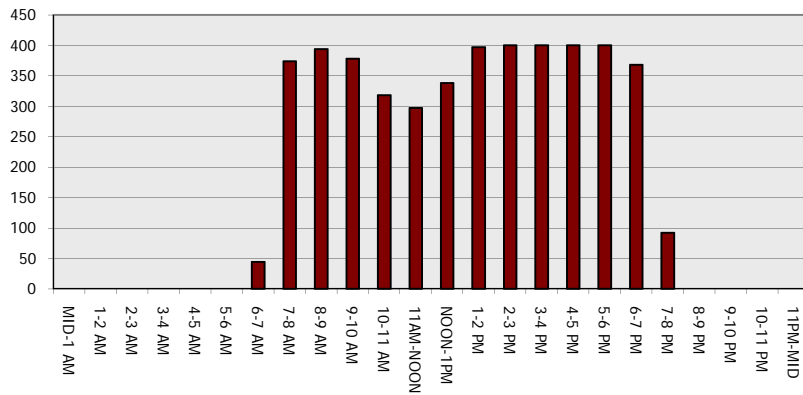
**Main Route - Traffic Demand (Vehicles Per Hour)**



**Main Route Average Delay Per Vehicle (Minutes)**



**Main Route - Average Queue Length (Vehicles)**



**Main Route - Average Speed (MPH)**

