

USH 41: STH 22 TO USH 141 CONTINUOUS (24 HOUR) CLOSURE DIVERSION ROUTE: STH 141 - STH 22	AUGUST
	Analyzed for 2009 Construction Season

SUMMARY OF TRAFFIC MODEL OUTPUT

SUNDAY SOUTHBOUND DIRECTION

TIME OF DAY	FLOWS AND CAPACITY IN VEH/HR								AVERAGE SPEEDS IN MPH						
	MAIN ROUTE		ALTERNATE ROUTE		SITE CAPA CITY	FLOW MAIN ROUTE	FLOW DIVER -TING	TOTAL DIVN FLOW	AV.DEL PER VEH (MINS)	AVERAGE QUEUE (VEH)	MAIN ROUTE		ALTERNATE ROUTE		
	DEMAND FLOW	PCT HEAVY	NORMAL FLOW	PCT HEAVY							WITHOUT WORK ZN	WITH WORK ZN	SITE	WITHOUT WORK ZN	WITH WORK ZN
MID-1 AM	38	0.0	22	0.0	1500	38	0	22	0.50	0	63.8	61.0	41.9	39.5	39.5
1-2 AM	21	0.0	13	0.0	1500	21	0	13	0.50	0	63.8	61.1	41.9	39.6	39.6
2-3 AM	21	0.0	13	0.0	1500	21	0	13	0.50	0	63.8	61.1	41.9	39.6	39.6
3-4 AM	11	0.0	6	0.0	1500	11	0	6	0.50	0	63.9	61.1	42.0	39.7	39.7
4-5 AM	41	0.0	23	0.0	1500	41	0	23	0.50	0	63.8	61.0	41.9	39.4	39.4
5-6 AM	49	0.0	28	0.0	1500	49	0	28	0.50	0	63.8	61.0	41.9	39.4	39.4
6-7 AM	68	0.0	40	0.0	1500	68	0	40	0.51	0	63.8	61.0	41.7	39.2	39.2
7-8 AM	105	0.0	61	0.0	1500	105	0	61	0.51	0	63.7	60.9	41.6	39.0	39.0
8-9 AM	210	0.0	121	0.0	1500	210	0	121	0.52	0	63.5	60.7	41.3	38.3	38.3
9-10 AM	283	0.0	163	0.0	1500	283	0	163	0.53	0	63.4	60.5	41.0	37.7	37.7
10-11 AM	430	0.0	249	0.0	1500	430	0	249	0.54	0	63.1	60.2	40.6	36.6	36.6
11A-NOON	474	0.0	274	0.0	1500	474	0	274	0.54	0	63.0	60.1	40.4	36.3	36.3
NOON-1PM	581	0.0	336	0.0	1500	581	0	336	0.55	0	62.8	59.9	40.1	35.6	35.6
1-2 PM	579	0.0	335	0.0	1500	579	0	335	0.55	0	62.8	59.9	40.1	35.6	35.6
2-3 PM	559	0.0	323	0.0	1500	559	0	323	0.55	0	62.8	59.9	40.1	35.7	35.7
3-4 PM	601	0.0	347	0.0	1500	601	0	347	0.56	0	62.8	59.8	40.0	35.5	35.5
4-5 PM	579	0.0	335	0.0	1500	579	0	335	0.55	0	62.8	59.9	40.1	35.6	35.6
5-6 PM	463	0.0	268	0.0	1500	463	0	268	0.54	0	63.0	60.1	40.4	36.4	36.4
6-7 PM	408	0.0	235	0.0	1500	408	0	235	0.54	0	63.2	60.2	40.6	36.8	36.8
7-8 PM	331	0.0	191	0.0	1500	331	0	191	0.53	0	63.3	60.4	40.9	37.4	37.4
8-9 PM	219	0.0	127	0.0	1500	219	0	127	0.52	0	63.5	60.7	41.2	38.2	38.2
9-10 PM	146	0.0	85	0.0	1500	146	0	85	0.51	0	63.7	60.8	41.5	38.7	38.7
10-11 PM	69	0.0	40	0.0	1500	69	0	40	0.51	0	63.8	61.0	41.7	39.2	39.2
11PM-MID	51	0.0	29	0.0	1500	51	0	29	0.50	0	63.8	61.0	41.8	39.4	39.4

----- SITE BREAKDOWN DELAYS -----	
BREAKDOWN DURATION (MINS)	0
RANGE OF QUEUE DELAY - MIN (VEH-H) MAX	0.0
RANGE OF DIVN DELAY - MIN (VEH-H) MAX	0.0
AV BREAKDOWNS PER DAY	0.00
AV QUEUE DELAY/DAY (VEH-H)	0.0
AV DIVN DELAY/DAY (VEH-H)	0.0
AV TOTAL DELAY/DAY (VEH-H)	0.0

----- SITE ACCIDENT DELAYS -----	
ACCIDENT DURATION (MINS)	0
RANGE OF QUEUE DELAY - MIN (VEH-H) MAX	0.0
RANGE OF DIVN DELAY - MIN (VEH-H) MAX	0.0
AV ACCIDENTS PER DAY	0.00
AV QUEUE DELAY/DAY (VEH-H)	0.0
AV DIVN DELAY/DAY (VEH-H)	0.0
AV TOTAL DELAY/DAY (VEH-H)	0.0

AVERAGE ACCIDENT NUMBERS (PIA/DAY)	
MAIN ROUTE WITHOUT WORKS	0.0123
MAIN ROUTE WITH WORKS	0.0130
DIVERSION	0.0637

PIA: Personal Injury Accidents

IMPACTS ON ROAD USERS	
ROAD USER COSTS PER DAY (DOLLARS)	\$888
CONGESTED HOURS PER DAY*	0

*Delays Exceeding 15 Minutes

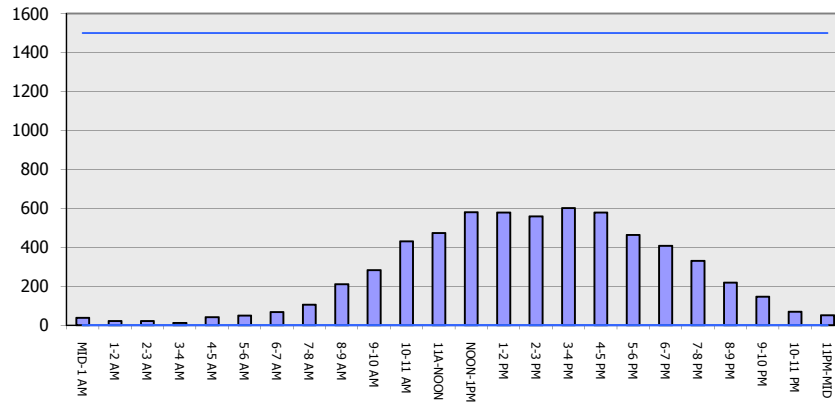
**USH 41: STH 22 TO USH 141
CONTINUOUS (24 HOUR) CLOSURE
DIVERSION ROUTE: STH 141 - STH 22**

AUGUST
Analyzed for 2009
Construction Season

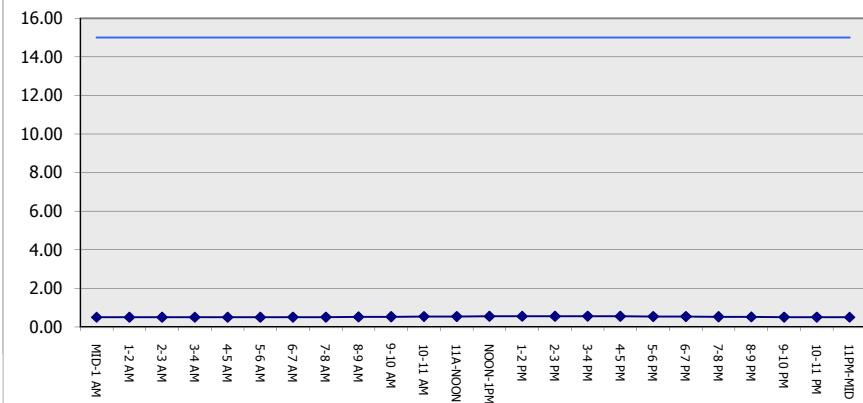
GRAPHICAL REPRESENTATION OF TRAFFIC MODEL INPUT AND OUTPUT

SUNDAY SOUTHBOUND DIRECTION

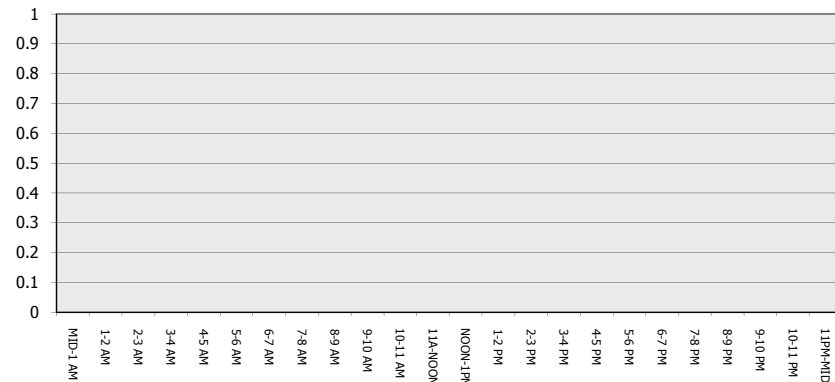
Main Route - Traffic Demand (Vehicles Per Hour)



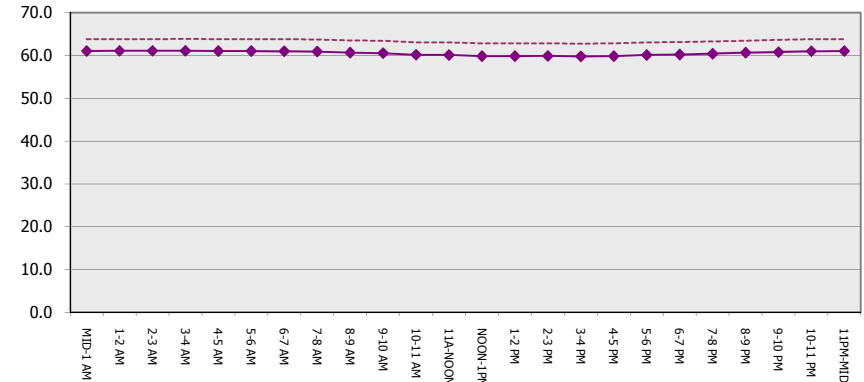
Main Route Average Delay Per Vehicle (Minutes)



Main Route - Average Queue Length (Vehicles)



Main Route - Average Speed (MPH)



USH 41: STH 22 TO USH 141 CONTINUOUS (24 HOUR) CLOSURE DIVERSION ROUTE: STH 141 - STH 22	AUGUST
	Analyzed for 2009 Construction Season

SUMMARY OF TRAFFIC MODEL OUTPUT

SUNDAY NORTHBOUND DIRECTION

TIME OF DAY	FLOWS AND CAPACITY IN VEH/HR								AVERAGE SPEEDS IN MPH						
	MAIN		DIVERSION		SITE CAPA CITY	FLOW MAIN ROUTE	FLOW DIVER -TING	TOTAL DIVN FLOW	AV.DEL PER VEH (MINS)	AVERAGE QUEUE (VEH)	MAIN ROUTE		SITE	ALTERNATE ROUTE	
	DEMAND FLOW	PCT HEAVY	NORMAL FLOW	PCT HEAVY							WITHOUT WORK ZN	WITH WORK ZN		WITHOUT WORK ZN	WITH WORK ZN
MID-1 AM	85	0.0	49	0.0	1500	85	0	49	0.51	0	63.7	61.0	41.7	39.1	39.1
1-2 AM	50	0.0	28	0.0	1500	50	0	28	0.50	0	63.8	61.0	41.8	39.4	39.4
2-3 AM	25	0.0	15	0.0	1500	25	0	15	0.50	0	63.8	61.1	41.9	39.6	39.6
3-4 AM	27	0.0	16	0.0	1500	27	0	16	0.50	0	63.8	61.1	41.9	39.6	39.6
4-5 AM	16	0.0	9	0.0	1500	16	0	9	0.50	0	63.9	61.1	41.9	39.6	39.6
5-6 AM	38	0.0	22	0.0	1500	38	0	22	0.50	0	63.8	61.0	41.9	39.5	39.5
6-7 AM	67	0.0	39	0.0	1500	67	0	39	0.51	0	63.8	61.0	41.8	39.2	39.2
7-8 AM	98	0.0	57	0.0	1500	98	0	57	0.51	0	63.7	60.9	41.7	39.1	39.1
8-9 AM	143	0.0	83	0.0	1500	143	0	83	0.51	0	63.7	60.9	41.5	38.7	38.7
9-10 AM	258	0.0	149	0.0	1500	258	0	149	0.52	0	63.4	60.6	41.1	37.9	37.9
10-11 AM	307	0.0	178	0.0	1500	307	0	178	0.53	0	63.3	60.5	40.9	37.5	37.5
11A-NOON	364	0.0	210	0.0	1500	364	0	210	0.53	0	63.2	60.4	40.7	37.1	37.1
NOON-1PM	381	0.0	221	0.0	1500	381	0	221	0.53	0	63.2	60.3	40.7	37.0	37.0
1-2 PM	425	0.0	246	0.0	1500	425	0	246	0.54	0	63.1	60.2	40.6	36.7	36.7
2-3 PM	389	0.0	225	0.0	1500	389	0	225	0.54	0	63.2	60.3	40.7	36.9	36.9
3-4 PM	380	0.0	220	0.0	1500	380	0	220	0.53	0	63.2	60.3	40.7	37.0	37.0
4-5 PM	430	0.0	249	0.0	1500	430	0	249	0.54	0	63.1	60.2	40.6	36.6	36.6
5-6 PM	352	0.0	203	0.0	1500	352	0	203	0.53	0	63.2	60.4	40.8	37.2	37.2
6-7 PM	315	0.0	182	0.0	1500	315	0	182	0.53	0	63.3	60.4	40.9	37.5	37.5
7-8 PM	235	0.0	136	0.0	1500	235	0	136	0.52	0	63.5	60.6	41.2	38.1	38.1
8-9 PM	156	0.0	90	0.0	1500	156	0	90	0.51	0	63.6	60.8	41.4	38.6	38.6
9-10 PM	146	0.0	85	0.0	1500	146	0	85	0.51	0	63.7	60.8	41.5	38.7	38.7
10-11 PM	239	0.0	138	0.0	1500	239	0	138	0.52	0	63.5	60.6	41.2	38.0	38.0
11PM-MID	209	0.0	120	0.0	1500	209	0	120	0.52	0	63.5	60.7	41.3	38.3	38.3

----- SITE BREAKDOWN DELAYS -----	
BREAKDOWN DURATION (MINS)	0
RANGE OF QUEUE DELAY - MIN	0.0
(VEH-H) MAX	0.0
RANGE OF DIVN DELAY - MIN	0.0
(VEH-H) MAX	0.0
AV BREAKDOWNS PER DAY	0.00
AV QUEUE DELAY/DAY (VEH-H)	0.0
AV DIVN DELAY/DAY (VEH-H)	0.0
AV TOTAL DELAY/DAY (VEH-H)	0.0

----- SITE ACCIDENT DELAYS -----	
ACCIDENT DURATION (MINS)	0
RANGE OF QUEUE DELAY - MIN	0.0
(VEH-H) MAX	0.0
RANGE OF DIVN DELAY - MIN	0.0
(VEH-H) MAX	0.0
AV ACCIDENTS PER DAY	0.00
AV QUEUE DELAY/DAY (VEH-H)	0.0
AV DIVN DELAY/DAY (VEH-H)	0.0
AV TOTAL DELAY/DAY (VEH-H)	0.0

AVERAGE ACCIDENT NUMBERS (PIA/DAY)	
MAIN ROUTE WITHOUT WORKS	0.0100
MAIN ROUTE WITH WORKS	0.0105
DIVERSION	0.0516

PIA: Personal Injury Accidents

IMPACTS ON ROAD USERS	
ROAD USER COSTS PER DAY (DOLLARS)	\$702
CONGESTED HOURS PER DAY*	0

*Delays Exceeding 15 Minutes

**USH 41: STH 22 TO USH 141
CONTINUOUS (24 HOUR) CLOSURE
DIVERSION ROUTE: STH 141 - STH 22**

AUGUST
Analyzed for 2009
Construction Season

GRAPHICAL REPRESENTATION OF TRAFFIC MODEL INPUT AND OUTPUT
SUNDAY NORTHBOUND DIRECTION

