

USH 41: STH 22 TO USH 141 CONTINUOUS (24 HOUR) CLOSURE DIVERSION ROUTE: STH 141 - STH 22	AUGUST
	Analyzed for 2009 Construction Season

SUMMARY OF TRAFFIC MODEL OUTPUT
SATURDAY SOUTHBOUND DIRECTION

TIME OF DAY	FLOWS AND CAPACITY IN VEH/HR							AVERAGE SPEEDS IN MPH							
	MAIN ROUTE		ALTERNATE ROUTE		SITE CAPA CITY	FLOW MAIN ROUTE	FLOW DIVER -TING	TOTAL DIVN FLOW	AV.DEL PER VEH (MINS)	AVERAGE QUEUE (VEH)	MAIN ROUTE		ALTERNATE ROUTE		
	DEMAND FLOW	PCT HEAVY	NORMAL FLOW	PCT HEAVY							WITHOUT WORK ZN	WITH WORK ZN	SITE	WITHOUT WORK ZN	WITH WORK ZN
MID-1 AM	22	0.0	13	0.0	1500	22	0	13	0.50	0	63.8	61.1	41.9	39.6	39.6
1-2 AM	28	0.0	17	0.0	1500	28	0	17	0.50	0	63.8	61.1	41.9	39.6	39.6
2-3 AM	13	0.0	7	0.0	1500	13	0	7	0.50	0	63.9	61.1	42.0	39.7	39.7
3-4 AM	19	0.0	12	0.0	1500	19	0	12	0.50	0	63.8	61.1	41.9	39.6	39.6
4-5 AM	60	0.0	35	0.0	1500	60	0	35	0.50	0	63.8	61.0	41.8	39.3	39.3
5-6 AM	78	0.0	45	0.0	1500	78	0	45	0.51	0	63.8	61.0	41.7	39.2	39.2
6-7 AM	115	0.0	66	0.0	1500	115	0	66	0.51	0	63.7	60.9	41.6	38.9	38.9
7-8 AM	210	0.0	121	0.0	1500	210	0	121	0.52	0	63.5	60.7	41.3	38.3	38.3
8-9 AM	249	0.0	144	0.0	1500	249	0	144	0.52	0	63.5	60.6	41.1	37.9	37.9
9-10 AM	382	0.0	221	0.0	1500	382	0	221	0.53	0	63.2	60.3	40.7	37.0	37.0
10-11 AM	442	0.0	255	0.0	1500	442	0	255	0.54	0	63.1	60.2	40.5	36.6	36.6
11A-NOON	460	0.0	266	0.0	1500	460	0	266	0.54	0	63.0	60.1	40.4	36.5	36.5
NOON-1PM	391	0.0	226	0.0	1500	391	0	226	0.54	0	63.2	60.3	40.7	36.9	36.9
1-2 PM	407	0.0	235	0.0	1500	407	0	235	0.54	0	63.2	60.2	40.6	36.8	36.8
2-3 PM	377	0.0	219	0.0	1500	377	0	219	0.53	0	63.2	60.3	40.7	37.0	37.0
3-4 PM	412	0.0	239	0.0	1500	412	0	239	0.54	0	63.2	60.2	40.6	36.8	36.8
4-5 PM	369	0.0	213	0.0	1500	369	0	213	0.53	0	63.2	60.4	40.7	37.1	37.1
5-6 PM	368	0.0	212	0.0	1500	368	0	212	0.53	0	63.2	60.4	40.7	37.1	37.1
6-7 PM	262	0.0	152	0.0	1500	262	0	152	0.52	0	63.4	60.5	41.1	37.9	37.9
7-8 PM	194	0.0	112	0.0	1500	194	0	112	0.52	0	63.5	60.7	41.3	38.4	38.4
8-9 PM	171	0.0	99	0.0	1500	171	0	99	0.51	0	63.6	60.8	41.4	38.5	38.5
9-10 PM	145	0.0	84	0.0	1500	145	0	84	0.51	0	63.7	60.9	41.5	38.7	38.7
10-11 PM	108	0.0	62	0.0	1500	108	0	62	0.51	0	63.7	60.9	41.6	39.0	39.0
11PM-MID	53	0.0	30	0.0	1500	53	0	30	0.50	0	63.8	61.0	41.8	39.4	39.4

----- SITE BREAKDOWN DELAYS -----	
BREAKDOWN DURATION (MINS)	0
RANGE OF QUEUE DELAY - MIN	0.0
(VEH-H) MAX	0.0
RANGE OF DIVN DELAY - MIN	0.0
(VEH-H) MAX	0.0
AV BREAKDOWNS PER DAY	0.00
AV QUEUE DELAY/DAY (VEH-H)	0.0
AV DIVN DELAY/DAY (VEH-H)	0.0
AV TOTAL DELAY/DAY (VEH-H)	0.0

----- SITE ACCIDENT DELAYS -----	
ACCIDENT DURATION (MINS)	0
RANGE OF QUEUE DELAY - MIN	0.0
(VEH-H) MAX	0.0
RANGE OF DIVN DELAY - MIN	0.0
(VEH-H) MAX	0.0
AV ACCIDENTS PER DAY	0.00
AV QUEUE DELAY/DAY (VEH-H)	0.0
AV DIVN DELAY/DAY (VEH-H)	0.0
AV TOTAL DELAY/DAY (VEH-H)	0.0

AVERAGE ACCIDENT NUMBERS (PIA/DAY)	
MAIN ROUTE WITHOUT WORKS	0.0104
MAIN ROUTE WITH WORKS	0.0110
DIVERSION	0.0536

PIA: Personal Injury Accidents

IMPACTS ON ROAD USERS	
ROAD USER COSTS PER DAY (DOLLARS)	\$721
CONGESTED HOURS PER DAY*	0

*Delays Exceeding 15 Minutes

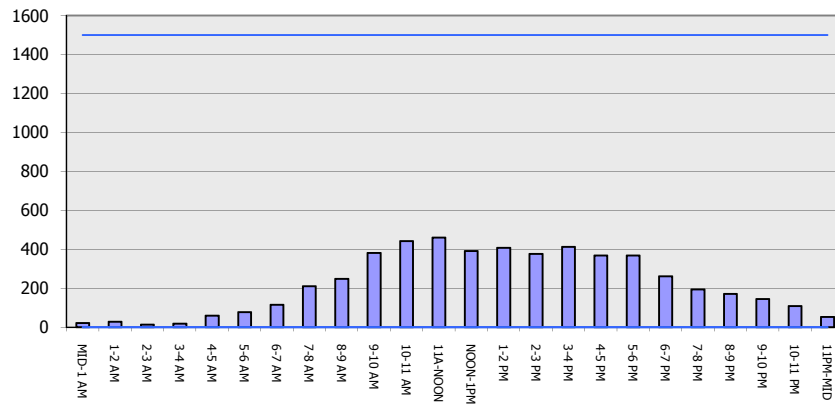
**USH 41: STH 22 TO USH 141
CONTINUOUS (24 HOUR) CLOSURE
DIVERSION ROUTE: STH 141 - STH 22**

AUGUST
Analyzed for 2009
Construction Season

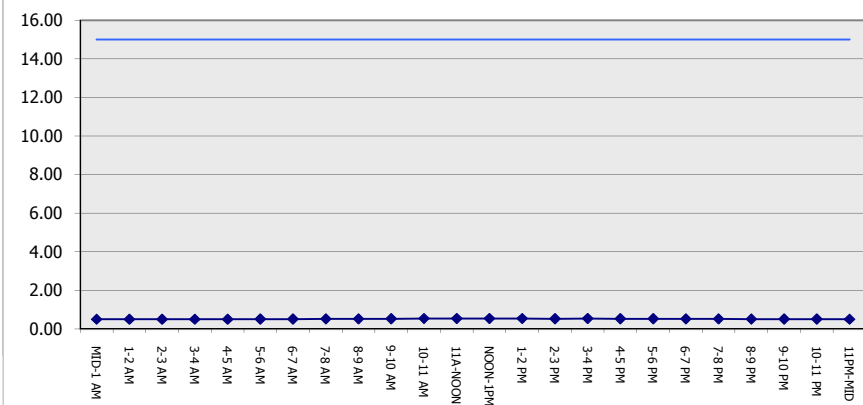
GRAPHICAL REPRESENTATION OF TRAFFIC MODEL INPUT AND OUTPUT

SATURDAY SOUTHBOUND DIRECTION

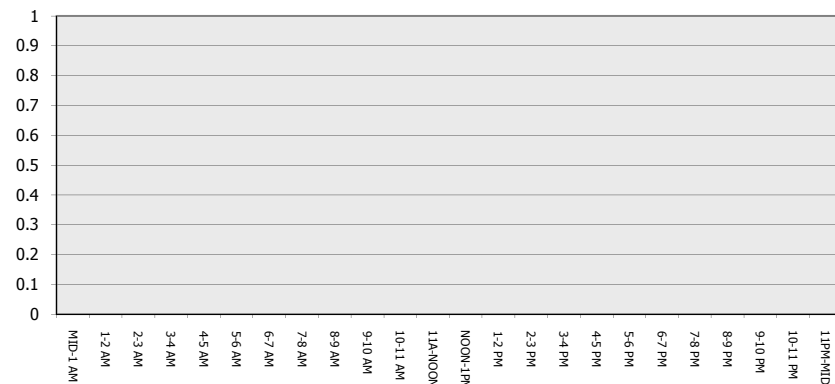
Main Route - Traffic Demand (Vehicles Per Hour)



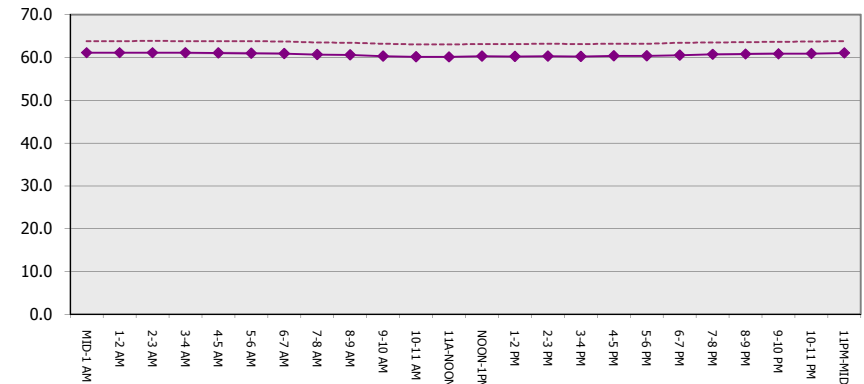
Main Route Average Delay Per Vehicle (Minutes)



Main Route - Average Queue Length (Vehicles)



Main Route - Average Speed (MPH)



USH 41: STH 22 TO USH 141 CONTINUOUS (24 HOUR) CLOSURE DIVERSION ROUTE: STH 141 - STH 22	AUGUST
	Analyzed for 2009 Construction Season

SUMMARY OF TRAFFIC MODEL OUTPUT
SATURDAY NORTHBOUND DIRECTION

TIME OF DAY	FLOWS AND CAPACITY IN VEH/HR								AVERAGE SPEEDS IN MPH						
	MAIN		DIVERSION		SITE CAPA CITY	FLOW MAIN ROUTE	FLOW DIVER -TING	TOTAL DIVN FLOW	AV.DEL PER VEH (MINS)	AVERAGE QUEUE (VEH)	MAIN ROUTE		SITE	ALTERNATE ROUTE	
	DEMAND FLOW	PCT HEAVY	NORMAL FLOW	PCT HEAVY							WITHOUT WORK ZN	WITH WORK ZN		WITHOUT WORK ZN	WITH WORK ZN
MID-1 AM	95	0.0	55	0.0	1500	95	0	55	0.51	0	63.7	60.9	41.7	39.1	39.1
1-2 AM	61	0.0	36	0.0	1500	61	0	36	0.50	0	63.8	61.0	41.8	39.3	39.3
2-3 AM	46	0.0	26	0.0	1500	46	0	26	0.50	0	63.8	61.0	41.9	39.4	39.4
3-4 AM	23	0.0	14	0.0	1500	23	0	14	0.50	0	63.8	61.1	41.9	39.6	39.6
4-5 AM	57	0.0	32	0.0	1500	57	0	32	0.50	0	63.8	61.0	41.8	39.4	39.4
5-6 AM	115	0.0	66	0.0	1500	115	0	66	0.51	0	63.7	60.9	41.6	38.9	38.9
6-7 AM	138	0.0	80	0.0	1500	138	0	80	0.51	0	63.7	60.9	41.5	38.8	38.8
7-8 AM	170	0.0	98	0.0	1500	170	0	98	0.51	0	63.6	60.8	41.4	38.5	38.5
8-9 AM	263	0.0	152	0.0	1500	263	0	152	0.52	0	63.4	60.5	41.1	37.9	37.9
9-10 AM	381	0.0	221	0.0	1500	381	0	221	0.53	0	63.2	60.3	40.7	37.0	37.0
10-11 AM	495	0.0	287	0.0	1500	495	0	287	0.55	0	63.0	60.1	40.3	36.2	36.2
11A-NOON	498	0.0	288	0.0	1500	498	0	288	0.55	0	63.0	60.1	40.3	36.1	36.1
NOON-1PM	485	0.0	280	0.0	1500	485	0	280	0.54	0	63.0	60.1	40.4	36.3	36.3
1-2 PM	494	0.0	286	0.0	1500	494	0	286	0.55	0	63.0	60.1	40.3	36.2	36.2
2-3 PM	387	0.0	224	0.0	1500	387	0	224	0.54	0	63.2	60.3	40.7	36.9	36.9
3-4 PM	387	0.0	224	0.0	1500	387	0	224	0.54	0	63.2	60.3	40.7	36.9	36.9
4-5 PM	373	0.0	216	0.0	1500	373	0	216	0.53	0	63.2	60.3	40.7	37.1	37.1
5-6 PM	350	0.0	202	0.0	1500	350	0	202	0.53	0	63.3	60.4	40.8	37.3	37.3
6-7 PM	307	0.0	178	0.0	1500	307	0	178	0.53	0	63.3	60.5	40.9	37.5	37.5
7-8 PM	233	0.0	135	0.0	1500	233	0	135	0.52	0	63.5	60.6	41.2	38.1	38.1
8-9 PM	258	0.0	149	0.0	1500	258	0	149	0.52	0	63.4	60.6	41.1	37.9	37.9
9-10 PM	226	0.0	131	0.0	1500	226	0	131	0.52	0	63.5	60.7	41.2	38.1	38.1
10-11 PM	164	0.0	95	0.0	1500	164	0	95	0.51	0	63.6	60.8	41.4	38.6	38.6
11PM-MID	108	0.0	62	0.0	1500	108	0	62	0.51	0	63.7	60.9	41.6	39.0	39.0

----- SITE BREAKDOWN DELAYS -----	
BREAKDOWN DURATION (MINS)	0
RANGE OF QUEUE DELAY - MIN	0.0
(VEH-H) MAX	0.0
RANGE OF DIVN DELAY - MIN	0.0
(VEH-H) MAX	0.0
AV BREAKDOWNS PER DAY	0.00
AV QUEUE DELAY/DAY (VEH-H)	0.0
AV DIVN DELAY/DAY (VEH-H)	0.0
AV TOTAL DELAY/DAY (VEH-H)	0.0

----- SITE ACCIDENT DELAYS -----	
ACCIDENT DURATION (MINS)	0
RANGE OF QUEUE DELAY - MIN	0.0
(VEH-H) MAX	0.0
RANGE OF DIVN DELAY - MIN	0.0
(VEH-H) MAX	0.0
AV ACCIDENTS PER DAY	0.00
AV QUEUE DELAY/DAY (VEH-H)	0.0
AV DIVN DELAY/DAY (VEH-H)	0.0
AV TOTAL DELAY/DAY (VEH-H)	0.0

AVERAGE ACCIDENT NUMBERS (PIA/DAY)	
MAIN ROUTE WITHOUT WORKS	0.0119
MAIN ROUTE WITH WORKS	0.0126
DIVERSION	0.0615

PIA: Personal Injury Accidents

IMPACTS ON ROAD USERS	
ROAD USER COSTS PER DAY (DOLLARS)	\$831
CONGESTED HOURS PER DAY*	0

*Delays Exceeding 15 Minutes

**USH 41: STH 22 TO USH 141
CONTINUOUS (24 HOUR) CLOSURE
DIVERSION ROUTE: STH 141 - STH 22**

AUGUST
Analyzed for 2009
Construction Season

GRAPHICAL REPRESENTATION OF TRAFFIC MODEL INPUT AND OUTPUT
SATURDAY NORTHBOUND DIRECTION

