

USH 41: STH 22 TO USH 141 CONTINUOUS (24 HOUR) CLOSURE DIVERSION ROUTE: STH 141 - STH 22	AUGUST
	Analyzed for 2009 Construction Season

SUMMARY OF TRAFFIC MODEL OUTPUT
MON-THUR SOUTHBOUND DIRECTION

TIME OF DAY	FLOWS AND CAPACITY IN VEH/HR								AVERAGE SPEEDS IN MPH						
	MAIN ROUTE		ALTERNATE ROUTE		SITE CAPA CITY	FLOW MAIN ROUTE	FLOW DIVER -TING	TOTAL DIVN FLOW	AV.DEL PER VEH (MINS)	AVERAGE QUEUE (VEH)	MAIN ROUTE		ALTERNATE ROUTE		
	DEMAND FLOW	PCT HEAVY	NORMAL FLOW	PCT HEAVY							WITHOUT WORK ZN	WITH WORK ZN	SITE	WITHOUT WORK ZN	WITH WORK ZN
MID-1 AM	30	0.0	18	0.0	1500	30	0	18	0.50	0	63.8	61.1	41.9	39.5	39.5
1-2 AM	22	0.0	13	0.0	1500	22	0	13	0.50	0	63.8	61.1	41.9	39.6	39.6
2-3 AM	25	0.0	15	0.0	1500	25	0	15	0.50	0	63.8	61.1	41.9	39.6	39.6
3-4 AM	42	0.0	24	0.0	1500	42	0	24	0.50	0	63.8	61.0	41.9	39.4	39.4
4-5 AM	127	0.0	73	0.0	1500	127	0	73	0.51	0	63.7	60.9	41.5	38.8	38.8
5-6 AM	280	0.0	162	0.0	1500	280	0	162	0.53	0	63.4	60.5	41.0	37.8	37.8
6-7 AM	330	0.0	190	0.0	1500	330	0	190	0.53	0	63.3	60.4	40.9	37.4	37.4
7-8 AM	364	0.0	210	0.0	1500	364	0	210	0.53	0	63.2	60.4	40.7	37.1	37.1
8-9 AM	307	0.0	178	0.0	1500	307	0	178	0.53	0	63.3	60.5	40.9	37.5	37.5
9-10 AM	345	0.0	200	0.0	1500	345	0	200	0.53	0	63.3	60.4	40.8	37.3	37.3
10-11 AM	385	0.0	223	0.0	1500	385	0	223	0.54	0	63.2	60.3	40.7	36.9	36.9
11A-NOON	364	0.0	210	0.0	1500	364	0	210	0.53	0	63.2	60.4	40.7	37.1	37.1
NOON-1PM	378	0.0	219	0.0	1500	378	0	219	0.53	0	63.2	60.3	40.7	37.0	37.0
1-2 PM	392	0.0	227	0.0	1500	392	0	227	0.54	0	63.2	60.3	40.7	36.9	36.9
2-3 PM	391	0.0	226	0.0	1500	391	0	226	0.54	0	63.2	60.3	40.7	36.9	36.9
3-4 PM	414	0.0	240	0.0	1500	414	0	240	0.54	0	63.2	60.2	40.6	36.8	36.8
4-5 PM	460	0.0	266	0.0	1500	460	0	266	0.54	0	63.0	60.1	40.4	36.5	36.5
5-6 PM	401	0.0	231	0.0	1500	401	0	231	0.54	0	63.2	60.2	40.6	36.9	36.9
6-7 PM	269	0.0	156	0.0	1500	269	0	156	0.52	0	63.4	60.5	41.0	37.8	37.8
7-8 PM	193	0.0	111	0.0	1500	193	0	111	0.52	0	63.5	60.7	41.3	38.4	38.4
8-9 PM	152	0.0	88	0.0	1500	152	0	88	0.51	0	63.6	60.8	41.5	38.6	38.6
9-10 PM	114	0.0	66	0.0	1500	114	0	66	0.51	0	63.7	60.9	41.6	38.9	38.9
10-11 PM	71	0.0	41	0.0	1500	71	0	41	0.51	0	63.8	61.0	41.7	39.2	39.2
11PM-MID	44	0.0	25	0.0	1500	44	0	25	0.50	0	63.8	61.0	41.9	39.4	39.4

----- SITE BREAKDOWN DELAYS -----	
BREAKDOWN DURATION (MINS)	0
RANGE OF QUEUE DELAY - MIN	0.0
(VEH-H) MAX	0.0
RANGE OF DIVN DELAY - MIN	0.0
(VEH-H) MAX	0.0
AV BREAKDOWNS PER DAY	0.00
AV QUEUE DELAY/DAY (VEH-H)	0.0
AV DIVN DELAY/DAY (VEH-H)	0.0
AV TOTAL DELAY/DAY (VEH-H)	0.0

----- SITE ACCIDENT DELAYS -----	
ACCIDENT DURATION (MINS)	0
RANGE OF QUEUE DELAY - MIN	0.0
(VEH-H) MAX	0.0
RANGE OF DIVN DELAY - MIN	0.0
(VEH-H) MAX	0.0
AV ACCIDENTS PER DAY	0.00
AV QUEUE DELAY/DAY (VEH-H)	0.0
AV DIVN DELAY/DAY (VEH-H)	0.0
AV TOTAL DELAY/DAY (VEH-H)	0.0

AVERAGE ACCIDENT NUMBERS (PIA/DAY)	
MAIN ROUTE WITHOUT WORKS	0.0115
MAIN ROUTE WITH WORKS	0.0121
DIVERSION	0.0593

PIA: Personal Injury Accidents

IMPACTS ON ROAD USERS	
ROAD USER COSTS PER DAY (DOLLARS)	\$633
CONGESTED HOURS PER DAY*	0

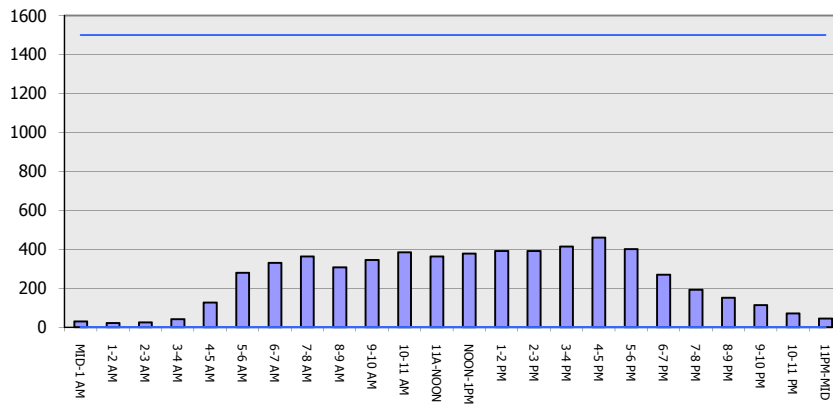
*Delays Exceeding 15 Minutes

**USH 41: STH 22 TO USH 141
CONTINUOUS (24 HOUR) CLOSURE
DIVERSION ROUTE: STH 141 - STH 22**

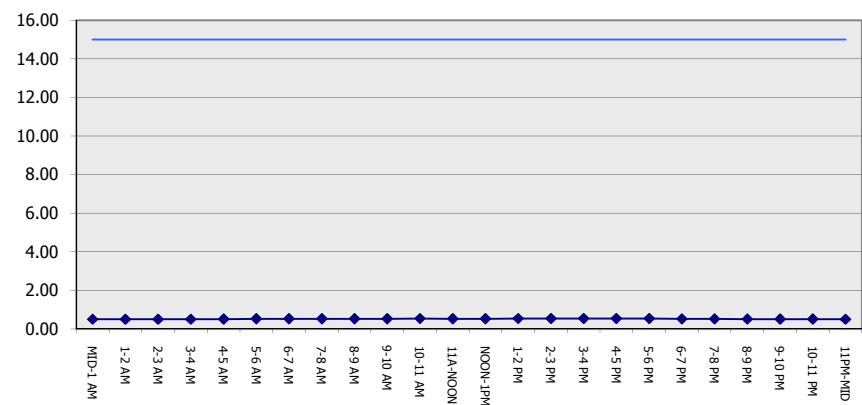
AUGUST
Analyzed for 2009
Construction Season

GRAPHICAL REPRESENTATION OF TRAFFIC MODEL INPUT AND OUTPUT
MON-THUR SOUTHBOUND DIRECTION

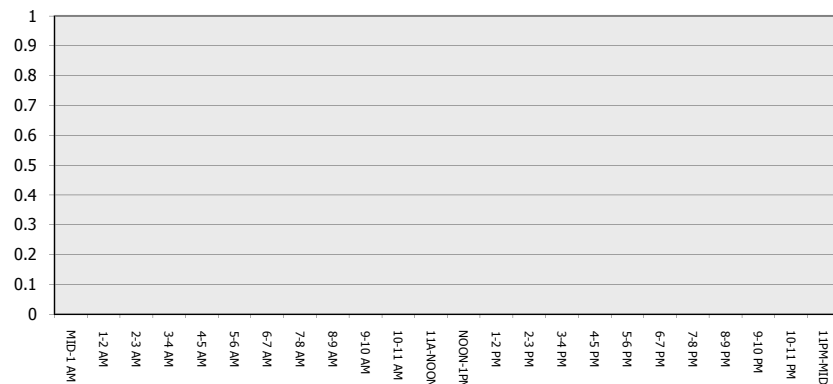
Main Route - Traffic Demand (Vehicles Per Hour)



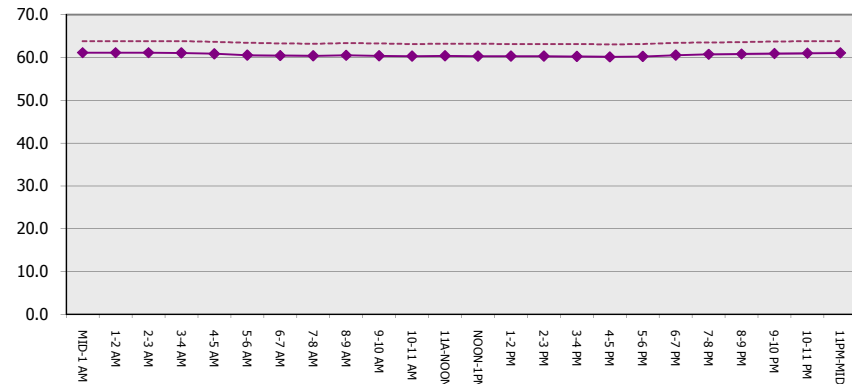
Main Route Average Delay Per Vehicle (Minutes)



Main Route - Average Queue Length (Vehicles)



Main Route - Average Speed (MPH)



USH 41: STH 22 TO USH 141 CONTINUOUS (24 HOUR) CLOSURE DIVERSION ROUTE: STH 141 - STH 22	AUGUST
	Analyzed for 2009 Construction Season

SUMMARY OF TRAFFIC MODEL OUTPUT
MON-THUR NORTHBOUND DIRECTION

TIME OF DAY	FLOWS AND CAPACITY IN VEH/HR								AVERAGE SPEEDS IN MPH						
	MAIN		DIVERSION		SITE CAPA CITY	FLOW MAIN ROUTE	FLOW DIVER -TING	TOTAL DIVN FLOW	AV.DEL PER VEH (MINS)	AVERAGE QUEUE (VEH)	MAIN ROUTE		SITE	ALTERNATE ROUTE	
	DEMAND FLOW	PCT HEAVY	NORMAL FLOW	PCT HEAVY							WITHOUT WORK ZN	WITH WORK ZN		WITHOUT WORK ZN	WITH WORK ZN
MID-1 AM	53	0.0	30	0.0	1500	53	0	30	0.50	0	63.8	61.0	41.8	39.4	39.4
1-2 AM	35	0.0	21	0.0	1500	35	0	21	0.50	0	63.8	61.0	41.9	39.5	39.5
2-3 AM	33	0.0	19	0.0	1500	33	0	19	0.50	0	63.8	61.0	41.9	39.5	39.5
3-4 AM	32	0.0	19	0.0	1500	32	0	19	0.50	0	63.8	61.1	41.9	39.5	39.5
4-5 AM	72	0.0	42	0.0	1500	72	0	42	0.51	0	63.8	61.0	41.7	39.2	39.2
5-6 AM	166	0.0	96	0.0	1500	166	0	96	0.51	0	63.6	60.8	41.4	38.6	38.6
6-7 AM	274	0.0	158	0.0	1500	274	0	158	0.52	0	63.4	60.5	41.0	37.8	37.8
7-8 AM	328	0.0	189	0.0	1500	328	0	189	0.53	0	63.3	60.4	40.9	37.4	37.4
8-9 AM	312	0.0	180	0.0	1500	312	0	180	0.53	0	63.3	60.5	40.9	37.5	37.5
9-10 AM	331	0.0	191	0.0	1500	331	0	191	0.53	0	63.3	60.4	40.9	37.4	37.4
10-11 AM	339	0.0	196	0.0	1500	339	0	196	0.53	0	63.3	60.4	40.8	37.3	37.3
11A-NOON	338	0.0	195	0.0	1500	338	0	195	0.53	0	63.3	60.4	40.9	37.3	37.3
NOON-1PM	350	0.0	202	0.0	1500	350	0	202	0.53	0	63.3	60.4	40.8	37.3	37.3
1-2 PM	375	0.0	217	0.0	1500	375	0	217	0.53	0	63.2	60.3	40.7	37.1	37.1
2-3 PM	419	0.0	242	0.0	1500	419	0	242	0.54	0	63.1	60.2	40.6	36.8	36.8
3-4 PM	478	0.0	275	0.0	1500	478	0	275	0.54	0	63.0	60.1	40.4	36.3	36.3
4-5 PM	546	0.0	315	0.0	1500	546	0	315	0.55	0	62.9	59.9	40.1	35.8	35.8
5-6 PM	515	0.0	297	0.0	1500	515	0	297	0.55	0	63.0	60.0	40.2	36.1	36.1
6-7 PM	360	0.0	207	0.0	1500	360	0	207	0.53	0	63.2	60.4	40.7	37.2	37.2
7-8 PM	267	0.0	154	0.0	1500	267	0	154	0.52	0	63.4	60.5	41.0	37.8	37.8
8-9 PM	228	0.0	131	0.0	1500	228	0	131	0.52	0	63.5	60.7	41.2	38.1	38.1
9-10 PM	181	0.0	105	0.0	1500	181	0	105	0.52	0	63.6	60.7	41.4	38.4	38.4
10-11 PM	131	0.0	75	0.0	1500	131	0	75	0.51	0	63.7	60.9	41.5	38.8	38.8
11PM-MID	106	0.0	62	0.0	1500	106	0	62	0.51	0	63.7	60.9	41.6	39.0	39.0

----- SITE BREAKDOWN DELAYS -----	
BREAKDOWN DURATION (MINS)	0
RANGE OF QUEUE DELAY - MIN	0.0
(VEH-H) MAX	0.0
RANGE OF DIVN DELAY - MIN	0.0
(VEH-H) MAX	0.0
AV BREAKDOWNS PER DAY	0.00
AV QUEUE DELAY/DAY (VEH-H)	0.0
AV DIVN DELAY/DAY (VEH-H)	0.0
AV TOTAL DELAY/DAY (VEH-H)	0.0

----- SITE ACCIDENT DELAYS -----	
ACCIDENT DURATION (MINS)	0
RANGE OF QUEUE DELAY - MIN	0.0
(VEH-H) MAX	0.0
RANGE OF DIVN DELAY - MIN	0.0
(VEH-H) MAX	0.0
AV ACCIDENTS PER DAY	0.00
AV QUEUE DELAY/DAY (VEH-H)	0.0
AV DIVN DELAY/DAY (VEH-H)	0.0
AV TOTAL DELAY/DAY (VEH-H)	0.0

AVERAGE ACCIDENT NUMBERS (PIA/DAY)	
MAIN ROUTE WITHOUT WORKS	0.0122
MAIN ROUTE WITH WORKS	0.0129
DIVERSION	0.0629

PIA: Personal Injury Accidents

IMPACTS ON ROAD USERS	
ROAD USER COSTS PER DAY (DOLLARS)	\$673
CONGESTED HOURS PER DAY*	0

*Delays Exceeding 15 Minutes

**USH 41: STH 22 TO USH 141
CONTINUOUS (24 HOUR) CLOSURE
DIVERSION ROUTE: STH 141 - STH 22**

AUGUST
Analyzed for 2009
Construction Season

GRAPHICAL REPRESENTATION OF TRAFFIC MODEL INPUT AND OUTPUT
MON-THUR NORTHBOUND DIRECTION

