

USH 41: STH 22 TO USH 141 CONTINUOUS (24 HOUR) CLOSURE DIVERSION ROUTE: STH 141 - STH 22	AUGUST
	Analyzed for 2009 Construction Season

SUMMARY OF TRAFFIC MODEL OUTPUT

FRIDAY SOUTHBOUND DIRECTION

TIME OF DAY	FLOWS AND CAPACITY IN VEH/HR								AVERAGE SPEEDS IN MPH						
	MAIN ROUTE		ALTERNATE ROUTE		SITE CAPA CITY	FLOW MAIN ROUTE	FLOW DIVER -TING	TOTAL DIVN FLOW	AV.DEL PER VEH (MINS)	AVERAGE QUEUE (VEH)	MAIN ROUTE		ALTERNATE ROUTE		
	DEMAND FLOW	PCT HEAVY	NORMAL FLOW	PCT HEAVY							WITHOUT WORK ZN	WITH WORK ZN	SITE	WITHOUT WORK ZN	WITH WORK ZN
MID-1 AM	25	0.0	15	0.0	1500	25	0	15	0.50	0	63.8	61.1	41.9	39.6	39.6
1-2 AM	29	0.0	17	0.0	1500	29	0	17	0.50	0	63.8	61.1	41.9	39.6	39.6
2-3 AM	31	0.0	18	0.0	1500	31	0	18	0.50	0	63.8	61.1	41.9	39.5	39.5
3-4 AM	51	0.0	29	0.0	1500	51	0	29	0.50	0	63.8	61.0	41.8	39.4	39.4
4-5 AM	114	0.0	66	0.0	1500	114	0	66	0.51	0	63.7	60.9	41.6	38.9	38.9
5-6 AM	220	0.0	128	0.0	1500	220	0	128	0.52	0	63.5	60.7	41.2	38.1	38.1
6-7 AM	305	0.0	177	0.0	1500	305	0	177	0.53	0	63.3	60.5	40.9	37.6	37.6
7-8 AM	350	0.0	202	0.0	1500	350	0	202	0.53	0	63.3	60.4	40.8	37.3	37.3
8-9 AM	325	0.0	187	0.0	1500	325	0	187	0.53	0	63.3	60.4	40.9	37.4	37.4
9-10 AM	437	0.0	253	0.0	1500	437	0	253	0.54	0	63.1	60.2	40.5	36.6	36.6
10-11 AM	426	0.0	246	0.0	1500	426	0	246	0.54	0	63.1	60.2	40.6	36.7	36.7
11A-NOON	442	0.0	255	0.0	1500	442	0	255	0.54	0	63.1	60.2	40.5	36.6	36.6
NOON-1PM	419	0.0	242	0.0	1500	419	0	242	0.54	0	63.1	60.2	40.6	36.8	36.8
1-2 PM	462	0.0	268	0.0	1500	462	0	268	0.54	0	63.0	60.1	40.4	36.4	36.4
2-3 PM	458	0.0	265	0.0	1500	458	0	265	0.54	0	63.0	60.1	40.4	36.5	36.5
3-4 PM	488	0.0	283	0.0	1500	488	0	283	0.54	0	63.0	60.1	40.3	36.2	36.2
4-5 PM	486	0.0	280	0.0	1500	486	0	280	0.54	0	63.0	60.1	40.4	36.3	36.3
5-6 PM	467	0.0	270	0.0	1500	467	0	270	0.54	0	63.0	60.1	40.4	36.4	36.4
6-7 PM	294	0.0	171	0.0	1500	294	0	171	0.53	0	63.3	60.5	41.0	37.6	37.6
7-8 PM	231	0.0	134	0.0	1500	231	0	134	0.52	0	63.5	60.6	41.2	38.1	38.1
8-9 PM	156	0.0	90	0.0	1500	156	0	90	0.51	0	63.6	60.8	41.4	38.6	38.6
9-10 PM	117	0.0	67	0.0	1500	117	0	67	0.51	0	63.7	60.9	41.6	38.9	38.9
10-11 PM	94	0.0	54	0.0	1500	94	0	54	0.51	0	63.7	60.9	41.7	39.1	39.1
11PM-MID	50	0.0	28	0.0	1500	50	0	28	0.50	0	63.8	61.0	41.8	39.4	39.4

----- SITE BREAKDOWN DELAYS -----	
BREAKDOWN DURATION (MINS)	0
RANGE OF QUEUE DELAY - MIN	0.0
(VEH-H) MAX	0.0
RANGE OF DIVN DELAY - MIN	0.0
(VEH-H) MAX	0.0
AV BREAKDOWNS PER DAY	0.00
AV QUEUE DELAY/DAY (VEH-H)	0.0
AV DIVN DELAY/DAY (VEH-H)	0.0
AV TOTAL DELAY/DAY (VEH-H)	0.0

----- SITE ACCIDENT DELAYS -----	
ACCIDENT DURATION (MINS)	0
RANGE OF QUEUE DELAY - MIN	0.0
(VEH-H) MAX	0.0
RANGE OF DIVN DELAY - MIN	0.0
(VEH-H) MAX	0.0
AV ACCIDENTS PER DAY	0.00
AV QUEUE DELAY/DAY (VEH-H)	0.0
AV DIVN DELAY/DAY (VEH-H)	0.0
AV TOTAL DELAY/DAY (VEH-H)	0.0

AVERAGE ACCIDENT NUMBERS (PIA/DAY)	
MAIN ROUTE WITHOUT WORKS	0.0126
MAIN ROUTE WITH WORKS	0.0133
DIVERSION	0.0651

PIA: Personal Injury Accidents

IMPACTS ON ROAD USERS	
ROAD USER COSTS PER DAY (DOLLARS)	\$720
CONGESTED HOURS PER DAY*	0

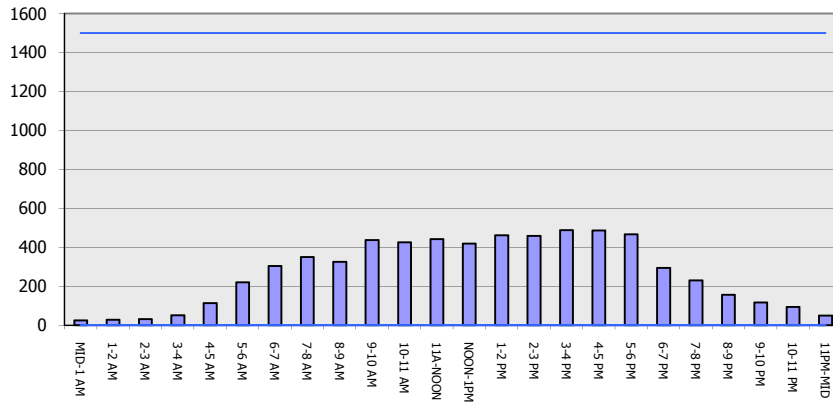
*Delays Exceeding 15 Minutes

**USH 41: STH 22 TO USH 141
CONTINUOUS (24 HOUR) CLOSURE
DIVERSION ROUTE: STH 141 - STH 22**

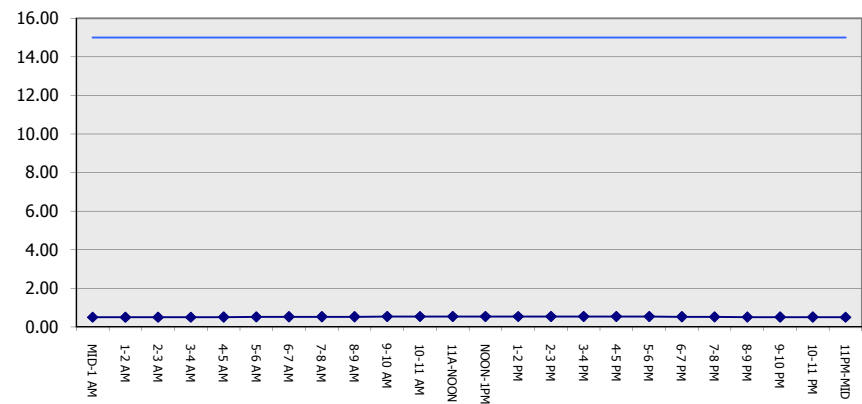
AUGUST
Analyzed for 2009
Construction Season

GRAPHICAL REPRESENTATION OF TRAFFIC MODEL INPUT AND OUTPUT
FRIDAY SOUTHBOUND DIRECTION

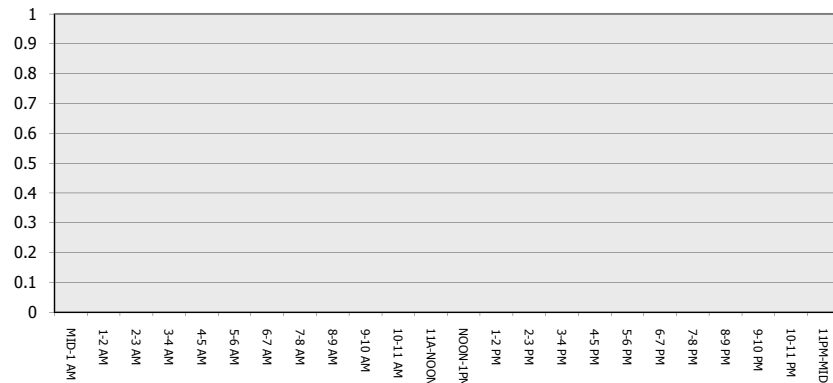
Main Route - Traffic Demand (Vehicles Per Hour)



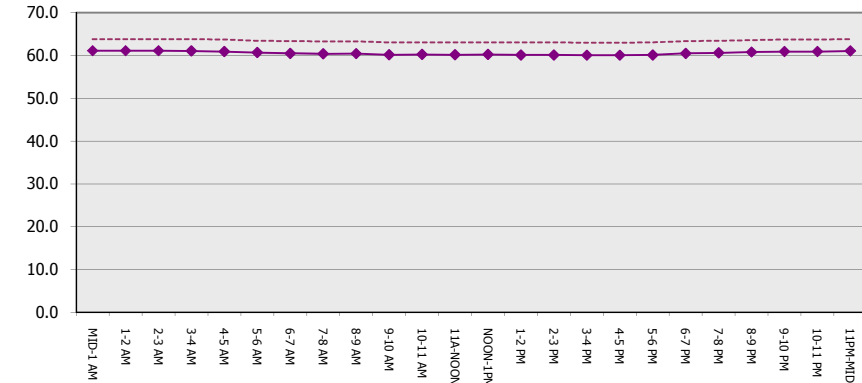
Main Route Average Delay Per Vehicle (Minutes)



Main Route - Average Queue Length (Vehicles)



Main Route - Average Speed (MPH)



USH 41: STH 22 TO USH 141 CONTINUOUS (24 HOUR) CLOSURE DIVERSION ROUTE: STH 141 - STH 22	AUGUST
	Analyzed for 2009 Construction Season

SUMMARY OF TRAFFIC MODEL OUTPUT

FRIDAY NORTHBOUND DIRECTION

TIME OF DAY	FLOWS AND CAPACITY IN VEH/HR								AVERAGE SPEEDS IN MPH						
	MAIN		DIVERSION		SITE CAPA CITY	FLOW MAIN ROUTE	FLOW DIVER -TING	TOTAL DIVN FLOW	AV.DEL PER VEH (MINS)	AVERAGE QUEUE (VEH)	MAIN ROUTE		SITE	ALTERNATE ROUTE	
	DEMAND FLOW	PCT HEAVY	NORMAL FLOW	PCT HEAVY							WITHOUT WORK ZN	WITH WORK ZN		WITHOUT WORK ZN	WITH WORK ZN
MID-1 AM	62	0.0	36	0.0	1500	62	0	36	0.50	0	63.8	61.0	41.8	39.3	39.3
1-2 AM	50	0.0	28	0.0	1500	50	0	28	0.50	0	63.8	61.0	41.8	39.4	39.4
2-3 AM	40	0.0	23	0.0	1500	40	0	23	0.50	0	63.8	61.0	41.9	39.4	39.4
3-4 AM	46	0.0	26	0.0	1500	46	0	26	0.50	0	63.8	61.0	41.9	39.4	39.4
4-5 AM	73	0.0	42	0.0	1500	73	0	42	0.51	0	63.8	61.0	41.7	39.2	39.2
5-6 AM	184	0.0	106	0.0	1500	184	0	106	0.52	0	63.5	60.7	41.4	38.4	38.4
6-7 AM	253	0.0	147	0.0	1500	253	0	147	0.52	0	63.4	60.6	41.1	37.9	37.9
7-8 AM	312	0.0	181	0.0	1500	312	0	181	0.53	0	63.3	60.5	40.9	37.5	37.5
8-9 AM	352	0.0	203	0.0	1500	352	0	203	0.53	0	63.2	60.4	40.8	37.2	37.2
9-10 AM	399	0.0	230	0.0	1500	399	0	230	0.54	0	63.2	60.3	40.6	36.9	36.9
10-11 AM	429	0.0	248	0.0	1500	429	0	248	0.54	0	63.1	60.2	40.6	36.6	36.6
11A-NOON	457	0.0	265	0.0	1500	457	0	265	0.54	0	63.0	60.1	40.4	36.5	36.5
NOON-1PM	488	0.0	283	0.0	1500	488	0	283	0.54	0	63.0	60.1	40.3	36.2	36.2
1-2 PM	551	0.0	318	0.0	1500	551	0	318	0.55	0	62.8	59.9	40.1	35.8	35.8
2-3 PM	559	0.0	323	0.0	1500	559	0	323	0.55	0	62.8	59.9	40.1	35.7	35.7
3-4 PM	616	0.0	356	0.0	1500	616	0	356	0.56	0	62.8	59.8	39.9	35.3	35.3
4-5 PM	709	0.0	410	0.0	1500	709	0	410	0.57	0	62.6	59.6	39.6	34.7	34.7
5-6 PM	683	0.0	395	0.0	1500	683	0	395	0.56	0	62.7	59.7	39.7	34.8	34.8
6-7 PM	460	0.0	266	0.0	1500	460	0	266	0.54	0	63.0	60.1	40.4	36.5	36.5
7-8 PM	408	0.0	235	0.0	1500	408	0	235	0.54	0	63.2	60.2	40.6	36.8	36.8
8-9 PM	315	0.0	182	0.0	1500	315	0	182	0.53	0	63.3	60.4	40.9	37.5	37.5
9-10 PM	280	0.0	162	0.0	1500	280	0	162	0.53	0	63.4	60.5	41.0	37.8	37.8
10-11 PM	183	0.0	106	0.0	1500	183	0	106	0.52	0	63.6	60.7	41.4	38.4	38.4
11PM-MID	166	0.0	96	0.0	1500	166	0	96	0.51	0	63.6	60.8	41.4	38.6	38.6

----- SITE BREAKDOWN DELAYS -----	
BREAKDOWN DURATION (MINS)	0
RANGE OF QUEUE DELAY - MIN	0.0
(VEH-H) MAX	0.0
RANGE OF DIVN DELAY - MIN	0.0
(VEH-H) MAX	0.0
AV BREAKDOWNS PER DAY	0.00
AV QUEUE DELAY/DAY (VEH-H)	0.0
AV DIVN DELAY/DAY (VEH-H)	0.0
AV TOTAL DELAY/DAY (VEH-H)	0.0

----- SITE ACCIDENT DELAYS -----	
ACCIDENT DURATION (MINS)	0
RANGE OF QUEUE DELAY - MIN	0.0
(VEH-H) MAX	0.0
RANGE OF DIVN DELAY - MIN	0.0
(VEH-H) MAX	0.0
AV ACCIDENTS PER DAY	0.00
AV QUEUE DELAY/DAY (VEH-H)	0.0
AV DIVN DELAY/DAY (VEH-H)	0.0
AV TOTAL DELAY/DAY (VEH-H)	0.0

AVERAGE ACCIDENT NUMBERS (PIA/DAY)	
MAIN ROUTE WITHOUT WORKS	0.0157
MAIN ROUTE WITH WORKS	0.0166
DIVERSION	0.0811

PIA: Personal Injury Accidents

IMPACTS ON ROAD USERS	
ROAD USER COSTS PER DAY (DOLLARS)	\$913
CONGESTED HOURS PER DAY*	0

*Delays Exceeding 15 Minutes

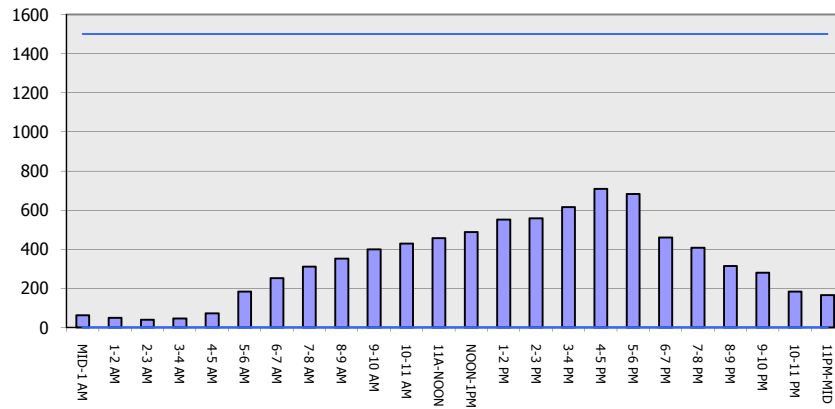
**USH 41: STH 22 TO USH 141
CONTINUOUS (24 HOUR) CLOSURE
DIVERSION ROUTE: STH 141 - STH 22**

AUGUST
Analyzed for 2009
Construction Season

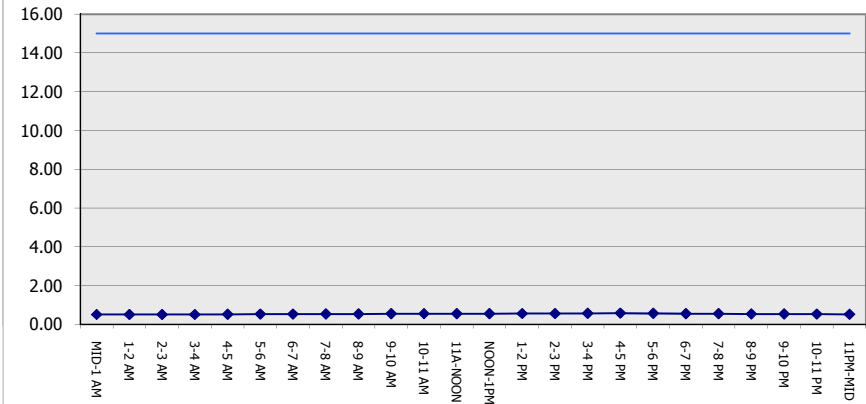
GRAPHICAL REPRESENTATION OF TRAFFIC MODEL INPUT AND OUTPUT

FRIDAY NORTHBOUND DIRECTION

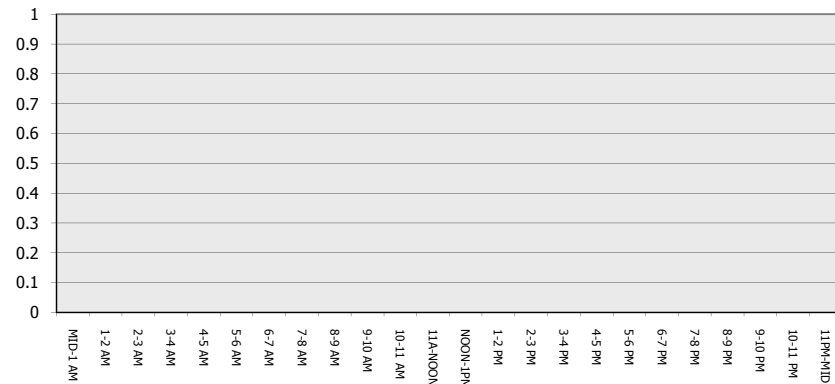
Main Route - Traffic Demand (Vehicles Per Hour)



Main Route Average Delay Per Vehicle (Minutes)



Main Route - Average Queue Length (Vehicles)



Main Route - Average Speed (MPH)

