

**USH 41: STH 22 TO USH 141
CONTINUOUS (24 HOUR) CLOSURE
DIVERSION ROUTE: STH 141 - STH 22**

MAY
Analyzed for 2009
Construction Season

SUMMARY OF TRAFFIC MODEL OUTPUT

SATURDAY SOUTHBOUND DIRECTION

TIME OF DAY	FLOWS AND CAPACITY IN VEH/HR							AVERAGE SPEEDS IN MPH							
	MAIN ROUTE		ALTERNATE ROUTE		SITE CAPA CITY	FLOW MAIN ROUTE	FLOW DIVER -TING	TOTAL DIVN FLOW	AV.DEL PER VEH (MINS)	AVERAGE QUEUE (VEH)	MAIN ROUTE		ALTERNATE ROUTE		
	DEMAND FLOW	PCT HEAVY	NORMAL FLOW	PCT HEAVY							WITHOUT WORK ZN	WITH WORK ZN	SITE	WITHOUT WORK ZN	WITH WORK ZN
MID-1 AM	28	0.0	17	0.0	1500	28	0	17	0.50	0	63.8	61.1	41.9	39.6	39.6
1-2 AM	19	0.0	10	0.0	1500	19	0	10	0.50	0	63.8	61.1	41.9	39.6	39.6
2-3 AM	21	0.0	13	0.0	1500	21	0	13	0.50	0	63.8	61.1	41.9	39.6	39.6
3-4 AM	30	0.0	18	0.0	1500	30	0	18	0.50	0	63.8	61.1	41.9	39.5	39.5
4-5 AM	60	0.0	35	0.0	1500	60	0	35	0.50	0	63.8	61.0	41.8	39.3	39.3
5-6 AM	92	0.0	53	0.0	1500	92	0	53	0.51	0	63.7	60.9	41.7	39.1	39.1
6-7 AM	99	0.0	58	0.0	1500	99	0	58	0.51	0	63.7	60.9	41.7	39.0	39.0
7-8 AM	195	0.0	113	0.0	1500	195	0	113	0.52	0	63.5	60.7	41.3	38.3	38.3
8-9 AM	283	0.0	163	0.0	1500	283	0	163	0.53	0	63.4	60.5	41.0	37.7	37.7
9-10 AM	361	0.0	209	0.0	1500	361	0	209	0.53	0	63.2	60.4	40.7	37.1	37.1
10-11 AM	425	0.0	246	0.0	1500	425	0	246	0.54	0	63.1	60.2	40.6	36.7	36.7
11A-NOON	381	0.0	220	0.0	1500	381	0	220	0.53	0	63.2	60.3	40.7	37.0	37.0
NOON-1PM	368	0.0	212	0.0	1500	368	0	212	0.53	0	63.2	60.4	40.7	37.1	37.1
1-2 PM	335	0.0	194	0.0	1500	335	0	194	0.53	0	63.3	60.4	40.9	37.3	37.3
2-3 PM	325	0.0	187	0.0	1500	325	0	187	0.53	0	63.3	60.4	40.9	37.4	37.4
3-4 PM	283	0.0	163	0.0	1500	283	0	163	0.53	0	63.4	60.5	41.0	37.7	37.7
4-5 PM	265	0.0	153	0.0	1500	265	0	153	0.52	0	63.4	60.5	41.0	37.8	37.8
5-6 PM	259	0.0	150	0.0	1500	259	0	150	0.52	0	63.4	60.5	41.1	37.9	37.9
6-7 PM	204	0.0	117	0.0	1500	204	0	117	0.52	0	63.5	60.7	41.3	38.3	38.3
7-8 PM	189	0.0	109	0.0	1500	189	0	109	0.52	0	63.5	60.7	41.4	38.4	38.4
8-9 PM	140	0.0	81	0.0	1500	140	0	81	0.51	0	63.7	60.9	41.5	38.8	38.8
9-10 PM	102	0.0	60	0.0	1500	102	0	60	0.51	0	63.7	60.9	41.7	39.0	39.0
10-11 PM	82	0.0	47	0.0	1500	82	0	47	0.51	0	63.8	61.0	41.7	39.2	39.2
11PM-MID	55	0.0	31	0.0	1500	55	0	31	0.50	0	63.8	61.0	41.8	39.4	39.4

----- SITE BREAKDOWN DELAYS -----	
BREAKDOWN DURATION (MINS)	0
RANGE OF QUEUE DELAY - MIN	0.0
(VEH-H) MAX	0.0
RANGE OF DIVN DELAY - MIN	0.0
(VEH-H) MAX	0.0
AV BREAKDOWNS PER DAY	0.00
AV QUEUE DELAY/DAY (VEH-H)	0.0
AV DIVN DELAY/DAY (VEH-H)	0.0
AV TOTAL DELAY/DAY (VEH-H)	0.0

----- SITE ACCIDENT DELAYS -----	
ACCIDENT DURATION (MINS)	0
RANGE OF QUEUE DELAY - MIN	0.0
(VEH-H) MAX	0.0
RANGE OF DIVN DELAY - MIN	0.0
(VEH-H) MAX	0.0
AV ACCIDENTS PER DAY	0.00
AV QUEUE DELAY/DAY (VEH-H)	0.0
AV DIVN DELAY/DAY (VEH-H)	0.0
AV TOTAL DELAY/DAY (VEH-H)	0.0

AVERAGE ACCIDENT NUMBERS (PIA/DAY)	
MAIN ROUTE WITHOUT WORKS	0.0089
MAIN ROUTE WITH WORKS	0.0094
DIVERSION	0.0462

PIA: Personal Injury Accidents

IMPACTS ON ROAD USERS	
ROAD USER COSTS PER DAY (DOLLARS)	\$615
CONGESTED HOURS PER DAY*	0

*Delays Exceeding 15 Minutes

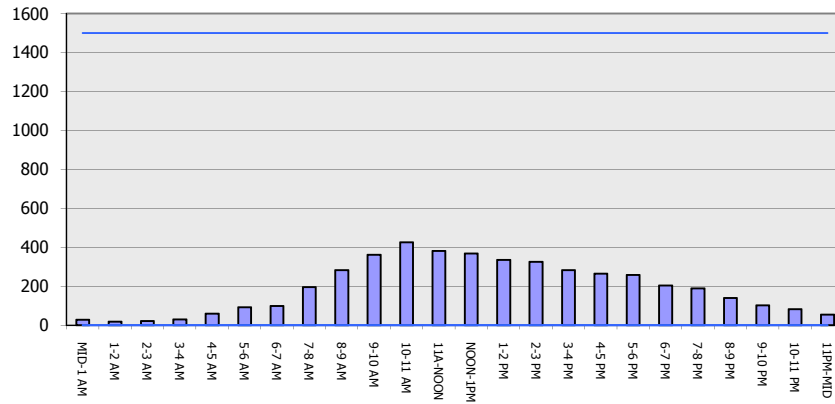
**USH 41: STH 22 TO USH 141
CONTINUOUS (24 HOUR) CLOSURE
DIVERSION ROUTE: STH 141 - STH 22**

MAY
Analyzed for 2009
Construction Season

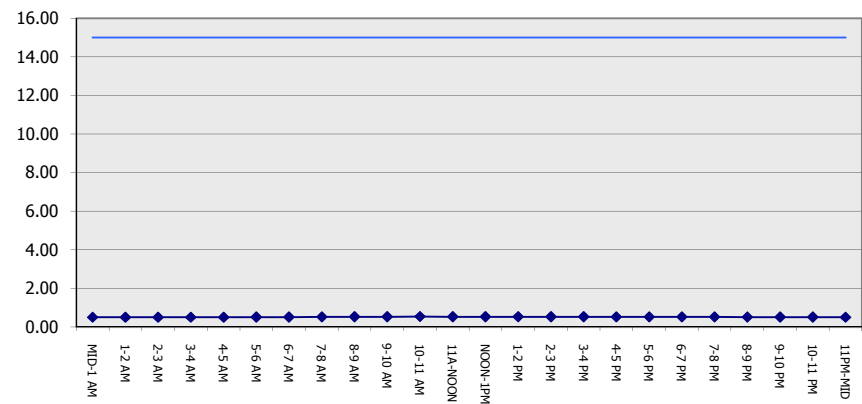
GRAPHICAL REPRESENTATION OF TRAFFIC MODEL INPUT AND OUTPUT

SATURDAY SOUTHBOUND DIRECTION

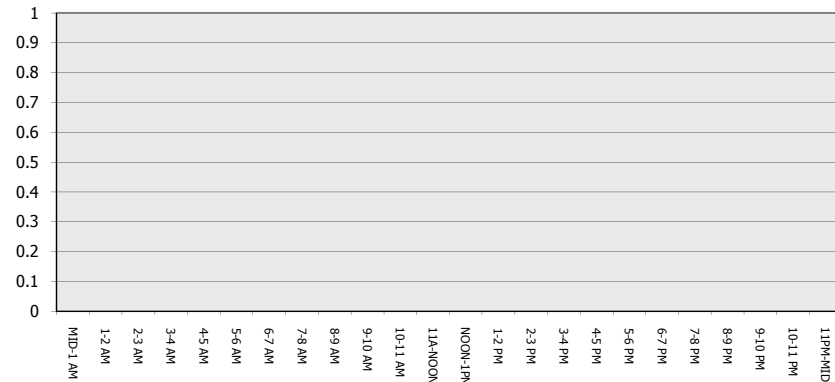
Main Route - Traffic Demand (Vehicles Per Hour)



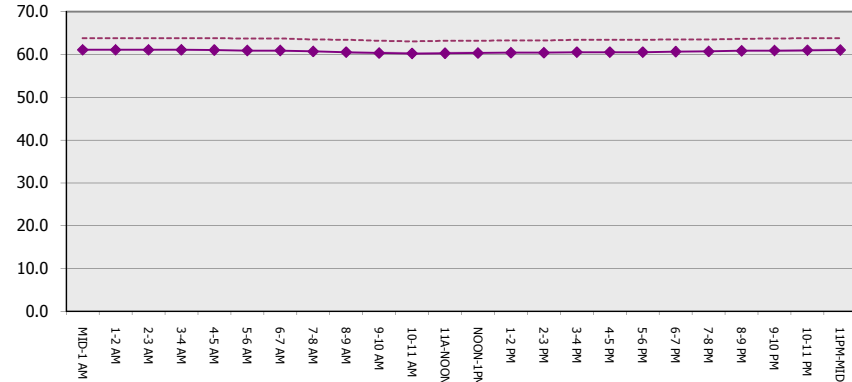
Main Route Average Delay Per Vehicle (Minutes)



Main Route - Average Queue Length (Vehicles)



Main Route - Average Speed (MPH)



USH 41: STH 22 TO USH 141 CONTINUOUS (24 HOUR) CLOSURE DIVERSION ROUTE: STH 141 - STH 22	MAY
	Analyzed for 2009 Construction Season

SUMMARY OF TRAFFIC MODEL OUTPUT

SATURDAY NORTHBOUND DIRECTION

TIME OF DAY	FLOWS AND CAPACITY IN VEH/HR								AVERAGE SPEEDS IN MPH						
	MAIN		DIVERSION		SITE CAPA CITY	FLOW MAIN ROUTE	FLOW DIVER -TING	TOTAL DIVN FLOW	AV.DEL PER VEH (MINS)	AVERAGE QUEUE (VEH)	MAIN ROUTE		SITE	ALTERNATE ROUTE	
	DEMAND FLOW	PCT HEAVY	NORMAL FLOW	PCT HEAVY							WITHOUT WORK ZN	WITH WORK ZN		WITHOUT WORK ZN	WITH WORK ZN
MID-1 AM	67	0.0	39	0.0	1500	67	0	39	0.51	0	63.8	61.0	41.8	39.2	39.2
1-2 AM	48	0.0	27	0.0	1500	48	0	27	0.50	0	63.8	61.0	41.9	39.4	39.4
2-3 AM	27	0.0	16	0.0	1500	27	0	16	0.50	0	63.8	61.1	41.9	39.6	39.6
3-4 AM	38	0.0	22	0.0	1500	38	0	22	0.50	0	63.8	61.0	41.9	39.5	39.5
4-5 AM	43	0.0	24	0.0	1500	43	0	24	0.50	0	63.8	61.0	41.9	39.4	39.4
5-6 AM	61	0.0	36	0.0	1500	61	0	36	0.50	0	63.8	61.0	41.8	39.3	39.3
6-7 AM	120	0.0	69	0.0	1500	120	0	69	0.51	0	63.7	60.9	41.6	38.9	38.9
7-8 AM	158	0.0	91	0.0	1500	158	0	91	0.51	0	63.6	60.8	41.4	38.6	38.6
8-9 AM	221	0.0	128	0.0	1500	221	0	128	0.52	0	63.5	60.7	41.2	38.1	38.1
9-10 AM	279	0.0	161	0.0	1500	279	0	161	0.53	0	63.4	60.5	41.0	37.8	37.8
10-11 AM	335	0.0	194	0.0	1500	335	0	194	0.53	0	63.3	60.4	40.9	37.3	37.3
11A-NOON	317	0.0	183	0.0	1500	317	0	183	0.53	0	63.3	60.4	40.9	37.4	37.4
NOON-1PM	347	0.0	201	0.0	1500	347	0	201	0.53	0	63.3	60.4	40.8	37.3	37.3
1-2 PM	343	0.0	198	0.0	1500	343	0	198	0.53	0	63.3	60.4	40.8	37.3	37.3
2-3 PM	350	0.0	202	0.0	1500	350	0	202	0.53	0	63.3	60.4	40.8	37.3	37.3
3-4 PM	361	0.0	208	0.0	1500	361	0	208	0.53	0	63.2	60.4	40.7	37.1	37.1
4-5 PM	333	0.0	193	0.0	1500	333	0	193	0.53	0	63.3	60.4	40.9	37.3	37.3
5-6 PM	330	0.0	190	0.0	1500	330	0	190	0.53	0	63.3	60.4	40.9	37.4	37.4
6-7 PM	300	0.0	174	0.0	1500	300	0	174	0.53	0	63.3	60.5	41.0	37.6	37.6
7-8 PM	229	0.0	133	0.0	1500	229	0	133	0.52	0	63.5	60.7	41.2	38.1	38.1
8-9 PM	176	0.0	103	0.0	1500	176	0	103	0.52	0	63.6	60.7	41.4	38.4	38.4
9-10 PM	148	0.0	86	0.0	1500	148	0	86	0.51	0	63.7	60.8	41.5	38.7	38.7
10-11 PM	107	0.0	62	0.0	1500	107	0	62	0.51	0	63.7	60.9	41.6	39.0	39.0
11PM-MID	76	0.0	44	0.0	1500	76	0	44	0.51	0	63.8	61.0	41.7	39.2	39.2

----- SITE BREAKDOWN DELAYS -----	
BREAKDOWN DURATION (MINS)	0
RANGE OF QUEUE DELAY - MIN	0.0
(VEH-H) MAX	0.0
RANGE OF DIVN DELAY - MIN	0.0
(VEH-H) MAX	0.0
AV BREAKDOWNS PER DAY	0.00
AV QUEUE DELAY/DAY (VEH-H)	0.0
AV DIVN DELAY/DAY (VEH-H)	0.0
AV TOTAL DELAY/DAY (VEH-H)	0.0

----- SITE ACCIDENT DELAYS -----	
ACCIDENT DURATION (MINS)	0
RANGE OF QUEUE DELAY - MIN	0.0
(VEH-H) MAX	0.0
RANGE OF DIVN DELAY - MIN	0.0
(VEH-H) MAX	0.0
AV ACCIDENTS PER DAY	0.00
AV QUEUE DELAY/DAY (VEH-H)	0.0
AV DIVN DELAY/DAY (VEH-H)	0.0
AV TOTAL DELAY/DAY (VEH-H)	0.0

AVERAGE ACCIDENT NUMBERS (PIA/DAY)	
MAIN ROUTE WITHOUT WORKS	0.0094
MAIN ROUTE WITH WORKS	0.0099
DIVERSION	0.0484

PIA: Personal Injury Accidents

IMPACTS ON ROAD USERS	
ROAD USER COSTS PER DAY (DOLLARS)	\$643
CONGESTED HOURS PER DAY*	0

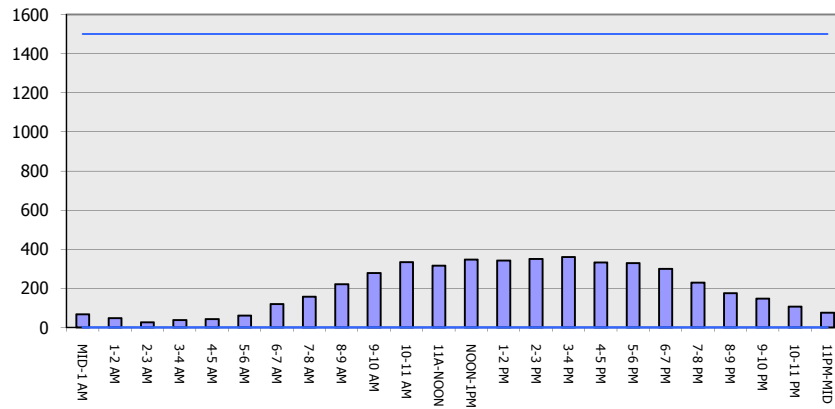
*Delays Exceeding 15 Minutes

**USH 41: STH 22 TO USH 141
CONTINUOUS (24 HOUR) CLOSURE
DIVERSION ROUTE: STH 141 - STH 22**

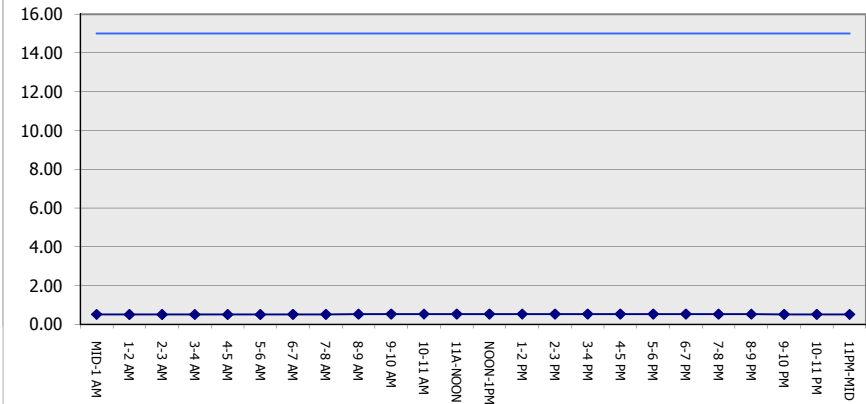
MAY
Analyzed for 2009
Construction Season

GRAPHICAL REPRESENTATION OF TRAFFIC MODEL INPUT AND OUTPUT
SATURDAY NORTHBOUND DIRECTION

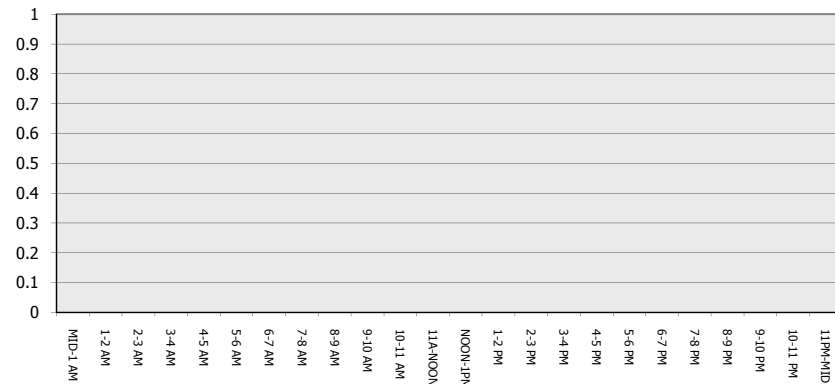
Main Route - Traffic Demand (Vehicles Per Hour)



Main Route Average Delay Per Vehicle (Minutes)



Main Route - Average Queue Length (Vehicles)



Main Route - Average Speed (MPH)

