

**USH 41: STH 22 TO USH 141
CONTINUOUS (24 HOUR) CLOSURE
DIVERSION ROUTE: STH 141 - STH 22**

MAY
Analyzed for 2009
Construction Season

SUMMARY OF TRAFFIC MODEL OUTPUT

MON-THUR SOUTHBOUND DIRECTION

TIME OF DAY	FLOWS AND CAPACITY IN VEH/HR						AVERAGE SPEEDS IN MPH								
	MAIN ROUTE		ALTERNATE ROUTE		SITE CAPA CITY	FLOW MAIN ROUTE	FLOW DIVER -TING	TOTAL DIVN FLOW	AV.DEL PER VEH (MINS)	AVERAGE QUEUE (VEH)	MAIN ROUTE		ALTERNATE ROUTE		
	DEMAND FLOW	PCT HEAVY	NORMAL FLOW	PCT HEAVY							WITHOUT WORK ZN	WITH WORK ZN	SITE	WITHOUT WORK ZN	WITH WORK ZN
MID-1 AM	25	0.0	15	0.0	1500	25	0	15	0.50	0	63.8	61.1	41.9	39.6	39.6
1-2 AM	20	0.0	12	0.0	1500	20	0	12	0.50	0	63.8	61.1	41.9	39.6	39.6
2-3 AM	21	0.0	13	0.0	1500	21	0	13	0.50	0	63.8	61.1	41.9	39.6	39.6
3-4 AM	37	0.0	21	0.0	1500	37	0	21	0.50	0	63.8	61.0	41.9	39.5	39.5
4-5 AM	126	0.0	72	0.0	1500	126	0	72	0.51	0	63.7	60.9	41.5	38.9	38.9
5-6 AM	253	0.0	146	0.0	1500	253	0	146	0.52	0	63.4	60.6	41.1	37.9	37.9
6-7 AM	363	0.0	210	0.0	1500	363	0	210	0.53	0	63.2	60.4	40.7	37.1	37.1
7-8 AM	377	0.0	219	0.0	1500	377	0	219	0.53	0	63.2	60.3	40.7	37.0	37.0
8-9 AM	317	0.0	184	0.0	1500	317	0	184	0.53	0	63.3	60.4	40.9	37.4	37.4
9-10 AM	322	0.0	186	0.0	1500	322	0	186	0.53	0	63.3	60.4	40.9	37.4	37.4
10-11 AM	317	0.0	183	0.0	1500	317	0	183	0.53	0	63.3	60.4	40.9	37.4	37.4
11A-NOON	309	0.0	179	0.0	1500	309	0	179	0.53	0	63.3	60.5	40.9	37.5	37.5
NOON-1PM	336	0.0	195	0.0	1500	336	0	195	0.53	0	63.3	60.4	40.9	37.3	37.3
1-2 PM	333	0.0	194	0.0	1500	333	0	194	0.53	0	63.3	60.4	40.9	37.3	37.3
2-3 PM	355	0.0	205	0.0	1500	355	0	205	0.53	0	63.2	60.4	40.8	37.2	37.2
3-4 PM	403	0.0	233	0.0	1500	403	0	233	0.54	0	63.2	60.2	40.6	36.8	36.8
4-5 PM	433	0.0	250	0.0	1500	433	0	250	0.54	0	63.1	60.2	40.5	36.6	36.6
5-6 PM	357	0.0	207	0.0	1500	357	0	207	0.53	0	63.2	60.4	40.7	37.2	37.2
6-7 PM	225	0.0	131	0.0	1500	225	0	131	0.52	0	63.5	60.7	41.2	38.1	38.1
7-8 PM	145	0.0	84	0.0	1500	145	0	84	0.51	0	63.7	60.9	41.5	38.7	38.7
8-9 PM	104	0.0	61	0.0	1500	104	0	61	0.51	0	63.7	60.9	41.6	39.0	39.0
9-10 PM	81	0.0	47	0.0	1500	81	0	47	0.51	0	63.8	61.0	41.7	39.2	39.2
10-11 PM	56	0.0	32	0.0	1500	56	0	32	0.50	0	63.8	61.0	41.8	39.4	39.4
11PM-MID	37	0.0	21	0.0	1500	37	0	21	0.50	0	63.8	61.0	41.9	39.5	39.5

----- SITE BREAKDOWN DELAYS -----	
BREAKDOWN DURATION (MINS)	0
RANGE OF QUEUE DELAY - MIN	0.0
(VEH-H) MAX	0.0
RANGE OF DIVN DELAY - MIN	0.0
(VEH-H) MAX	0.0
AV BREAKDOWNS PER DAY	0.00
AV QUEUE DELAY/DAY (VEH-H)	0.0
AV DIVN DELAY/DAY (VEH-H)	0.0
AV TOTAL DELAY/DAY (VEH-H)	0.0

----- SITE ACCIDENT DELAYS -----	
ACCIDENT DURATION (MINS)	0
RANGE OF QUEUE DELAY - MIN	0.0
(VEH-H) MAX	0.0
RANGE OF DIVN DELAY - MIN	0.0
(VEH-H) MAX	0.0
AV ACCIDENTS PER DAY	0.00
AV QUEUE DELAY/DAY (VEH-H)	0.0
AV DIVN DELAY/DAY (VEH-H)	0.0
AV TOTAL DELAY/DAY (VEH-H)	0.0

AVERAGE ACCIDENT NUMBERS (PIA/DAY)	
MAIN ROUTE WITHOUT WORKS	0.0104
MAIN ROUTE WITH WORKS	0.0110
DIVERSION	0.0539

PIA: Personal Injury Accidents

IMPACTS ON ROAD USERS	
ROAD USER COSTS PER DAY (DOLLARS)	\$568
CONGESTED HOURS PER DAY*	0

*Delays Exceeding 15 Minutes

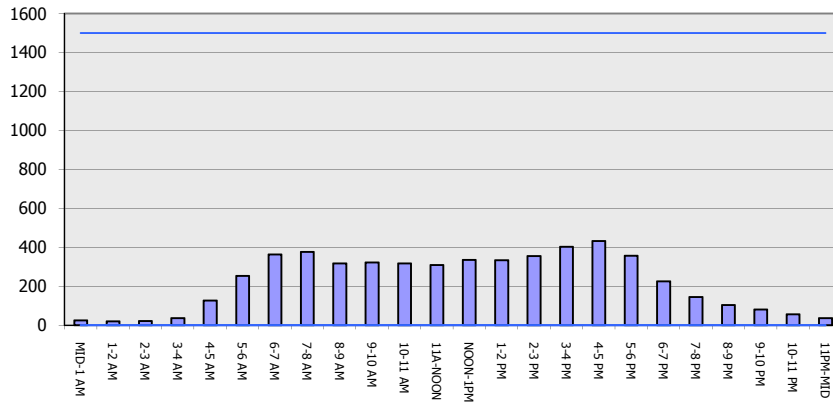
**USH 41: STH 22 TO USH 141
CONTINUOUS (24 HOUR) CLOSURE
DIVERSION ROUTE: STH 141 - STH 22**

MAY
Analyzed for 2009
Construction Season

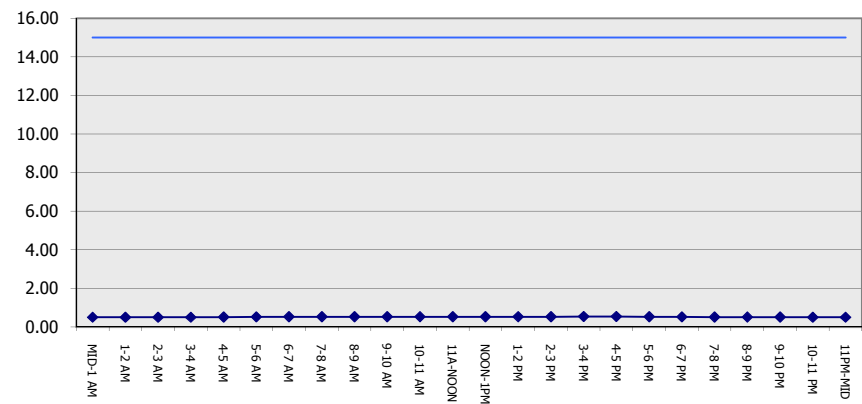
GRAPHICAL REPRESENTATION OF TRAFFIC MODEL INPUT AND OUTPUT

MON-THUR SOUTHBOUND DIRECTION

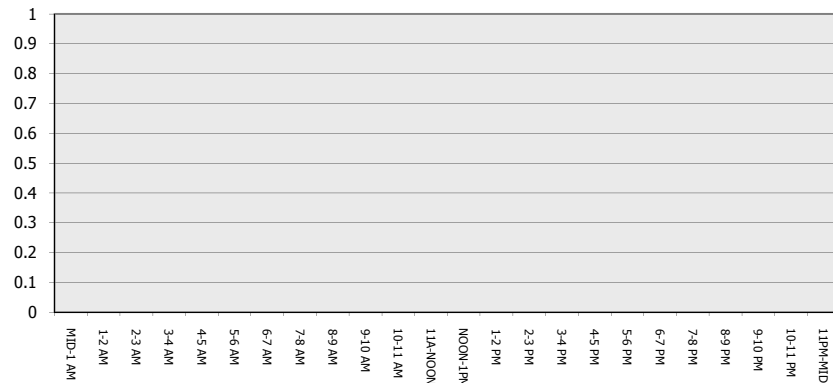
Main Route - Traffic Demand (Vehicles Per Hour)



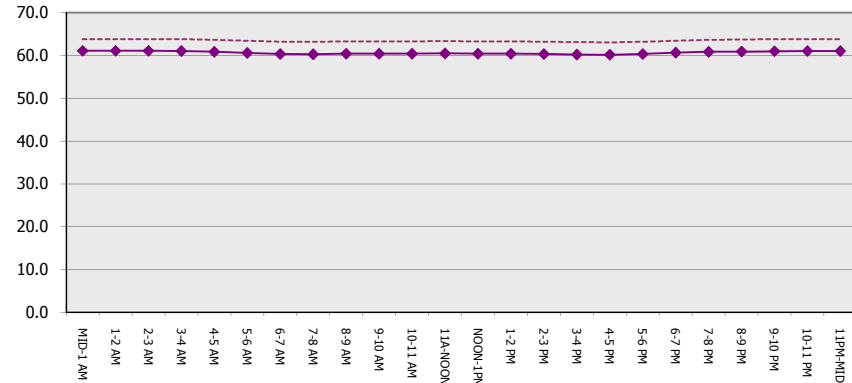
Main Route Average Delay Per Vehicle (Minutes)



Main Route - Average Queue Length (Vehicles)



Main Route - Average Speed (MPH)



USH 41: STH 22 TO USH 141 CONTINUOUS (24 HOUR) CLOSURE DIVERSION ROUTE: STH 141 - STH 22	MAY
	Analyzed for 2009 Construction Season

SUMMARY OF TRAFFIC MODEL OUTPUT

MON-THUR NORTHBOUND DIRECTION

TIME OF DAY	FLOWS AND CAPACITY IN VEH/HR								AVERAGE SPEEDS IN MPH						
	MAIN		DIVERSION		SITE CAPA CITY	FLOW MAIN ROUTE	FLOW DIVER -TING	TOTAL DIVN FLOW	AV.DEL PER VEH (MINS)	AVERAGE QUEUE (VEH)	MAIN ROUTE		SITE	ALTERNATE ROUTE	
	DEMAND FLOW	PCT HEAVY	NORMAL FLOW	PCT HEAVY							WITHOUT WORK ZN	WITH WORK ZN		WITHOUT WORK ZN	WITH WORK ZN
MID-1 AM	40	0.0	23	0.0	1500	40	0	23	0.50	0	63.8	61.0	41.9	39.4	39.4
1-2 AM	29	0.0	17	0.0	1500	29	0	17	0.50	0	63.8	61.1	41.9	39.6	39.6
2-3 AM	26	0.0	16	0.0	1500	26	0	16	0.50	0	63.8	61.1	41.9	39.6	39.6
3-4 AM	30	0.0	18	0.0	1500	30	0	18	0.50	0	63.8	61.1	41.9	39.5	39.5
4-5 AM	76	0.0	44	0.0	1500	76	0	44	0.51	0	63.8	61.0	41.7	39.2	39.2
5-6 AM	147	0.0	85	0.0	1500	147	0	85	0.51	0	63.7	60.8	41.5	38.7	38.7
6-7 AM	264	0.0	153	0.0	1500	264	0	153	0.52	0	63.4	60.5	41.1	37.8	37.8
7-8 AM	335	0.0	194	0.0	1500	335	0	194	0.53	0	63.3	60.4	40.9	37.3	37.3
8-9 AM	287	0.0	165	0.0	1500	287	0	165	0.53	0	63.3	60.5	41.0	37.7	37.7
9-10 AM	263	0.0	152	0.0	1500	263	0	152	0.52	0	63.4	60.5	41.1	37.9	37.9
10-11 AM	275	0.0	159	0.0	1500	275	0	159	0.52	0	63.4	60.5	41.0	37.8	37.8
11A-NOON	268	0.0	155	0.0	1500	268	0	155	0.52	0	63.4	60.5	41.0	37.8	37.8
NOON-1PM	285	0.0	165	0.0	1500	285	0	165	0.53	0	63.3	60.5	41.0	37.7	37.7
1-2 PM	306	0.0	178	0.0	1500	306	0	178	0.53	0	63.3	60.5	40.9	37.5	37.5
2-3 PM	356	0.0	207	0.0	1500	356	0	207	0.53	0	63.2	60.4	40.8	37.2	37.2
3-4 PM	441	0.0	256	0.0	1500	441	0	256	0.54	0	63.1	60.2	40.5	36.6	36.6
4-5 PM	472	0.0	274	0.0	1500	472	0	274	0.54	0	63.0	60.1	40.4	36.3	36.3
5-6 PM	427	0.0	247	0.0	1500	427	0	247	0.54	0	63.1	60.2	40.6	36.7	36.7
6-7 PM	328	0.0	190	0.0	1500	328	0	190	0.53	0	63.3	60.4	40.9	37.4	37.4
7-8 PM	224	0.0	130	0.0	1500	224	0	130	0.52	0	63.5	60.7	41.2	38.1	38.1
8-9 PM	201	0.0	116	0.0	1500	201	0	116	0.52	0	63.5	60.7	41.3	38.3	38.3
9-10 PM	146	0.0	85	0.0	1500	146	0	85	0.51	0	63.7	60.8	41.5	38.7	38.7
10-11 PM	98	0.0	57	0.0	1500	98	0	57	0.51	0	63.7	60.9	41.7	39.1	39.1
11PM-MID	80	0.0	47	0.0	1500	80	0	47	0.51	0	63.8	61.0	41.7	39.2	39.2

----- SITE BREAKDOWN DELAYS -----	
BREAKDOWN DURATION (MINS)	0
RANGE OF QUEUE DELAY - MIN	0.0
(VEH-H) MAX	0.0
RANGE OF DIVN DELAY - MIN	0.0
(VEH-H) MAX	0.0
AV BREAKDOWNS PER DAY	0.00
AV QUEUE DELAY/DAY (VEH-H)	0.0
AV DIVN DELAY/DAY (VEH-H)	0.0
AV TOTAL DELAY/DAY (VEH-H)	0.0

----- SITE ACCIDENT DELAYS -----	
ACCIDENT DURATION (MINS)	0
RANGE OF QUEUE DELAY - MIN	0.0
(VEH-H) MAX	0.0
RANGE OF DIVN DELAY - MIN	0.0
(VEH-H) MAX	0.0
AV ACCIDENTS PER DAY	0.00
AV QUEUE DELAY/DAY (VEH-H)	0.0
AV DIVN DELAY/DAY (VEH-H)	0.0
AV TOTAL DELAY/DAY (VEH-H)	0.0

AVERAGE ACCIDENT NUMBERS (PIA/DAY)	
MAIN ROUTE WITHOUT WORKS	0.0105
MAIN ROUTE WITH WORKS	0.0111
DIVERSION	0.0545

PIA: Personal Injury Accidents

IMPACTS ON ROAD USERS	
ROAD USER COSTS PER DAY (DOLLARS)	\$572
CONGESTED HOURS PER DAY*	0

*Delays Exceeding 15 Minutes

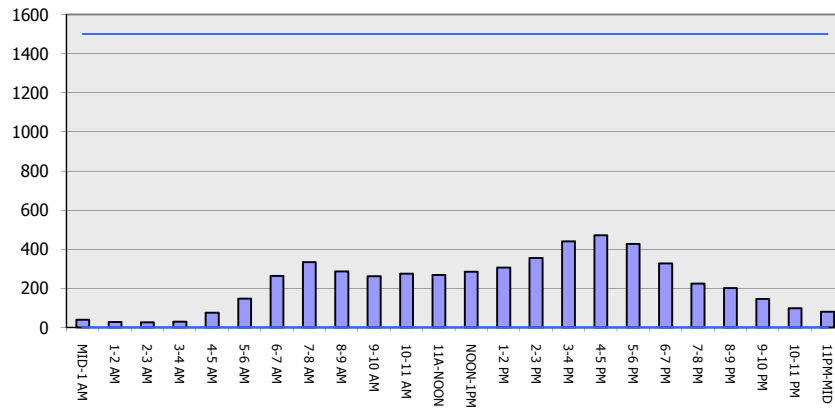
**USH 41: STH 22 TO USH 141
CONTINUOUS (24 HOUR) CLOSURE
DIVERSION ROUTE: STH 141 - STH 22**

MAY
Analyzed for 2009
Construction Season

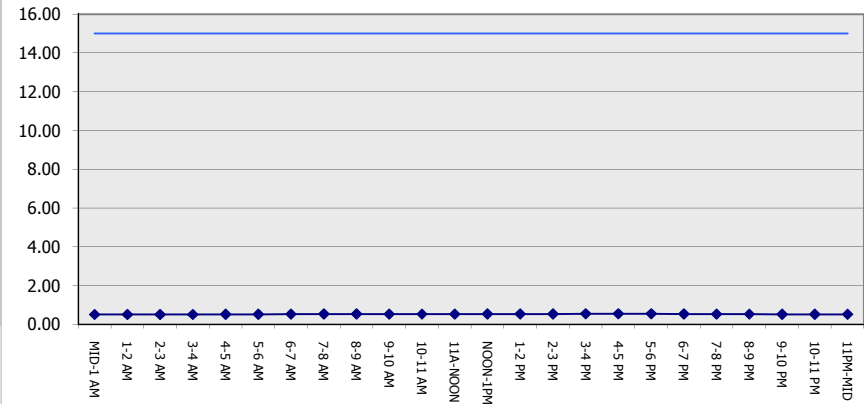
GRAPHICAL REPRESENTATION OF TRAFFIC MODEL INPUT AND OUTPUT

MON-THUR NORTHBOUND DIRECTION

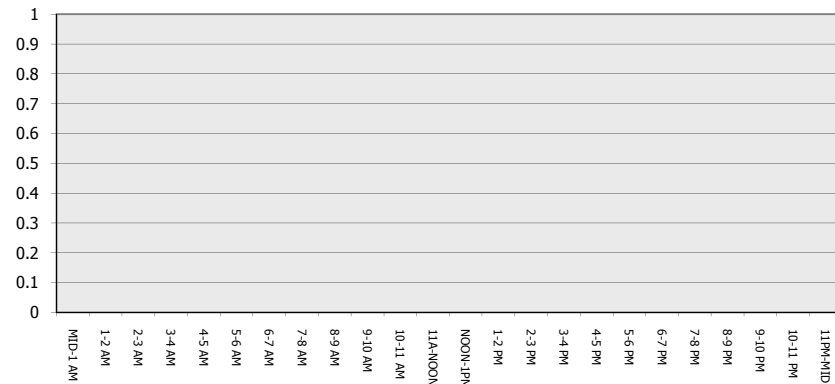
Main Route - Traffic Demand (Vehicles Per Hour)



Main Route Average Delay Per Vehicle (Minutes)



Main Route - Average Queue Length (Vehicles)



Main Route - Average Speed (MPH)

