

USH 41: STH 22 TO USH 141 CONTINUOUS (24 HOUR) CLOSURE DIVERSION ROUTE: STH 141 - STH 22	MAY
	Analyzed for 2009 Construction Season

SUMMARY OF TRAFFIC MODEL OUTPUT

FRIDAY SOUTHBOUND DIRECTION

TIME OF DAY	FLOWS AND CAPACITY IN VEH/HR							AVERAGE SPEEDS IN MPH							
	MAIN ROUTE		ALTERNATE ROUTE		SITE CAPA CITY	FLOW MAIN ROUTE	FLOW DIVER -TING	TOTAL DIVN FLOW	AV.DEL PER VEH (MINS)	AVERAGE QUEUE (VEH)	MAIN ROUTE		ALTERNATE ROUTE		
	DEMAND FLOW	PCT HEAVY	NORMAL FLOW	PCT HEAVY							WITHOUT WORK ZN	WITH WORK ZN	SITE	WITHOUT WORK ZN	WITH WORK ZN
MID-1 AM	25	0.0	15	0.0	1500	25	0	15	0.50	0	63.8	61.1	41.9	39.6	39.6
1-2 AM	24	0.0	14	0.0	1500	24	0	14	0.50	0	63.8	61.1	41.9	39.6	39.6
2-3 AM	28	0.0	17	0.0	1500	28	0	17	0.50	0	63.8	61.1	41.9	39.6	39.6
3-4 AM	31	0.0	18	0.0	1500	31	0	18	0.50	0	63.8	61.1	41.9	39.5	39.5
4-5 AM	104	0.0	61	0.0	1500	104	0	61	0.51	0	63.7	60.9	41.6	39.0	39.0
5-6 AM	211	0.0	122	0.0	1500	211	0	122	0.52	0	63.5	60.7	41.2	38.3	38.3
6-7 AM	320	0.0	185	0.0	1500	320	0	185	0.53	0	63.3	60.4	40.9	37.4	37.4
7-8 AM	343	0.0	198	0.0	1500	343	0	198	0.53	0	63.3	60.4	40.8	37.3	37.3
8-9 AM	344	0.0	199	0.0	1500	344	0	199	0.53	0	63.3	60.4	40.8	37.3	37.3
9-10 AM	352	0.0	203	0.0	1500	352	0	203	0.53	0	63.2	60.4	40.8	37.2	37.2
10-11 AM	366	0.0	211	0.0	1500	366	0	211	0.53	0	63.2	60.4	40.7	37.1	37.1
11A-NOON	346	0.0	200	0.0	1500	346	0	200	0.53	0	63.3	60.4	40.8	37.3	37.3
NOON-1PM	404	0.0	233	0.0	1500	404	0	233	0.54	0	63.2	60.2	40.6	36.8	36.8
1-2 PM	358	0.0	207	0.0	1500	358	0	207	0.53	0	63.2	60.4	40.7	37.2	37.2
2-3 PM	358	0.0	207	0.0	1500	358	0	207	0.53	0	63.2	60.4	40.7	37.2	37.2
3-4 PM	407	0.0	235	0.0	1500	407	0	235	0.54	0	63.2	60.2	40.6	36.8	36.8
4-5 PM	483	0.0	279	0.0	1500	483	0	279	0.54	0	63.0	60.1	40.4	36.3	36.3
5-6 PM	451	0.0	261	0.0	1500	451	0	261	0.54	0	63.0	60.2	40.4	36.5	36.5
6-7 PM	282	0.0	163	0.0	1500	282	0	163	0.53	0	63.4	60.5	41.0	37.7	37.7
7-8 PM	174	0.0	100	0.0	1500	174	0	100	0.52	0	63.6	60.7	41.4	38.5	38.5
8-9 PM	150	0.0	87	0.0	1500	150	0	87	0.51	0	63.6	60.8	41.5	38.7	38.7
9-10 PM	91	0.0	52	0.0	1500	91	0	52	0.51	0	63.7	60.9	41.7	39.1	39.1
10-11 PM	64	0.0	37	0.0	1500	64	0	37	0.50	0	63.8	61.0	41.8	39.3	39.3
11PM-MID	41	0.0	23	0.0	1500	41	0	23	0.50	0	63.8	61.0	41.9	39.4	39.4

----- SITE BREAKDOWN DELAYS -----	
BREAKDOWN DURATION (MINS)	0
RANGE OF QUEUE DELAY - MIN	0.0
(VEH-H) MAX	0.0
RANGE OF DIVN DELAY - MIN	0.0
(VEH-H) MAX	0.0
AV BREAKDOWNS PER DAY	0.00
AV QUEUE DELAY/DAY (VEH-H)	0.0
AV DIVN DELAY/DAY (VEH-H)	0.0
AV TOTAL DELAY/DAY (VEH-H)	0.0

----- SITE ACCIDENT DELAYS -----	
ACCIDENT DURATION (MINS)	0
RANGE OF QUEUE DELAY - MIN	0.0
(VEH-H) MAX	0.0
RANGE OF DIVN DELAY - MIN	0.0
(VEH-H) MAX	0.0
AV ACCIDENTS PER DAY	0.00
AV QUEUE DELAY/DAY (VEH-H)	0.0
AV DIVN DELAY/DAY (VEH-H)	0.0
AV TOTAL DELAY/DAY (VEH-H)	0.0

AVERAGE ACCIDENT NUMBERS (PIA/DAY)	
MAIN ROUTE WITHOUT WORKS	0.0112
MAIN ROUTE WITH WORKS	0.0118
DIVERSION	0.0579

PIA: Personal Injury Accidents

IMPACTS ON ROAD USERS	
ROAD USER COSTS PER DAY (DOLLARS)	\$632
CONGESTED HOURS PER DAY*	0

*Delays Exceeding 15 Minutes

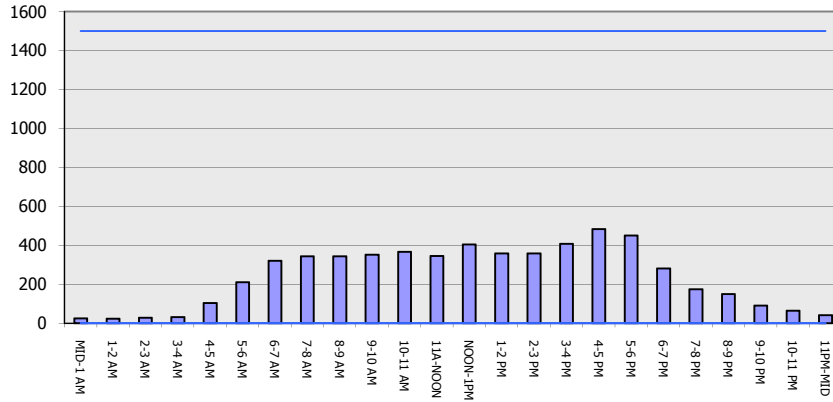
**USH 41: STH 22 TO USH 141
CONTINUOUS (24 HOUR) CLOSURE
DIVERSION ROUTE: STH 141 - STH 22**

MAY
Analyzed for 2009
Construction Season

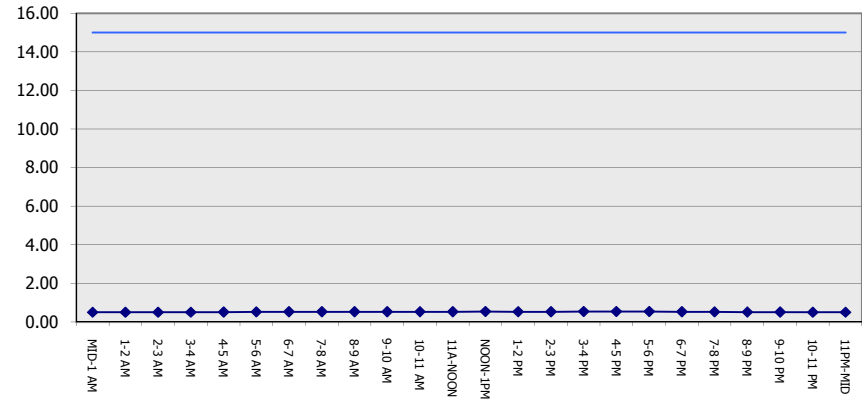
GRAPHICAL REPRESENTATION OF TRAFFIC MODEL INPUT AND OUTPUT

FRIDAY SOUTHBOUND DIRECTION

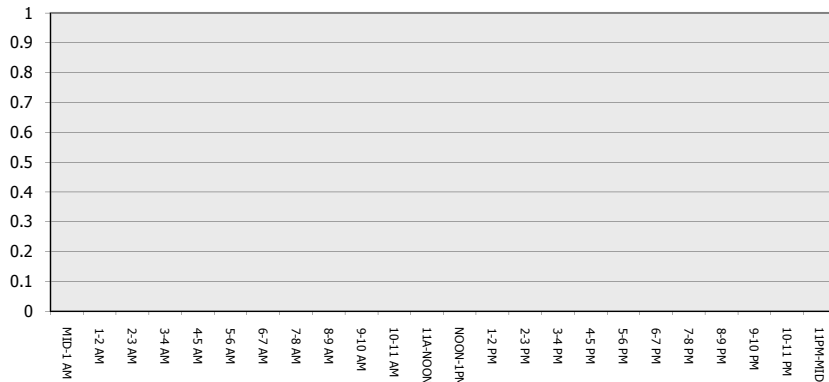
Main Route - Traffic Demand (Vehicles Per Hour)



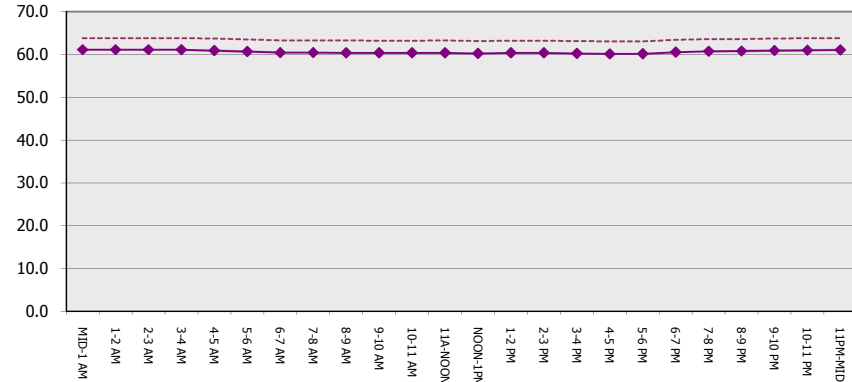
Main Route Average Delay Per Vehicle (Minutes)



Main Route - Average Queue Length (Vehicles)



Main Route - Average Speed (MPH)



USH 41: STH 22 TO USH 141 CONTINUOUS (24 HOUR) CLOSURE DIVERSION ROUTE: STH 141 - STH 22	MAY
	Analyzed for 2009 Construction Season

SUMMARY OF TRAFFIC MODEL OUTPUT

FRIDAY NORTHBOUND DIRECTION

TIME OF DAY	FLOWS AND CAPACITY IN VEH/HR								AVERAGE SPEEDS IN MPH						
	MAIN		DIVERSION		SITE CAPA CITY	FLOW MAIN ROUTE	FLOW DIVER -TING	TOTAL DIVN FLOW	AV.DEL PER VEH (MINS)	AVERAGE QUEUE (VEH)	MAIN ROUTE		SITE	ALTERNATE ROUTE	
	DEMAND FLOW	PCT HEAVY	NORMAL FLOW	PCT HEAVY							WITHOUT WORK ZN	WITH WORK ZN		WITHOUT WORK ZN	WITH WORK ZN
MID-1 AM	57	0.0	32	0.0	1500	57	0	32	0.50	0	63.8	61.0	41.8	39.4	39.4
1-2 AM	27	0.0	16	0.0	1500	27	0	16	0.50	0	63.8	61.1	41.9	39.6	39.6
2-3 AM	36	0.0	21	0.0	1500	36	0	21	0.50	0	63.8	61.0	41.9	39.5	39.5
3-4 AM	31	0.0	18	0.0	1500	31	0	18	0.50	0	63.8	61.1	41.9	39.5	39.5
4-5 AM	65	0.0	38	0.0	1500	65	0	38	0.50	0	63.8	61.0	41.8	39.2	39.2
5-6 AM	116	0.0	67	0.0	1500	116	0	67	0.51	0	63.7	60.9	41.6	38.9	38.9
6-7 AM	237	0.0	137	0.0	1500	237	0	137	0.52	0	63.5	60.6	41.2	38.1	38.1
7-8 AM	306	0.0	177	0.0	1500	306	0	177	0.53	0	63.3	60.5	40.9	37.6	37.6
8-9 AM	293	0.0	170	0.0	1500	293	0	170	0.53	0	63.3	60.5	41.0	37.6	37.6
9-10 AM	299	0.0	173	0.0	1500	299	0	173	0.53	0	63.3	60.5	41.0	37.6	37.6
10-11 AM	346	0.0	200	0.0	1500	346	0	200	0.53	0	63.3	60.4	40.8	37.3	37.3
11A-NOON	321	0.0	185	0.0	1500	321	0	185	0.53	0	63.3	60.4	40.9	37.4	37.4
NOON-1PM	375	0.0	217	0.0	1500	375	0	217	0.53	0	63.2	60.3	40.7	37.1	37.1
1-2 PM	430	0.0	249	0.0	1500	430	0	249	0.54	0	63.1	60.2	40.6	36.6	36.6
2-3 PM	533	0.0	308	0.0	1500	533	0	308	0.55	0	62.9	60.0	40.2	35.9	35.9
3-4 PM	508	0.0	294	0.0	1500	508	0	294	0.55	0	63.0	60.1	40.2	36.1	36.1
4-5 PM	642	0.0	371	0.0	1500	642	0	371	0.56	0	62.7	59.7	39.8	35.1	35.1
5-6 PM	542	0.0	313	0.0	1500	542	0	313	0.55	0	62.9	60.0	40.2	35.8	35.8
6-7 PM	422	0.0	244	0.0	1500	422	0	244	0.54	0	63.1	60.2	40.6	36.7	36.7
7-8 PM	326	0.0	188	0.0	1500	326	0	188	0.53	0	63.3	60.4	40.9	37.4	37.4
8-9 PM	230	0.0	133	0.0	1500	230	0	133	0.52	0	63.5	60.6	41.2	38.1	38.1
9-10 PM	211	0.0	122	0.0	1500	211	0	122	0.52	0	63.5	60.7	41.2	38.3	38.3
10-11 PM	135	0.0	78	0.0	1500	135	0	78	0.51	0	63.7	60.9	41.5	38.8	38.8
11PM-MID	150	0.0	87	0.0	1500	150	0	87	0.51	0	63.6	60.8	41.5	38.7	38.7

----- SITE BREAKDOWN DELAYS -----	
BREAKDOWN DURATION (MINS)	0
RANGE OF QUEUE DELAY - MIN	0.0
(VEH-H) MAX	0.0
RANGE OF DIVN DELAY - MIN	0.0
(VEH-H) MAX	0.0
AV BREAKDOWNS PER DAY	0.00
AV QUEUE DELAY/DAY (VEH-H)	0.0
AV DIVN DELAY/DAY (VEH-H)	0.0
AV TOTAL DELAY/DAY (VEH-H)	0.0

----- SITE ACCIDENT DELAYS -----	
ACCIDENT DURATION (MINS)	0
RANGE OF QUEUE DELAY - MIN	0.0
(VEH-H) MAX	0.0
RANGE OF DIVN DELAY - MIN	0.0
(VEH-H) MAX	0.0
AV ACCIDENTS PER DAY	0.00
AV QUEUE DELAY/DAY (VEH-H)	0.0
AV DIVN DELAY/DAY (VEH-H)	0.0
AV TOTAL DELAY/DAY (VEH-H)	0.0

AVERAGE ACCIDENT NUMBERS (PIA/DAY)	
MAIN ROUTE WITHOUT WORKS	0.0129
MAIN ROUTE WITH WORKS	0.0136
DIVERSION	0.0667

PIA: Personal Injury Accidents

IMPACTS ON ROAD USERS	
ROAD USER COSTS PER DAY (DOLLARS)	\$737
CONGESTED HOURS PER DAY*	0

*Delays Exceeding 15 Minutes

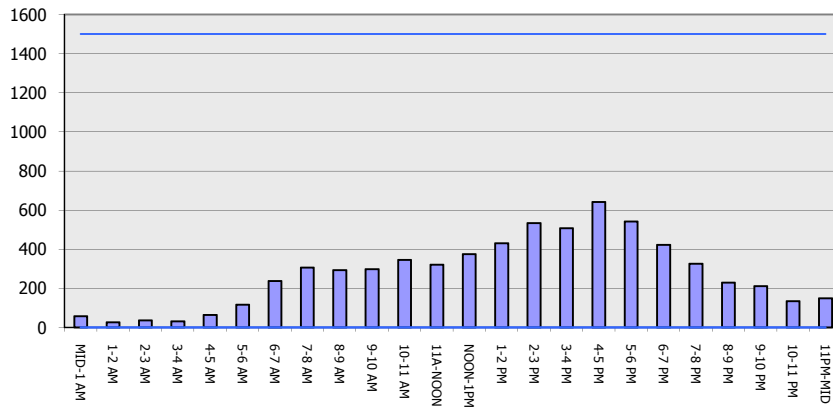
**USH 41: STH 22 TO USH 141
CONTINUOUS (24 HOUR) CLOSURE
DIVERSION ROUTE: STH 141 - STH 22**

MAY
Analyzed for 2009
Construction Season

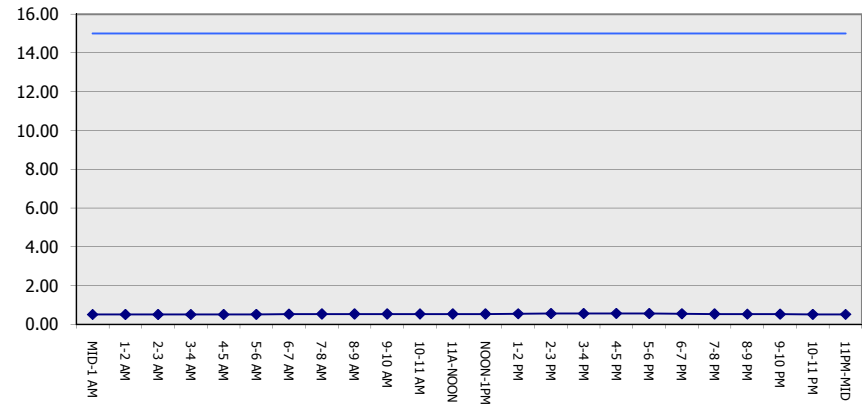
GRAPHICAL REPRESENTATION OF TRAFFIC MODEL INPUT AND OUTPUT

FRIDAY NORTHBOUND DIRECTION

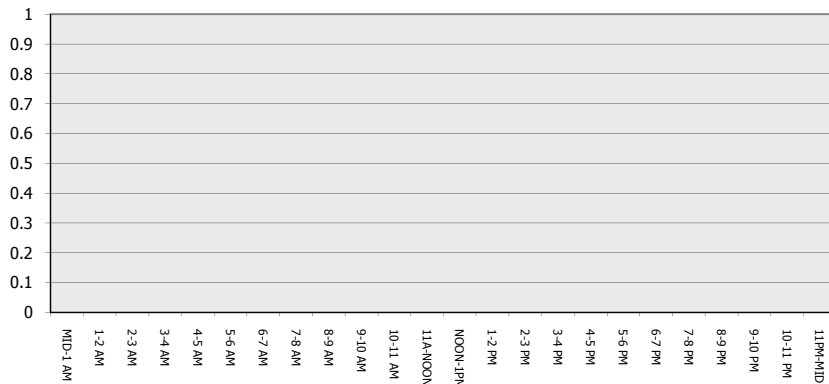
Main Route - Traffic Demand (Vehicles Per Hour)



Main Route Average Delay Per Vehicle (Minutes)



Main Route - Average Queue Length (Vehicles)



Main Route - Average Speed (MPH)

