

**USH 151: STH 22 TO USH 141 (CONTO COUNTY)  
CONTINUOUS (24 HOUR) CLOSURE  
DIVERSION ROUTE: STH 141 - STH 22**

**OCTOBER**

Analyzed for 2009  
Construction Season

**SUMMARY OF TRAFFIC MODEL OUTPUT**

FRIDAY SOUTHBOUND DIRECTION

TIME OF DAY	FLOWS AND CAPACITY IN VEH/HR						AVERAGE SPEEDS IN MPH								
	MAIN ROUTE		ALTERNATE ROUTE		SITE CAPA CITY	FLOW MAIN ROUTE	FLOW DIVER -TING	TOTAL DIVN FLOW	AV.DEL PER VEH (MINS)	AVERAGE QUEUE (VEH)	MAIN ROUTE		ALTERNATE ROUTE		
	DEMAND FLOW	PCT HEAVY	NORMAL FLOW	PCT HEAVY							WITHOUT WORK ZN	WITH WORK ZN	SITE	WITHOUT WORK ZN	WITH WORK ZN
MID-1 AM	31	0.0	18	0.0	1500	31	0	18	0.50	0	63.8	61.1	41.9	39.5	39.5
1-2 AM	24	0.0	14	0.0	1500	24	0	14	0.50	0	63.8	61.1	41.9	39.6	39.6
2-3 AM	32	0.0	19	0.0	1500	32	0	19	0.50	0	63.8	61.1	41.9	39.5	39.5
3-4 AM	41	0.0	23	0.0	1500	41	0	23	0.50	0	63.8	61.0	41.9	39.4	39.4
4-5 AM	103	0.0	60	0.0	1500	103	0	60	0.51	0	63.7	60.9	41.6	39.0	39.0
5-6 AM	208	0.0	120	0.0	1500	208	0	120	0.52	0	63.5	60.7	41.3	38.3	38.3
6-7 AM	308	0.0	178	0.0	1500	308	0	178	0.53	0	63.3	60.5	40.9	37.5	37.5
7-8 AM	375	0.0	217	0.0	1500	375	0	217	0.53	0	63.2	60.3	40.7	37.1	37.1
8-9 AM	320	0.0	185	0.0	1500	320	0	185	0.53	0	63.3	60.4	40.9	37.4	37.4
9-10 AM	369	0.0	213	0.0	1500	369	0	213	0.53	0	63.2	60.4	40.7	37.1	37.1
10-11 AM	404	0.0	233	0.0	1500	404	0	233	0.54	0	63.2	60.2	40.6	36.8	36.8
11A-NOON	397	0.0	230	0.0	1500	397	0	230	0.54	0	63.2	60.3	40.6	36.9	36.9
NOON-1PM	383	0.0	222	0.0	1500	383	0	222	0.54	0	63.2	60.3	40.7	37.0	37.0
1-2 PM	425	0.0	246	0.0	1500	425	0	246	0.54	0	63.1	60.2	40.6	36.7	36.7
2-3 PM	471	0.0	273	0.0	1500	471	0	273	0.54	0	63.0	60.1	40.4	36.3	36.3
3-4 PM	507	0.0	293	0.0	1500	507	0	293	0.55	0	63.0	60.1	40.2	36.1	36.1
4-5 PM	561	0.0	324	0.0	1500	561	0	324	0.55	0	62.8	59.9	40.1	35.7	35.7
5-6 PM	471	0.0	272	0.0	1500	471	0	272	0.54	0	63.0	60.1	40.4	36.4	36.4
6-7 PM	298	0.0	173	0.0	1500	298	0	173	0.53	0	63.3	60.5	41.0	37.6	37.6
7-8 PM	201	0.0	116	0.0	1500	201	0	116	0.52	0	63.5	60.7	41.3	38.3	38.3
8-9 PM	122	0.0	70	0.0	1500	122	0	70	0.51	0	63.7	60.9	41.5	38.9	38.9
9-10 PM	149	0.0	86	0.0	1500	149	0	86	0.51	0	63.7	60.8	41.5	38.7	38.7
10-11 PM	86	0.0	50	0.0	1500	86	0	50	0.51	0	63.7	61.0	41.7	39.1	39.1
11PM-MID	51	0.0	29	0.0	1500	51	0	29	0.50	0	63.8	61.0	41.8	39.4	39.4

*----- SITE BREAKDOWN DELAYS -----*	
BREAKDOWN DURATION (MINS)	0
RANGE OF QUEUE DELAY - MIN (VEH-H) MAX	0.0
RANGE OF DIVN DELAY - MIN (VEH-H) MAX	0.0
AV BREAKDOWNS PER DAY	0.00
AV QUEUE DELAY/DAY (VEH-H)	0.0
AV DIVN DELAY/DAY (VEH-H)	0.0
AV TOTAL DELAY/DAY (VEH-H)	0.0

*----- SITE ACCIDENT DELAYS -----*	
ACCIDENT DURATION (MINS)	0
RANGE OF QUEUE DELAY - MIN (VEH-H) MAX	0.0
RANGE OF DIVN DELAY - MIN (VEH-H) MAX	0.0
AV ACCIDENTS PER DAY	0.00
AV QUEUE DELAY/DAY (VEH-H)	0.0
AV DIVN DELAY/DAY (VEH-H)	0.0
AV TOTAL DELAY/DAY (VEH-H)	0.0

AVERAGE ACCIDENT NUMBERS (PIA/DAY)	
MAIN ROUTE WITHOUT WORKS	0.0123
MAIN ROUTE WITH WORKS	0.0130
DIVERSION	0.0637

PIA: Personal Injury Accidents

IMPACTS ON ROAD USERS	
ROAD USER COSTS PER DAY ( DOLLARS)	\$704
CONGESTED HOURS PER DAY*	0

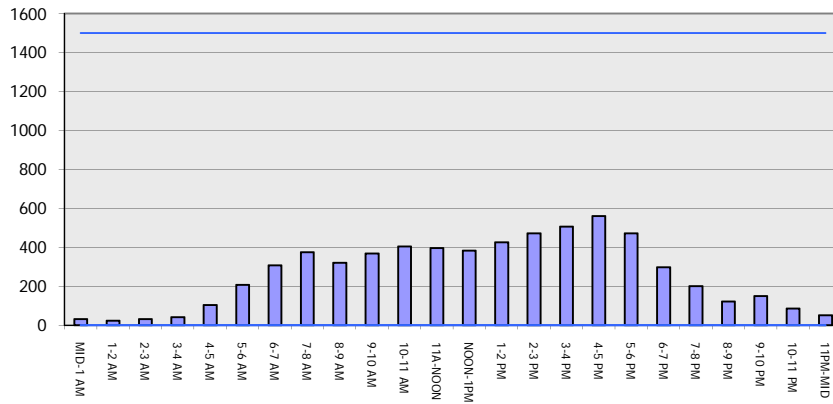
\*Delays Exceeding 15 Minutes

**USH 151: STH 22 TO USH 141 (OCONTO COUNTY)  
 CONTINUOUS (24 HOUR) CLOSURE  
 DIVERSION ROUTE: STH 141 - STH 22**

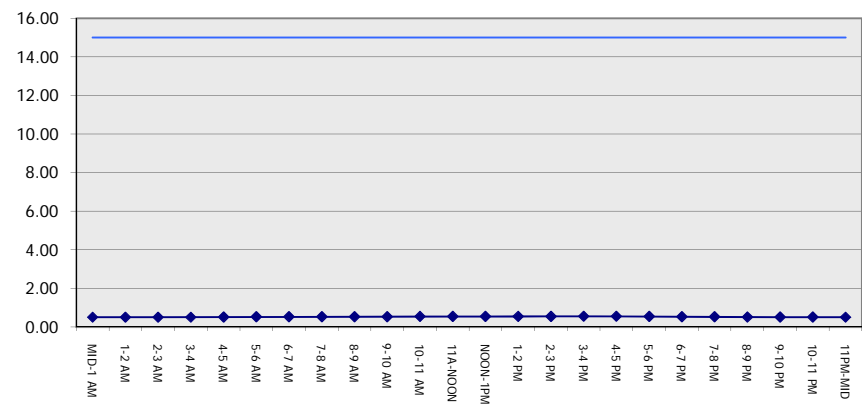
**OCTOBER**  
 Analyzed for 2009  
 Construction Season

**GRAPHICAL REPRESENTATION OF TRAFFIC MODEL INPUT AND OUTPUT**  
**FRIDAY SOUTHBOUND DIRECTION**

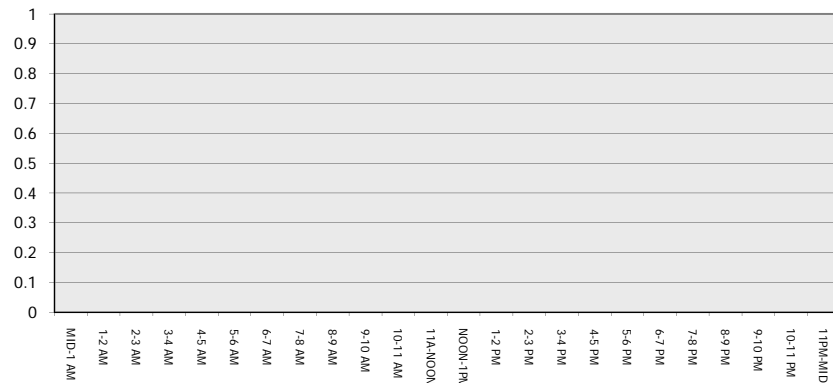
**Main Route - Traffic Demand (Vehicles Per Hour)**



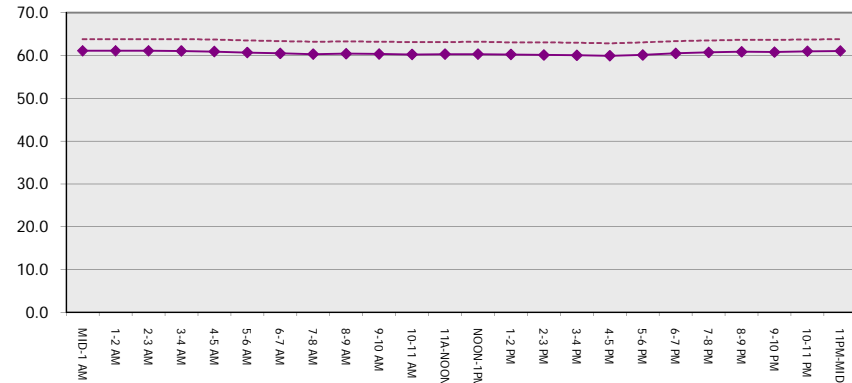
**Main Route Average Delay Per Vehicle (Minutes)**



**Main Route - Average Queue Length (Vehicles)**



**Main Route - Average Speed (MPH)**



<b>USH 151: STH 22 TO USH 141 (OCONTO COUNTY)</b> <b>CONTINUOUS (24 HOUR) CLOSURE</b> <b>DIVERSION ROUTE: STH 141 - STH 22</b>	<b>OCTOBER</b>
	Analyzed for 2009 Construction Season

**SUMMARY OF TRAFFIC MODEL OUTPUT**

FRIDAY NORTHBOUND DIRECTION

TIME OF DAY	FLOWS AND CAPACITY IN VEH/HR								AVERAGE SPEEDS IN MPH						
	MAIN		DIVERSION		SITE CAPA CITY	FLOW MAIN ROUTE	FLOW DIVER -TING	TOTAL DIVN FLOW	AV.DEL PER VEH (MINS)	AVERAGE QUEUE (VEH)	MAIN ROUTE		SITE	ALTERNATE ROUTE	
	DEMAND FLOW	PCT HEAVY	NORMAL FLOW	PCT HEAVY							WITHOUT WORK ZN	WITH WORK ZN		WITHOUT WORK ZN	WITH WORK ZN
MID-1 AM	57	0.0	32	0.0	1500	57	0	32	0.50	0	63.8	61.0	41.8	39.4	39.4
1-2 AM	45	0.0	25	0.0	1500	45	0	25	0.50	0	63.8	61.0	41.9	39.4	39.4
2-3 AM	38	0.0	21	0.0	1500	38	0	21	0.50	0	63.8	61.0	41.9	39.5	39.5
3-4 AM	32	0.0	19	0.0	1500	32	0	19	0.50	0	63.8	61.1	41.9	39.5	39.5
4-5 AM	72	0.0	42	0.0	1500	72	0	42	0.51	0	63.8	61.0	41.7	39.2	39.2
5-6 AM	135	0.0	77	0.0	1500	135	0	77	0.51	0	63.7	60.9	41.5	38.8	38.8
6-7 AM	253	0.0	146	0.0	1500	253	0	146	0.52	0	63.4	60.6	41.1	37.9	37.9
7-8 AM	322	0.0	186	0.0	1500	322	0	186	0.53	0	63.3	60.4	40.9	37.4	37.4
8-9 AM	348	0.0	201	0.0	1500	348	0	201	0.53	0	63.3	60.4	40.8	37.3	37.3
9-10 AM	319	0.0	185	0.0	1500	319	0	185	0.53	0	63.3	60.4	40.9	37.4	37.4
10-11 AM	367	0.0	212	0.0	1500	367	0	212	0.53	0	63.2	60.4	40.7	37.1	37.1
11A-NOON	395	0.0	228	0.0	1500	395	0	228	0.54	0	63.2	60.3	40.6	36.9	36.9
NOON-1PM	399	0.0	231	0.0	1500	399	0	231	0.54	0	63.2	60.3	40.6	36.9	36.9
1-2 PM	482	0.0	278	0.0	1500	482	0	278	0.54	0	63.0	60.1	40.4	36.3	36.3
2-3 PM	518	0.0	299	0.0	1500	518	0	299	0.55	0	62.9	60.0	40.2	36.0	36.0
3-4 PM	595	0.0	344	0.0	1500	595	0	344	0.56	0	62.8	59.9	40.0	35.5	35.5
4-5 PM	646	0.0	373	0.0	1500	646	0	373	0.56	0	62.7	59.7	39.8	35.1	35.1
5-6 PM	701	0.0	405	0.0	1500	701	0	405	0.57	0	62.6	59.6	39.6	34.7	34.7
6-7 PM	516	0.0	298	0.0	1500	516	0	298	0.55	0	63.0	60.0	40.2	36.0	36.0
7-8 PM	372	0.0	215	0.0	1500	372	0	215	0.53	0	63.2	60.3	40.7	37.1	37.1
8-9 PM	319	0.0	184	0.0	1500	319	0	184	0.53	0	63.3	60.4	40.9	37.4	37.4
9-10 PM	291	0.0	168	0.0	1500	291	0	168	0.53	0	63.3	60.5	41.0	37.6	37.6
10-11 PM	223	0.0	129	0.0	1500	223	0	129	0.52	0	63.5	60.7	41.2	38.1	38.1
11PM-MID	132	0.0	76	0.0	1500	132	0	76	0.51	0	63.7	60.9	41.5	38.8	38.8

*----- SITE BREAKDOWN DELAYS -----*	
BREAKDOWN DURATION (MINS)	0
RANGE OF QUEUE DELAY - MIN	0.0
(VEH-H) MAX	0.0
RANGE OF DIVN DELAY - MIN	0.0
(VEH-H) MAX	0.0
AV BREAKDOWNS PER DAY	0.00
AV QUEUE DELAY/DAY (VEH-H)	0.0
AV DIVN DELAY/DAY (VEH-H)	0.0
AV TOTAL DELAY/DAY (VEH-H)	0.0

*----- SITE ACCIDENT DELAYS -----*	
ACCIDENT DURATION (MINS)	0
RANGE OF QUEUE DELAY - MIN	0.0
(VEH-H) MAX	0.0
RANGE OF DIVN DELAY - MIN	0.0
(VEH-H) MAX	0.0
AV ACCIDENTS PER DAY	0.00
AV QUEUE DELAY/DAY (VEH-H)	0.0
AV DIVN DELAY/DAY (VEH-H)	0.0
AV TOTAL DELAY/DAY (VEH-H)	0.0

AVERAGE ACCIDENT NUMBERS (PIA/DAY)	
MAIN ROUTE WITHOUT WORKS	0.0147
MAIN ROUTE WITH WORKS	0.0156
DIVERSION	0.0761

PIA: Personal Injury Accidents

IMPACTS ON ROAD USERS	
ROAD USER COSTS PER DAY ( DOLLARS)	\$851
CONGESTED HOURS PER DAY*	0

\*Delays Exceeding 15 Minutes

**USH 151: STH 22 TO USH 141 (OCONTO COUNTY)  
 CONTINUOUS (24 HOUR) CLOSURE  
 DIVERSION ROUTE: STH 141 - STH 22**

**OCTOBER**  
 Analyzed for 2009  
 Construction Season

**GRAPHICAL REPRESENTATION OF TRAFFIC MODEL INPUT AND OUTPUT**  
**FRIDAY NORTHBOUND DIRECTION**

