

**USH 151: STH 22 TO USH 141 (CONTO COUNTY)  
CONTINUOUS (24 HOUR) CLOSURE  
DIVERSION ROUTE: STH 141 - STH 22**

**AUGUST**

Analyzed for 2009  
Construction Season

**SUMMARY OF TRAFFIC MODEL OUTPUT**

FRIDAY SOUTHBOUND DIRECTION

| TIME OF DAY | FLOWS AND CAPACITY IN VEH/HR |           |                 |           |                |                 |                  |                 | AVERAGE SPEEDS IN MPH |                     |                 |              |                 |                 |              |
|-------------|------------------------------|-----------|-----------------|-----------|----------------|-----------------|------------------|-----------------|-----------------------|---------------------|-----------------|--------------|-----------------|-----------------|--------------|
|             | MAIN ROUTE                   |           | ALTERNATE ROUTE |           | SITE CAPA CITY | FLOW MAIN ROUTE | FLOW DIVER -TING | TOTAL DIVN FLOW | AV.DEL PER VEH (MINS) | AVERAGE QUEUE (VEH) | MAIN ROUTE      |              | ALTERNATE ROUTE |                 |              |
|             | DEMAND FLOW                  | PCT HEAVY | NORMAL FLOW     | PCT HEAVY |                |                 |                  |                 |                       |                     | WITHOUT WORK ZN | WITH WORK ZN | SITE            | WITHOUT WORK ZN | WITH WORK ZN |
| MID-1 AM    | 25                           | 0.0       | 15              | 0.0       | 1500           | 25              | 0                | 15              | 0.50                  | 0                   | 63.8            | 61.1         | 41.9            | 39.6            | 39.6         |
| 1-2 AM      | 29                           | 0.0       | 17              | 0.0       | 1500           | 29              | 0                | 17              | 0.50                  | 0                   | 63.8            | 61.1         | 41.9            | 39.6            | 39.6         |
| 2-3 AM      | 31                           | 0.0       | 18              | 0.0       | 1500           | 31              | 0                | 18              | 0.50                  | 0                   | 63.8            | 61.1         | 41.9            | 39.5            | 39.5         |
| 3-4 AM      | 51                           | 0.0       | 29              | 0.0       | 1500           | 51              | 0                | 29              | 0.50                  | 0                   | 63.8            | 61.0         | 41.8            | 39.4            | 39.4         |
| 4-5 AM      | 114                          | 0.0       | 66              | 0.0       | 1500           | 114             | 0                | 66              | 0.51                  | 0                   | 63.7            | 60.9         | 41.6            | 38.9            | 38.9         |
| 5-6 AM      | 220                          | 0.0       | 128             | 0.0       | 1500           | 220             | 0                | 128             | 0.52                  | 0                   | 63.5            | 60.7         | 41.2            | 38.1            | 38.1         |
| 6-7 AM      | 305                          | 0.0       | 177             | 0.0       | 1500           | 305             | 0                | 177             | 0.53                  | 0                   | 63.3            | 60.5         | 40.9            | 37.6            | 37.6         |
| 7-8 AM      | 350                          | 0.0       | 202             | 0.0       | 1500           | 350             | 0                | 202             | 0.53                  | 0                   | 63.3            | 60.4         | 40.8            | 37.3            | 37.3         |
| 8-9 AM      | 325                          | 0.0       | 187             | 0.0       | 1500           | 325             | 0                | 187             | 0.53                  | 0                   | 63.3            | 60.4         | 40.9            | 37.4            | 37.4         |
| 9-10 AM     | 437                          | 0.0       | 253             | 0.0       | 1500           | 437             | 0                | 253             | 0.54                  | 0                   | 63.1            | 60.2         | 40.5            | 36.6            | 36.6         |
| 10-11 AM    | 426                          | 0.0       | 246             | 0.0       | 1500           | 426             | 0                | 246             | 0.54                  | 0                   | 63.1            | 60.2         | 40.6            | 36.7            | 36.7         |
| 11A-NOON    | 442                          | 0.0       | 255             | 0.0       | 1500           | 442             | 0                | 255             | 0.54                  | 0                   | 63.1            | 60.2         | 40.5            | 36.6            | 36.6         |
| NOON-1PM    | 419                          | 0.0       | 242             | 0.0       | 1500           | 419             | 0                | 242             | 0.54                  | 0                   | 63.1            | 60.2         | 40.6            | 36.8            | 36.8         |
| 1-2 PM      | 462                          | 0.0       | 268             | 0.0       | 1500           | 462             | 0                | 268             | 0.54                  | 0                   | 63.0            | 60.1         | 40.4            | 36.4            | 36.4         |
| 2-3 PM      | 458                          | 0.0       | 265             | 0.0       | 1500           | 458             | 0                | 265             | 0.54                  | 0                   | 63.0            | 60.1         | 40.4            | 36.5            | 36.5         |
| 3-4 PM      | 488                          | 0.0       | 283             | 0.0       | 1500           | 488             | 0                | 283             | 0.54                  | 0                   | 63.0            | 60.1         | 40.3            | 36.2            | 36.2         |
| 4-5 PM      | 486                          | 0.0       | 280             | 0.0       | 1500           | 486             | 0                | 280             | 0.54                  | 0                   | 63.0            | 60.1         | 40.4            | 36.3            | 36.3         |
| 5-6 PM      | 467                          | 0.0       | 270             | 0.0       | 1500           | 467             | 0                | 270             | 0.54                  | 0                   | 63.0            | 60.1         | 40.4            | 36.4            | 36.4         |
| 6-7 PM      | 294                          | 0.0       | 171             | 0.0       | 1500           | 294             | 0                | 171             | 0.53                  | 0                   | 63.3            | 60.5         | 41.0            | 37.6            | 37.6         |
| 7-8 PM      | 231                          | 0.0       | 134             | 0.0       | 1500           | 231             | 0                | 134             | 0.52                  | 0                   | 63.5            | 60.6         | 41.2            | 38.1            | 38.1         |
| 8-9 PM      | 156                          | 0.0       | 90              | 0.0       | 1500           | 156             | 0                | 90              | 0.51                  | 0                   | 63.6            | 60.8         | 41.4            | 38.6            | 38.6         |
| 9-10 PM     | 117                          | 0.0       | 67              | 0.0       | 1500           | 117             | 0                | 67              | 0.51                  | 0                   | 63.7            | 60.9         | 41.6            | 38.9            | 38.9         |
| 10-11 PM    | 94                           | 0.0       | 54              | 0.0       | 1500           | 94              | 0                | 54              | 0.51                  | 0                   | 63.7            | 60.9         | 41.7            | 39.1            | 39.1         |
| 11PM-MID    | 50                           | 0.0       | 28              | 0.0       | 1500           | 50              | 0                | 28              | 0.50                  | 0                   | 63.8            | 61.0         | 41.8            | 39.4            | 39.4         |

| *----- SITE BREAKDOWN DELAYS -----*    |      |
|--|------|
| BREAKDOWN DURATION (MINS)              | 0    |
| RANGE OF QUEUE DELAY - MIN (VEH-H) MAX | 0.0  |
| RANGE OF DIVN DELAY - MIN (VEH-H) MAX  | 0.0  |
| AV BREAKDOWNS PER DAY                  | 0.00 |
| AV QUEUE DELAY/DAY (VEH-H)             | 0.0  |
| AV DIVN DELAY/DAY (VEH-H)              | 0.0  |
| AV TOTAL DELAY/DAY (VEH-H)             | 0.0  |

| *----- SITE ACCIDENT DELAYS -----*     |      |
|--|------|
| ACCIDENT DURATION (MINS)               | 0    |
| RANGE OF QUEUE DELAY - MIN (VEH-H) MAX | 0.0  |
| RANGE OF DIVN DELAY - MIN (VEH-H) MAX  | 0.0  |
| AV ACCIDENTS PER DAY                   | 0.00 |
| AV QUEUE DELAY/DAY (VEH-H)             | 0.0  |
| AV DIVN DELAY/DAY (VEH-H)              | 0.0  |
| AV TOTAL DELAY/DAY (VEH-H)             | 0.0  |

| AVERAGE ACCIDENT NUMBERS (PIA/DAY) |        |
|------------------------------------|--------|
| MAIN ROUTE WITHOUT WORKS           | 0.0126 |
| MAIN ROUTE WITH WORKS              | 0.0133 |
| DIVERSION                          | 0.0651 |

PIA: Personal Injury Accidents

| IMPACTS ON ROAD USERS              |       |
|------------------------------------|-------|
| ROAD USER COSTS PER DAY ( DOLLARS) | \$720 |
| CONGESTED HOURS PER DAY*           | 0     |

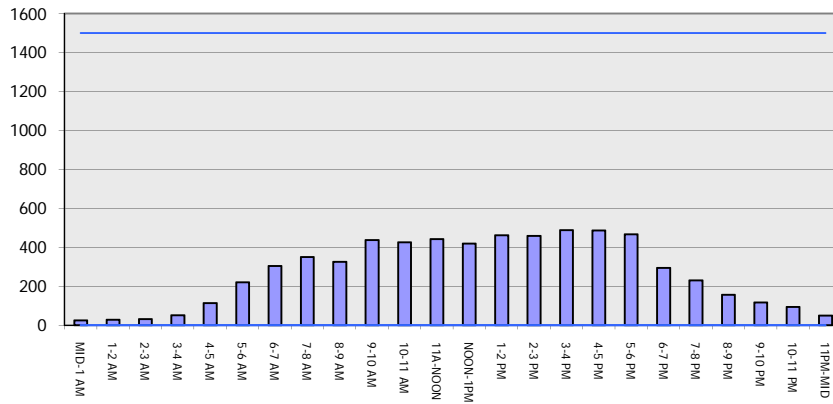
\*Delays Exceeding 15 Minutes

**USH 151: STH 22 TO USH 141 (OCONTO COUNTY)**  
**CONTINUOUS (24 HOUR) CLOSURE**  
**DIVERSION ROUTE: STH 141 - STH 22**

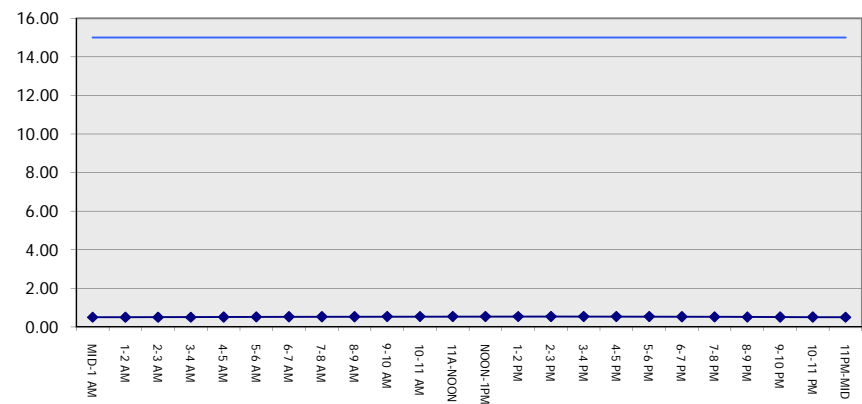
**AUGUST**  
 Analyzed for 2009  
 Construction Season

**GRAPHICAL REPRESENTATION OF TRAFFIC MODEL INPUT AND OUTPUT**  
**FRIDAY SOUTHBOUND DIRECTION**

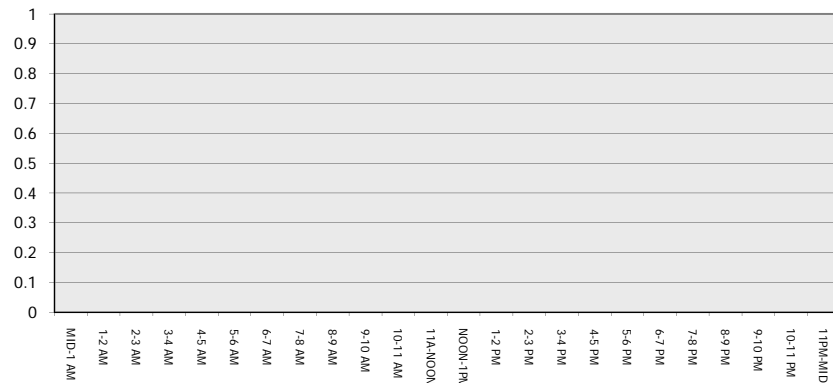
**Main Route - Traffic Demand (Vehicles Per Hour)**



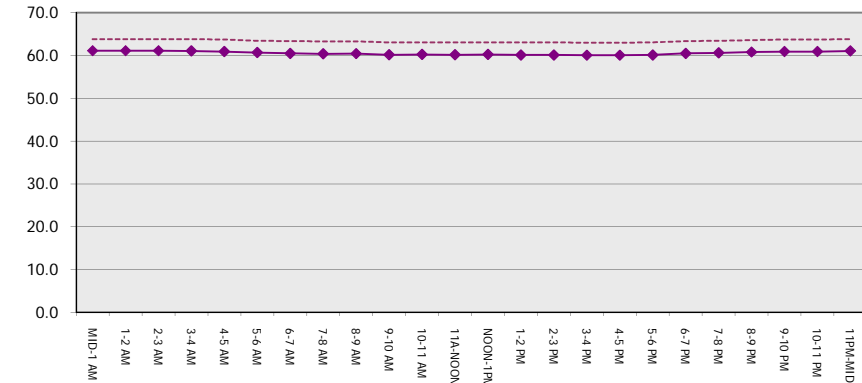
**Main Route Average Delay Per Vehicle (Minutes)**



**Main Route - Average Queue Length (Vehicles)**



**Main Route - Average Speed (MPH)**



|  |  |
|--|--|
| <b>USH 151: STH 22 TO USH 141 (OCONTO COUNTY)</b><br><b>CONTINUOUS (24 HOUR) CLOSURE</b><br><b>DIVERSION ROUTE: STH 141 - STH 22</b> | <b>AUGUST</b>                            |
|  | Analyzed for 2009<br>Construction Season |

**SUMMARY OF TRAFFIC MODEL OUTPUT**

FRIDAY      NORTHBOUND DIRECTION

| TIME OF DAY | FLOWS AND CAPACITY IN VEH/HR |           |             |           |                |                 |                  |                 | AVERAGE SPEEDS IN MPH |                     |                 |              |      |                 |              |
|-------------|------------------------------|-----------|-------------|-----------|----------------|-----------------|------------------|-----------------|-----------------------|---------------------|-----------------|--------------|------|-----------------|--------------|
|             | MAIN                         |           | DIVERSION   |           | SITE CAPA CITY | FLOW MAIN ROUTE | FLOW DIVER -TING | TOTAL DIVN FLOW | AV.DEL PER VEH (MINS) | AVERAGE QUEUE (VEH) | MAIN ROUTE      |              | SITE | ALTERNATE ROUTE |              |
|             | DEMAND FLOW                  | PCT HEAVY | NORMAL FLOW | PCT HEAVY |                |                 |                  |                 |                       |                     | WITHOUT WORK ZN | WITH WORK ZN |      | WITHOUT WORK ZN | WITH WORK ZN |
| MID-1 AM    | 62                           | 0.0       | 36          | 0.0       | 1500           | 62              | 0                | 36              | 0.50                  | 0                   | 63.8            | 61.0         | 41.8 | 39.3            | 39.3         |
| 1-2 AM      | 50                           | 0.0       | 28          | 0.0       | 1500           | 50              | 0                | 28              | 0.50                  | 0                   | 63.8            | 61.0         | 41.8 | 39.4            | 39.4         |
| 2-3 AM      | 40                           | 0.0       | 23          | 0.0       | 1500           | 40              | 0                | 23              | 0.50                  | 0                   | 63.8            | 61.0         | 41.9 | 39.4            | 39.4         |
| 3-4 AM      | 46                           | 0.0       | 26          | 0.0       | 1500           | 46              | 0                | 26              | 0.50                  | 0                   | 63.8            | 61.0         | 41.9 | 39.4            | 39.4         |
| 4-5 AM      | 73                           | 0.0       | 42          | 0.0       | 1500           | 73              | 0                | 42              | 0.51                  | 0                   | 63.8            | 61.0         | 41.7 | 39.2            | 39.2         |
| 5-6 AM      | 184                          | 0.0       | 106         | 0.0       | 1500           | 184             | 0                | 106             | 0.52                  | 0                   | 63.5            | 60.7         | 41.4 | 38.4            | 38.4         |
| 6-7 AM      | 253                          | 0.0       | 147         | 0.0       | 1500           | 253             | 0                | 147             | 0.52                  | 0                   | 63.4            | 60.6         | 41.1 | 37.9            | 37.9         |
| 7-8 AM      | 312                          | 0.0       | 181         | 0.0       | 1500           | 312             | 0                | 181             | 0.53                  | 0                   | 63.3            | 60.5         | 40.9 | 37.5            | 37.5         |
| 8-9 AM      | 352                          | 0.0       | 203         | 0.0       | 1500           | 352             | 0                | 203             | 0.53                  | 0                   | 63.2            | 60.4         | 40.8 | 37.2            | 37.2         |
| 9-10 AM     | 399                          | 0.0       | 230         | 0.0       | 1500           | 399             | 0                | 230             | 0.54                  | 0                   | 63.2            | 60.3         | 40.6 | 36.9            | 36.9         |
| 10-11 AM    | 429                          | 0.0       | 248         | 0.0       | 1500           | 429             | 0                | 248             | 0.54                  | 0                   | 63.1            | 60.2         | 40.6 | 36.6            | 36.6         |
| 11A-NOON    | 457                          | 0.0       | 265         | 0.0       | 1500           | 457             | 0                | 265             | 0.54                  | 0                   | 63.0            | 60.1         | 40.4 | 36.5            | 36.5         |
| NOON-1PM    | 488                          | 0.0       | 283         | 0.0       | 1500           | 488             | 0                | 283             | 0.54                  | 0                   | 63.0            | 60.1         | 40.3 | 36.2            | 36.2         |
| 1-2 PM      | 551                          | 0.0       | 318         | 0.0       | 1500           | 551             | 0                | 318             | 0.55                  | 0                   | 62.8            | 59.9         | 40.1 | 35.8            | 35.8         |
| 2-3 PM      | 559                          | 0.0       | 323         | 0.0       | 1500           | 559             | 0                | 323             | 0.55                  | 0                   | 62.8            | 59.9         | 40.1 | 35.7            | 35.7         |
| 3-4 PM      | 616                          | 0.0       | 356         | 0.0       | 1500           | 616             | 0                | 356             | 0.56                  | 0                   | 62.8            | 59.8         | 39.9 | 35.3            | 35.3         |
| 4-5 PM      | 709                          | 0.0       | 410         | 0.0       | 1500           | 709             | 0                | 410             | 0.57                  | 0                   | 62.6            | 59.6         | 39.6 | 34.7            | 34.7         |
| 5-6 PM      | 683                          | 0.0       | 395         | 0.0       | 1500           | 683             | 0                | 395             | 0.56                  | 0                   | 62.7            | 59.7         | 39.7 | 34.8            | 34.8         |
| 6-7 PM      | 460                          | 0.0       | 266         | 0.0       | 1500           | 460             | 0                | 266             | 0.54                  | 0                   | 63.0            | 60.1         | 40.4 | 36.5            | 36.5         |
| 7-8 PM      | 408                          | 0.0       | 235         | 0.0       | 1500           | 408             | 0                | 235             | 0.54                  | 0                   | 63.2            | 60.2         | 40.6 | 36.8            | 36.8         |
| 8-9 PM      | 315                          | 0.0       | 182         | 0.0       | 1500           | 315             | 0                | 182             | 0.53                  | 0                   | 63.3            | 60.4         | 40.9 | 37.5            | 37.5         |
| 9-10 PM     | 280                          | 0.0       | 162         | 0.0       | 1500           | 280             | 0                | 162             | 0.53                  | 0                   | 63.4            | 60.5         | 41.0 | 37.8            | 37.8         |
| 10-11 PM    | 183                          | 0.0       | 106         | 0.0       | 1500           | 183             | 0                | 106             | 0.52                  | 0                   | 63.6            | 60.7         | 41.4 | 38.4            | 38.4         |
| 11PM-MID    | 166                          | 0.0       | 96          | 0.0       | 1500           | 166             | 0                | 96              | 0.51                  | 0                   | 63.6            | 60.8         | 41.4 | 38.6            | 38.6         |

| *----- SITE BREAKDOWN DELAYS -----* |      |
|-------------------------------------|------|
| BREAKDOWN DURATION (MINS)           | 0    |
| RANGE OF QUEUE DELAY - MIN          | 0.0  |
| (VEH-H) MAX                         | 0.0  |
| RANGE OF DIVN DELAY - MIN           | 0.0  |
| (VEH-H) MAX                         | 0.0  |
| AV BREAKDOWNS PER DAY               | 0.00 |
| AV QUEUE DELAY/DAY (VEH-H)          | 0.0  |
| AV DIVN DELAY/DAY (VEH-H)           | 0.0  |
| AV TOTAL DELAY/DAY (VEH-H)          | 0.0  |

| *----- SITE ACCIDENT DELAYS -----* |      |
|------------------------------------|------|
| ACCIDENT DURATION (MINS)           | 0    |
| RANGE OF QUEUE DELAY - MIN         | 0.0  |
| (VEH-H) MAX                        | 0.0  |
| RANGE OF DIVN DELAY - MIN          | 0.0  |
| (VEH-H) MAX                        | 0.0  |
| AV ACCIDENTS PER DAY               | 0.00 |
| AV QUEUE DELAY/DAY (VEH-H)         | 0.0  |
| AV DIVN DELAY/DAY (VEH-H)          | 0.0  |
| AV TOTAL DELAY/DAY (VEH-H)         | 0.0  |

| AVERAGE ACCIDENT NUMBERS (PIA/DAY) |        |
|------------------------------------|--------|
| MAIN ROUTE WITHOUT WORKS           | 0.0157 |
| MAIN ROUTE WITH WORKS              | 0.0166 |
| DIVERSION                          | 0.0811 |

PIA: Personal Injury Accidents

| IMPACTS ON ROAD USERS              |       |
|------------------------------------|-------|
| ROAD USER COSTS PER DAY ( DOLLARS) | \$913 |
| CONGESTED HOURS PER DAY*           | 0     |

\*Delays Exceeding 15 Minutes

**USH 151: STH 22 TO USH 141 (OCONTO COUNTY)**  
**CONTINUOUS (24 HOUR) CLOSURE**  
**DIVERSION ROUTE: STH 141 - STH 22**

**AUGUST**  
 Analyzed for 2009  
 Construction Season

**GRAPHICAL REPRESENTATION OF TRAFFIC MODEL INPUT AND OUTPUT**  
**FRIDAY NORTHBOUND DIRECTION**

