

USH 151: STH 22 TO USH 141 (CONTO COUNTY) CONTINUOUS (24 HOUR) CLOSURE DIVERSION ROUTE: STH 141 - STH 22	MAY
	Analyzed for 2009 Construction Season

SUMMARY OF TRAFFIC MODEL OUTPUT

SUNDAY SOUTHBOUND DIRECTION

TIME OF DAY	FLOWS AND CAPACITY IN VEH/HR						AVERAGE SPEEDS IN MPH								
	MAIN ROUTE		ALTERNATE ROUTE		SITE CAPA CITY	FLOW MAIN ROUTE	FLOW DIVER -TING	TOTAL DIVN FLOW	AV.DEL PER VEH (MINS)	AVERAGE QUEUE (VEH)	MAIN ROUTE		ALTERNATE ROUTE		
	DEMAND FLOW	PCT HEAVY	NORMAL FLOW	PCT HEAVY							WITHOUT WORK ZN	WITH WORK ZN	SITE	WITHOUT WORK ZN	WITH WORK ZN
MID-1 AM	24	0.0	14	0.0	1500	24	0	14	0.50	0	63.8	61.1	41.9	39.6	39.6
1-2 AM	15	0.0	8	0.0	1500	15	0	8	0.50	0	63.9	61.1	41.9	39.6	39.6
2-3 AM	23	0.0	14	0.0	1500	23	0	14	0.50	0	63.8	61.1	41.9	39.6	39.6
3-4 AM	19	0.0	12	0.0	1500	19	0	12	0.50	0	63.8	61.1	41.9	39.6	39.6
4-5 AM	46	0.0	26	0.0	1500	46	0	26	0.50	0	63.8	61.0	41.9	39.4	39.4
5-6 AM	58	0.0	33	0.0	1500	58	0	33	0.50	0	63.8	61.0	41.8	39.3	39.3
6-7 AM	70	0.0	41	0.0	1500	70	0	41	0.51	0	63.8	61.0	41.7	39.2	39.2
7-8 AM	92	0.0	53	0.0	1500	92	0	53	0.51	0	63.7	60.9	41.7	39.1	39.1
8-9 AM	205	0.0	118	0.0	1500	205	0	118	0.52	0	63.5	60.7	41.3	38.3	38.3
9-10 AM	286	0.0	165	0.0	1500	286	0	165	0.53	0	63.3	60.5	41.0	37.7	37.7
10-11 AM	391	0.0	226	0.0	1500	391	0	226	0.54	0	63.2	60.3	40.7	36.9	36.9
11A-NOON	471	0.0	272	0.0	1500	471	0	272	0.54	0	63.0	60.1	40.4	36.4	36.4
NOON-1PM	465	0.0	269	0.0	1500	465	0	269	0.54	0	63.0	60.1	40.4	36.4	36.4
1-2 PM	442	0.0	255	0.0	1500	442	0	255	0.54	0	63.1	60.2	40.5	36.6	36.6
2-3 PM	473	0.0	273	0.0	1500	473	0	273	0.54	0	63.0	60.1	40.4	36.3	36.3
3-4 PM	427	0.0	247	0.0	1500	427	0	247	0.54	0	63.1	60.2	40.6	36.7	36.7
4-5 PM	383	0.0	222	0.0	1500	383	0	222	0.54	0	63.2	60.3	40.7	37.0	37.0
5-6 PM	374	0.0	217	0.0	1500	374	0	217	0.53	0	63.2	60.3	40.7	37.1	37.1
6-7 PM	302	0.0	175	0.0	1500	302	0	175	0.53	0	63.3	60.5	40.9	37.6	37.6
7-8 PM	247	0.0	143	0.0	1500	247	0	143	0.52	0	63.5	60.6	41.1	37.9	37.9
8-9 PM	172	0.0	99	0.0	1500	172	0	99	0.52	0	63.6	60.8	41.4	38.5	38.5
9-10 PM	98	0.0	57	0.0	1500	98	0	57	0.51	0	63.7	60.9	41.7	39.1	39.1
10-11 PM	57	0.0	32	0.0	1500	57	0	32	0.50	0	63.8	61.0	41.8	39.4	39.4
11PM-MID	33	0.0	19	0.0	1500	33	0	19	0.50	0	63.8	61.0	41.9	39.5	39.5

----- SITE BREAKDOWN DELAYS -----	
BREAKDOWN DURATION (MINS)	0
RANGE OF QUEUE DELAY - MIN	0.0
(VEH-H) MAX	0.0
RANGE OF DIVN DELAY - MIN	0.0
(VEH-H) MAX	0.0
AV BREAKDOWNS PER DAY	0.00
AV QUEUE DELAY/DAY (VEH-H)	0.0
AV DIVN DELAY/DAY (VEH-H)	0.0
AV TOTAL DELAY/DAY (VEH-H)	0.0

----- SITE ACCIDENT DELAYS -----	
ACCIDENT DURATION (MINS)	0
RANGE OF QUEUE DELAY - MIN	0.0
(VEH-H) MAX	0.0
RANGE OF DIVN DELAY - MIN	0.0
(VEH-H) MAX	0.0
AV ACCIDENTS PER DAY	0.00
AV QUEUE DELAY/DAY (VEH-H)	0.0
AV DIVN DELAY/DAY (VEH-H)	0.0
AV TOTAL DELAY/DAY (VEH-H)	0.0

AVERAGE ACCIDENT NUMBERS (PIA/DAY)	
MAIN ROUTE WITHOUT WORKS	0.0101
MAIN ROUTE WITH WORKS	0.0106
DIVERSION	0.0520

PIA: Personal Injury Accidents

IMPACTS ON ROAD USERS	
ROAD USER COSTS PER DAY (DOLLARS)	\$713
CONGESTED HOURS PER DAY*	0

*Delays Exceeding 15 Minutes

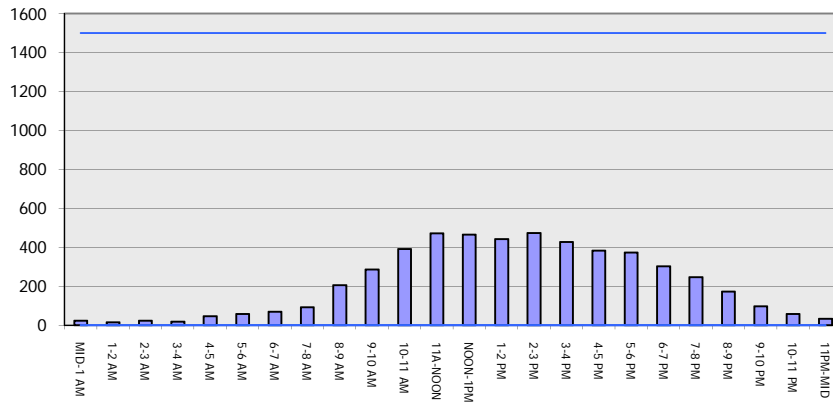
**USH 151: STH 22 TO USH 141 (OCONTO COUNTY)
 CONTINUOUS (24 HOUR) CLOSURE
 DIVERSION ROUTE: STH 141 - STH 22**

MAY
 Analyzed for 2009
 Construction Season

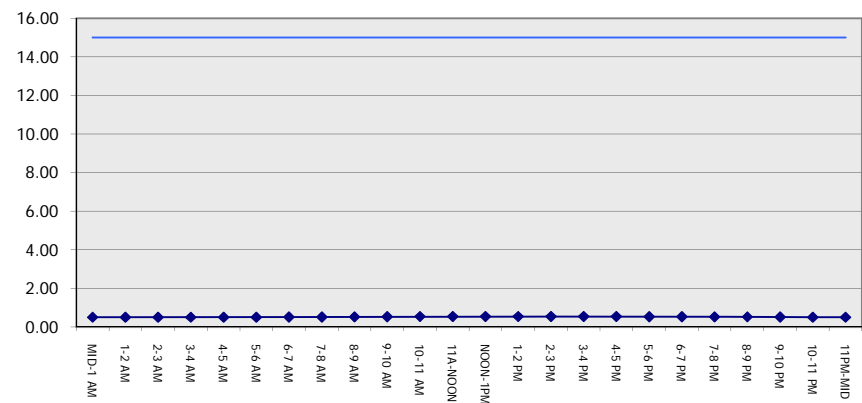
GRAPHICAL REPRESENTATION OF TRAFFIC MODEL INPUT AND OUTPUT

SUNDAY SOUTHBOUND DIRECTION

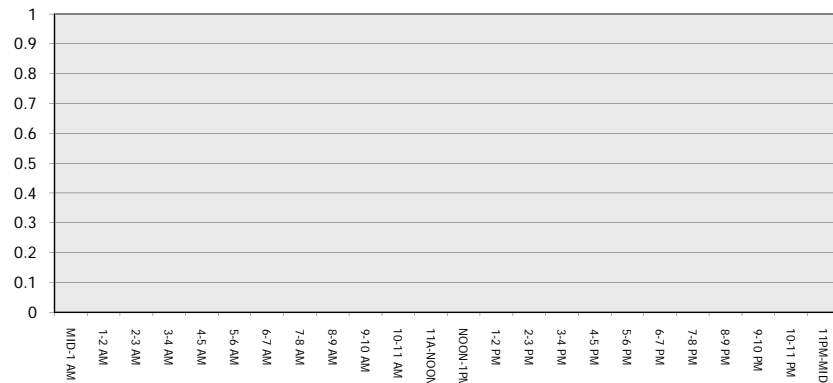
Main Route - Traffic Demand (Vehicles Per Hour)



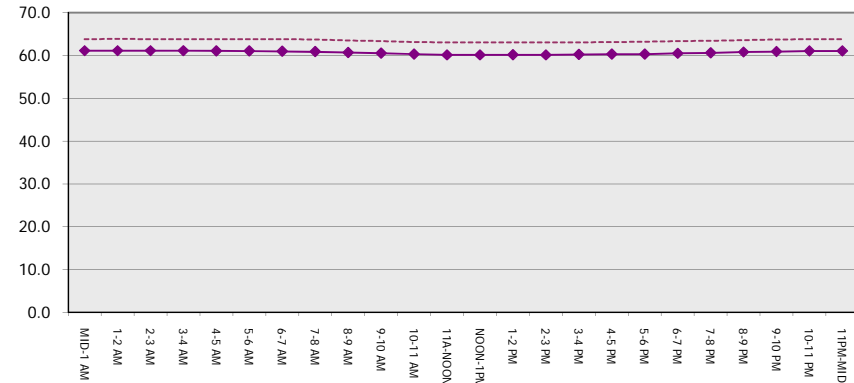
Main Route Average Delay Per Vehicle (Minutes)



Main Route - Average Queue Length (Vehicles)



Main Route - Average Speed (MPH)



USH 151: STH 22 TO USH 141 (OCONTO COUNTY) CONTINUOUS (24 HOUR) CLOSURE DIVERSION ROUTE: STH 141 - STH 22	MAY
	Analyzed for 2009 Construction Season

SUMMARY OF TRAFFIC MODEL OUTPUT

SUNDAY NORTHBOUND DIRECTION

TIME OF DAY	FLOWS AND CAPACITY IN VEH/HR								AVERAGE SPEEDS IN MPH						
	MAIN		DIVERSION		SITE CAPA CITY	FLOW MAIN ROUTE	FLOW DIVER -TING	TOTAL DIVN FLOW	AV.DEL PER VEH (MINS)	AVERAGE QUEUE (VEH)	MAIN ROUTE		SITE	ALTERNATE ROUTE	
	DEMAND FLOW	PCT HEAVY	NORMAL FLOW	PCT HEAVY							WITHOUT WORK ZN	WITH WORK ZN		WITHOUT WORK ZN	WITH WORK ZN
MID-1 AM	53	0.0	30	0.0	1500	53	0	30	0.50	0	63.8	61.0	41.8	39.4	39.4
1-2 AM	29	0.0	17	0.0	1500	29	0	17	0.50	0	63.8	61.1	41.9	39.6	39.6
2-3 AM	40	0.0	23	0.0	1500	40	0	23	0.50	0	63.8	61.0	41.9	39.4	39.4
3-4 AM	23	0.0	14	0.0	1500	23	0	14	0.50	0	63.8	61.1	41.9	39.6	39.6
4-5 AM	29	0.0	17	0.0	1500	29	0	17	0.50	0	63.8	61.1	41.9	39.6	39.6
5-6 AM	53	0.0	30	0.0	1500	53	0	30	0.50	0	63.8	61.0	41.8	39.4	39.4
6-7 AM	90	0.0	52	0.0	1500	90	0	52	0.51	0	63.7	60.9	41.7	39.1	39.1
7-8 AM	79	0.0	46	0.0	1500	79	0	46	0.51	0	63.8	61.0	41.7	39.2	39.2
8-9 AM	133	0.0	76	0.0	1500	133	0	76	0.51	0	63.7	60.9	41.5	38.8	38.8
9-10 AM	204	0.0	118	0.0	1500	204	0	118	0.52	0	63.5	60.7	41.3	38.3	38.3
10-11 AM	237	0.0	137	0.0	1500	237	0	137	0.52	0	63.5	60.6	41.2	38.1	38.1
11A-NOON	267	0.0	154	0.0	1500	267	0	154	0.52	0	63.4	60.5	41.0	37.8	37.8
NOON-1PM	283	0.0	163	0.0	1500	283	0	163	0.53	0	63.4	60.5	41.0	37.7	37.7
1-2 PM	337	0.0	195	0.0	1500	337	0	195	0.53	0	63.3	60.4	40.9	37.3	37.3
2-3 PM	365	0.0	211	0.0	1500	365	0	211	0.53	0	63.2	60.4	40.7	37.1	37.1
3-4 PM	363	0.0	210	0.0	1500	363	0	210	0.53	0	63.2	60.4	40.7	37.1	37.1
4-5 PM	364	0.0	210	0.0	1500	364	0	210	0.53	0	63.2	60.4	40.7	37.1	37.1
5-6 PM	352	0.0	203	0.0	1500	352	0	203	0.53	0	63.2	60.4	40.8	37.2	37.2
6-7 PM	330	0.0	190	0.0	1500	330	0	190	0.53	0	63.3	60.4	40.9	37.4	37.4
7-8 PM	224	0.0	130	0.0	1500	224	0	130	0.52	0	63.5	60.7	41.2	38.1	38.1
8-9 PM	156	0.0	90	0.0	1500	156	0	90	0.51	0	63.6	60.8	41.4	38.6	38.6
9-10 PM	108	0.0	62	0.0	1500	108	0	62	0.51	0	63.7	60.9	41.6	39.0	39.0
10-11 PM	51	0.0	29	0.0	1500	51	0	29	0.50	0	63.8	61.0	41.8	39.4	39.4
11PM-MID	79	0.0	46	0.0	1500	79	0	46	0.51	0	63.8	61.0	41.7	39.2	39.2

----- SITE BREAKDOWN DELAYS -----	
BREAKDOWN DURATION (MINS)	0
RANGE OF QUEUE DELAY - MIN	0.0
(VEH-H) MAX	0.0
RANGE OF DIVN DELAY - MIN	0.0
(VEH-H) MAX	0.0
AV BREAKDOWNS PER DAY	0.00
AV QUEUE DELAY/DAY (VEH-H)	0.0
AV DIVN DELAY/DAY (VEH-H)	0.0
AV TOTAL DELAY/DAY (VEH-H)	0.0

----- SITE ACCIDENT DELAYS -----	
ACCIDENT DURATION (MINS)	0
RANGE OF QUEUE DELAY - MIN	0.0
(VEH-H) MAX	0.0
RANGE OF DIVN DELAY - MIN	0.0
(VEH-H) MAX	0.0
AV ACCIDENTS PER DAY	0.00
AV QUEUE DELAY/DAY (VEH-H)	0.0
AV DIVN DELAY/DAY (VEH-H)	0.0
AV TOTAL DELAY/DAY (VEH-H)	0.0

AVERAGE ACCIDENT NUMBERS (PIA/DAY)	
MAIN ROUTE WITHOUT WORKS	0.0083
MAIN ROUTE WITH WORKS	0.0087
DIVERSION	0.0427

PIA: Personal Injury Accidents

IMPACTS ON ROAD USERS	
ROAD USER COSTS PER DAY (DOLLARS)	\$575
CONGESTED HOURS PER DAY*	0

*Delays Exceeding 15 Minutes

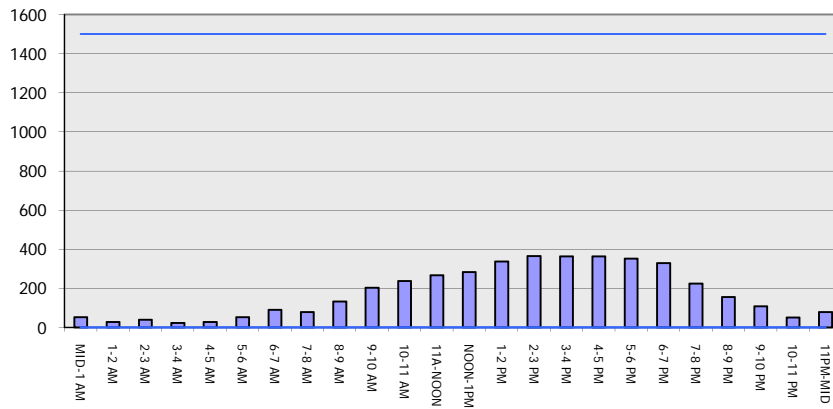
USH 151: STH 22 TO USH 141 (OCONTO COUNTY)
CONTINUOUS (24 HOUR) CLOSURE
DIVERSION ROUTE: STH 141 - STH 22

MAY
 Analyzed for 2009
 Construction Season

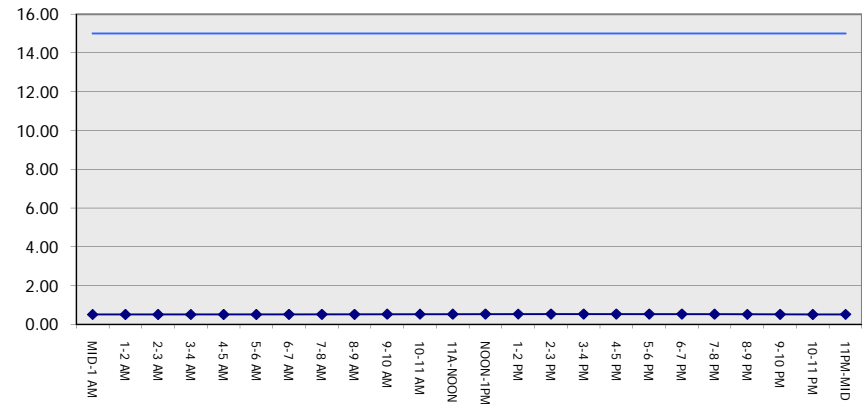
GRAPHICAL REPRESENTATION OF TRAFFIC MODEL INPUT AND OUTPUT

SUNDAY NORTHBOUND DIRECTION

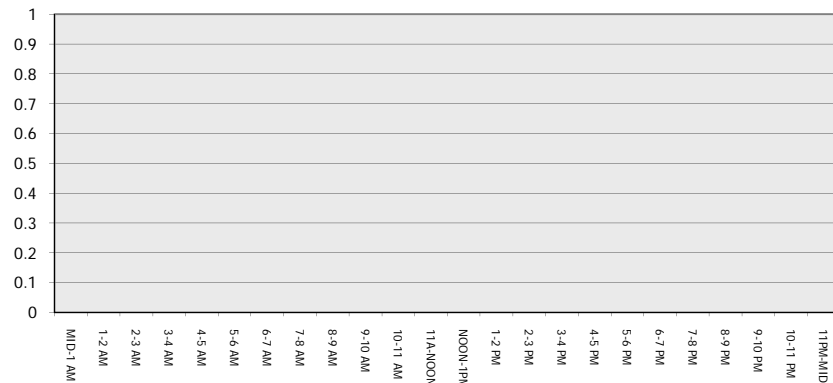
Main Route - Traffic Demand (Vehicles Per Hour)



Main Route Average Delay Per Vehicle (Minutes)



Main Route - Average Queue Length (Vehicles)



Main Route - Average Speed (MPH)

