

USH 41: CTH T TO MAPLE ST (MARINETTE COUNTY CONTINUOUS (24 HOUR) CLOSURE NO DIVERSION ROUTE (MAX QUEUE METHOD)	OCTOBER
	Analyzed for 2009 Construction Season

SUMMARY OF TRAFFIC MODEL OUTPUT

FRIDAY SOUTHBOUND DIRECTION

TIME OF DAY	FLOWS AND CAPACITY IN VEH/HR						AVERAGE SPEEDS IN MPH			
	MAIN ROUTE		SITE CAPA CITY	FLOW		AV.DEL PER VEH (MINS)	AVERAGE QUEUE (VEH)	MAIN ROUTE		SITE
	DEMAND FLOW	PCT HEAVY		MAIN ROUTE	'DIVER TED'			WITHOUT WORK ZONE	WITH WORK ZONE	
MID-1 AM	54	0.0	1500	54	0	0.50	0	63.8	57.1	41.8
1-2 AM	62	0.0	1500	62	0	0.50	0	63.8	57.1	41.8
2-3 AM	42	0.0	1500	42	0	0.50	0	63.8	57.2	41.9
3-4 AM	42	0.0	1500	42	0	0.50	0	63.8	57.2	41.9
4-5 AM	127	0.0	1500	127	0	0.51	0	63.7	56.9	41.5
5-6 AM	240	0.0	1500	240	0	0.52	0	63.5	56.6	41.2
6-7 AM	350	0.0	1500	350	0	0.53	0	63.3	56.4	40.8
7-8 AM	507	0.0	1500	507	0	0.55	0	63.0	56.0	40.2
8-9 AM	436	0.0	1500	436	0	0.54	0	63.1	56.1	40.5
9-10 AM	574	0.0	1500	574	0	0.55	0	62.8	55.8	40.1
10-11 AM	543	0.0	1500	543	0	0.55	0	62.9	55.9	40.2
11AM-NOON	663	0.0	1500	663	0	0.56	0	62.7	55.6	39.7
NOON-1PM	747	0.0	1500	747	0	0.57	0	62.5	55.3	39.5
1-2 PM	731	0.0	1500	731	0	0.57	0	62.5	55.4	39.6
2-3 PM	790	0.0	1500	790	0	0.57	0	62.4	55.3	39.4
3-4 PM	967	0.0	1500	967	0	0.59	0	62.1	54.8	38.8
4-5 PM	919	0.0	1500	919	0	0.59	0	62.2	55.0	38.9
5-6 PM	731	0.0	1500	731	0	0.57	0	62.5	55.4	39.6
6-7 PM	592	0.0	1500	592	0	0.55	0	62.8	55.8	40.0
7-8 PM	342	0.0	1500	342	0	0.53	0	63.3	56.4	40.8
8-9 PM	258	0.0	1500	258	0	0.52	0	63.4	56.6	41.1
9-10 PM	208	0.0	1500	208	0	0.52	0	63.5	56.8	41.3
10-11 PM	154	0.0	1500	154	0	0.51	0	63.6	56.9	41.5
11PM-MID	135	0.0	1500	135	0	0.51	0	63.7	56.9	41.5

----- SITE BREAKDOWN DELAYS -----	
BREAKDOWN DURATION (MINS)	0
RANGE OF QUEUE DELAY - MIN (VEH-H) MAX	0.0
AV BREAKDOWNS PER DAY	0.00
AV QUEUE DELAY/DAY (VEH-H)	0.0
AV TOTAL DELAY/DAY (VEH-H)	0.0

----- SITE ACCIDENT DELAYS -----	
BREAKDOWN DURATION (MINS)	0
RANGE OF QUEUE DELAY - MIN (VEH-H) MAX	0
AV BREAKDOWNS PER DAY	0
AV QUEUE DELAY/DAY (VEH-H)	0
AV TOTAL DELAY/DAY (VEH-H)	0

AVERAGE ACCIDENT NUMBERS (PIA/DAY)	
MAIN ROUTE WITHOUT WORKS	0.0077
MAIN ROUTE WITH WORKS	0.0088
'DIVERSION'	0.0000
PIA: Personal Injury Accidents	
IMPACTS ON ROAD USERS	
ROAD USER COSTS PER DAY	\$1,190
CONGESTED HOURS PER DAY*	0

*Delays Exceeding User-Specified Maximum

**USH 41: CTH T TO MAPLE ST (MARINETTE COUNTY
CONTINUOUS (24 HOUR) CLOSURE
NO DIVERSION ROUTE (MAX QUEUE METHOD)**

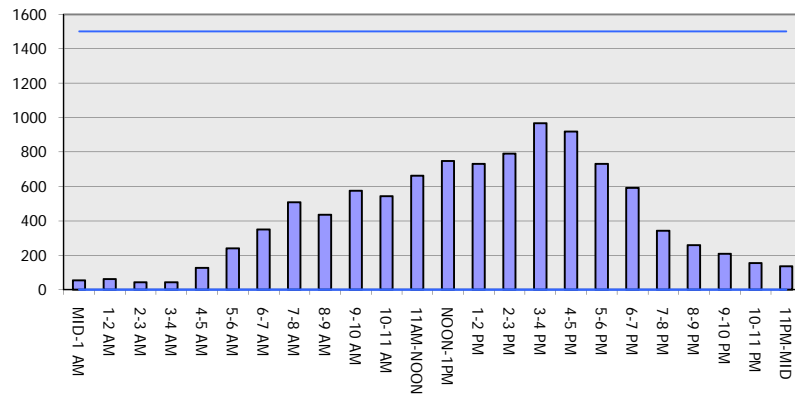
OCTOBER

Analyzed for 2009
Construction Season

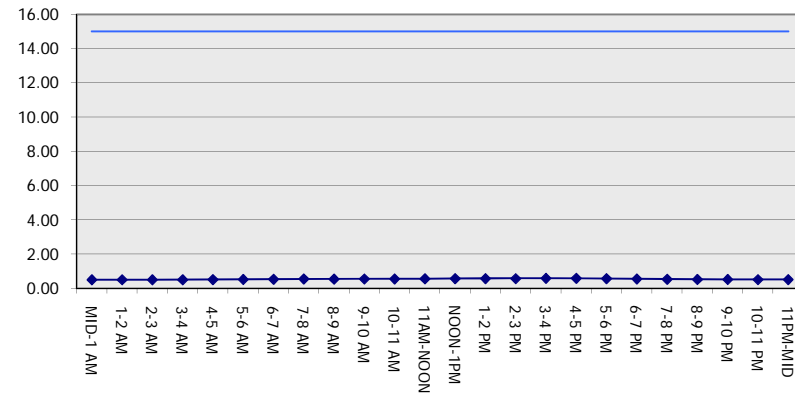
GRAPHICAL REPRESENTATION OF TRAFFIC MODEL INPUT AND OUTPUT

FRIDAY SOUTHBOUND DIRECTION

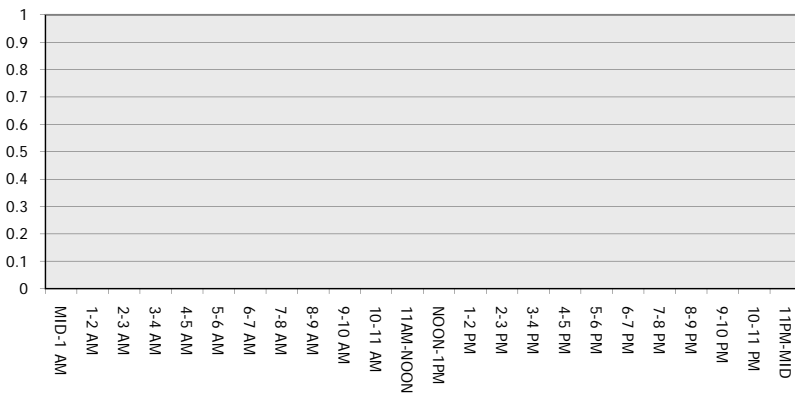
Main Route - Traffic Demand (Vehicles Per Hour)



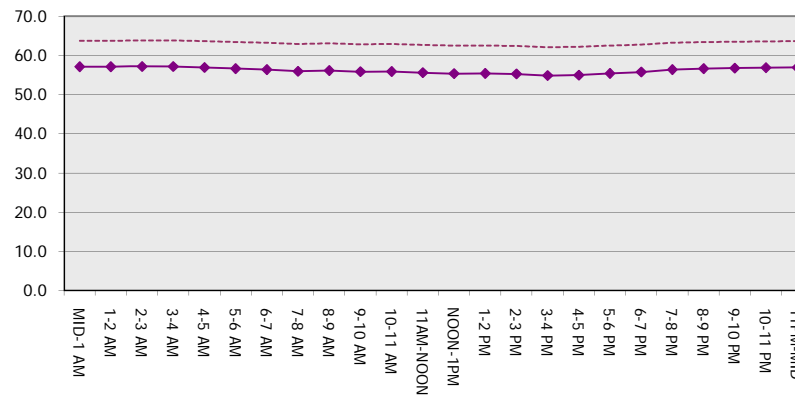
Main Route Average Delay Per Vehicle (Minutes)



Main Route - Average Queue Length (Vehicles)



Main Route - Average Speed (MPH)



USH 41: CTH T TO MAPLE ST (MARINETTE COUNTY CONTINUOUS (24 HOUR) CLOSURE NO DIVERSION ROUTE (MAX QUEUE METHOD)	OCTOBER
	Analyzed for 2009 Construction Season

SUMMARY OF TRAFFIC MODEL OUTPUT

FRIDAY NORTHBOUND DIRECTION

TIME OF DAY	FLOWS AND CAPACITY IN VEH/HR						AVERAGE SPEEDS IN MPH			
	MAIN ROUTE		SITE CAPA CITY	FLOW		AV.DEL PER VEH (MINS)	AVERAGE QUEUE (VEH)	MAIN ROUTE		SITE
	DEMAND FLOW	PCT HEAVY		MAIN ROUTE	'DIVER TED'			WITHOUT WORK ZONE	WITH WORK ZONE	
MID-1 AM	67	0.0	1500	67	0	0.51	0	63.8	57.1	41.8
1-2 AM	49	0.0	1500	49	0	0.50	0	63.8	57.1	41.9
2-3 AM	36	0.0	1500	36	0	0.50	0	63.8	57.2	41.9
3-4 AM	51	0.0	1500	51	0	0.50	0	63.8	57.1	41.8
4-5 AM	152	0.0	1500	152	0	0.51	0	63.6	56.9	41.5
5-6 AM	256	0.0	1500	256	0	0.52	0	63.4	56.6	41.1
6-7 AM	419	0.0	1500	419	0	0.54	0	63.1	56.2	40.6
7-8 AM	620	0.0	1500	620	0	0.56	0	62.7	55.7	39.9
8-9 AM	601	0.0	1500	601	0	0.56	0	62.8	55.7	40.0
9-10 AM	553	0.0	1500	553	0	0.55	0	62.8	55.8	40.1
10-11 AM	585	0.0	1500	585	0	0.55	0	62.8	55.8	40.0
11AM-NOON	701	0.0	1500	701	0	0.57	0	62.6	55.5	39.6
NOON-1PM	703	0.0	1500	703	0	0.57	0	62.6	55.5	39.6
1-2 PM	649	0.0	1500	649	0	0.56	0	62.7	55.6	39.8
2-3 PM	788	0.0	1500	788	0	0.57	0	62.4	55.3	39.4
3-4 PM	845	0.0	1500	845	0	0.58	0	62.3	55.1	39.2
4-5 PM	840	0.0	1500	840	0	0.58	0	62.3	55.1	39.2
5-6 PM	863	0.0	1500	863	0	0.58	0	62.3	55.1	39.1
6-7 PM	659	0.0	1500	659	0	0.56	0	62.7	55.6	39.8
7-8 PM	490	0.0	1500	490	0	0.55	0	63.0	56.0	40.3
8-9 PM	374	0.0	1500	374	0	0.53	0	63.2	56.3	40.7
9-10 PM	461	0.0	1500	461	0	0.54	0	63.0	56.1	40.4
10-11 PM	259	0.0	1500	259	0	0.52	0	63.4	56.6	41.1
11PM-MID	129	0.0	1500	129	0	0.51	0	63.7	56.9	41.5

----- SITE BREAKDOWN DELAYS -----	
BREAKDOWN DURATION (MINS)	0
RANGE OF QUEUE DELAY - MIN (VEH-H) MAX	0.0
AV BREAKDOWNS PER DAY	0.00
AV QUEUE DELAY/DAY (VEH-H)	0.0
AV TOTAL DELAY/DAY (VEH-H)	0.0

----- SITE ACCIDENT DELAYS -----	
BREAKDOWN DURATION (MINS)	0
RANGE OF QUEUE DELAY - MIN (VEH-H) MAX	0
AV BREAKDOWNS PER DAY	0
AV QUEUE DELAY/DAY (VEH-H)	0
AV TOTAL DELAY/DAY (VEH-H)	0

AVERAGE ACCIDENT NUMBERS (PIA/DAY)	
MAIN ROUTE WITHOUT WORKS	0.0084
MAIN ROUTE WITH WORKS	0.0097
'DIVERSION'	0.0000

PIA: Personal Injury Accidents

ECONOMIC IMPACT ON ROAD USERS	
ROAD USER COSTS PER DAY	\$1,301
CONGESTED HOURS PER DAY*	0

*Delays Exceeding User-Specified Maximum

**USH 41: CTH T TO MAPLE ST (MARINETTE COUNTY
CONTINUOUS (24 HOUR) CLOSURE
NO DIVERSION ROUTE (MAX QUEUE METHOD)**

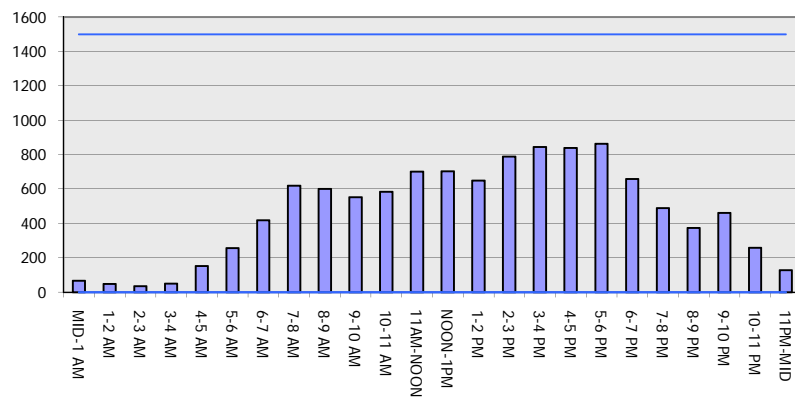
OCTOBER

Analyzed for 2009
Construction Season

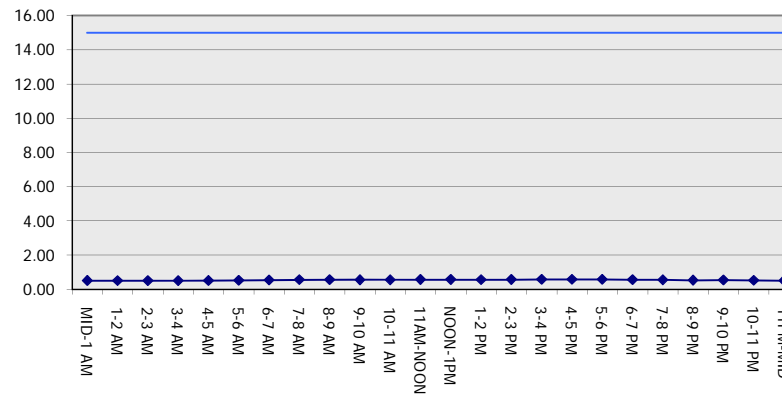
GRAPHICAL REPRESENTATION OF TRAFFIC MODEL INPUT AND OUTPUT

FRIDAY NORTHBOUND DIRECTION

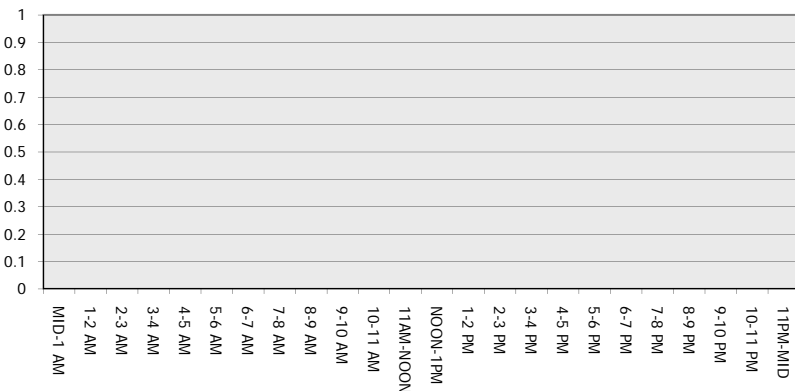
Main Route - Traffic Demand (Vehicles Per Hour)



Main Route Average Delay Per Vehicle (Minutes)



Main Route - Average Queue Length (Vehicles)



Main Route - Average Speed (MPH)

