

<b>USH 41: CTH T TO MAPLE ST (MARINETTE COUNTY CONTINUOUS (24 HOUR) CLOSURE NO DIVERSION ROUTE (MAX QUEUE METHOD)</b>	<b>AUGUST</b>
	Analyzed for 2009 Construction Season

**SUMMARY OF TRAFFIC MODEL OUTPUT**

SATURDAY SOUTHBOUND DIRECTION

TIME OF DAY	FLOWS AND CAPACITY IN VEH/HR						AVERAGE SPEEDS IN MPH			
	MAIN ROUTE		SITE CAPA CITY	FLOW		AV.DEL PER VEH (MINS)	AVERAGE QUEUE (VEH)	MAIN ROUTE		SITE
	DEMAND FLOW	PCT HEAVY		MAIN ROUTE	'DIVER TED'			WITHOUT WORK ZONE	WITH WORK ZONE	
MID-1 AM	81	0.0	1500	81	0	0.51	0	63.8	57.1	41.7
1-2 AM	62	0.0	1500	62	0	0.50	0	63.8	57.1	41.8
2-3 AM	46	0.0	1500	46	0	0.50	0	63.8	57.1	41.9
3-4 AM	35	0.0	1500	35	0	0.50	0	63.8	57.2	41.9
4-5 AM	54	0.0	1500	54	0	0.50	0	63.8	57.1	41.8
5-6 AM	86	0.0	1500	86	0	0.51	0	63.7	57.1	41.7
6-7 AM	155	0.0	1500	155	0	0.51	0	63.6	56.9	41.5
7-8 AM	213	0.0	1500	213	0	0.52	0	63.5	56.7	41.2
8-9 AM	338	0.0	1500	338	0	0.53	0	63.3	56.4	40.8
9-10 AM	515	0.0	1500	515	0	0.55	0	63.0	56.0	40.2
10-11 AM	584	0.0	1500	584	0	0.55	0	62.8	55.8	40.0
11AM-NOON	627	0.0	1500	627	0	0.56	0	62.7	55.6	39.9
NOON-1PM	649	0.0	1500	649	0	0.56	0	62.7	55.6	39.8
1-2 PM	629	0.0	1500	629	0	0.56	0	62.7	55.6	39.9
2-3 PM	628	0.0	1500	628	0	0.56	0	62.7	55.6	39.9
3-4 PM	544	0.0	1500	544	0	0.55	0	62.9	55.9	40.2
4-5 PM	490	0.0	1500	490	0	0.55	0	63.0	56.0	40.3
5-6 PM	436	0.0	1500	436	0	0.54	0	63.1	56.1	40.5
6-7 PM	375	0.0	1500	375	0	0.53	0	63.2	56.3	40.7
7-8 PM	306	0.0	1500	306	0	0.53	0	63.3	56.5	40.9
8-9 PM	237	0.0	1500	237	0	0.52	0	63.5	56.6	41.2
9-10 PM	236	0.0	1500	236	0	0.52	0	63.5	56.6	41.2
10-11 PM	307	0.0	1500	307	0	0.53	0	63.3	56.5	40.9
11PM-MID	205	0.0	1500	205	0	0.52	0	63.5	56.8	41.3

**\*----- SITE BREAKDOWN DELAYS -----\***

BREAKDOWN DURATION (MINS)	0
RANGE OF QUEUE DELAY - MIN (VEH-H) MAX	0.0
AV BREAKDOWNS PER DAY	0.00
AV QUEUE DELAY/DAY (VEH-H)	0.0
AV TOTAL DELAY/DAY (VEH-H)	0.0

**\*----- SITE ACCIDENT DELAYS -----\***

BREAKDOWN DURATION (MINS)	0
RANGE OF QUEUE DELAY - MIN (VEH-H) MAX	0
AV BREAKDOWNS PER DAY	0
AV QUEUE DELAY/DAY (VEH-H)	0
AV TOTAL DELAY/DAY (VEH-H)	0

**AVERAGE ACCIDENT NUMBERS (PIA/DAY)**

MAIN ROUTE WITHOUT WORKS	0.0059
MAIN ROUTE WITH WORKS	0.0068
'DIVERSION'	0.0000

PIA: Personal Injury Accidents

**IMPACTS ON ROAD USERS**

ROAD USER COSTS PER DAY	\$1,091
CONGESTED HOURS PER DAY*	0

\*Delays Exceeding User-Specified Maximum

**USH 41: CTH T TO MAPLE ST (MARINETTE COUNTY  
CONTINUOUS (24 HOUR) CLOSURE  
NO DIVERSION ROUTE (MAX QUEUE METHOD)**

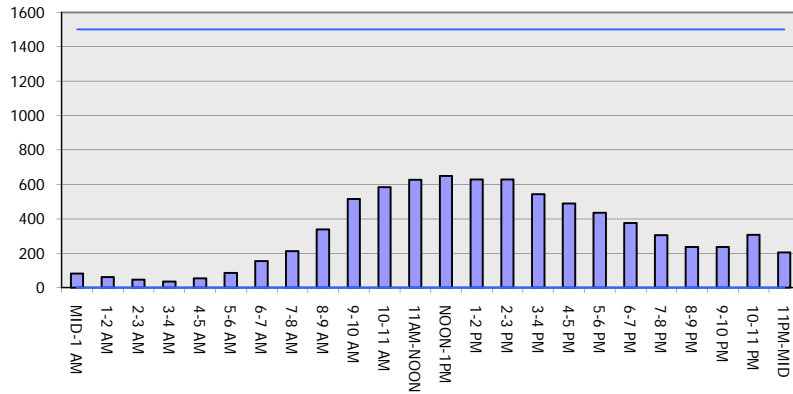
**AUGUST**

Analyzed for 2009  
Construction Season

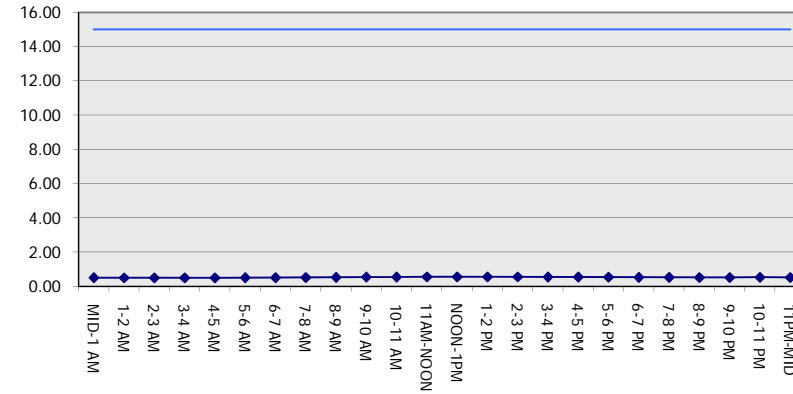
**GRAPHICAL REPRESENTATION OF TRAFFIC MODEL INPUT AND OUTPUT**

**SATURDAY SOUTHBOUND DIRECTION**

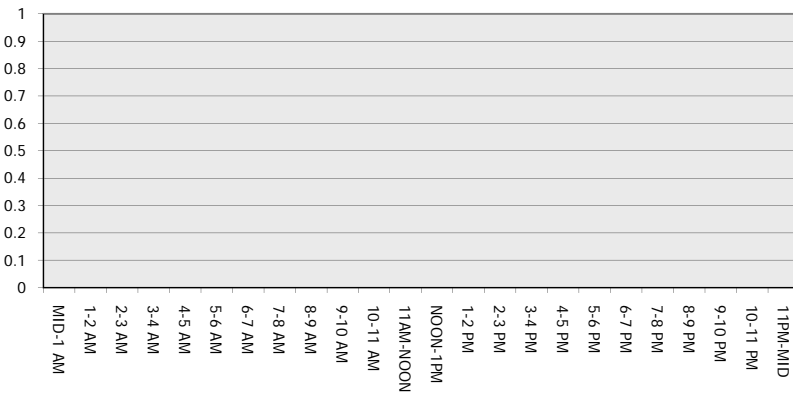
**Main Route - Traffic Demand (Vehicles Per Hour)**



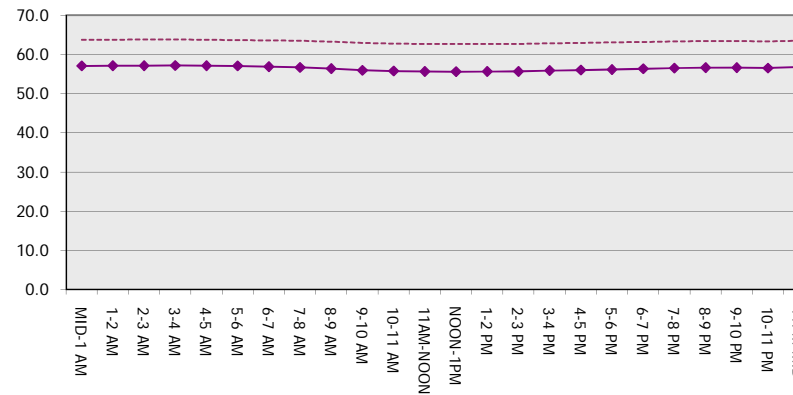
**Main Route Average Delay Per Vehicle (Minutes)**



**Main Route - Average Queue Length (Vehicles)**



**Main Route - Average Speed (MPH)**



<b>USH 41: CTH T TO MAPLE ST (MARINETTE COUNTY CONTINUOUS (24 HOUR) CLOSURE NO DIVERSION ROUTE (MAX QUEUE METHOD)</b>	<b>AUGUST</b>
	Analyzed for 2009 Construction Season

**SUMMARY OF TRAFFIC MODEL OUTPUT**

SATURDAY NORTHBOUND DIRECTION

TIME OF DAY	FLOWS AND CAPACITY IN VEH/HR							AVERAGE SPEEDS IN MPH		
	MAIN ROUTE		SITE CAPA CITY	FLOW		AV.DEL PER VEH (MINS)	AVERAGE QUEUE (VEH)	MAIN ROUTE		SITE
	DEMAND FLOW	PCT HEAVY		MAIN ROUTE	'DIVER TED'			WITHOUT WORK ZONE	WITH WORK ZONE	
MID-1 AM	95	0.0	1500	95	0	0.51	0	63.7	57.0	41.7
1-2 AM	61	0.0	1500	61	0	0.50	0	63.8	57.1	41.8
2-3 AM	51	0.0	1500	51	0	0.50	0	63.8	57.1	41.8
3-4 AM	42	0.0	1500	42	0	0.50	0	63.8	57.2	41.9
4-5 AM	92	0.0	1500	92	0	0.51	0	63.7	57.1	41.7
5-6 AM	121	0.0	1500	121	0	0.51	0	63.7	56.9	41.5
6-7 AM	162	0.0	1500	162	0	0.51	0	63.6	56.9	41.4
7-8 AM	228	0.0	1500	228	0	0.52	0	63.5	56.7	41.2
8-9 AM	376	0.0	1500	376	0	0.53	0	63.2	56.3	40.7
9-10 AM	539	0.0	1500	539	0	0.55	0	62.9	55.9	40.2
10-11 AM	687	0.0	1500	687	0	0.56	0	62.6	55.5	39.7
11AM-NOON	718	0.0	1500	718	0	0.57	0	62.5	55.5	39.6
NOON-1PM	637	0.0	1500	637	0	0.56	0	62.7	55.6	39.9
1-2 PM	641	0.0	1500	641	0	0.56	0	62.7	55.6	39.8
2-3 PM	572	0.0	1500	572	0	0.55	0	62.8	55.8	40.1
3-4 PM	538	0.0	1500	538	0	0.55	0	62.9	55.9	40.2
4-5 PM	513	0.0	1500	513	0	0.55	0	63.0	56.0	40.2
5-6 PM	488	0.0	1500	488	0	0.54	0	63.0	56.0	40.3
6-7 PM	438	0.0	1500	438	0	0.54	0	63.1	56.1	40.5
7-8 PM	356	0.0	1500	356	0	0.53	0	63.2	56.3	40.8
8-9 PM	330	0.0	1500	330	0	0.53	0	63.3	56.4	40.9
9-10 PM	239	0.0	1500	239	0	0.52	0	63.5	56.6	41.2
10-11 PM	182	0.0	1500	182	0	0.52	0	63.6	56.8	41.4
11PM-MID	173	0.0	1500	173	0	0.52	0	63.6	56.8	41.4

*----- SITE BREAKDOWN DELAYS -----*	
BREAKDOWN DURATION (MINS)	0
RANGE OF QUEUE DELAY - MIN (VEH-H) MAX	0.0
AV BREAKDOWNS PER DAY	0.00
AV QUEUE DELAY/DAY (VEH-H)	0.0
AV TOTAL DELAY/DAY (VEH-H)	0.0

*----- SITE ACCIDENT DELAYS -----*	
BREAKDOWN DURATION (MINS)	0
RANGE OF QUEUE DELAY - MIN (VEH-H) MAX	0
AV BREAKDOWNS PER DAY	0
AV QUEUE DELAY/DAY (VEH-H)	0
AV TOTAL DELAY/DAY (VEH-H)	0

AVERAGE ACCIDENT NUMBERS (PIA/DAY)	
MAIN ROUTE WITHOUT WORKS	0.0063
MAIN ROUTE WITH WORKS	0.0072
'DIVERSION'	0.0000

PIA: Personal Injury Accidents

ECONOMIC IMPACT ON ROAD USERS	
ROAD USER COSTS PER DAY	\$1,155
CONGESTED HOURS PER DAY*	0

\*Delays Exceeding User-Specified Maximum

**USH 41: CTH T TO MAPLE ST (MARINETTE COUNTY  
CONTINUOUS (24 HOUR) CLOSURE  
NO DIVERSION ROUTE (MAX QUEUE METHOD)**

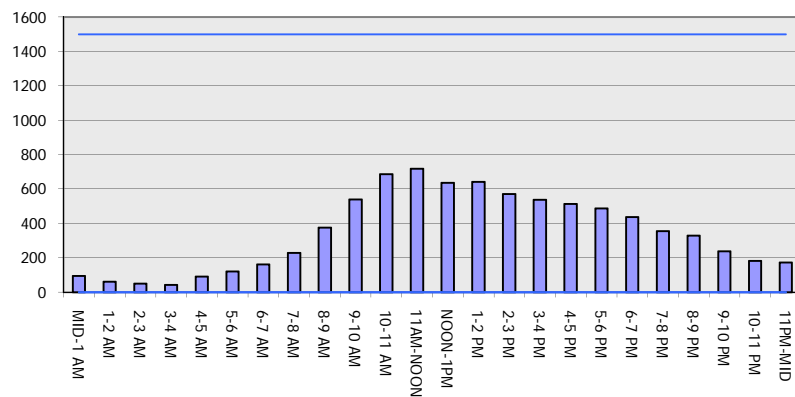
**AUGUST**

Analyzed for 2009  
Construction Season

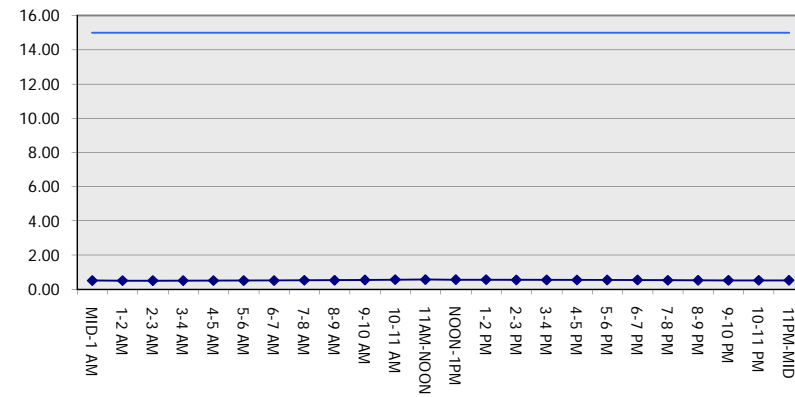
**GRAPHICAL REPRESENTATION OF TRAFFIC MODEL INPUT AND OUTPUT**

**SATURDAY NORTHBOUND DIRECTION**

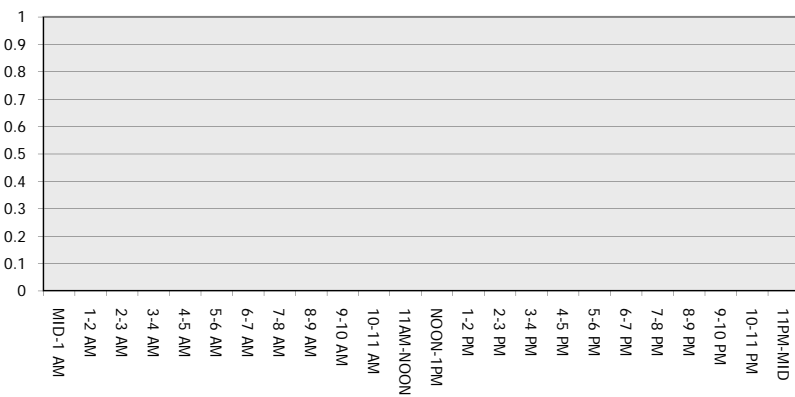
**Main Route - Traffic Demand (Vehicles Per Hour)**



**Main Route Average Delay Per Vehicle (Minutes)**



**Main Route - Average Queue Length (Vehicles)**



**Main Route - Average Speed (MPH)**

