

<b>USH 41: CTH T TO MAPLE ST (MARINETTE COUNTY CONTINUOUS (24 HOUR) CLOSURE NO DIVERSION ROUTE (MAX QUEUE METHOD)</b>	<b>MAY</b>
	Analyzed for 2009 Construction Season

**SUMMARY OF TRAFFIC MODEL OUTPUT**

MON-THUR                  SOUTHBOUND DIRECTION

TIME OF DAY	FLOWS AND CAPACITY IN VEH/HR						AVERAGE SPEEDS IN MPH				
	MAIN ROUTE		SITE CAPA CITY	FLOW		AV.DEL PER VEH (MINS)	AVERAGE QUEUE (VEH)	MAIN ROUTE		SITE	
	DEMAND FLOW	PCT HEAVY		MAIN ROUTE	'DIVER TED'			WITHOUT WORK ZONE	WITH WORK ZONE		
MID-1 AM	43	0.0	1500	43	0	0.50	0	63.8	57.2	41.9	
1-2 AM	41	0.0	1500	41	0	0.50	0	63.8	57.2	41.9	
2-3 AM	36	0.0	1500	36	0	0.50	0	63.8	57.2	41.9	
3-4 AM	45	0.0	1500	45	0	0.50	0	63.8	57.1	41.9	
4-5 AM	99	0.0	1500	99	0	0.51	0	63.7	57.0	41.7	
5-6 AM	267	0.0	1500	267	0	0.52	0	63.4	56.6	41.0	
6-7 AM	327	0.0	1500	327	0	0.53	0	63.3	56.4	40.9	
7-8 AM	483	0.0	1500	483	0	0.54	0	63.0	56.0	40.4	
8-9 AM	419	0.0	1500	419	0	0.54	0	63.1	56.2	40.6	
9-10 AM	461	0.0	1500	461	0	0.54	0	63.0	56.1	40.4	
10-11 AM	500	0.0	1500	500	0	0.55	0	63.0	56.0	40.3	
11AM-NOON	562	0.0	1500	562	0	0.55	0	62.8	55.8	40.1	
NOON-1PM	598	0.0	1500	598	0	0.56	0	62.8	55.8	40.0	
1-2 PM	599	0.0	1500	599	0	0.56	0	62.8	55.8	40.0	
2-3 PM	706	0.0	1500	706	0	0.57	0	62.6	55.5	39.6	
3-4 PM	870	0.0	1500	870	0	0.58	0	62.3	55.1	39.1	
4-5 PM	781	0.0	1500	781	0	0.57	0	62.5	55.3	39.4	
5-6 PM	627	0.0	1500	627	0	0.56	0	62.7	55.6	39.9	
6-7 PM	448	0.0	1500	448	0	0.54	0	63.1	56.1	40.5	
7-8 PM	341	0.0	1500	341	0	0.53	0	63.3	56.4	40.8	
8-9 PM	268	0.0	1500	268	0	0.52	0	63.4	56.6	41.0	
9-10 PM	178	0.0	1500	178	0	0.52	0	63.6	56.8	41.4	
10-11 PM	140	0.0	1500	140	0	0.51	0	63.7	56.9	41.5	
11PM-MID	93	0.0	1500	93	0	0.51	0	63.7	57.0	41.7	

**\*----- SITE BREAKDOWN DELAYS -----\***

BREAKDOWN DURATION (MINS)	0
RANGE OF QUEUE DELAY - MIN (VEH-H) MAX	0.0
AV BREAKDOWNS PER DAY	0.00
AV QUEUE DELAY/DAY (VEH-H)	0.0
AV TOTAL DELAY/DAY (VEH-H)	0.0

**\*----- SITE ACCIDENT DELAYS -----\***

BREAKDOWN DURATION (MINS)	0
RANGE OF QUEUE DELAY - MIN (VEH-H) MAX	0
AV BREAKDOWNS PER DAY	0
AV QUEUE DELAY/DAY (VEH-H)	0
AV TOTAL DELAY/DAY (VEH-H)	0

**AVERAGE ACCIDENT NUMBERS (PIA/DAY)**

MAIN ROUTE WITHOUT WORKS	0.0068
MAIN ROUTE WITH WORKS	0.0077
'DIVERSION'	0.0000

PIA: Personal Injury Accidents

**IMPACTS ON ROAD USERS**

ROAD USER COSTS PER DAY	\$999
CONGESTED HOURS PER DAY*	0

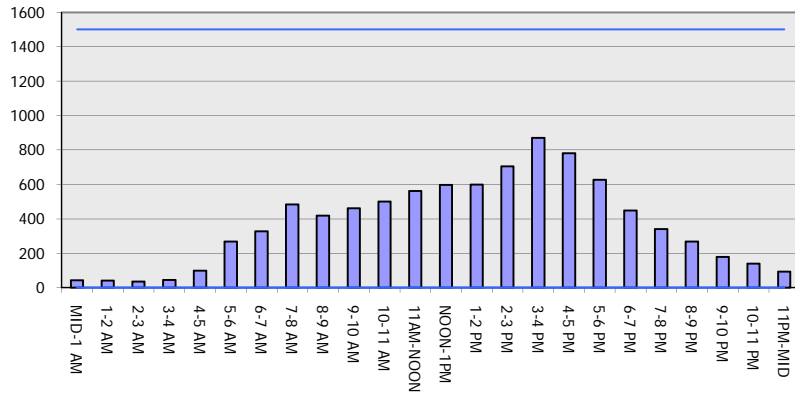
\*Delays Exceeding User-Specified Maximum

**USH 41: CTH T TO MAPLE ST (MARINETTE COUNTY  
CONTINUOUS (24 HOUR) CLOSURE  
NO DIVERSION ROUTE (MAX QUEUE METHOD)**

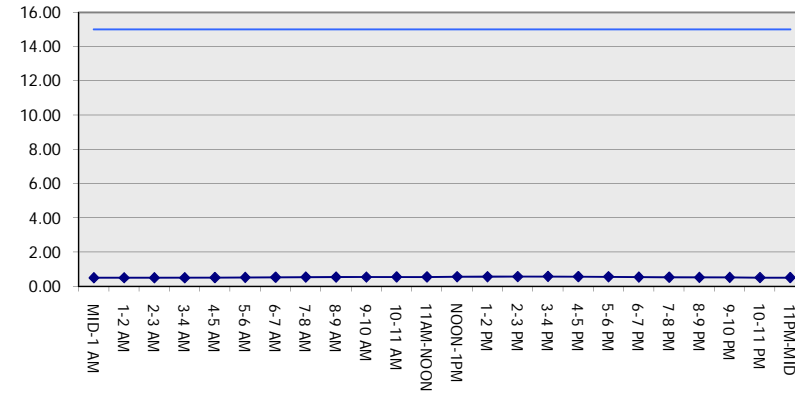
**MAY**  
Analyzed for 2009  
Construction Season

**GRAPHICAL REPRESENTATION OF TRAFFIC MODEL INPUT AND OUTPUT**  
**MON-THUR SOUTHBOUND DIRECTION**

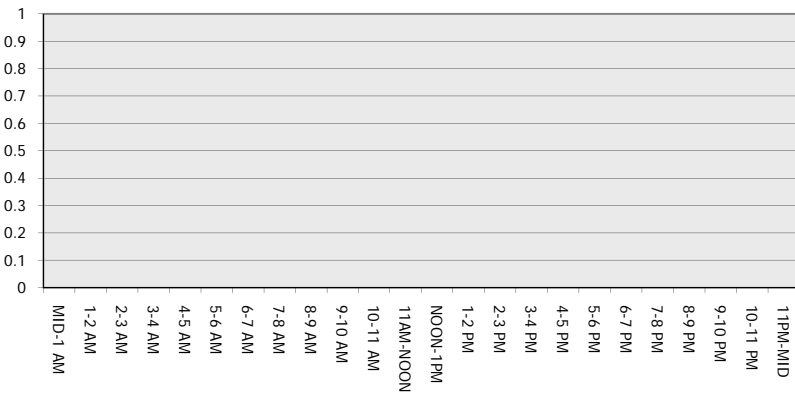
**Main Route - Traffic Demand (Vehicles Per Hour)**



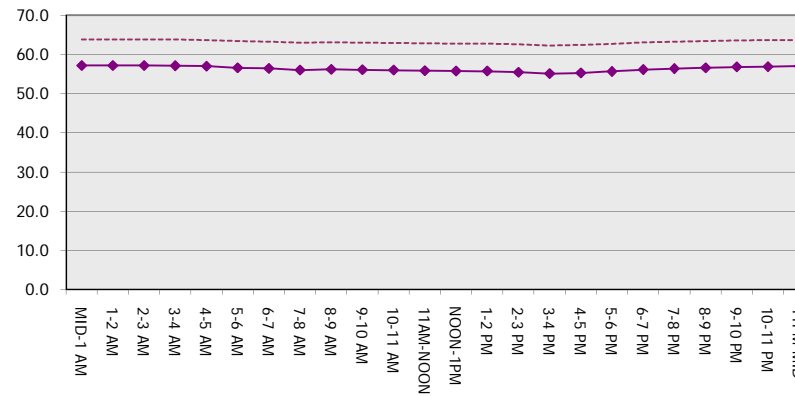
**Main Route Average Delay Per Vehicle (Minutes)**



**Main Route - Average Queue Length (Vehicles)**



**Main Route - Average Speed (MPH)**



<b>USH 41: CTH T TO MAPLE ST (MARINETTE COUNTY CONTINUOUS (24 HOUR) CLOSURE NO DIVERSION ROUTE (MAX QUEUE METHOD)</b>	<b>MAY</b>
	Analyzed for 2009 Construction Season

**SUMMARY OF TRAFFIC MODEL OUTPUT**

MON-THUR                      NORTHBOUND DIRECTION

TIME OF DAY	FLOWS AND CAPACITY IN VEH/HR							AVERAGE SPEEDS IN MPH		
	MAIN ROUTE		SITE CAPA CITY	FLOW		AV.DEL PER VEH (MINS)	AVERAGE QUEUE (VEH)	MAIN ROUTE		SITE
	DEMAND FLOW	PCT HEAVY		MAIN ROUTE	'DIVER TED'			WITHOUT WORK ZONE	WITH WORK ZONE	
MID-1 AM	46	0.0	1500	46	0	0.50	0	63.8	57.1	41.9
1-2 AM	41	0.0	1500	41	0	0.50	0	63.8	57.2	41.9
2-3 AM	31	0.0	1500	31	0	0.50	0	63.8	57.2	41.9
3-4 AM	44	0.0	1500	44	0	0.50	0	63.8	57.2	41.9
4-5 AM	145	0.0	1500	145	0	0.51	0	63.7	56.9	41.5
5-6 AM	267	0.0	1500	267	0	0.52	0	63.4	56.6	41.0
6-7 AM	454	0.0	1500	454	0	0.54	0	63.0	56.1	40.4
7-8 AM	605	0.0	1500	605	0	0.56	0	62.8	55.7	39.9
8-9 AM	590	0.0	1500	590	0	0.55	0	62.8	55.8	40.0
9-10 AM	520	0.0	1500	520	0	0.55	0	62.9	56.0	40.2
10-11 AM	525	0.0	1500	525	0	0.55	0	62.9	56.0	40.2
11AM-NOON	555	0.0	1500	555	0	0.55	0	62.8	55.8	40.1
NOON-1PM	558	0.0	1500	558	0	0.55	0	62.8	55.8	40.1
1-2 PM	558	0.0	1500	558	0	0.55	0	62.8	55.8	40.1
2-3 PM	678	0.0	1500	678	0	0.56	0	62.7	55.5	39.7
3-4 PM	686	0.0	1500	686	0	0.56	0	62.6	55.5	39.7
4-5 PM	686	0.0	1500	686	0	0.56	0	62.6	55.5	39.7
5-6 PM	603	0.0	1500	603	0	0.56	0	62.8	55.7	39.9
6-7 PM	440	0.0	1500	440	0	0.54	0	63.1	56.1	40.5
7-8 PM	323	0.0	1500	323	0	0.53	0	63.3	56.4	40.9
8-9 PM	253	0.0	1500	253	0	0.52	0	63.4	56.6	41.1
9-10 PM	195	0.0	1500	195	0	0.52	0	63.5	56.8	41.3
10-11 PM	150	0.0	1500	150	0	0.51	0	63.6	56.9	41.5
11PM-MID	77	0.0	1500	77	0	0.51	0	63.8	57.1	41.7

*----- SITE BREAKDOWN DELAYS -----*	
BREAKDOWN DURATION (MINS)	0
RANGE OF QUEUE DELAY - MIN (VEH-H) MAX	0.0
AV BREAKDOWNS PER DAY	0.00
AV QUEUE DELAY/DAY (VEH-H)	0.0
AV TOTAL DELAY/DAY (VEH-H)	0.0

*----- SITE ACCIDENT DELAYS -----*	
BREAKDOWN DURATION (MINS)	0
RANGE OF QUEUE DELAY - MIN (VEH-H) MAX	0
AV BREAKDOWNS PER DAY	0
AV QUEUE DELAY/DAY (VEH-H)	0
AV TOTAL DELAY/DAY (VEH-H)	0

AVERAGE ACCIDENT NUMBERS (PIA/DAY)	
MAIN ROUTE WITHOUT WORKS	0.0068
MAIN ROUTE WITH WORKS	0.0078
'DIVERSION'	0.0000

PIA: Personal Injury Accidents

ECONOMIC IMPACT ON ROAD USERS	
ROAD USER COSTS PER DAY	\$1,004
CONGESTED HOURS PER DAY*	0

\*Delays Exceeding User-Specified Maximum

**USH 41: CTH T TO MAPLE ST (MARINETTE COUNTY  
CONTINUOUS (24 HOUR) CLOSURE  
NO DIVERSION ROUTE (MAX QUEUE METHOD)**

**MAY**  
Analyzed for 2009  
Construction Season

**GRAPHICAL REPRESENTATION OF TRAFFIC MODEL INPUT AND OUTPUT**  
**MON-THUR NORTHBOUND DIRECTION**

