

USH 41: CTH B TO CTH M (BROWN COUNTY) CONTINUOUS (24 HOUR) CLOSURE NO DIVERSION ROUTE (MAX QUEUE METHOD)	OCTOBER
	Analyzed for 2009 Construction Season

SUMMARY OF TRAFFIC MODEL OUTPUT

SUNDAY SOUTHBOUND DIRECTION

TIME OF DAY	FLOWS AND CAPACITY IN VEH/HR						AVERAGE SPEEDS IN MPH				
	MAIN ROUTE		SITE CAPA CITY	FLOW		AV.DEL PER VEH (MINS)	AVERAGE QUEUE (VEH)	MAIN ROUTE		SITE	
	DEMAND FLOW	PCT HEAVY		MAIN ROUTE	'DIVER TED'			WITHOUT WORK ZONE	WITH WORK ZONE		
MID-1 AM	137	0.0	1500	137	0	0.44	0	66.1	57.3	45.0	
1-2 AM	78	0.0	1500	78	0	0.43	0	66.3	57.4	45.2	
2-3 AM	62	0.0	1500	62	0	0.43	0	66.3	57.5	45.3	
3-4 AM	57	0.0	1500	57	0	0.43	0	66.3	57.5	45.3	
4-5 AM	120	0.0	1500	120	0	0.43	0	66.1	57.3	45.0	
5-6 AM	304	0.0	1500	304	0	0.45	0	65.8	56.8	44.3	
6-7 AM	299	0.0	1500	299	0	0.45	0	65.8	56.8	44.3	
7-8 AM	565	0.0	1500	565	0	0.48	0	65.3	56.0	43.3	
8-9 AM	1100	0.0	1499	1100	0	0.61	0	64.3	53.1	39.2	
9-10 AM	1855	0.0	1499	1855	0	5.17	145	62.9	22.9	30.8	
10-11 AM	2130	0.0	1499	1503	627	16.09+	407	62.4	10.4	30.8	
11AM-NOON	1952	0.0	1500	1503	448	16.09+	407	62.7	10.4	30.8	
NOON-1PM	1744	0.0	1500	1532	211	15.97+	403	63.2	10.4	30.8	
1-2 PM	1835	0.0	1500	1501	335	16.11+	407	63.0	10.4	30.8	
2-3 PM	1832	0.0	1500	1501	332	16.11+	407	63.0	10.4	30.8	
3-4 PM	1456	0.0	1500	1456	0	15.08+	379	63.7	10.7	30.8	
4-5 PM	1620	0.0	1500	1554	66	15.56+	392	63.3	10.6	30.8	
5-6 PM	1551	0.0	1500	1503	48	16.11+	407	63.5	10.4	30.8	
6-7 PM	1259	0.0	1499	1259	0	11.89+	304	64.0	12.7	31.1	
7-8 PM	997	0.0	1500	997	0	1.27	32	64.5	44.8	40.5	
8-9 PM	664	0.0	1500	664	0	0.49	0	65.1	55.6	42.9	
9-10 PM	383	0.0	1500	383	0	0.46	0	65.7	56.5	44.0	
10-11 PM	234	0.0	1500	234	0	0.45	0	66.0	56.9	44.5	
11PM-MID	109	0.0	1500	109	0	0.43	0	66.2	57.3	45.0	

+ INDICATES QUEUEING EXCEEDS USER-SPECIFIED MAXIMUM LIMIT

----- SITE BREAKDOWN DELAYS -----	
BREAKDOWN DURATION (MINS)	0
RANGE OF QUEUE DELAY - MIN (VEH-H) MAX	0.0
AV BREAKDOWNS PER DAY	0.00
AV QUEUE DELAY/DAY (VEH-H)	0.0
AV TOTAL DELAY/DAY (VEH-H)	0.0

----- SITE ACCIDENT DELAYS -----	
BREAKDOWN DURATION (MINS)	0
RANGE OF QUEUE DELAY - MIN (VEH-H) MAX	0
AV BREAKDOWNS PER DAY	0
AV QUEUE DELAY/DAY (VEH-H)	0
AV TOTAL DELAY/DAY (VEH-H)	0

AVERAGE ACCIDENT NUMBERS (PIA/DAY)	
MAIN ROUTE WITHOUT WORKS	0.0110
MAIN ROUTE WITH WORKS	0.0087
'DIVERSION'	0.0024
<small>PIA: Personal Injury Accidents</small>	
IMPACTS ON ROAD USERS	
ROAD USER COSTS PER DAY	\$71,475
CONGESTED HOURS PER DAY*	9

*Delays Exceeding User-Specified Maximum

**USH 41: CTH B TO CTH M (BROWN COUNTY)
CONTINUOUS (24 HOUR) CLOSURE
NO DIVERSION ROUTE (MAX QUEUE METHOD)**

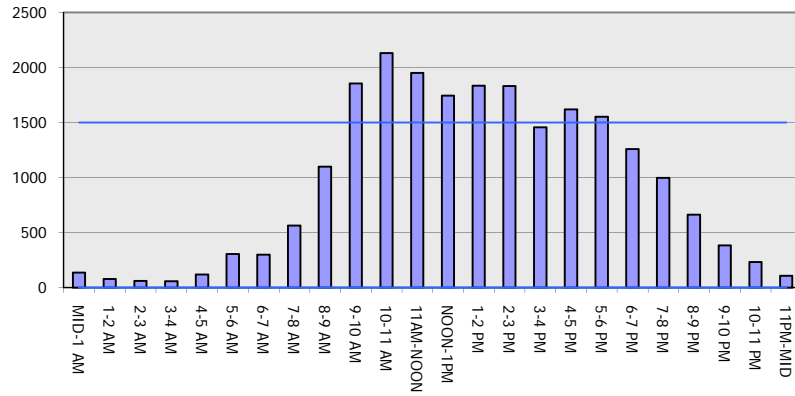
OCTOBER

Analyzed for 2009
Construction Season

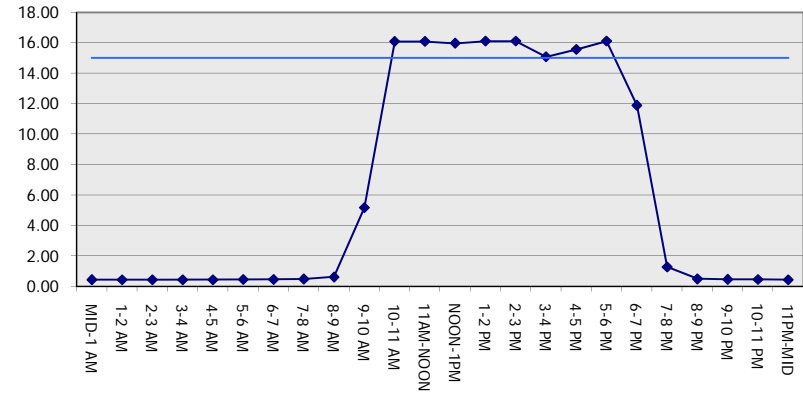
GRAPHICAL REPRESENTATION OF TRAFFIC MODEL INPUT AND OUTPUT

SUNDAY SOUTHBOUND DIRECTION

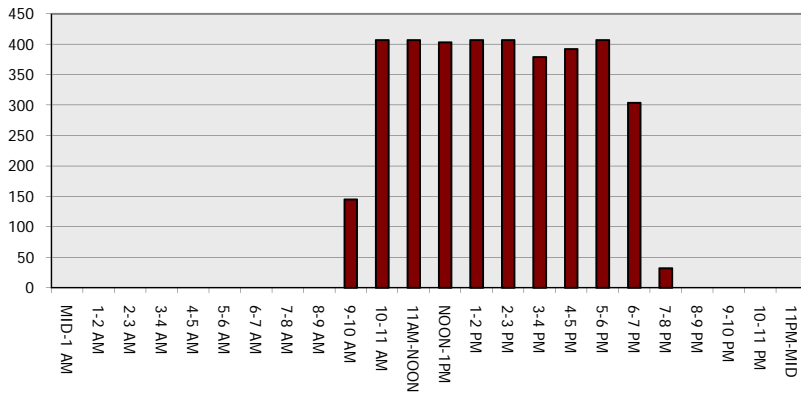
Main Route - Traffic Demand (Vehicles Per Hour)



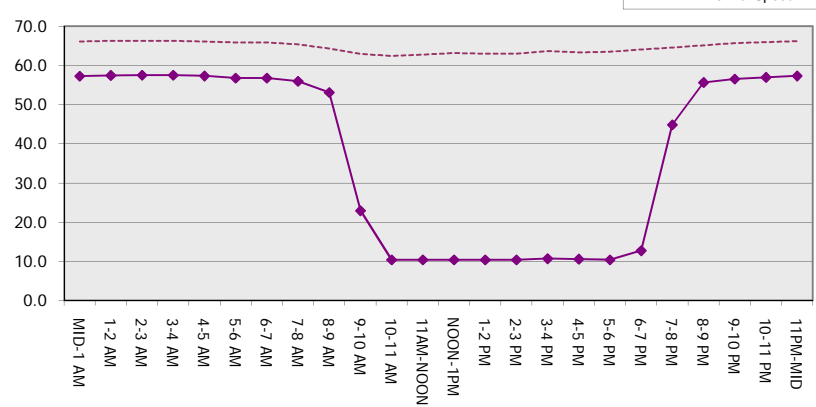
Main Route Average Delay Per Vehicle (Minutes)



Main Route - Average Queue Length (Vehicles)



Main Route - Average Speed (MPH)



USH 41: CTH B TO CTH M (BROWN COUNTY) CONTINUOUS (24 HOUR) CLOSURE NO DIVERSION ROUTE (MAX QUEUE METHOD)	OCTOBER
	Analyzed for 2009 Construction Season

SUMMARY OF TRAFFIC MODEL OUTPUT

SUNDAY NORTHBOUND DIRECTION

TIME OF DAY	FLOWS AND CAPACITY IN VEH/HR							AVERAGE SPEEDS IN MPH		
	MAIN ROUTE		SITE CAPA CITY	FLOW		AV.DEL PER VEH (MINS)	AVERAGE QUEUE (VEH)	MAIN ROUTE		SITE
	DEMAND FLOW	PCT HEAVY		MAIN ROUTE	'DIVER TED'			WITHOUT WORK ZONE	WITH WORK ZONE	
MID-1 AM	259	0.0	1500	259	0	0.45	0	65.9	56.9	44.5
1-2 AM	144	0.0	1500	144	0	0.44	0	66.1	57.3	44.9
2-3 AM	122	0.0	1500	122	0	0.43	0	66.1	57.3	45.0
3-4 AM	73	0.0	1500	73	0	0.43	0	66.3	57.4	45.2
4-5 AM	94	0.0	1500	94	0	0.43	0	66.2	57.4	45.1
5-6 AM	151	0.0	1500	151	0	0.44	0	66.1	57.2	44.9
6-7 AM	254	0.0	1500	254	0	0.45	0	65.9	56.9	44.5
7-8 AM	309	0.0	1500	309	0	0.45	0	65.8	56.7	44.3
8-9 AM	406	0.0	1500	406	0	0.46	0	65.6	56.4	43.8
9-10 AM	595	0.0	1500	595	0	0.48	0	65.3	55.9	43.2
10-11 AM	818	0.0	1500	818	0	0.50	0	64.8	55.2	42.4
11AM-NOON	1016	0.0	1500	1016	0	0.52	0	64.5	54.6	41.6
NOON-1PM	979	0.0	1500	979	0	0.52	0	64.6	54.7	41.7
1-2 PM	986	0.0	1500	986	0	0.52	0	64.5	54.7	41.7
2-3 PM	1058	0.0	1500	1058	0	0.52	0	64.4	54.5	41.5
3-4 PM	1312	0.0	1499	1312	0	0.78	0	64.0	50.4	35.2
4-5 PM	1529	0.0	1499	1529	0	1.53	14	63.5	41.7	30.8
5-6 PM	1316	0.0	1500	1316	0	0.90	3	64.0	48.8	35.0
6-7 PM	1005	0.0	1500	1005	0	0.52	0	64.5	54.6	41.7
7-8 PM	696	0.0	1500	696	0	0.49	0	65.1	55.6	42.8
8-9 PM	473	0.0	1500	473	0	0.47	0	65.5	56.2	43.6
9-10 PM	277	0.0	1500	277	0	0.45	0	65.9	56.8	44.4
10-11 PM	216	0.0	1500	216	0	0.44	0	66.0	57.0	44.6
11PM-MID	141	0.0	1500	141	0	0.44	0	66.1	57.3	44.9

----- SITE BREAKDOWN DELAYS -----	
BREAKDOWN DURATION (MINS)	0
RANGE OF QUEUE DELAY - MIN (VEH-H) MAX	0.0
AV BREAKDOWNS PER DAY	0.00
AV QUEUE DELAY/DAY (VEH-H)	0.0
AV TOTAL DELAY/DAY (VEH-H)	0.0

----- SITE ACCIDENT DELAYS -----	
BREAKDOWN DURATION (MINS)	0
RANGE OF QUEUE DELAY - MIN (VEH-H) MAX	0
AV BREAKDOWNS PER DAY	0
AV QUEUE DELAY/DAY (VEH-H)	0
AV TOTAL DELAY/DAY (VEH-H)	0

AVERAGE ACCIDENT NUMBERS (PIA/DAY)	
MAIN ROUTE WITHOUT WORKS	0.0070
MAIN ROUTE WITH WORKS	0.0061
'DIVERSION'	0.0000

PIA: Personal Injury Accidents

ECONOMIC IMPACT ON ROAD USERS	
ROAD USER COSTS PER DAY	\$2,693
CONGESTED HOURS PER DAY*	0

*Delays Exceeding User-Specified Maximum

**USH 41: CTH B TO CTH M (BROWN COUNTY)
CONTINUOUS (24 HOUR) CLOSURE
NO DIVERSION ROUTE (MAX QUEUE METHOD)**

OCTOBER

Analyzed for 2009
Construction Season

GRAPHICAL REPRESENTATION OF TRAFFIC MODEL INPUT AND OUTPUT
SUNDAY NORTHBOUND DIRECTION

