

<b>USH 41: CTH B TO CTH M (BROWN COUNTY)                  CONTINUOUS (24 HOUR) CLOSURE                  NO DIVERSION ROUTE (MAX QUEUE METHOD)</b>	<b>OCTOBER</b>
	Analyzed for 2009 Construction Season

**SUMMARY OF TRAFFIC MODEL OUTPUT**

MON-THUR                  SOUTHBOUND DIRECTION

TIME OF DAY	FLOWS AND CAPACITY IN VEH/HR							AVERAGE SPEEDS IN MPH			
	MAIN ROUTE		SITE CAPA CITY	FLOW		AV.DEL PER VEH (MINS)	AVERAGE QUEUE (VEH)	MAIN ROUTE		SITE	
	DEMAND FLOW	PCT HEAVY		MAIN ROUTE	'DIVER TED'			WITHOUT WORK ZONE	WITH WORK ZONE		
MID-1 AM	60	0.0	1500	60	0	0.43	0	66.3	57.5	45.3	
1-2 AM	52	0.0	1500	52	0	0.43	0	66.3	57.5	45.3	
2-3 AM	91	0.0	1500	91	0	0.43	0	66.2	57.4	45.1	
3-4 AM	136	0.0	1500	136	0	0.44	0	66.1	57.3	45.0	
4-5 AM	445	0.0	1500	445	0	0.47	0	65.6	56.3	43.7	
5-6 AM	1303	0.0	1499	1303	0	0.86	3	64.0	49.4	36.1	
6-7 AM	2232	0.0	1500	1829	402	9.86+	279	62.2	14.8	30.8	
7-8 AM	2565	0.0	1500	1515	1050	16.04+	409	60.2	10.3	30.8	
8-9 AM	1601	0.0	1500	1504	96	15.40+	388	63.4	10.6	30.8	
9-10 AM	1228	0.0	1499	1228	0	9.14	238	64.1	15.5	32.0	
10-11 AM	1169	0.0	1500	1169	0	0.95	12	64.2	48.4	38.8	
11AM-NOON	1104	0.0	1500	1104	0	0.53	0	64.3	54.4	41.3	
NOON-1PM	1078	0.0	1500	1078	0	0.53	0	64.4	54.5	41.4	
1-2 PM	1154	0.0	1500	1154	0	0.58	0	64.2	53.5	40.0	
2-3 PM	1173	0.0	1500	1173	0	0.60	0	64.2	53.2	39.3	
3-4 PM	1198	0.0	1500	1198	0	0.63	0	64.1	52.7	38.5	
4-5 PM	1312	0.0	1500	1312	0	0.78	0	64.0	50.4	35.1	
5-6 PM	1164	0.0	1500	1164	0	0.59	0	64.2	53.3	39.6	
6-7 PM	811	0.0	1500	811	0	0.50	0	64.9	55.2	42.4	
7-8 PM	495	0.0	1500	495	0	0.47	0	65.5	56.1	43.5	
8-9 PM	343	0.0	1500	343	0	0.46	0	65.8	56.6	44.1	
9-10 PM	316	0.0	1500	316	0	0.45	0	65.8	56.7	44.2	
10-11 PM	264	0.0	1500	264	0	0.45	0	65.9	56.9	44.4	
11PM-MID	117	0.0	1500	117	0	0.43	0	66.1	57.3	45.0	

+ INDICATES QUEUEING EXCEEDS USER-SPECIFIED MAXIMUM LIMIT

*----- SITE BREAKDOWN DELAYS -----*	
BREAKDOWN DURATION (MINS)	0
RANGE OF QUEUE DELAY - MIN (VEH-H) MAX	0.0
AV BREAKDOWNS PER DAY	0.00
AV QUEUE DELAY/DAY (VEH-H)	0.0
AV TOTAL DELAY/DAY (VEH-H)	0.0

*----- SITE ACCIDENT DELAYS -----*	
BREAKDOWN DURATION (MINS)	0
RANGE OF QUEUE DELAY - MIN (VEH-H) MAX	0
AV BREAKDOWNS PER DAY	0
AV QUEUE DELAY/DAY (VEH-H)	0
AV TOTAL DELAY/DAY (VEH-H)	0

AVERAGE ACCIDENT NUMBERS (PIA/DAY)	
MAIN ROUTE WITHOUT WORKS	0.0106
MAIN ROUTE WITH WORKS	0.0085
'DIVERSION'	0.0018
<small>PIA: Personal Injury Accidents</small>	
IMPACTS ON ROAD USERS	
ROAD USER COSTS PER DAY	\$23,088
CONGESTED HOURS PER DAY*	3

\*Delays Exceeding User-Specified Maximum

**USH 41: CTH B TO CTH M (BROWN COUNTY)  
CONTINUOUS (24 HOUR) CLOSURE  
NO DIVERSION ROUTE (MAX QUEUE METHOD)**

**OCTOBER**

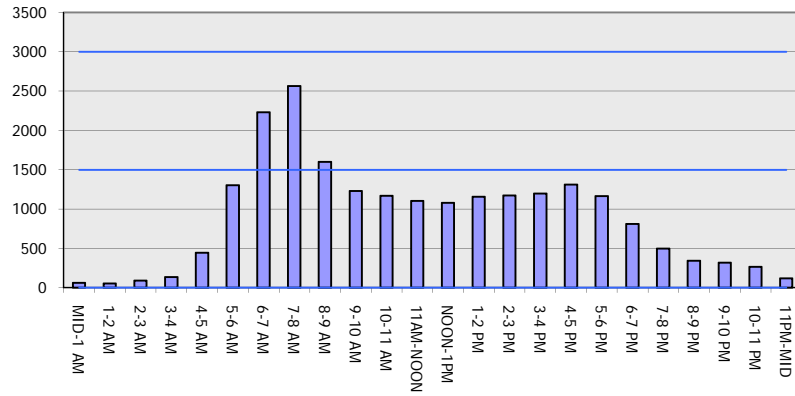
Analyzed for 2009  
Construction Season

**GRAPHICAL REPRESENTATION OF TRAFFIC MODEL INPUT AND OUTPUT**

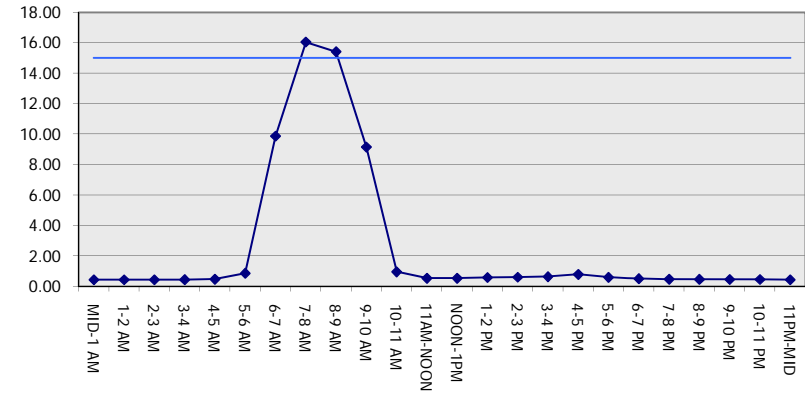
**MON-THUR**

**SOUTHBOUND DIRECTION**

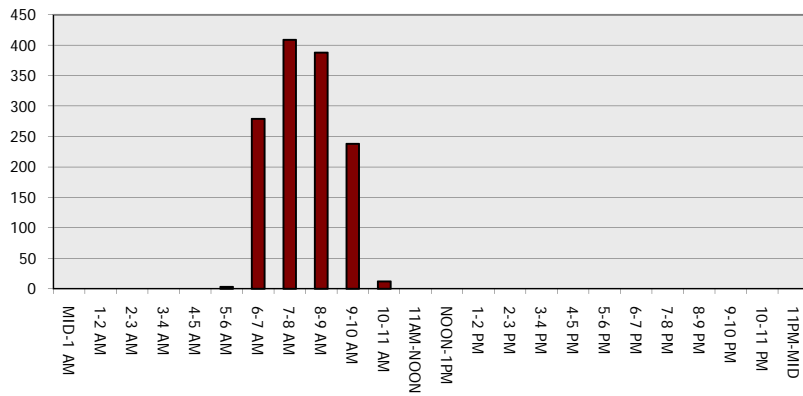
**Main Route - Traffic Demand (Vehicles Per Hour)**



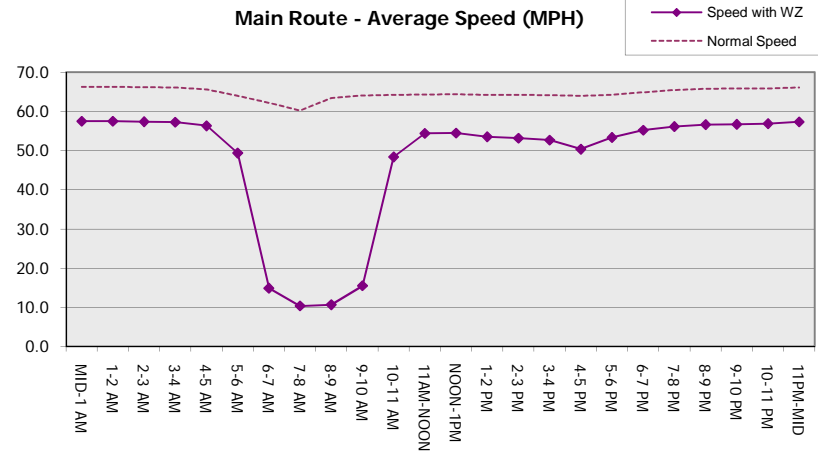
**Main Route Average Delay Per Vehicle (Minutes)**



**Main Route - Average Queue Length (Vehicles)**



**Main Route - Average Speed (MPH)**



<b>USH 41: CTH B TO CTH M (BROWN COUNTY)                  CONTINUOUS (24 HOUR) CLOSURE                  NO DIVERSION ROUTE (MAX QUEUE METHOD)</b>	<b>OCTOBER</b>
	Analyzed for 2009 Construction Season

**SUMMARY OF TRAFFIC MODEL OUTPUT**

MON-THUR                      NORTHBOUND DIRECTION

TIME OF DAY	FLOWS AND CAPACITY IN VEH/HR							AVERAGE SPEEDS IN MPH		
	MAIN ROUTE		SITE CAPA CITY	FLOW		AV.DEL PER VEH (MINS)	AVERAGE QUEUE (VEH)	MAIN ROUTE		SITE
	DEMAND FLOW	PCT HEAVY		MAIN ROUTE	'DIVER TED'			WITHOUT WORK ZONE	WITH WORK ZONE	
MID-1 AM	125	0.0	1500	125	0	0.43	0	66.1	57.3	45.0
1-2 AM	86	0.0	1500	86	0	0.43	0	66.2	57.4	45.1
2-3 AM	93	0.0	1500	93	0	0.43	0	66.2	57.4	45.1
3-4 AM	117	0.0	1500	117	0	0.43	0	66.1	57.3	45.0
4-5 AM	165	0.0	1500	165	0	0.44	0	66.1	57.2	44.8
5-6 AM	342	0.0	1500	342	0	0.46	0	65.8	56.6	44.1
6-7 AM	683	0.0	1500	683	0	0.49	0	65.1	55.6	42.8
7-8 AM	792	0.0	1500	792	0	0.50	0	64.9	55.3	42.4
8-9 AM	762	0.0	1500	762	0	0.50	0	65.0	55.4	42.5
9-10 AM	766	0.0	1500	766	0	0.50	0	65.0	55.3	42.5
10-11 AM	834	0.0	1500	834	0	0.50	0	64.8	55.1	42.3
11AM-NOON	924	0.0	1500	924	0	0.51	0	64.6	54.9	41.9
NOON-1PM	987	0.0	1500	987	0	0.52	0	64.5	54.7	41.7
1-2 PM	1152	0.0	1500	1152	0	0.57	0	64.2	53.6	40.1
2-3 PM	1376	0.0	1499	1376	0	0.86	0	63.8	49.3	33.7
3-4 PM	1974	0.0	1499	1974	0	6.84	204	62.7	19.1	30.8
4-5 PM	2417	0.0	1500	1491	926	16.09+	409	61.7	10.3	30.8
5-6 PM	2355	0.0	1499	1494	861	16.09+	408	62.0	10.3	30.8
6-7 PM	1482	0.0	1499	1332	150	14.54+	366	63.7	11.0	30.8
7-8 PM	972	0.0	1499	972	0	2.40	93	64.6	35.2	38.9
8-9 PM	814	0.0	1500	814	0	0.50	0	64.9	55.2	42.4
9-10 PM	674	0.0	1500	674	0	0.49	0	65.1	55.6	42.8
10-11 PM	402	0.0	1500	402	0	0.46	0	65.6	56.4	43.9
11PM-MID	261	0.0	1500	261	0	0.45	0	65.9	56.9	44.5

+ INDICATES QUEUEING EXCEEDS USER-SPECIFIED MAXIMUM LIMIT

*----- SITE BREAKDOWN DELAYS -----*	
BREAKDOWN DURATION (MINS)	0
RANGE OF QUEUE DELAY - MIN (VEH-H) MAX	0.0
AV BREAKDOWNS PER DAY	0.00
AV QUEUE DELAY/DAY (VEH-H)	0.0
AV TOTAL DELAY/DAY (VEH-H)	0.0

*----- SITE ACCIDENT DELAYS -----*	
BREAKDOWN DURATION (MINS)	0
RANGE OF QUEUE DELAY - MIN (VEH-H) MAX	0
AV BREAKDOWNS PER DAY	0
AV QUEUE DELAY/DAY (VEH-H)	0
AV TOTAL DELAY/DAY (VEH-H)	0

AVERAGE ACCIDENT NUMBERS (PIA/DAY)	
MAIN ROUTE WITHOUT WORKS	0.0101
MAIN ROUTE WITH WORKS	0.0080
'DIVERSION'	0.0022

PIA: Personal Injury Accidents

ECONOMIC IMPACT ON ROAD USERS	
ROAD USER COSTS PER DAY	\$25,796
CONGESTED HOURS PER DAY*	3

\*Delays Exceeding User-Specified Maximum

**USH 41: CTH B TO CTH M (BROWN COUNTY)  
CONTINUOUS (24 HOUR) CLOSURE  
NO DIVERSION ROUTE (MAX QUEUE METHOD)**

**OCTOBER**

Analyzed for 2009  
Construction Season

**GRAPHICAL REPRESENTATION OF TRAFFIC MODEL INPUT AND OUTPUT**  
**MON-THUR NORTHBOUND DIRECTION**

