

<b>USH 41: CTH B TO CTH M (BROWN COUNTY)                  CONTINUOUS (24 HOUR) CLOSURE                  NO DIVERSION ROUTE (MAX QUEUE METHOD)</b>	<b>AUGUST</b>
	Analyzed for 2009 Construction Season

**SUMMARY OF TRAFFIC MODEL OUTPUT**

SUNDAY SOUTHBOUND DIRECTION

TIME OF DAY	FLOWS AND CAPACITY IN VEH/HR						AVERAGE SPEEDS IN MPH			
	MAIN ROUTE		SITE CAPA CITY	FLOW		AV.DEL PER VEH (MINS)	AVERAGE QUEUE (VEH)	MAIN ROUTE		SITE
	DEMAND FLOW	PCT HEAVY		MAIN ROUTE	'DIVER TED'			WITHOUT WORK ZONE	WITH WORK ZONE	
MID-1 AM	166	0.0	1500	166	0	0.44	0	66.1	57.2	44.8
1-2 AM	83	0.0	1500	83	0	0.43	0	66.2	57.4	45.1
2-3 AM	87	0.0	1500	87	0	0.43	0	66.2	57.4	45.1
3-4 AM	76	0.0	1500	76	0	0.43	0	66.3	57.4	45.2
4-5 AM	117	0.0	1500	117	0	0.43	0	66.1	57.3	45.0
5-6 AM	242	0.0	1500	242	0	0.45	0	66.0	56.9	44.5
6-7 AM	278	0.0	1500	278	0	0.45	0	65.9	56.8	44.4
7-8 AM	410	0.0	1500	410	0	0.46	0	65.6	56.4	43.8
8-9 AM	745	0.0	1500	745	0	0.49	0	65.0	55.4	42.6
9-10 AM	1258	0.0	1499	1258	0	0.70	0	64.0	51.5	37.0
10-11 AM	1679	0.0	1499	1679	0	2.79	60	63.3	32.4	30.8
11AM-NOON	2184	0.0	1500	1794	390	14.27+	367	62.3	11.2	30.8
NOON-1PM	2397	0.0	1499	1492	906	16.10+	408	61.9	10.3	30.8
1-2 PM	2312	0.0	1499	1496	816	16.08+	408	62.1	10.4	30.8
2-3 PM	2283	0.0	1499	1497	786	16.08+	408	62.2	10.4	30.8
3-4 PM	2311	0.0	1499	1497	814	16.08+	408	62.1	10.4	30.8
4-5 PM	2144	0.0	1499	1498	646	16.09+	407	62.4	10.4	30.8
5-6 PM	1988	0.0	1499	1495	493	16.09+	407	62.7	10.4	30.8
6-7 PM	1561	0.0	1499	1436	125	15.65+	394	63.5	10.5	30.8
7-8 PM	1246	0.0	1499	1246	0	10.73	277	64.1	13.7	31.6
8-9 PM	906	0.0	1500	906	0	0.89	16	64.7	49.4	41.9
9-10 PM	558	0.0	1500	558	0	0.48	0	65.3	56.0	43.3
10-11 PM	336	0.0	1500	336	0	0.46	0	65.8	56.6	44.2
11PM-MID	148	0.0	1500	148	0	0.44	0	66.1	57.2	44.9

+ INDICATES QUEUEING EXCEEDS USER-SPECIFIED MAXIMUM LIMIT

*----- SITE BREAKDOWN DELAYS -----*	
BREAKDOWN DURATION (MINS)	0
RANGE OF QUEUE DELAY - MIN (VEH-H) MAX	0.0
AV BREAKDOWNS PER DAY	0.00
AV QUEUE DELAY/DAY (VEH-H)	0.0
AV TOTAL DELAY/DAY (VEH-H)	0.0

*----- SITE ACCIDENT DELAYS -----*	
BREAKDOWN DURATION (MINS)	0
RANGE OF QUEUE DELAY - MIN (VEH-H) MAX	0
AV BREAKDOWNS PER DAY	0
AV QUEUE DELAY/DAY (VEH-H)	0
AV TOTAL DELAY/DAY (VEH-H)	0

AVERAGE ACCIDENT NUMBERS (PIA/DAY)	
MAIN ROUTE WITHOUT WORKS	0.0126
MAIN ROUTE WITH WORKS	0.0088
'DIVERSION'	0.0057
<small>PIA: Personal Injury Accidents</small>	
IMPACTS ON ROAD USERS	
ROAD USER COSTS PER DAY	\$82,248
CONGESTED HOURS PER DAY*	8

\*Delays Exceeding User-Specified Maximum

**USH 41: CTH B TO CTH M (BROWN COUNTY)  
CONTINUOUS (24 HOUR) CLOSURE  
NO DIVERSION ROUTE (MAX QUEUE METHOD)**

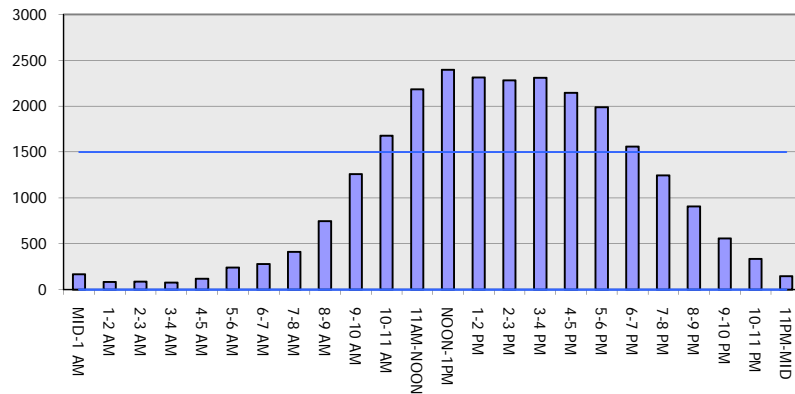
**AUGUST**

Analyzed for 2009  
Construction Season

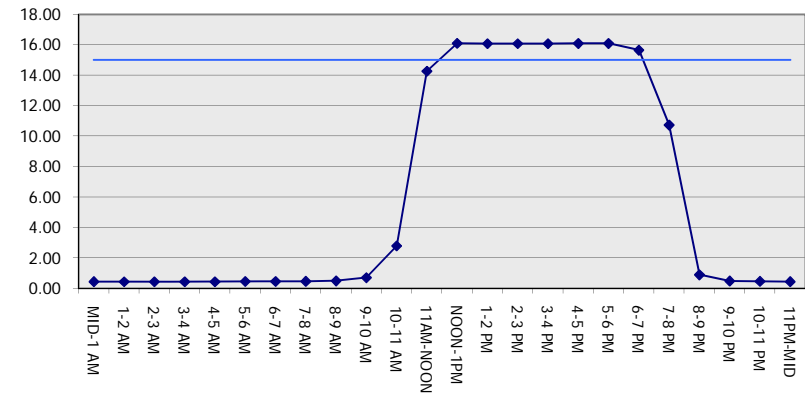
**GRAPHICAL REPRESENTATION OF TRAFFIC MODEL INPUT AND OUTPUT**

**SUNDAY SOUTHBOUND DIRECTION**

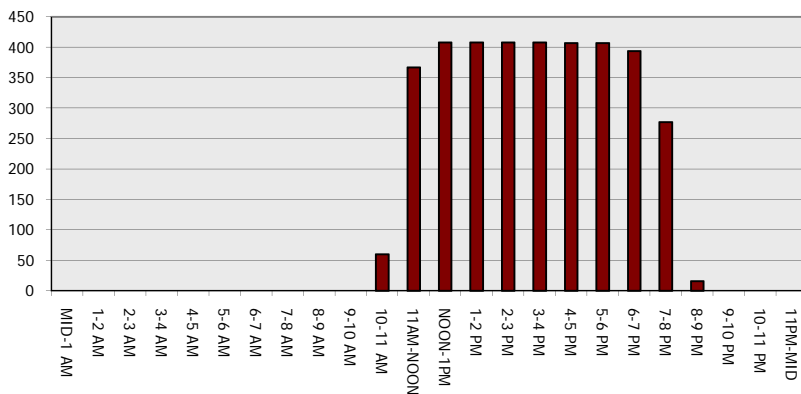
**Main Route - Traffic Demand (Vehicles Per Hour)**



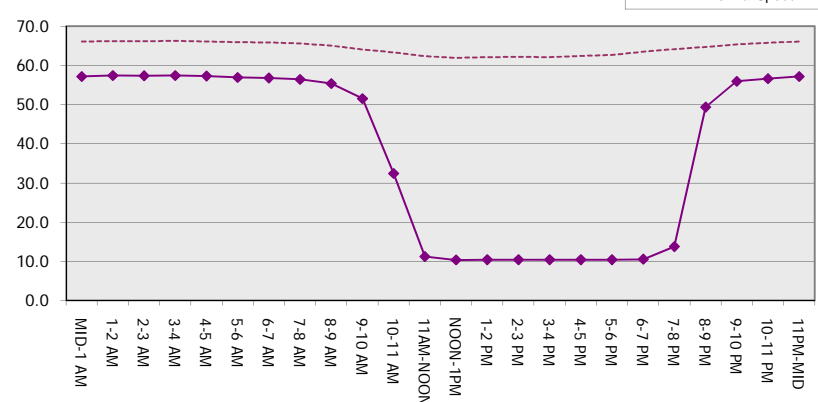
**Main Route Average Delay Per Vehicle (Minutes)**



**Main Route - Average Queue Length (Vehicles)**



**Main Route - Average Speed (MPH)**



<b>USH 41: CTH B TO CTH M (BROWN COUNTY)                  CONTINUOUS (24 HOUR) CLOSURE                  NO DIVERSION ROUTE (MAX QUEUE METHOD)</b>	<b>AUGUST</b>
	Analyzed for 2009 Construction Season

**SUMMARY OF TRAFFIC MODEL OUTPUT**

SUNDAY NORTHBOUND DIRECTION

TIME OF DAY	FLOWS AND CAPACITY IN VEH/HR						AVERAGE SPEEDS IN MPH			
	MAIN ROUTE		SITE CAPA CITY	FLOW		AV.DEL PER VEH (MINS)	AVERAGE QUEUE (VEH)	MAIN ROUTE		SITE
	DEMAND FLOW	PCT HEAVY		MAIN ROUTE	'DIVER TED'			WITHOUT WORK ZONE	WITH WORK ZONE	
MID-1 AM	240	0.0	1500	240	0	0.45	0	66.0	56.9	44.5
1-2 AM	144	0.0	1500	144	0	0.44	0	66.1	57.3	44.9
2-3 AM	116	0.0	1500	116	0	0.43	0	66.2	57.3	45.0
3-4 AM	76	0.0	1500	76	0	0.43	0	66.3	57.4	45.2
4-5 AM	64	0.0	1500	64	0	0.43	0	66.3	57.5	45.2
5-6 AM	107	0.0	1500	107	0	0.43	0	66.2	57.3	45.1
6-7 AM	236	0.0	1500	236	0	0.45	0	66.0	56.9	44.5
7-8 AM	296	0.0	1500	296	0	0.45	0	65.8	56.8	44.3
8-9 AM	436	0.0	1500	436	0	0.46	0	65.6	56.3	43.8
9-10 AM	694	0.0	1500	694	0	0.49	0	65.1	55.6	42.8
10-11 AM	1014	0.0	1500	1014	0	0.52	0	64.5	54.6	41.6
11AM-NOON	1240	0.0	1500	1240	0	0.69	0	64.1	51.8	37.2
NOON-1PM	1329	0.0	1500	1329	0	0.80	0	63.9	50.1	34.7
1-2 PM	1361	0.0	1500	1361	0	0.84	0	63.8	49.5	33.9
2-3 PM	1339	0.0	1500	1339	0	0.82	0	63.9	49.9	34.5
3-4 PM	1366	0.0	1500	1366	0	0.85	0	63.8	49.4	33.8
4-5 PM	1292	0.0	1500	1292	0	0.76	0	64.0	50.8	35.7
5-6 PM	1185	0.0	1500	1185	0	0.62	0	64.1	52.9	38.9
6-7 PM	1024	0.0	1500	1024	0	0.52	0	64.5	54.6	41.6
7-8 PM	785	0.0	1500	785	0	0.50	0	64.9	55.3	42.4
8-9 PM	622	0.0	1500	622	0	0.48	0	65.2	55.8	43.0
9-10 PM	420	0.0	1500	420	0	0.46	0	65.6	56.4	43.8
10-11 PM	314	0.0	1500	314	0	0.45	0	65.8	56.7	44.2
11PM-MID	208	0.0	1500	208	0	0.44	0	66.0	57.0	44.6

*----- SITE BREAKDOWN DELAYS -----*	
BREAKDOWN DURATION (MINS)	0
RANGE OF QUEUE DELAY - MIN (VEH-H) MAX	0.0
AV BREAKDOWNS PER DAY	0.00
AV QUEUE DELAY/DAY (VEH-H)	0.0
AV TOTAL DELAY/DAY (VEH-H)	0.0

*----- SITE ACCIDENT DELAYS -----*	
BREAKDOWN DURATION (MINS)	0
RANGE OF QUEUE DELAY - MIN (VEH-H) MAX	0
AV BREAKDOWNS PER DAY	0
AV QUEUE DELAY/DAY (VEH-H)	0
AV TOTAL DELAY/DAY (VEH-H)	0

AVERAGE ACCIDENT NUMBERS (PIA/DAY)	
MAIN ROUTE WITHOUT WORKS	0.0078
MAIN ROUTE WITH WORKS	0.0068
'DIVERSION'	0.0000

PIA: Personal Injury Accidents

ECONOMIC IMPACT ON ROAD USERS	
ROAD USER COSTS PER DAY	\$2,898
CONGESTED HOURS PER DAY*	0

\*Delays Exceeding User-Specified Maximum

**USH 41: CTH B TO CTH M (BROWN COUNTY)  
CONTINUOUS (24 HOUR) CLOSURE  
NO DIVERSION ROUTE (MAX QUEUE METHOD)**

**AUGUST**  
Analyzed for 2009  
Construction Season

**GRAPHICAL REPRESENTATION OF TRAFFIC MODEL INPUT AND OUTPUT**  
**SUNDAY NORTHBOUND DIRECTION**

