

IH 43: STH 54/57 TO STH 172 (BROWN COUNTY) CONTINUOUS (24 HOUR) CLOSURE NO DIVERSION ROUTE (MAX QUEUE METHOD)	OCTOBER
	Analyzed for 2009 Construction Season

SUMMARY OF TRAFFIC MODEL OUTPUT

MON-THUR SOUTHBOUND DIRECTION

TIME OF DAY	FLOWS AND CAPACITY IN VEH/HR							AVERAGE SPEEDS IN MPH			
	MAIN ROUTE		SITE CAPA CITY	FLOW		AV.DEL PER VEH (MINS)	AVERAGE QUEUE (VEH)	MAIN ROUTE		SITE	
	DEMAND FLOW	PCT HEAVY		MAIN ROUTE	'DIVER TED'			WITHOUT WORK ZONE	WITH WORK ZONE		
MID-1 AM	91	0.0	1500	91	0	0.43	0	66.2	60.5	45.1	
1-2 AM	62	0.0	1500	62	0	0.43	0	66.3	60.7	45.3	
2-3 AM	71	0.0	1500	71	0	0.43	0	66.3	60.6	45.2	
3-4 AM	107	0.0	1500	107	0	0.43	0	66.2	60.5	45.1	
4-5 AM	269	0.0	1500	269	0	0.45	0	65.9	60.1	44.4	
5-6 AM	789	0.0	1500	789	0	0.50	0	64.9	58.7	42.4	
6-7 AM	1612	0.0	1499	1612	0	2.04	36	63.4	44.6	31.5	
7-8 AM	2202	0.0	1500	1770	432	13.66+	354	62.3	16.5	31.5	
8-9 AM	1527	0.0	1499	1451	76	15.64+	394	63.5	15.0	30.8	
9-10 AM	1251	0.0	1499	1251	0	9.73	247	64.0	21.1	31.4	
10-11 AM	1309	0.0	1500	1309	0	1.83	32	64.0	46.3	33.9	
11AM-NOON	1383	0.0	1500	1383	0	0.87	0	63.8	54.0	33.3	
NOON-1PM	1465	0.0	1500	1465	0	0.98	0	63.7	52.9	31.5	
1-2 PM	1440	0.0	1499	1440	0	0.95	0	63.7	53.2	32.0	
2-3 PM	1583	0.0	1499	1583	0	2.06	30	63.5	44.5	30.8	
3-4 PM	1797	0.0	1500	1797	0	8.39	216	63.0	23.1	30.8	
4-5 PM	2068	0.0	1499	1500	568	15.77+	399	62.5	14.8	30.8	
5-6 PM	1898	0.0	1500	1500	398	15.80+	400	62.8	14.8	30.8	
6-7 PM	1308	0.0	1500	1308	0	12.43	314	64.0	17.8	31.1	
7-8 PM	908	0.0	1500	908	0	1.36	34	64.7	50.2	41.6	
8-9 PM	677	0.0	1500	677	0	0.49	0	65.1	59.0	42.8	
9-10 PM	498	0.0	1500	498	0	0.47	0	65.5	59.5	43.5	
10-11 PM	322	0.0	1500	322	0	0.45	0	65.8	59.9	44.2	
11PM-MID	183	0.0	1500	183	0	0.44	0	66.1	60.3	44.8	

+ INDICATES QUEUEING EXCEEDS USER-SPECIFIED MAXIMUM LIMIT

----- SITE BREAKDOWN DELAYS -----	
BREAKDOWN DURATION (MINS)	0
RANGE OF QUEUE DELAY - MIN (VEH-H) MAX	0.0
AV BREAKDOWNS PER DAY	0.00
AV QUEUE DELAY/DAY (VEH-H)	0.0
AV TOTAL DELAY/DAY (VEH-H)	0.0

----- SITE ACCIDENT DELAYS -----	
BREAKDOWN DURATION (MINS)	0
RANGE OF QUEUE DELAY - MIN (VEH-H) MAX	0
AV BREAKDOWNS PER DAY	0
AV QUEUE DELAY/DAY (VEH-H)	0
AV TOTAL DELAY/DAY (VEH-H)	0

AVERAGE ACCIDENT NUMBERS (PIA/DAY)	
MAIN ROUTE WITHOUT WORKS	0.0202
MAIN ROUTE WITH WORKS	0.0174
'DIVERSION'	0.0028
<small>PIA: Personal Injury Accidents</small>	
IMPACTS ON ROAD USERS	
ROAD USER COSTS PER DAY	\$38,196
CONGESTED HOURS PER DAY*	4

*Delays Exceeding User-Specified Maximum

**IH 43: STH 54/57 TO STH 172 (BROWN COUNTY)
CONTINUOUS (24 HOUR) CLOSURE
NO DIVERSION ROUTE (MAX QUEUE METHOD)**

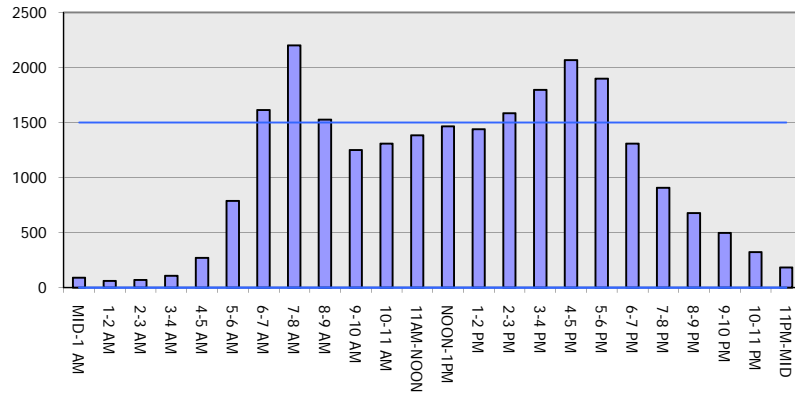
OCTOBER

Analyzed for 2009
Construction Season

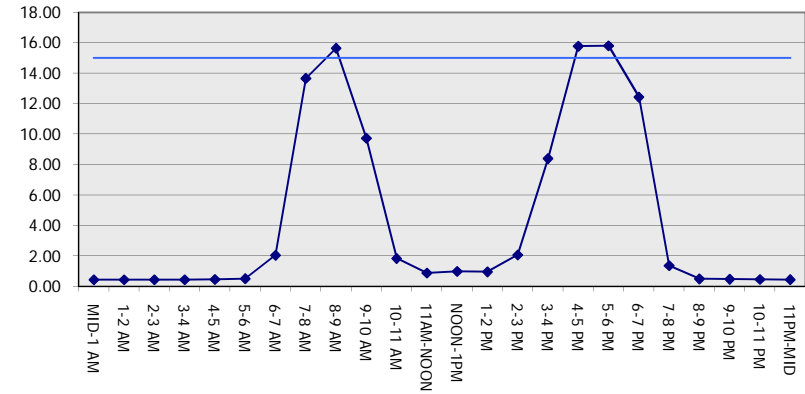
GRAPHICAL REPRESENTATION OF TRAFFIC MODEL INPUT AND OUTPUT

MON-THUR SOUTHBOUND DIRECTION

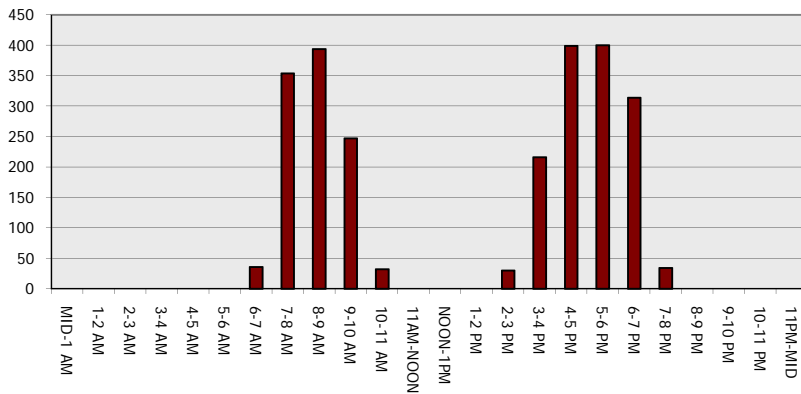
Main Route - Traffic Demand (Vehicles Per Hour)



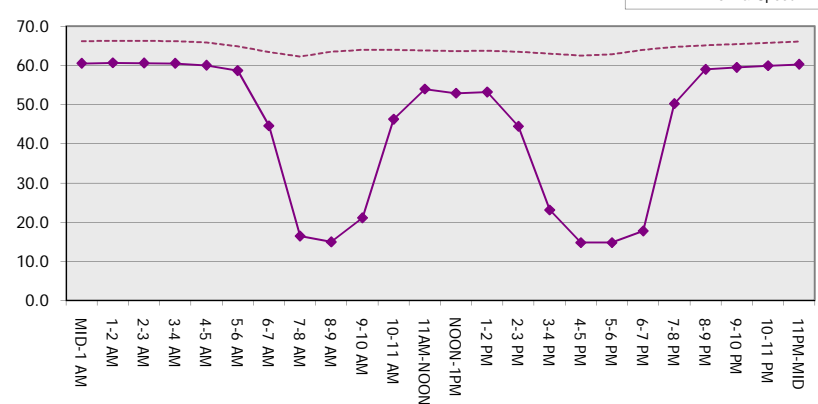
Main Route Average Delay Per Vehicle (Minutes)



Main Route - Average Queue Length (Vehicles)



Main Route - Average Speed (MPH)



IH 43: STH 54/57 TO STH 172 (BROWN COUNTY) CONTINUOUS (24 HOUR) CLOSURE NO DIVERSION ROUTE (MAX QUEUE METHOD)	OCTOBER
	Analyzed for 2009 Construction Season

SUMMARY OF TRAFFIC MODEL OUTPUT

MON-THUR NORTHBOUND DIRECTION

TIME OF DAY	FLOWS AND CAPACITY IN VEH/HR							AVERAGE SPEEDS IN MPH		
	MAIN ROUTE		SITE CAPA CITY	FLOW		AV.DEL PER VEH (MINS)	AVERAGE QUEUE (VEH)	MAIN ROUTE		SITE
	DEMAND FLOW	PCT HEAVY		MAIN ROUTE	'DIVER TED'			WITHOUT WORK ZONE	WITH WORK ZONE	
MID-1 AM	143	0.0	1500	143	0	0.44	0	66.1	60.4	44.9
1-2 AM	89	0.0	1500	89	0	0.43	0	66.2	60.5	45.1
2-3 AM	70	0.0	1500	70	0	0.43	0	66.3	60.6	45.2
3-4 AM	67	0.0	1500	67	0	0.43	0	66.3	60.6	45.2
4-5 AM	138	0.0	1500	138	0	0.44	0	66.1	60.4	45.0
5-6 AM	373	0.0	1500	373	0	0.46	0	65.7	59.8	44.0
6-7 AM	880	0.0	1500	880	0	0.51	0	64.8	58.4	42.1
7-8 AM	1477	0.0	1499	1477	0	1.10	3	63.7	51.8	31.5
8-9 AM	1282	0.0	1500	1282	0	0.76	0	64.0	55.2	36.0
9-10 AM	1084	0.0	1500	1084	0	0.53	0	64.3	57.9	41.4
10-11 AM	1087	0.0	1500	1087	0	0.53	0	64.3	57.9	41.4
11AM-NOON	1110	0.0	1500	1110	0	0.53	0	64.3	57.9	41.3
NOON-1PM	1215	0.0	1500	1215	0	0.66	0	64.1	56.4	38.0
1-2 PM	1279	0.0	1499	1279	0	0.74	0	64.0	55.5	36.1
2-3 PM	1427	0.0	1499	1427	0	0.94	0	63.7	53.3	32.5
3-4 PM	1876	0.0	1500	1876	0	5.86	161	62.9	28.5	30.8
4-5 PM	2322	0.0	1499	1500	822	15.73+	399	62.0	14.8	30.8
5-6 PM	2242	0.0	1500	1500	742	15.75+	400	62.2	14.8	30.8
6-7 PM	1452	0.0	1500	1411	41	14.61+	368	63.7	15.8	30.8
7-8 PM	935	0.0	1499	935	0	2.53	86	64.6	42.2	39.6
8-9 PM	774	0.0	1500	774	0	0.50	0	65.0	58.7	42.5
9-10 PM	670	0.0	1500	670	0	0.49	0	65.1	59.0	42.8
10-11 PM	448	0.0	1500	448	0	0.47	0	65.6	59.6	43.7
11PM-MID	293	0.0	1500	293	0	0.45	0	65.8	60.0	44.3

+ INDICATES QUEUEING EXCEEDS USER-SPECIFIED MAXIMUM LIMIT

----- SITE BREAKDOWN DELAYS -----	
BREAKDOWN DURATION (MINS)	0
RANGE OF QUEUE DELAY - MIN (VEH-H) MAX	0.0
AV BREAKDOWNS PER DAY	0.00
AV QUEUE DELAY/DAY (VEH-H)	0.0
AV TOTAL DELAY/DAY (VEH-H)	0.0

----- SITE ACCIDENT DELAYS -----	
BREAKDOWN DURATION (MINS)	0
RANGE OF QUEUE DELAY - MIN (VEH-H) MAX	0
AV BREAKDOWNS PER DAY	0
AV QUEUE DELAY/DAY (VEH-H)	0
AV TOTAL DELAY/DAY (VEH-H)	0

AVERAGE ACCIDENT NUMBERS (PIA/DAY)	
MAIN ROUTE WITHOUT WORKS	0.0185
MAIN ROUTE WITH WORKS	0.0158
'DIVERSION'	0.0030

PIA: Personal Injury Accidents

ECONOMIC IMPACT ON ROAD USERS	
ROAD USER COSTS PER DAY	\$25,160
CONGESTED HOURS PER DAY*	3

*Delays Exceeding User-Specified Maximum

**IH 43: STH 54/57 TO STH 172 (BROWN COUNTY)
CONTINUOUS (24 HOUR) CLOSURE
NO DIVERSION ROUTE (MAX QUEUE METHOD)**

OCTOBER

Analyzed for 2009
Construction Season

GRAPHICAL REPRESENTATION OF TRAFFIC MODEL INPUT AND OUTPUT
MON-THUR NORTHBOUND DIRECTION

