

**IH 43: STH 54/57 TO STH 172 (BROWN COUNTY)
CONTINUOUS (24 HOUR) CLOSURE
NO DIVERSION ROUTE (MAX QUEUE METHOD)**

OCTOBER

Analyzed for 2009
Construction Season

SUMMARY OF TRAFFIC MODEL OUTPUT

FRIDAY SOUTHBOUND DIRECTION

TIME OF DAY	FLOWS AND CAPACITY IN VEH/HR						AVERAGE SPEEDS IN MPH			
	MAIN ROUTE		SITE CAPA CITY	FLOW		AV.DEL PER VEH (MINS)	AVERAGE QUEUE (VEH)	MAIN ROUTE		SITE
	DEMAND FLOW	PCT HEAVY		MAIN ROUTE	'DIVER TED'			WITHOUT WORK ZONE	WITH WORK ZONE	
MID-1 AM	109	0.0	1500	109	0	0.43	0	66.2	60.5	45.0
1-2 AM	75	0.0	1500	75	0	0.43	0	66.3	60.6	45.2
2-3 AM	85	0.0	1500	85	0	0.43	0	66.2	60.6	45.1
3-4 AM	114	0.0	1500	114	0	0.43	0	66.2	60.5	45.0
4-5 AM	252	0.0	1500	252	0	0.45	0	65.9	60.1	44.5
5-6 AM	748	0.0	1500	748	0	0.49	0	65.0	58.8	42.6
6-7 AM	1553	0.0	1499	1553	0	1.78	27	63.5	46.4	32.0
7-8 AM	2076	0.0	1500	1795	281	12.52+	328	62.5	17.6	30.8
8-9 AM	1447	0.0	1500	1428	19	15.24+	384	63.7	15.3	30.8
9-10 AM	1348	0.0	1499	1348	0	10.34	255	63.9	20.2	30.8
10-11 AM	1471	0.0	1500	1471	0	6.83	156	63.7	26.3	30.8
11AM-NOON	1623	0.0	1500	1623	0	8.53	205	63.3	22.9	30.8
NOON-1PM	1678	0.0	1500	1625	53	13.93+	351	63.3	16.3	30.8
1-2 PM	1753	0.0	1500	1500	253	15.82+	400	63.1	14.8	30.8
2-3 PM	1881	0.0	1500	1500	381	15.80+	400	62.9	14.8	30.8
3-4 PM	1885	0.0	1500	1500	385	15.80+	400	62.8	14.8	30.8
4-5 PM	2122	0.0	1500	1500	622	15.76+	400	62.4	14.8	30.8
5-6 PM	1943	0.0	1500	1500	443	15.79+	400	62.8	14.8	30.8
6-7 PM	1495	0.0	1500	1436	59	15.21+	383	63.6	15.3	30.8
7-8 PM	961	0.0	1499	961	0	3.33	120	64.6	37.9	38.4
8-9 PM	816	0.0	1500	816	0	0.50	0	64.9	58.6	42.4
9-10 PM	640	0.0	1500	640	0	0.48	0	65.2	59.1	43.0
10-11 PM	443	0.0	1500	443	0	0.47	0	65.6	59.6	43.7
11PM-MID	289	0.0	1500	289	0	0.45	0	65.8	60.1	44.3

+ INDICATES QUEUEING EXCEEDS USER-SPECIFIED MAXIMUM LIMIT

----- SITE BREAKDOWN DELAYS -----	
BREAKDOWN DURATION (MINS)	0
RANGE OF QUEUE DELAY - MIN (VEH-H) MAX	0.0
AV BREAKDOWNS PER DAY	0.00
AV QUEUE DELAY/DAY (VEH-H)	0.0
AV TOTAL DELAY/DAY (VEH-H)	0.0

----- SITE ACCIDENT DELAYS -----	
BREAKDOWN DURATION (MINS)	0
RANGE OF QUEUE DELAY - MIN (VEH-H) MAX	0
AV BREAKDOWNS PER DAY	0
AV QUEUE DELAY/DAY (VEH-H)	0
AV TOTAL DELAY/DAY (VEH-H)	0

AVERAGE ACCIDENT NUMBERS (PIA/DAY)	
MAIN ROUTE WITHOUT WORKS	0.0218
MAIN ROUTE WITH WORKS	0.0181
'DIVERSION'	0.0047
PIA: Personal Injury Accidents	
IMPACTS ON ROAD USERS	
ROAD USER COSTS PER DAY	\$65,861
CONGESTED HOURS PER DAY*	9

*Delays Exceeding User-Specified Maximum

**IH 43: STH 54/57 TO STH 172 (BROWN COUNTY)
CONTINUOUS (24 HOUR) CLOSURE
NO DIVERSION ROUTE (MAX QUEUE METHOD)**

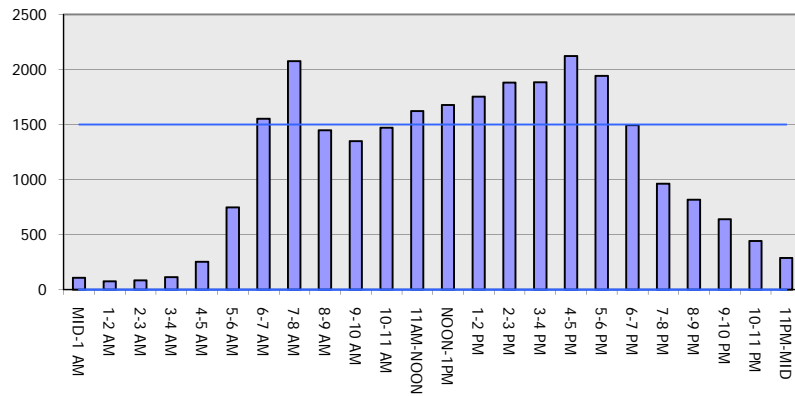
OCTOBER

Analyzed for 2009
Construction Season

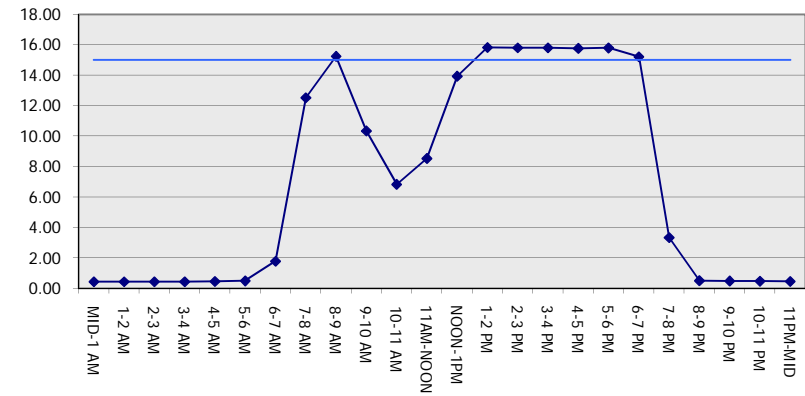
GRAPHICAL REPRESENTATION OF TRAFFIC MODEL INPUT AND OUTPUT

FRIDAY SOUTHBOUND DIRECTION

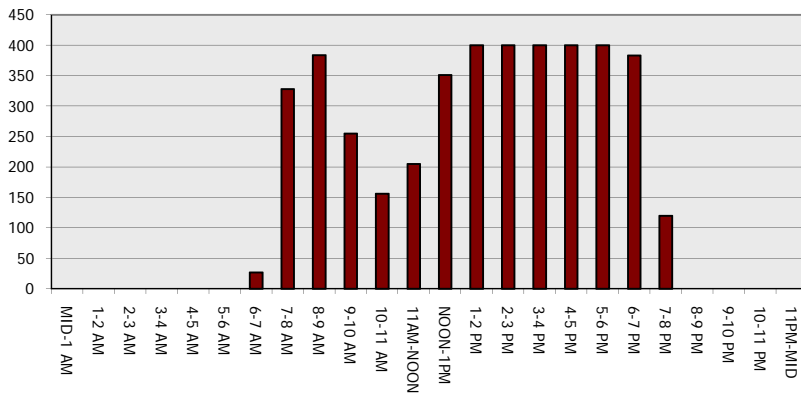
Main Route - Traffic Demand (Vehicles Per Hour)



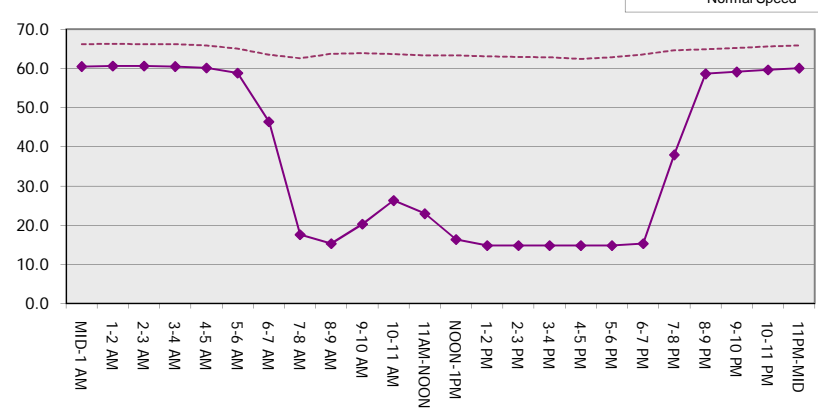
Main Route Average Delay Per Vehicle (Minutes)



Main Route - Average Queue Length (Vehicles)



Main Route - Average Speed (MPH)



IH 43: STH 54/57 TO STH 172 (BROWN COUNTY) CONTINUOUS (24 HOUR) CLOSURE NO DIVERSION ROUTE (MAX QUEUE METHOD)	OCTOBER
	Analyzed for 2009 Construction Season

SUMMARY OF TRAFFIC MODEL OUTPUT

FRIDAY NORTHBOUND DIRECTION

TIME OF DAY	FLOWS AND CAPACITY IN VEH/HR							AVERAGE SPEEDS IN MPH			
	MAIN ROUTE		SITE CAPA CITY	FLOW		AV.DEL PER VEH (MINS)	AVERAGE QUEUE (VEH)	MAIN ROUTE		SITE	
	DEMAND FLOW	PCT HEAVY		MAIN ROUTE	'DIVER TED'			WITHOUT WORK ZONE	WITH WORK ZONE		
MID-1 AM	183	0.0	1500	183	0	0.44	0	66.1	60.3	44.8	
1-2 AM	119	0.0	1500	119	0	0.43	0	66.1	60.5	45.0	
2-3 AM	103	0.0	1500	103	0	0.43	0	66.2	60.5	45.1	
3-4 AM	81	0.0	1500	81	0	0.43	0	66.3	60.6	45.1	
4-5 AM	153	0.0	1500	153	0	0.44	0	66.1	60.4	44.9	
5-6 AM	393	0.0	1500	393	0	0.46	0	65.6	59.7	43.9	
6-7 AM	926	0.0	1500	926	0	0.51	0	64.6	58.4	41.9	
7-8 AM	1412	0.0	1500	1412	0	0.91	0	63.8	53.6	32.7	
8-9 AM	1301	0.0	1500	1301	0	0.77	0	64.0	55.1	35.5	
9-10 AM	1214	0.0	1500	1214	0	0.65	0	64.1	56.4	38.0	
10-11 AM	1330	0.0	1499	1330	0	0.80	0	63.9	54.7	34.7	
11AM-NOON	1469	0.0	1499	1469	0	1.03	1	63.7	52.4	31.6	
NOON-1PM	1680	0.0	1500	1680	0	3.92	87	63.3	35.0	30.8	
1-2 PM	1772	0.0	1500	1749	22	12.02+	308	63.1	18.1	30.8	
2-3 PM	2036	0.0	1500	1500	536	15.78+	400	62.6	14.8	30.8	
3-4 PM	2417	0.0	1500	1500	917	15.71+	400	61.7	14.8	30.8	
4-5 PM	2818	0.0	1500	1500	1318	15.36+	400	57.6	14.8	30.8	
5-6 PM	2607	0.0	1500	1500	1107	15.55+	400	59.8	14.8	30.8	
6-7 PM	1970	0.0	1500	1495	475	15.77+	399	62.7	14.8	30.8	
7-8 PM	1424	0.0	1499	1355	69	14.25+	358	63.7	16.1	30.8	
8-9 PM	1182	0.0	1499	1182	0	4.99	142	64.2	31.4	34.3	
9-10 PM	980	0.0	1500	980	0	0.52	0	64.6	58.2	41.7	
10-11 PM	769	0.0	1500	769	0	0.50	0	65.0	58.7	42.5	
11PM-MID	536	0.0	1500	536	0	0.47	0	65.4	59.4	43.3	

+ INDICATES QUEUEING EXCEEDS USER-SPECIFIED MAXIMUM LIMIT

----- SITE BREAKDOWN DELAYS -----	
BREAKDOWN DURATION (MINS)	0
RANGE OF QUEUE DELAY - MIN (VEH-H) MAX	0.0
AV BREAKDOWNS PER DAY	0.00
AV QUEUE DELAY/DAY (VEH-H)	0.0
AV TOTAL DELAY/DAY (VEH-H)	0.0

----- SITE ACCIDENT DELAYS -----	
BREAKDOWN DURATION (MINS)	0
RANGE OF QUEUE DELAY - MIN (VEH-H) MAX	0
AV BREAKDOWNS PER DAY	0
AV QUEUE DELAY/DAY (VEH-H)	0
AV TOTAL DELAY/DAY (VEH-H)	0

AVERAGE ACCIDENT NUMBERS (PIA/DAY)	
MAIN ROUTE WITHOUT WORKS	0.0234
MAIN ROUTE WITH WORKS	0.0182
'DIVERSION'	0.0084

PIA: Personal Injury Accidents

ECONOMIC IMPACT ON ROAD USERS	
ROAD USER COSTS PER DAY	\$55,855
CONGESTED HOURS PER DAY*	7

*Delays Exceeding User-Specified Maximum

**IH 43: STH 54/57 TO STH 172 (BROWN COUNTY)
CONTINUOUS (24 HOUR) CLOSURE
NO DIVERSION ROUTE (MAX QUEUE METHOD)**

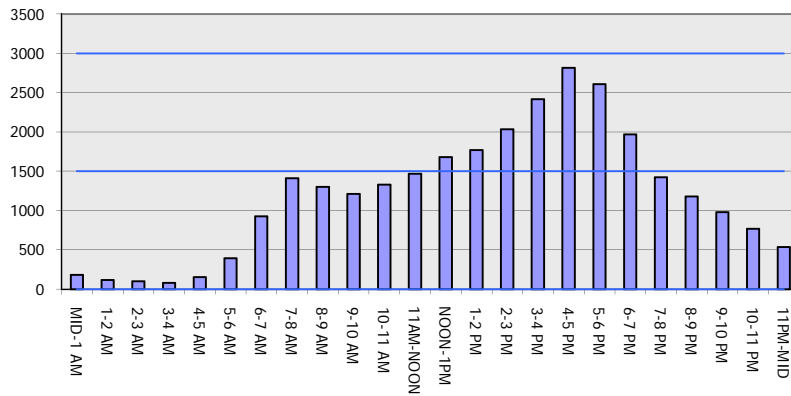
OCTOBER

Analyzed for 2009
Construction Season

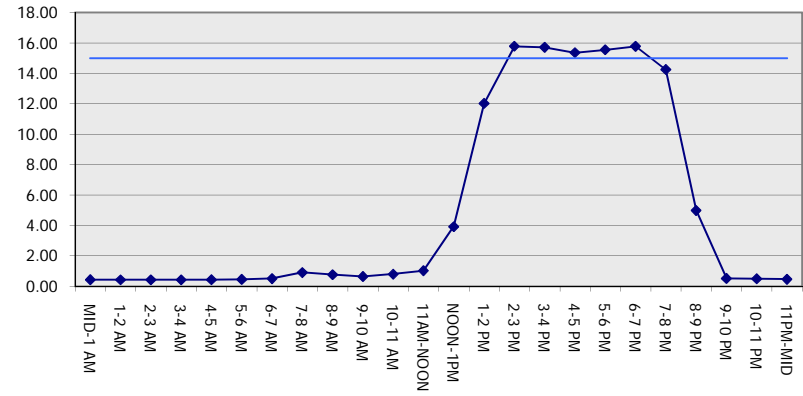
GRAPHICAL REPRESENTATION OF TRAFFIC MODEL INPUT AND OUTPUT

FRIDAY NORTHBOUND DIRECTION

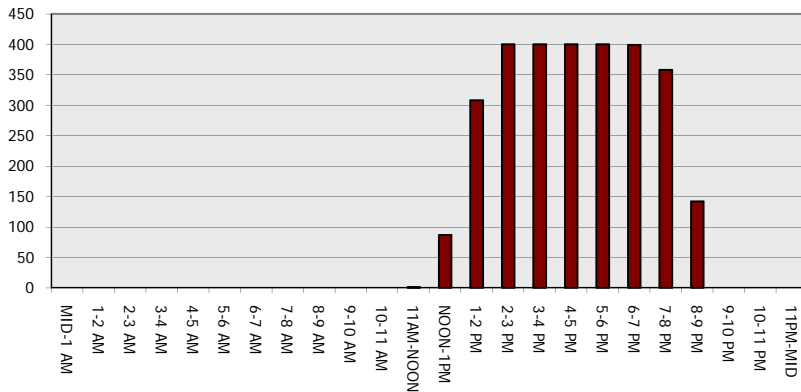
Main Route - Traffic Demand (Vehicles Per Hour)



Main Route Average Delay Per Vehicle (Minutes)



Main Route - Average Queue Length (Vehicles)



Main Route - Average Speed (MPH)

