

<b>IH 43: STH 54/57 TO STH 172 (BROWN COUNTY)                  CONTINUOUS (24 HOUR) CLOSURE                  NO DIVERSION ROUTE (MAX QUEUE METHOD)</b>	<b>AUGUST</b>
	Analyzed for 2009 Construction Season

**SUMMARY OF TRAFFIC MODEL OUTPUT**

SATURDAY SOUTHBOUND DIRECTION

TIME OF DAY	FLOWS AND CAPACITY IN VEH/HR						AVERAGE SPEEDS IN MPH				
	MAIN ROUTE		SITE CAPA CITY	FLOW		AV.DEL PER VEH (MINS)	AVERAGE QUEUE (VEH)	MAIN ROUTE		SITE	
	DEMAND FLOW	PCT HEAVY		MAIN ROUTE	'DIVER TED'			WITHOUT WORK ZONE	WITH WORK ZONE		
MID-1 AM	205	0.0	1500	205	0	0.44	0	66.0	60.2	44.6	
1-2 AM	116	0.0	1500	116	0	0.43	0	66.2	60.5	45.0	
2-3 AM	117	0.0	1500	117	0	0.43	0	66.1	60.5	45.0	
3-4 AM	105	0.0	1500	105	0	0.43	0	66.2	60.5	45.1	
4-5 AM	152	0.0	1500	152	0	0.44	0	66.1	60.4	44.9	
5-6 AM	268	0.0	1500	268	0	0.45	0	65.9	60.1	44.4	
6-7 AM	445	0.0	1500	445	0	0.47	0	65.6	59.6	43.7	
7-8 AM	747	0.0	1500	747	0	0.49	0	65.0	58.8	42.6	
8-9 AM	978	0.0	1500	978	0	0.52	0	64.6	58.2	41.7	
9-10 AM	1222	0.0	1499	1222	0	0.66	0	64.1	56.3	37.9	
10-11 AM	1497	0.0	1499	1497	0	1.20	6	63.6	50.9	31.4	
11AM-NOON	1639	0.0	1500	1639	0	4.15	89	63.3	34.1	30.8	
NOON-1PM	1626	0.0	1499	1626	0	9.42	229	63.3	21.5	30.8	
1-2 PM	1518	0.0	1499	1518	0	12.23	302	63.5	17.9	30.8	
2-3 PM	1489	0.0	1500	1489	0	12.34	305	63.6	17.8	30.8	
3-4 PM	1401	0.0	1499	1401	0	10.20	249	63.8	20.4	30.8	
4-5 PM	1411	0.0	1500	1411	0	6.75	156	63.8	26.5	30.8	
5-6 PM	1301	0.0	1499	1301	0	1.90	35	64.0	45.8	34.3	
6-7 PM	1099	0.0	1500	1099	0	0.53	0	64.3	57.9	41.4	
7-8 PM	898	0.0	1500	898	0	0.51	0	64.7	58.4	42.0	
8-9 PM	769	0.0	1500	769	0	0.50	0	65.0	58.7	42.5	
9-10 PM	660	0.0	1500	660	0	0.49	0	65.1	59.1	42.9	
10-11 PM	654	0.0	1500	654	0	0.49	0	65.1	59.1	42.9	
11PM-MID	368	0.0	1500	368	0	0.46	0	65.7	59.8	44.0	

*----- SITE BREAKDOWN DELAYS -----*	
BREAKDOWN DURATION (MINS)	0
RANGE OF QUEUE DELAY - MIN (VEH-H) MAX	0.0
AV BREAKDOWNS PER DAY	0.00
AV QUEUE DELAY/DAY (VEH-H)	0.0
AV TOTAL DELAY/DAY (VEH-H)	0.0

*----- SITE ACCIDENT DELAYS -----*	
BREAKDOWN DURATION (MINS)	0
RANGE OF QUEUE DELAY - MIN (VEH-H) MAX	0
AV BREAKDOWNS PER DAY	0
AV QUEUE DELAY/DAY (VEH-H)	0
AV TOTAL DELAY/DAY (VEH-H)	0

AVERAGE ACCIDENT NUMBERS (PIA/DAY)	
MAIN ROUTE WITHOUT WORKS	0.0168
MAIN ROUTE WITH WORKS	0.0154
'DIVERSION'	0.0000
PIA: Personal Injury Accidents	
IMPACTS ON ROAD USERS	
ROAD USER COSTS PER DAY	\$25,387
CONGESTED HOURS PER DAY*	0

\*Delays Exceeding User-Specified Maximum

**IH 43: STH 54/57 TO STH 172 (BROWN COUNTY)  
CONTINUOUS (24 HOUR) CLOSURE  
NO DIVERSION ROUTE (MAX QUEUE METHOD)**

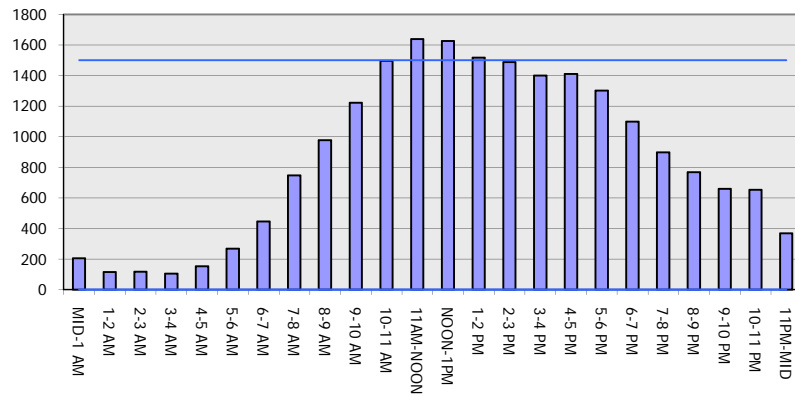
**AUGUST**

Analyzed for 2009  
Construction Season

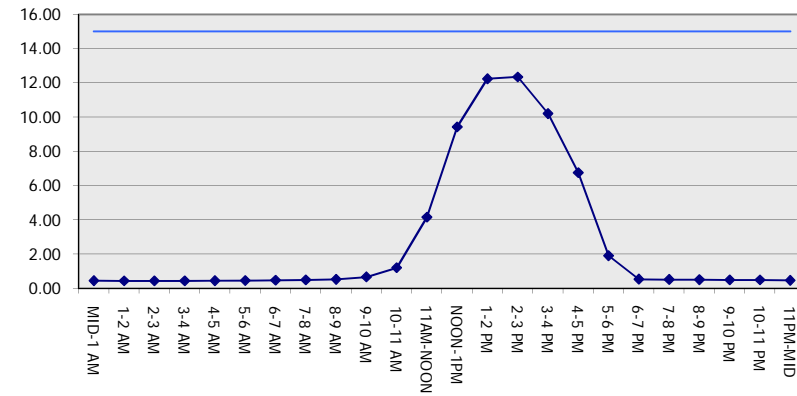
**GRAPHICAL REPRESENTATION OF TRAFFIC MODEL INPUT AND OUTPUT**

**SATURDAY SOUTHBOUND DIRECTION**

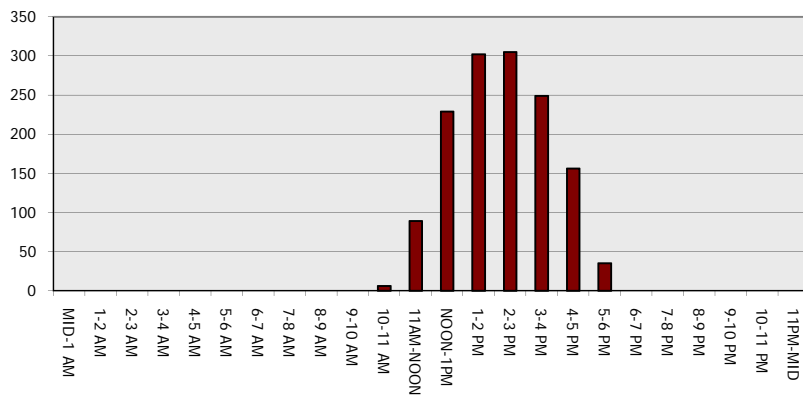
**Main Route - Traffic Demand (Vehicles Per Hour)**



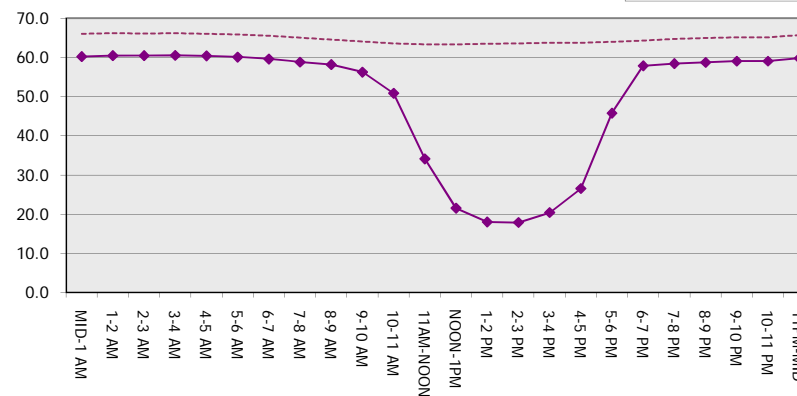
**Main Route Average Delay Per Vehicle (Minutes)**



**Main Route - Average Queue Length (Vehicles)**



**Main Route - Average Speed (MPH)**



<b>IH 43: STH 54/57 TO STH 172 (BROWN COUNTY)                  CONTINUOUS (24 HOUR) CLOSURE                  NO DIVERSION ROUTE (MAX QUEUE METHOD)</b>	<b>AUGUST</b>
	Analyzed for 2009 Construction Season

**SUMMARY OF TRAFFIC MODEL OUTPUT**

SATURDAY NORTHBOUND DIRECTION

TIME OF DAY	FLOWS AND CAPACITY IN VEH/HR						AVERAGE SPEEDS IN MPH			
	MAIN ROUTE		SITE CAPA CITY	FLOW		AV.DEL PER VEH (MINS)	AVERAGE QUEUE (VEH)	MAIN ROUTE		SITE
	DEMAND FLOW	PCT HEAVY		MAIN ROUTE	'DIVER TED'			WITHOUT WORK ZONE	WITH WORK ZONE	
MID-1 AM	318	0.0	1500	318	0	0.45	0	65.8	59.9	44.2
1-2 AM	174	0.0	1500	174	0	0.44	0	66.1	60.4	44.8
2-3 AM	140	0.0	1500	140	0	0.44	0	66.1	60.4	44.9
3-4 AM	104	0.0	1500	104	0	0.43	0	66.2	60.5	45.1
4-5 AM	97	0.0	1500	97	0	0.43	0	66.2	60.5	45.1
5-6 AM	189	0.0	1500	189	0	0.44	0	66.0	60.3	44.7
6-7 AM	360	0.0	1500	360	0	0.46	0	65.7	59.9	44.0
7-8 AM	529	0.0	1500	529	0	0.47	0	65.4	59.4	43.4
8-9 AM	776	0.0	1500	776	0	0.50	0	65.0	58.7	42.5
9-10 AM	1044	0.0	1500	1044	0	0.52	0	64.5	58.1	41.5
10-11 AM	1376	0.0	1499	1376	0	0.86	0	63.8	54.1	33.6
11AM-NOON	1524	0.0	1499	1524	0	1.28	7	63.5	50.2	30.8
NOON-1PM	1541	0.0	1500	1541	0	2.76	47	63.5	40.4	30.8
1-2 PM	1453	0.0	1499	1453	0	2.63	44	63.7	41.1	30.9
2-3 PM	1484	0.0	1500	1484	0	1.34	8	63.6	49.8	30.9
3-4 PM	1528	0.0	1500	1528	0	1.83	22	63.5	46.1	30.8
4-5 PM	1309	0.0	1500	1309	0	0.88	2	64.0	54.0	35.1
5-6 PM	1293	0.0	1500	1293	0	0.76	0	64.0	55.2	35.7
6-7 PM	1030	0.0	1500	1030	0	0.52	0	64.5	58.1	41.5
7-8 PM	762	0.0	1500	762	0	0.50	0	65.0	58.7	42.5
8-9 PM	682	0.0	1500	682	0	0.49	0	65.1	59.0	42.8
9-10 PM	679	0.0	1500	679	0	0.49	0	65.1	59.0	42.8
10-11 PM	595	0.0	1500	595	0	0.48	0	65.3	59.2	43.2
11PM-MID	468	0.0	1500	468	0	0.47	0	65.5	59.6	43.7

*----- SITE BREAKDOWN DELAYS -----*	
BREAKDOWN DURATION (MINS)	0
RANGE OF QUEUE DELAY - MIN (VEH-H) MAX	0.0
AV BREAKDOWNS PER DAY	0.00
AV QUEUE DELAY/DAY (VEH-H)	0.0
AV TOTAL DELAY/DAY (VEH-H)	0.0

*----- SITE ACCIDENT DELAYS -----*	
BREAKDOWN DURATION (MINS)	0
RANGE OF QUEUE DELAY - MIN (VEH-H) MAX	0
AV BREAKDOWNS PER DAY	0
AV QUEUE DELAY/DAY (VEH-H)	0
AV TOTAL DELAY/DAY (VEH-H)	0

AVERAGE ACCIDENT NUMBERS (PIA/DAY)	
MAIN ROUTE WITHOUT WORKS	0.0158
MAIN ROUTE WITH WORKS	0.0145
'DIVERSION'	0.0000

PIA: Personal Injury Accidents

ECONOMIC IMPACT ON ROAD USERS	
ROAD USER COSTS PER DAY	\$6,095
CONGESTED HOURS PER DAY*	0

\*Delays Exceeding User-Specified Maximum

**IH 43: STH 54/57 TO STH 172 (BROWN COUNTY)  
CONTINUOUS (24 HOUR) CLOSURE  
NO DIVERSION ROUTE (MAX QUEUE METHOD)**

**AUGUST**

Analyzed for 2009  
Construction Season

**GRAPHICAL REPRESENTATION OF TRAFFIC MODEL INPUT AND OUTPUT  
SATURDAY NORTHBOUND DIRECTION**

