

<b>IH 43: USH 41 TO STH 54/57 (BROWN COUNTY)                  CONTINUOUS (24 HOUR) CLOSURE                  NO DIVERSION ROUTE (MAX QUEUE METHOD)</b>	<b>OCTOBER</b>
	Analyzed for 2009 Construction Season

**SUMMARY OF TRAFFIC MODEL OUTPUT**

SUNDAY SOUTHBOUND DIRECTION

TIME OF DAY	FLOWS AND CAPACITY IN VEH/HR						AVERAGE SPEEDS IN MPH			
	MAIN ROUTE		SITE CAPA CITY	FLOW		AV.DEL PER VEH (MINS)	AVERAGE QUEUE (VEH)	MAIN ROUTE		SITE
	DEMAND FLOW	PCT HEAVY		MAIN ROUTE	'DIVER TED'			WITHOUT WORK ZONE	WITH WORK ZONE	
MID-1 AM	194	0.0	1500	194	0	0.44	0	66.0	61.0	44.7
1-2 AM	121	0.0	1500	121	0	0.43	0	66.1	61.2	45.0
2-3 AM	108	0.0	1500	108	0	0.43	0	66.2	61.2	45.1
3-4 AM	83	0.0	1500	83	0	0.43	0	66.2	61.3	45.1
4-5 AM	105	0.0	1500	105	0	0.43	0	66.2	61.2	45.1
5-6 AM	212	0.0	1500	212	0	0.44	0	66.0	61.0	44.6
6-7 AM	208	0.0	1500	208	0	0.44	0	66.0	61.0	44.6
7-8 AM	275	0.0	1500	275	0	0.45	0	65.9	60.8	44.4
8-9 AM	495	0.0	1500	495	0	0.47	0	65.5	60.2	43.5
9-10 AM	750	0.0	1500	750	0	0.50	0	65.0	59.6	42.6
10-11 AM	1089	0.0	1500	1089	0	0.53	0	64.3	58.7	41.4
11AM-NOON	1315	0.0	1500	1315	0	0.79	0	64.0	56.0	35.1
NOON-1PM	1406	0.0	1500	1406	0	0.90	0	63.8	54.8	32.9
1-2 PM	1395	0.0	1500	1395	0	0.89	0	63.8	55.0	33.1
2-3 PM	1423	0.0	1499	1423	0	0.92	0	63.7	54.6	32.5
3-4 PM	1507	0.0	1499	1507	0	1.11	2	63.6	53.0	30.8
4-5 PM	1520	0.0	1500	1520	0	1.88	23	63.5	47.5	30.8
5-6 PM	1390	0.0	1499	1390	0	1.20	8	63.8	52.5	33.0
6-7 PM	1033	0.0	1500	1033	0	0.52	0	64.5	58.9	41.5
7-8 PM	783	0.0	1500	783	0	0.50	0	65.0	59.5	42.5
8-9 PM	503	0.0	1500	503	0	0.47	0	65.5	60.2	43.5
9-10 PM	332	0.0	1500	332	0	0.45	0	65.8	60.7	44.2
10-11 PM	243	0.0	1500	243	0	0.45	0	66.0	60.9	44.5
11PM-MID	273	0.0	1500	273	0	0.45	0	65.9	60.8	44.4

*----- SITE BREAKDOWN DELAYS -----*	
BREAKDOWN DURATION (MINS)	0
RANGE OF QUEUE DELAY - MIN (VEH-H) MAX	0.0
AV BREAKDOWNS PER DAY	0.00
AV QUEUE DELAY/DAY (VEH-H)	0.0
AV TOTAL DELAY/DAY (VEH-H)	0.0

*----- SITE ACCIDENT DELAYS -----*	
BREAKDOWN DURATION (MINS)	0
RANGE OF QUEUE DELAY - MIN (VEH-H) MAX	0
AV BREAKDOWNS PER DAY	0
AV QUEUE DELAY/DAY (VEH-H)	0
AV TOTAL DELAY/DAY (VEH-H)	0

AVERAGE ACCIDENT NUMBERS (PIA/DAY)	
MAIN ROUTE WITHOUT WORKS	0.0157
MAIN ROUTE WITH WORKS	0.0146
'DIVERSION'	0.0000
<small>PIA: Personal Injury Accidents</small>	
IMPACTS ON ROAD USERS	
ROAD USER COSTS PER DAY	\$3,785
CONGESTED HOURS PER DAY*	0

\*Delays Exceeding User-Specified Maximum

**IH 43: USH 41 TO STH 54/57 (BROWN COUNTY)  
CONTINUOUS (24 HOUR) CLOSURE  
NO DIVERSION ROUTE (MAX QUEUE METHOD)**

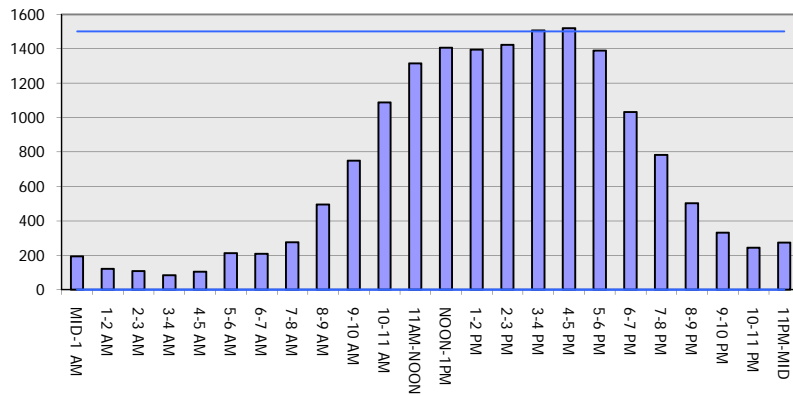
**OCTOBER**

Analyzed for 2009  
Construction Season

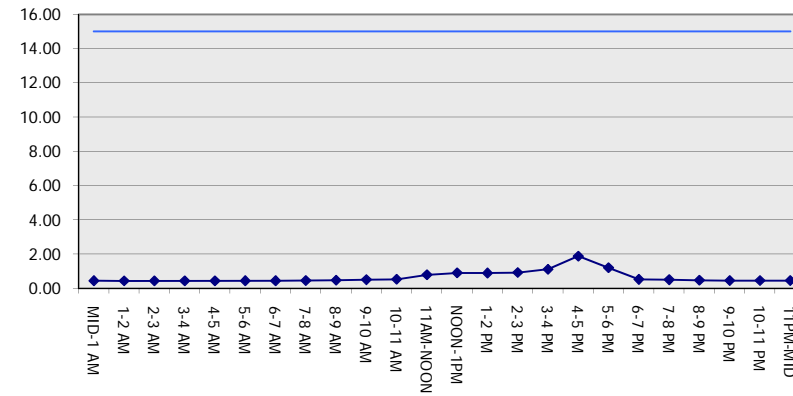
**GRAPHICAL REPRESENTATION OF TRAFFIC MODEL INPUT AND OUTPUT**

**SUNDAY SOUTHBOUND DIRECTION**

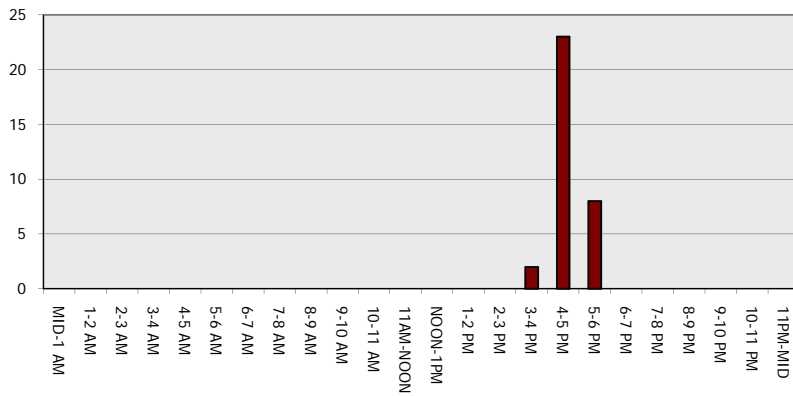
**Main Route - Traffic Demand (Vehicles Per Hour)**



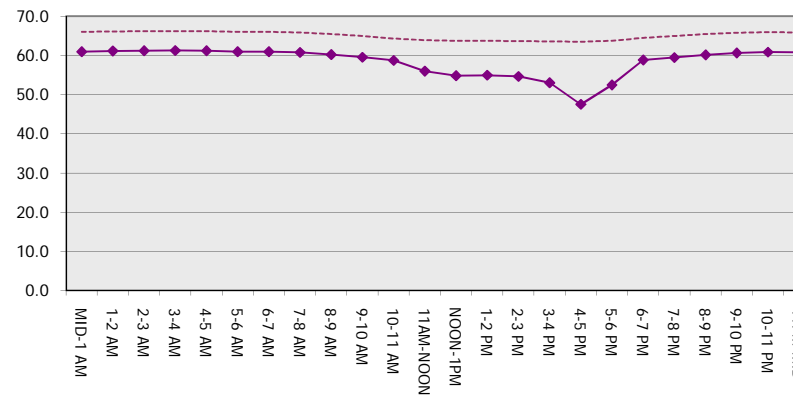
**Main Route Average Delay Per Vehicle (Minutes)**



**Main Route - Average Queue Length (Vehicles)**



**Main Route - Average Speed (MPH)**



<b>IH 43: USH 41 TO STH 54/57 (BROWN COUNTY)                  CONTINUOUS (24 HOUR) CLOSURE                  NO DIVERSION ROUTE (MAX QUEUE METHOD)</b>	<b>OCTOBER</b>
	Analyzed for 2009 Construction Season

**SUMMARY OF TRAFFIC MODEL OUTPUT**

SUNDAY NORTHBOUND DIRECTION

TIME OF DAY	FLOWS AND CAPACITY IN VEH/HR							AVERAGE SPEEDS IN MPH		
	MAIN ROUTE		SITE CAPA CITY	FLOW		AV.DEL PER VEH (MINS)	AVERAGE QUEUE (VEH)	MAIN ROUTE		SITE
	DEMAND FLOW	PCT HEAVY		MAIN ROUTE	'DIVER TED'			WITHOUT WORK ZONE	WITH WORK ZONE	
MID-1 AM	171	0.0	1500	171	0	0.44	0	66.1	61.0	44.8
1-2 AM	125	0.0	1500	125	0	0.43	0	66.1	61.2	45.0
2-3 AM	117	0.0	1500	117	0	0.43	0	66.1	61.2	45.0
3-4 AM	73	0.0	1500	73	0	0.43	0	66.3	61.3	45.2
4-5 AM	80	0.0	1500	80	0	0.43	0	66.3	61.3	45.1
5-6 AM	163	0.0	1500	163	0	0.44	0	66.1	61.1	44.8
6-7 AM	260	0.0	1500	260	0	0.45	0	65.9	60.9	44.5
7-8 AM	313	0.0	1500	313	0	0.45	0	65.8	60.7	44.2
8-9 AM	494	0.0	1500	494	0	0.47	0	65.5	60.2	43.5
9-10 AM	777	0.0	1500	777	0	0.50	0	65.0	59.5	42.5
10-11 AM	1012	0.0	1500	1012	0	0.52	0	64.5	58.9	41.6
11AM-NOON	1147	0.0	1500	1147	0	0.57	0	64.3	58.2	40.2
NOON-1PM	1190	0.0	1500	1190	0	0.62	0	64.1	57.6	38.8
1-2 PM	1063	0.0	1500	1063	0	0.53	0	64.4	58.8	41.5
2-3 PM	1142	0.0	1500	1142	0	0.56	0	64.3	58.3	40.4
3-4 PM	1187	0.0	1500	1187	0	0.62	0	64.1	57.7	38.9
4-5 PM	1110	0.0	1500	1110	0	0.53	0	64.3	58.7	41.3
5-6 PM	1047	0.0	1500	1047	0	0.52	0	64.5	58.8	41.5
6-7 PM	883	0.0	1500	883	0	0.51	0	64.8	59.2	42.1
7-8 PM	580	0.0	1500	580	0	0.48	0	65.3	60.0	43.2
8-9 PM	402	0.0	1500	402	0	0.46	0	65.6	60.5	43.9
9-10 PM	288	0.0	1500	288	0	0.45	0	65.8	60.7	44.3
10-11 PM	190	0.0	1500	190	0	0.44	0	66.0	61.0	44.7
11PM-MID	146	0.0	1500	146	0	0.44	0	66.1	61.1	44.9

*----- SITE BREAKDOWN DELAYS -----*	
BREAKDOWN DURATION (MINS)	0
RANGE OF QUEUE DELAY - MIN	0.0
(VEH-H) MAX	0.0
AV BREAKDOWNS PER DAY	0.00
AV QUEUE DELAY/DAY (VEH-H)	0.0
AV TOTAL DELAY/DAY (VEH-H)	0.0

*----- SITE ACCIDENT DELAYS -----*	
BREAKDOWN DURATION (MINS)	0
RANGE OF QUEUE DELAY - MIN	0
(VEH-H) MAX	0
AV BREAKDOWNS PER DAY	0
AV QUEUE DELAY/DAY (VEH-H)	0
AV TOTAL DELAY/DAY (VEH-H)	0

AVERAGE ACCIDENT NUMBERS (PIA/DAY)	
MAIN ROUTE WITHOUT WORKS	0.0131
MAIN ROUTE WITH WORKS	0.0122
'DIVERSION'	0.0000

PIA: Personal Injury Accidents

ECONOMIC IMPACT ON ROAD USERS	
ROAD USER COSTS PER DAY	\$1,944
CONGESTED HOURS PER DAY*	0

\*Delays Exceeding User-Specified Maximum

**IH 43: USH 41 TO STH 54/57 (BROWN COUNTY)  
 CONTINUOUS (24 HOUR) CLOSURE  
 NO DIVERSION ROUTE (MAX QUEUE METHOD)**

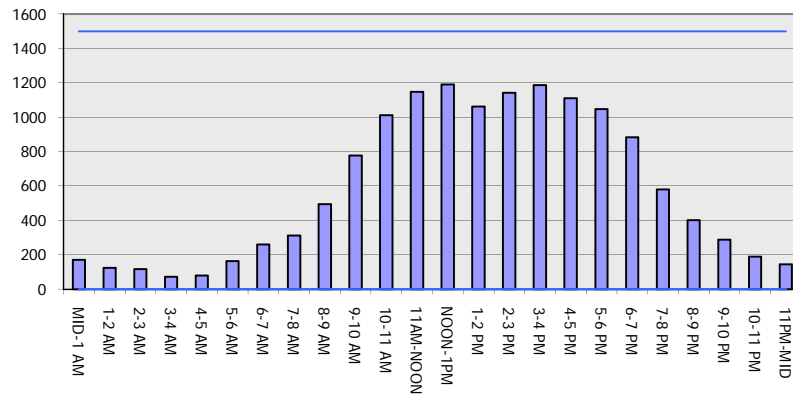
**OCTOBER**

Analyzed for 2009  
 Construction Season

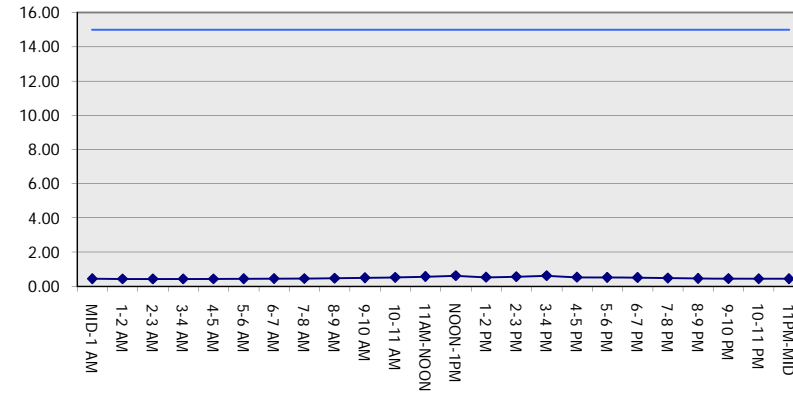
**GRAPHICAL REPRESENTATION OF TRAFFIC MODEL INPUT AND OUTPUT**

**SUNDAY NORTHBOUND DIRECTION**

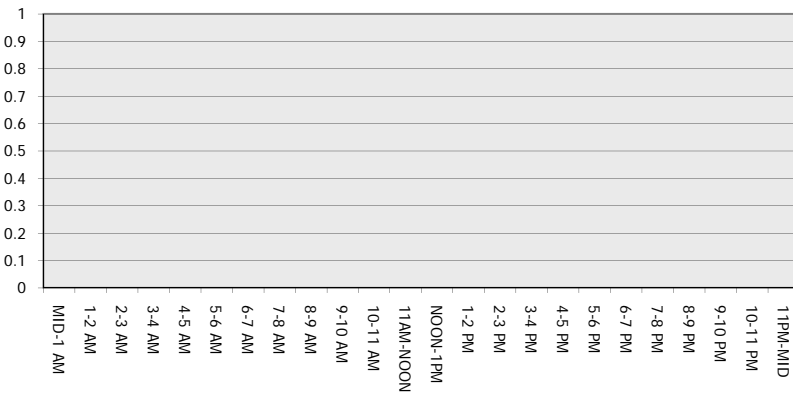
**Main Route - Traffic Demand (Vehicles Per Hour)**



**Main Route Average Delay Per Vehicle (Minutes)**



**Main Route - Average Queue Length (Vehicles)**



**Main Route - Average Speed (MPH)**

