

<b>IH 43: USH 41 TO STH 54/57 (BROWN COUNTY)                  CONTINUOUS (24 HOUR) CLOSURE                  NO DIVERSION ROUTE (MAX QUEUE METHOD)</b>	<b>OCTOBER</b>
	Analyzed for 2009 Construction Season

**SUMMARY OF TRAFFIC MODEL OUTPUT**

FRIDAY      SOUTHBOUND DIRECTION

TIME OF DAY	FLOWS AND CAPACITY IN VEH/HR						AVERAGE SPEEDS IN MPH				
	MAIN ROUTE		SITE CAPA CITY	FLOW		AV.DEL PER VEH (MINS)	AVERAGE QUEUE (VEH)	MAIN ROUTE		SITE	
	DEMAND FLOW	PCT HEAVY		MAIN ROUTE	'DIVER TED'			WITHOUT WORK ZONE	WITH WORK ZONE		
MID-1 AM	119	0.0	1500	119	0	0.43	0	66.1	61.2	45.0	
1-2 AM	83	0.0	1500	83	0	0.43	0	66.2	61.3	45.1	
2-3 AM	93	0.0	1500	93	0	0.43	0	66.2	61.3	45.1	
3-4 AM	89	0.0	1500	89	0	0.43	0	66.2	61.3	45.1	
4-5 AM	266	0.0	1500	266	0	0.45	0	65.9	60.8	44.4	
5-6 AM	730	0.0	1500	730	0	0.49	0	65.0	59.6	42.7	
6-7 AM	1216	0.0	1499	1216	0	0.67	0	64.1	57.2	37.9	
7-8 AM	1699	0.0	1499	1699	0	4.33	98	63.2	35.6	30.8	
8-9 AM	1241	0.0	1499	1241	0	3.63	95	64.1	38.7	34.3	
9-10 AM	1072	0.0	1500	1072	0	0.53	0	64.4	58.7	41.4	
10-11 AM	1079	0.0	1500	1079	0	0.53	0	64.4	58.7	41.4	
11AM-NOON	1143	0.0	1500	1143	0	0.56	0	64.3	58.3	40.4	
NOON-1PM	1232	0.0	1500	1232	0	0.68	0	64.1	57.1	37.4	
1-2 PM	1304	0.0	1500	1304	0	0.77	0	64.0	56.1	35.4	
2-3 PM	1446	0.0	1499	1446	0	0.95	0	63.7	54.3	31.9	
3-4 PM	1630	0.0	1499	1630	0	3.00	58	63.3	41.2	30.8	
4-5 PM	1669	0.0	1500	1669	0	8.85	216	63.3	24.5	30.8	
5-6 PM	1563	0.0	1499	1563	0	13.79	345	63.5	18.3	30.8	
6-7 PM	1188	0.0	1499	1188	0	8.63	230	64.1	25.0	33.2	
7-8 PM	775	0.0	1500	775	0	0.56	1	65.0	58.9	42.5	
8-9 PM	638	0.0	1500	638	0	0.48	0	65.2	59.9	43.0	
9-10 PM	571	0.0	1500	571	0	0.48	0	65.3	60.1	43.2	
10-11 PM	430	0.0	1500	430	0	0.46	0	65.6	60.4	43.8	
11PM-MID	272	0.0	1500	272	0	0.45	0	65.9	60.8	44.4	

*----- SITE BREAKDOWN DELAYS -----*	
BREAKDOWN DURATION (MINS)	0
RANGE OF QUEUE DELAY - MIN (VEH-H) MAX	0.0
AV BREAKDOWNS PER DAY	0.00
AV QUEUE DELAY/DAY (VEH-H)	0.0
AV TOTAL DELAY/DAY (VEH-H)	0.0

*----- SITE ACCIDENT DELAYS -----*	
BREAKDOWN DURATION (MINS)	0
RANGE OF QUEUE DELAY - MIN (VEH-H) MAX	0
AV BREAKDOWNS PER DAY	0
AV QUEUE DELAY/DAY (VEH-H)	0
AV TOTAL DELAY/DAY (VEH-H)	0

AVERAGE ACCIDENT NUMBERS (PIA/DAY)	
MAIN ROUTE WITHOUT WORKS	0.0202
MAIN ROUTE WITH WORKS	0.0188
'DIVERSION'	0.0000
PIA: Personal Injury Accidents	
IMPACTS ON ROAD USERS	
ROAD USER COSTS PER DAY	\$16,063
CONGESTED HOURS PER DAY*	0

\*Delays Exceeding User-Specified Maximum

**IH 43: USH 41 TO STH 54/57 (BROWN COUNTY)  
CONTINUOUS (24 HOUR) CLOSURE  
NO DIVERSION ROUTE (MAX QUEUE METHOD)**

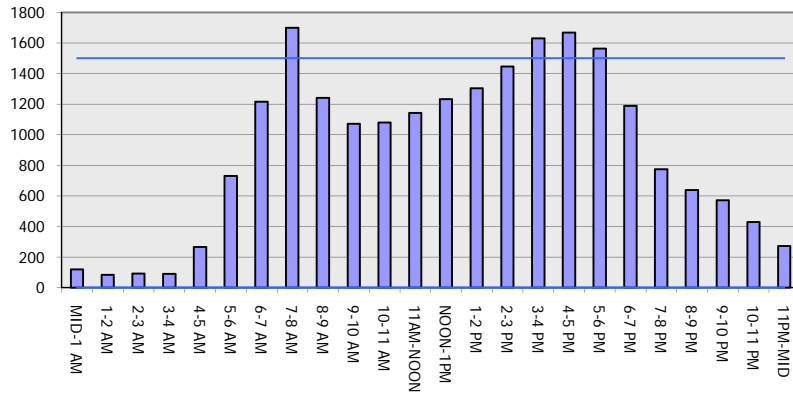
**OCTOBER**

Analyzed for 2009  
Construction Season

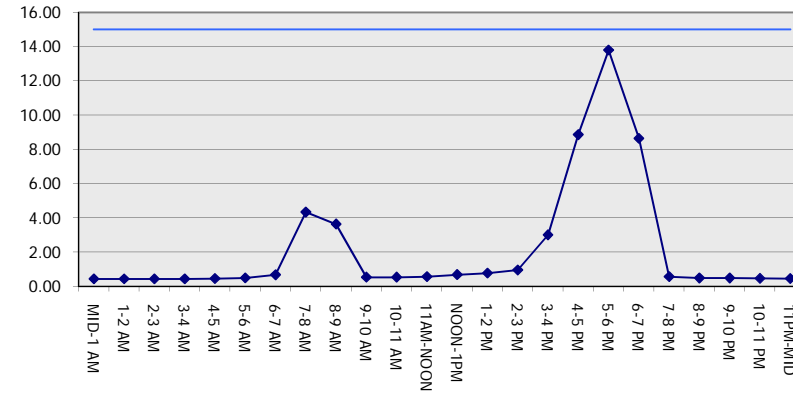
**GRAPHICAL REPRESENTATION OF TRAFFIC MODEL INPUT AND OUTPUT**

**FRIDAY SOUTHBOUND DIRECTION**

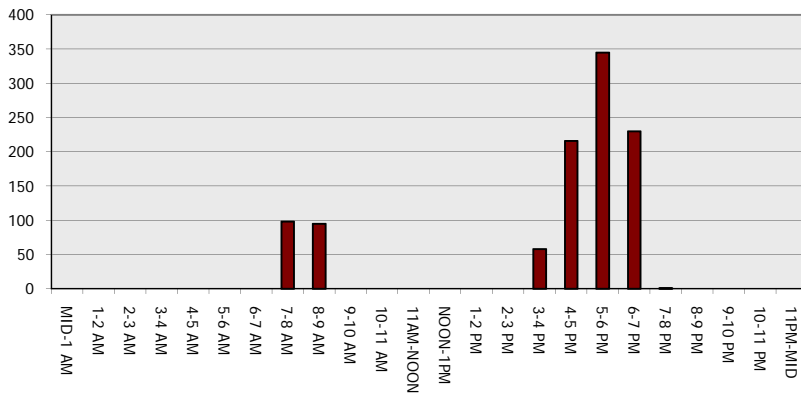
**Main Route - Traffic Demand (Vehicles Per Hour)**



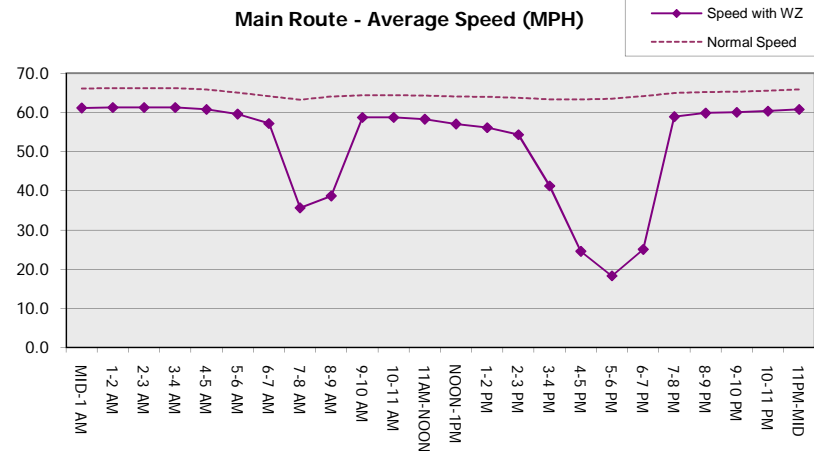
**Main Route Average Delay Per Vehicle (Minutes)**



**Main Route - Average Queue Length (Vehicles)**



**Main Route - Average Speed (MPH)**



<b>IH 43: USH 41 TO STH 54/57 (BROWN COUNTY)                  CONTINUOUS (24 HOUR) CLOSURE                  NO DIVERSION ROUTE (MAX QUEUE METHOD)</b>	<b>OCTOBER</b>
	Analyzed for 2009 Construction Season

**SUMMARY OF TRAFFIC MODEL OUTPUT**

FRIDAY NORTHBOUND DIRECTION

TIME OF DAY	FLOWS AND CAPACITY IN VEH/HR							AVERAGE SPEEDS IN MPH		
	MAIN ROUTE		SITE CAPA CITY	FLOW		AV.DEL PER VEH (MINS)	AVERAGE QUEUE (VEH)	MAIN ROUTE		SITE
	DEMAND FLOW	PCT HEAVY		MAIN ROUTE	'DIVER TED'			WITHOUT WORK ZONE	WITH WORK ZONE	
MID-1 AM	135	0.0	1500	135	0	0.44	0	66.1	61.2	45.0
1-2 AM	101	0.0	1500	101	0	0.43	0	66.2	61.2	45.1
2-3 AM	100	0.0	1500	100	0	0.43	0	66.2	61.2	45.1
3-4 AM	110	0.0	1500	110	0	0.43	0	66.2	61.2	45.0
4-5 AM	211	0.0	1500	211	0	0.44	0	66.0	61.0	44.6
5-6 AM	512	0.0	1500	512	0	0.47	0	65.5	60.2	43.5
6-7 AM	1183	0.0	1499	1183	0	0.65	0	64.2	57.4	38.4
7-8 AM	1497	0.0	1499	1497	0	1.04	0	63.6	53.6	30.9
8-9 AM	1131	0.0	1500	1131	0	0.55	0	64.3	58.4	40.8
9-10 AM	1109	0.0	1500	1109	0	0.53	0	64.3	58.7	41.3
10-11 AM	1226	0.0	1500	1226	0	0.67	0	64.1	57.2	37.6
11AM-NOON	1371	0.0	1499	1371	0	0.86	0	63.8	55.3	33.7
NOON-1PM	1473	0.0	1499	1473	0	0.99	0	63.7	54.0	31.4
1-2 PM	1595	0.0	1500	1595	0	2.23	35	63.4	45.3	30.8
2-3 PM	1873	0.0	1500	1873	0	10.07+	267	62.9	22.5	30.8
3-4 PM	2064	0.0	1500	1458	606	15.61+	396	62.5	16.6	30.8
4-5 PM	2248	0.0	1500	1500	748	15.73+	400	62.2	16.5	30.8
5-6 PM	1977	0.0	1500	1500	477	15.77+	400	62.7	16.5	30.8
6-7 PM	1500	0.0	1499	1409	91	15.13+	381	63.6	17.1	30.8
7-8 PM	960	0.0	1499	960	0	3.52	122	64.6	39.3	38.3
8-9 PM	757	0.0	1500	757	0	0.50	0	65.0	59.6	42.5
9-10 PM	650	0.0	1500	650	0	0.49	0	65.2	59.8	43.0
10-11 PM	530	0.0	1500	530	0	0.47	0	65.4	60.1	43.4
11PM-MID	320	0.0	1500	320	0	0.45	0	65.8	60.7	44.2

+ INDICATES QUEUEING EXCEEDS USER-SPECIFIED MAXIMUM LIMIT

*----- SITE BREAKDOWN DELAYS -----*	
BREAKDOWN DURATION (MINS)	0
RANGE OF QUEUE DELAY - MIN (VEH-H) MAX	0.0
AV BREAKDOWNS PER DAY	0.00
AV QUEUE DELAY/DAY (VEH-H)	0.0
AV TOTAL DELAY/DAY (VEH-H)	0.0

*----- SITE ACCIDENT DELAYS -----*	
BREAKDOWN DURATION (MINS)	0
RANGE OF QUEUE DELAY - MIN (VEH-H) MAX	0
AV BREAKDOWNS PER DAY	0
AV QUEUE DELAY/DAY (VEH-H)	0
AV TOTAL DELAY/DAY (VEH-H)	0

AVERAGE ACCIDENT NUMBERS (PIA/DAY)	
MAIN ROUTE WITHOUT WORKS	0.0231
MAIN ROUTE WITH WORKS	0.0198
'DIVERSION'	0.0042

PIA: Personal Injury Accidents

ECONOMIC IMPACT ON ROAD USERS	
ROAD USER COSTS PER DAY	\$35,204
CONGESTED HOURS PER DAY*	5

\*Delays Exceeding User-Specified Maximum

**IH 43: USH 41 TO STH 54/57 (BROWN COUNTY)  
CONTINUOUS (24 HOUR) CLOSURE  
NO DIVERSION ROUTE (MAX QUEUE METHOD)**

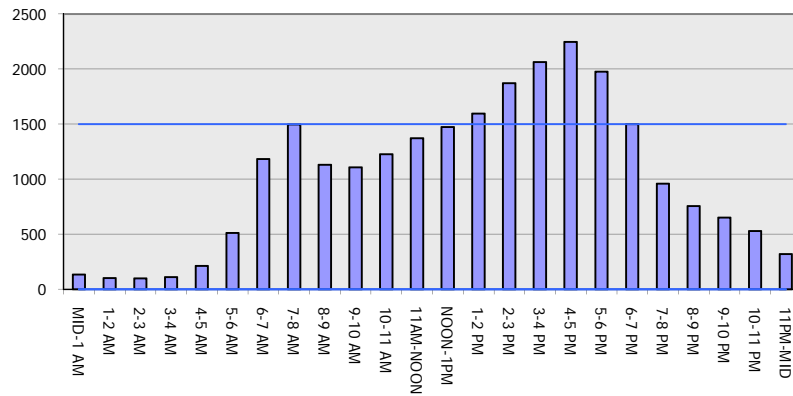
**OCTOBER**

Analyzed for 2009  
Construction Season

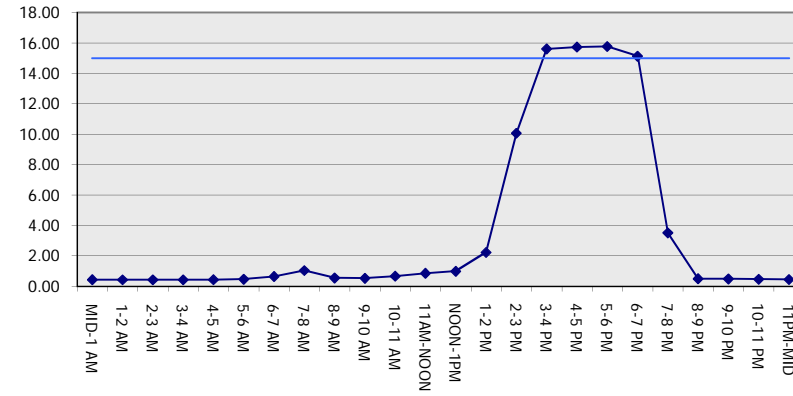
**GRAPHICAL REPRESENTATION OF TRAFFIC MODEL INPUT AND OUTPUT**

**FRIDAY NORTHBOUND DIRECTION**

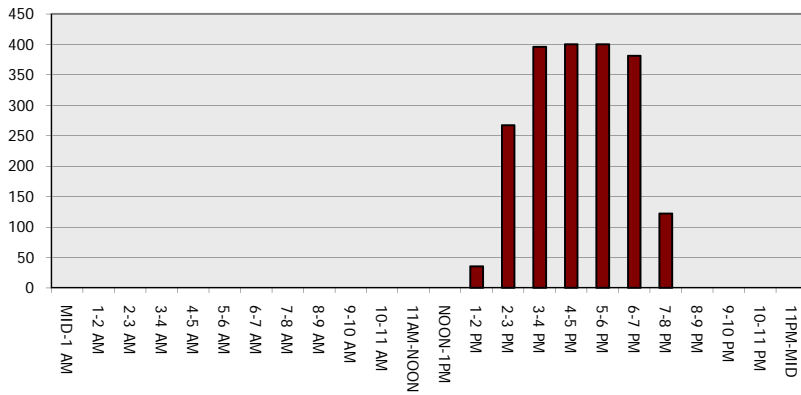
**Main Route - Traffic Demand (Vehicles Per Hour)**



**Main Route Average Delay Per Vehicle (Minutes)**



**Main Route - Average Queue Length (Vehicles)**



**Main Route - Average Speed (MPH)**

