

IH 43: USH 41 TO STH 54/57 (BROWN COUNTY) CONTINUOUS (24 HOUR) CLOSURE NO DIVERSION ROUTE (MAX QUEUE METHOD)	AUGUST
	Analyzed for 2009 Construction Season

SUMMARY OF TRAFFIC MODEL OUTPUT

MON-THUR SOUTHBOUND DIRECTION

TIME OF DAY	FLOWS AND CAPACITY IN VEH/HR							AVERAGE SPEEDS IN MPH			
	MAIN ROUTE		SITE CAPA CITY	FLOW		AV.DEL PER VEH (MINS)	AVERAGE QUEUE (VEH)	MAIN ROUTE		SITE	
	DEMAND FLOW	PCT HEAVY		MAIN ROUTE	'DIVER TED'			WITHOUT WORK ZONE	WITH WORK ZONE		
MID-1 AM	112	0.0	1500	112	0	0.43	0	66.2	61.2	45.0	
1-2 AM	75	0.0	1500	75	0	0.43	0	66.3	61.3	45.2	
2-3 AM	82	0.0	1500	82	0	0.43	0	66.3	61.3	45.1	
3-4 AM	102	0.0	1500	102	0	0.43	0	66.2	61.2	45.1	
4-5 AM	285	0.0	1500	285	0	0.45	0	65.8	60.8	44.3	
5-6 AM	822	0.0	1500	822	0	0.50	0	64.8	59.4	42.3	
6-7 AM	1286	0.0	1499	1286	0	0.74	0	64.0	56.4	36.1	
7-8 AM	1630	0.0	1499	1630	0	3.39	68	63.3	39.4	30.8	
8-9 AM	1183	0.0	1499	1183	0	1.70	35	64.2	49.1	37.4	
9-10 AM	1016	0.0	1500	1016	0	0.52	0	64.5	58.9	41.6	
10-11 AM	1090	0.0	1500	1090	0	0.53	0	64.3	58.7	41.4	
11AM-NOON	1110	0.0	1500	1110	0	0.53	0	64.3	58.7	41.3	
NOON-1PM	1187	0.0	1500	1187	0	0.62	0	64.1	57.7	38.9	
1-2 PM	1263	0.0	1500	1263	0	0.72	0	64.0	56.7	36.5	
2-3 PM	1354	0.0	1499	1354	0	0.83	0	63.8	55.5	34.1	
3-4 PM	1538	0.0	1499	1538	0	1.39	10	63.5	50.9	30.9	
4-5 PM	1742	0.0	1500	1742	0	6.52	160	63.2	29.2	30.8	
5-6 PM	1638	0.0	1499	1611	27	14.64+	370	63.3	17.5	30.8	
6-7 PM	1064	0.0	1499	1064	0	6.64	207	64.4	29.2	35.8	
7-8 PM	736	0.0	1500	736	0	0.49	0	65.0	59.6	42.6	
8-9 PM	650	0.0	1500	650	0	0.49	0	65.2	59.8	43.0	
9-10 PM	518	0.0	1500	518	0	0.47	0	65.4	60.2	43.4	
10-11 PM	362	0.0	1500	362	0	0.46	0	65.7	60.5	44.0	
11PM-MID	198	0.0	1500	198	0	0.44	0	66.0	61.0	44.7	

+ INDICATES QUEUEING EXCEEDS USER-SPECIFIED MAXIMUM LIMIT

----- SITE BREAKDOWN DELAYS -----	
BREAKDOWN DURATION (MINS)	0
RANGE OF QUEUE DELAY - MIN (VEH-H) MAX	0.0
AV BREAKDOWNS PER DAY	0.00
AV QUEUE DELAY/DAY (VEH-H)	0.0
AV TOTAL DELAY/DAY (VEH-H)	0.0

----- SITE ACCIDENT DELAYS -----	
BREAKDOWN DURATION (MINS)	0
RANGE OF QUEUE DELAY - MIN (VEH-H) MAX	0
AV BREAKDOWNS PER DAY	0
AV QUEUE DELAY/DAY (VEH-H)	0
AV TOTAL DELAY/DAY (VEH-H)	0

AVERAGE ACCIDENT NUMBERS (PIA/DAY)	
MAIN ROUTE WITHOUT WORKS	0.0198
MAIN ROUTE WITH WORKS	0.0184
'DIVERSION'	0.0001
PIA: Personal Injury Accidents	
IMPACTS ON ROAD USERS	
ROAD USER COSTS PER DAY	\$12,894
CONGESTED HOURS PER DAY*	1

*Delays Exceeding User-Specified Maximum

**IH 43: USH 41 TO STH 54/57 (BROWN COUNTY)
CONTINUOUS (24 HOUR) CLOSURE
NO DIVERSION ROUTE (MAX QUEUE METHOD)**

AUGUST

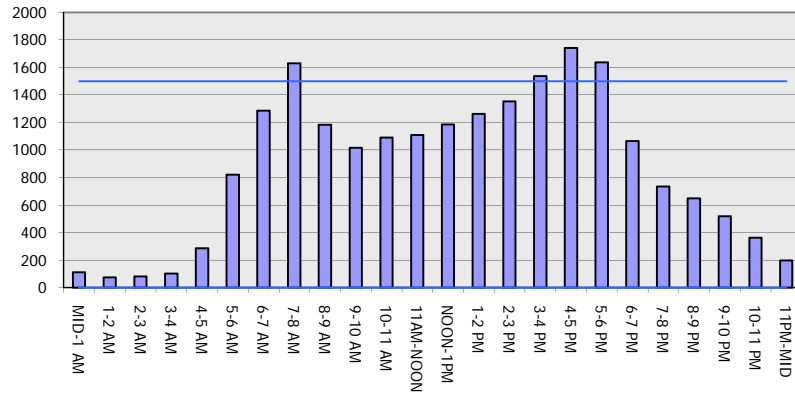
Analyzed for 2009
Construction Season

GRAPHICAL REPRESENTATION OF TRAFFIC MODEL INPUT AND OUTPUT

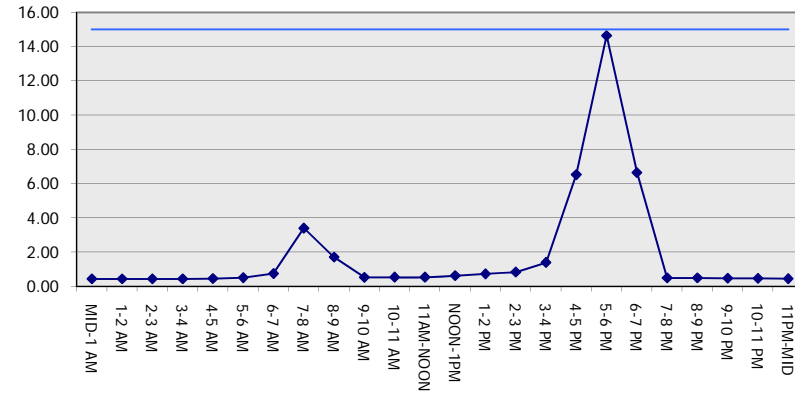
MON-THUR

SOUTHBOUND DIRECTION

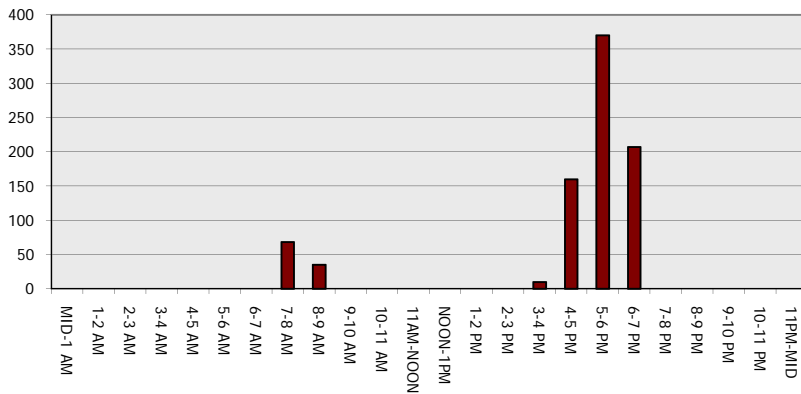
Main Route - Traffic Demand (Vehicles Per Hour)



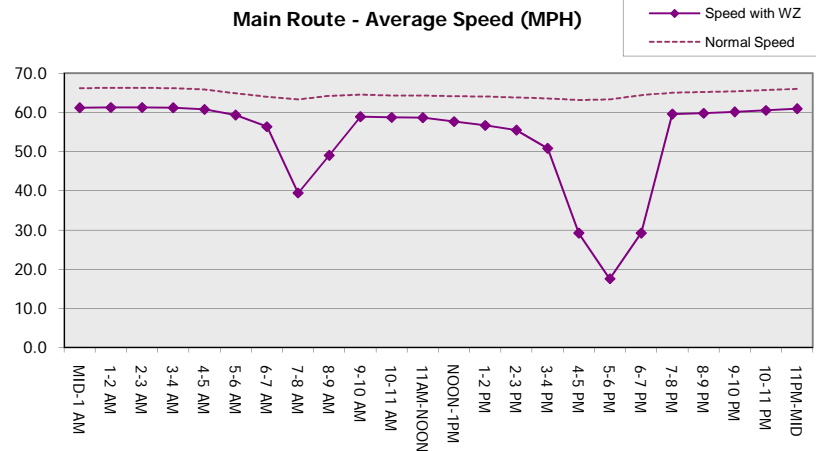
Main Route Average Delay Per Vehicle (Minutes)



Main Route - Average Queue Length (Vehicles)



Main Route - Average Speed (MPH)



IH 43: USH 41 TO STH 54/57 (BROWN COUNTY) CONTINUOUS (24 HOUR) CLOSURE NO DIVERSION ROUTE (MAX QUEUE METHOD)	AUGUST
	Analyzed for 2009 Construction Season

SUMMARY OF TRAFFIC MODEL OUTPUT

MON-THUR NORTHBOUND DIRECTION

TIME OF DAY	FLOWS AND CAPACITY IN VEH/HR							AVERAGE SPEEDS IN MPH		
	MAIN ROUTE		SITE CAPA CITY	FLOW		AV.DEL PER VEH (MINS)	AVERAGE QUEUE (VEH)	MAIN ROUTE		SITE
	DEMAND FLOW	PCT HEAVY		MAIN ROUTE	'DIVER TED'			WITHOUT WORK ZONE	WITH WORK ZONE	
MID-1 AM	128	0.0	1500	128	0	0.43	0	66.1	61.2	45.0
1-2 AM	81	0.0	1500	81	0	0.43	0	66.3	61.3	45.1
2-3 AM	84	0.0	1500	84	0	0.43	0	66.2	61.3	45.1
3-4 AM	98	0.0	1500	98	0	0.43	0	66.2	61.2	45.1
4-5 AM	230	0.0	1500	230	0	0.44	0	66.0	60.9	44.6
5-6 AM	612	0.0	1500	612	0	0.48	0	65.3	59.9	43.1
6-7 AM	1216	0.0	1500	1216	0	0.66	0	64.1	57.3	37.9
7-8 AM	1421	0.0	1500	1421	0	0.92	0	63.7	54.6	32.5
8-9 AM	1052	0.0	1500	1052	0	0.52	0	64.4	58.8	41.5
9-10 AM	951	0.0	1500	951	0	0.51	0	64.6	59.1	41.9
10-11 AM	1011	0.0	1500	1011	0	0.52	0	64.5	58.9	41.7
11AM-NOON	1087	0.0	1500	1087	0	0.53	0	64.3	58.7	41.4
NOON-1PM	1189	0.0	1500	1189	0	0.62	0	64.1	57.7	38.8
1-2 PM	1216	0.0	1499	1216	0	0.66	0	64.1	57.3	38.0
2-3 PM	1445	0.0	1499	1445	0	1.00	1	63.7	54.0	32.2
3-4 PM	1760	0.0	1500	1760	0	4.90	120	63.1	33.7	30.8
4-5 PM	1968	0.0	1499	1677	292	15.06+	382	62.7	17.1	30.8
5-6 PM	1813	0.0	1499	1458	355	15.64+	395	63.0	16.6	30.8
6-7 PM	1144	0.0	1499	1144	0	9.30	255	64.3	23.9	34.0
7-8 PM	771	0.0	1500	771	0	0.55	1	65.0	59.1	42.5
8-9 PM	645	0.0	1500	645	0	0.48	0	65.2	59.9	43.0
9-10 PM	482	0.0	1500	482	0	0.47	0	65.5	60.2	43.6
10-11 PM	346	0.0	1500	346	0	0.46	0	65.8	60.6	44.1
11PM-MID	219	0.0	1500	219	0	0.44	0	66.0	60.9	44.6

+ INDICATES QUEUEING EXCEEDS USER-SPECIFIED MAXIMUM LIMIT

----- SITE BREAKDOWN DELAYS -----	
BREAKDOWN DURATION (MINS)	0
RANGE OF QUEUE DELAY - MIN (VEH-H) MAX	0.0
AV BREAKDOWNS PER DAY	0.00
AV QUEUE DELAY/DAY (VEH-H)	0.0
AV TOTAL DELAY/DAY (VEH-H)	0.0

----- SITE ACCIDENT DELAYS -----	
BREAKDOWN DURATION (MINS)	0
RANGE OF QUEUE DELAY - MIN (VEH-H) MAX	0
AV BREAKDOWNS PER DAY	0
AV QUEUE DELAY/DAY (VEH-H)	0
AV TOTAL DELAY/DAY (VEH-H)	0

AVERAGE ACCIDENT NUMBERS (PIA/DAY)	
MAIN ROUTE WITHOUT WORKS	0.0197
MAIN ROUTE WITH WORKS	0.0177
'DIVERSION'	0.0014

PIA: Personal Injury Accidents

ECONOMIC IMPACT ON ROAD USERS	
ROAD USER COSTS PER DAY	\$18,736
CONGESTED HOURS PER DAY*	2

*Delays Exceeding User-Specified Maximum

**IH 43: USH 41 TO STH 54/57 (BROWN COUNTY)
CONTINUOUS (24 HOUR) CLOSURE
NO DIVERSION ROUTE (MAX QUEUE METHOD)**

AUGUST
Analyzed for 2009
Construction Season

GRAPHICAL REPRESENTATION OF TRAFFIC MODEL INPUT AND OUTPUT
MON-THUR NORTHBOUND DIRECTION

