

<b>IH 43: USH 41 TO STH 54/57 (BROWN COUNTY)                  CONTINUOUS (24 HOUR) CLOSURE                  NO DIVERSION ROUTE (MAX QUEUE METHOD)</b>	<b>AUGUST</b>
	Analyzed for 2009 Construction Season

**SUMMARY OF TRAFFIC MODEL OUTPUT**

FRIDAY      SOUTHBOUND DIRECTION

TIME OF DAY	FLOWS AND CAPACITY IN VEH/HR						AVERAGE SPEEDS IN MPH				
	MAIN ROUTE		SITE CAPA CITY	FLOW		AV.DEL PER VEH (MINS)	AVERAGE QUEUE (VEH)	MAIN ROUTE		SITE	
	DEMAND FLOW	PCT HEAVY		MAIN ROUTE	'DIVER TED'			WITHOUT WORK ZONE	WITH WORK ZONE		
MID-1 AM	146	0.0	1500	146	0	0.44	0	66.1	61.1	44.9	
1-2 AM	95	0.0	1500	95	0	0.43	0	66.2	61.3	45.1	
2-3 AM	101	0.0	1500	101	0	0.43	0	66.2	61.2	45.1	
3-4 AM	106	0.0	1500	106	0	0.43	0	66.2	61.2	45.1	
4-5 AM	271	0.0	1500	271	0	0.45	0	65.9	60.8	44.4	
5-6 AM	724	0.0	1500	724	0	0.49	0	65.0	59.6	42.7	
6-7 AM	1174	0.0	1500	1174	0	0.60	0	64.2	57.9	39.3	
7-8 AM	1466	0.0	1500	1466	0	0.98	0	63.7	54.1	31.5	
8-9 AM	1151	0.0	1500	1151	0	0.57	0	64.2	58.2	40.1	
9-10 AM	1072	0.0	1500	1072	0	0.53	0	64.4	58.7	41.4	
10-11 AM	1229	0.0	1500	1229	0	0.67	0	64.1	57.1	37.6	
11AM-NOON	1332	0.0	1500	1332	0	0.81	0	63.9	55.8	34.7	
NOON-1PM	1359	0.0	1499	1359	0	0.84	0	63.8	55.5	34.0	
1-2 PM	1482	0.0	1499	1482	0	1.03	0	63.7	53.7	31.2	
2-3 PM	1563	0.0	1500	1563	0	2.03	28	63.5	46.5	30.8	
3-4 PM	1690	0.0	1500	1690	0	6.48	155	63.2	29.3	30.8	
4-5 PM	1760	0.0	1500	1628	133	14.19+	360	63.1	17.9	30.8	
5-6 PM	1730	0.0	1500	1500	230	15.81+	400	63.2	16.5	30.8	
6-7 PM	1272	0.0	1500	1272	0	11.72	299	64.0	20.5	31.4	
7-8 PM	809	0.0	1500	809	0	1.01	19	64.9	54.8	42.2	
8-9 PM	698	0.0	1500	698	0	0.49	0	65.1	59.7	42.8	
9-10 PM	548	0.0	1500	548	0	0.48	0	65.4	60.1	43.3	
10-11 PM	440	0.0	1500	440	0	0.47	0	65.6	60.4	43.7	
11PM-MID	282	0.0	1500	282	0	0.45	0	65.9	60.8	44.3	

+ INDICATES QUEUEING EXCEEDS USER-SPECIFIED MAXIMUM LIMIT

*----- SITE BREAKDOWN DELAYS -----*	
BREAKDOWN DURATION (MINS)	0
RANGE OF QUEUE DELAY - MIN (VEH-H) MAX	0.0
AV BREAKDOWNS PER DAY	0.00
AV QUEUE DELAY/DAY (VEH-H)	0.0
AV TOTAL DELAY/DAY (VEH-H)	0.0

*----- SITE ACCIDENT DELAYS -----*	
BREAKDOWN DURATION (MINS)	0
RANGE OF QUEUE DELAY - MIN (VEH-H) MAX	0
AV BREAKDOWNS PER DAY	0
AV QUEUE DELAY/DAY (VEH-H)	0
AV TOTAL DELAY/DAY (VEH-H)	0

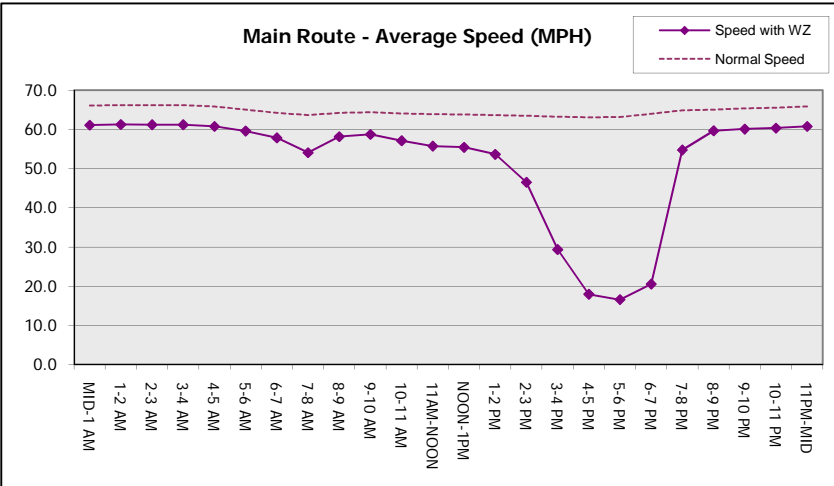
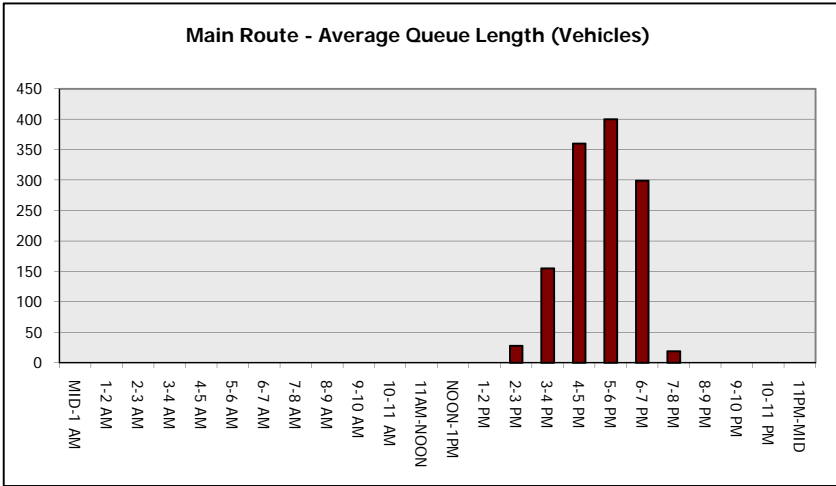
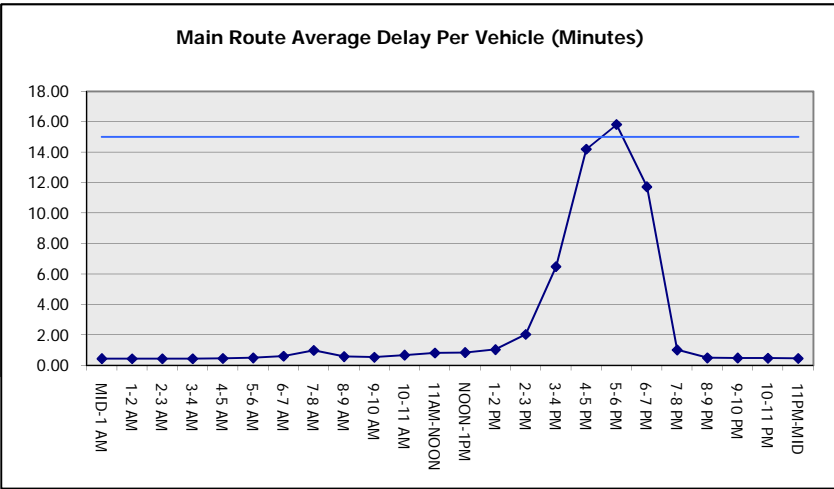
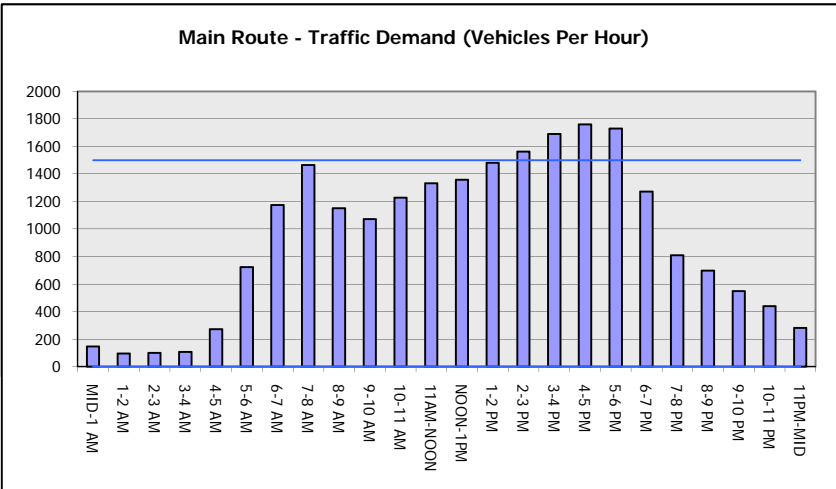
AVERAGE ACCIDENT NUMBERS (PIA/DAY)	
MAIN ROUTE WITHOUT WORKS	0.0211
MAIN ROUTE WITH WORKS	0.0193
'DIVERSION'	0.0008
PIA: Personal Injury Accidents	
IMPACTS ON ROAD USERS	
ROAD USER COSTS PER DAY	\$20,692
CONGESTED HOURS PER DAY*	2

\*Delays Exceeding User-Specified Maximum

**IH 43: USH 41 TO STH 54/57 (BROWN COUNTY)  
CONTINUOUS (24 HOUR) CLOSURE  
NO DIVERSION ROUTE (MAX QUEUE METHOD)**

**AUGUST**  
Analyzed for 2009  
Construction Season

**GRAPHICAL REPRESENTATION OF TRAFFIC MODEL INPUT AND OUTPUT**  
**FRIDAY SOUTHBOUND DIRECTION**



<b>IH 43: USH 41 TO STH 54/57 (BROWN COUNTY)                  CONTINUOUS (24 HOUR) CLOSURE                  NO DIVERSION ROUTE (MAX QUEUE METHOD)</b>	<b>AUGUST</b>
	Analyzed for 2009 Construction Season

**SUMMARY OF TRAFFIC MODEL OUTPUT**

FRIDAY NORTHBOUND DIRECTION

TIME OF DAY	FLOWS AND CAPACITY IN VEH/HR						AVERAGE SPEEDS IN MPH			
	MAIN ROUTE		SITE CAPA CITY	FLOW		AV.DEL PER VEH (MINS)	AVERAGE QUEUE (VEH)	MAIN ROUTE		SITE
	DEMAND FLOW	PCT HEAVY		MAIN ROUTE	'DIVER TED'			WITHOUT WORK ZONE	WITH WORK ZONE	
MID-1 AM	160	0.0	1500	160	0	0.44	0	66.1	61.1	44.8
1-2 AM	118	0.0	1500	118	0	0.43	0	66.1	61.2	45.0
2-3 AM	101	0.0	1500	101	0	0.43	0	66.2	61.2	45.1
3-4 AM	117	0.0	1500	117	0	0.43	0	66.1	61.2	45.0
4-5 AM	229	0.0	1500	229	0	0.44	0	66.0	60.9	44.6
5-6 AM	546	0.0	1500	546	0	0.48	0	65.4	60.1	43.3
6-7 AM	1126	0.0	1500	1126	0	0.54	0	64.3	58.6	41.0
7-8 AM	1369	0.0	1500	1369	0	0.86	0	63.8	55.3	33.7
8-9 AM	1124	0.0	1500	1124	0	0.54	0	64.3	58.6	41.0
9-10 AM	1119	0.0	1500	1119	0	0.53	0	64.3	58.6	41.2
10-11 AM	1288	0.0	1500	1288	0	0.75	0	64.0	56.3	35.8
11AM-NOON	1398	0.0	1499	1398	0	0.89	0	63.8	55.0	33.0
NOON-1PM	1546	0.0	1499	1546	0	1.50	13	63.5	50.1	30.8
1-2 PM	1702	0.0	1500	1702	0	5.65	134	63.2	31.5	30.8
2-3 PM	1951	0.0	1500	1698	253	14.66+	373	62.7	17.5	30.8
3-4 PM	2145	0.0	1500	1500	645	15.75+	400	62.4	16.5	30.8
4-5 PM	2302	0.0	1500	1500	802	15.72+	400	62.1	16.5	30.8
5-6 PM	2174	0.0	1500	1500	674	15.74+	400	62.3	16.5	30.8
6-7 PM	1575	0.0	1499	1423	152	15.33+	386	63.5	17.0	30.8
7-8 PM	1121	0.0	1499	1121	0	6.94	200	64.3	28.4	34.6
8-9 PM	874	0.0	1500	874	0	0.51	0	64.8	59.2	42.1
9-10 PM	729	0.0	1500	729	0	0.49	0	65.0	59.6	42.7
10-11 PM	615	0.0	1500	615	0	0.48	0	65.3	59.9	43.1
11PM-MID	428	0.0	1500	428	0	0.46	0	65.6	60.4	43.8

+ INDICATES QUEUEING EXCEEDS USER-SPECIFIED MAXIMUM LIMIT

*----- SITE BREAKDOWN DELAYS -----*	
BREAKDOWN DURATION (MINS)	0
RANGE OF QUEUE DELAY - MIN (VEH-H) MAX	0.0
AV BREAKDOWNS PER DAY	0.00
AV QUEUE DELAY/DAY (VEH-H)	0.0
AV TOTAL DELAY/DAY (VEH-H)	0.0

*----- SITE ACCIDENT DELAYS -----*	
BREAKDOWN DURATION (MINS)	0
RANGE OF QUEUE DELAY - MIN (VEH-H) MAX	0
AV BREAKDOWNS PER DAY	0
AV QUEUE DELAY/DAY (VEH-H)	0
AV TOTAL DELAY/DAY (VEH-H)	0

AVERAGE ACCIDENT NUMBERS (PIA/DAY)	
MAIN ROUTE WITHOUT WORKS	0.0243
MAIN ROUTE WITH WORKS	0.0204
'DIVERSION'	0.0055

PIA: Personal Injury Accidents

ECONOMIC IMPACT ON ROAD USERS	
ROAD USER COSTS PER DAY	\$41,448
CONGESTED HOURS PER DAY*	5

\*Delays Exceeding User-Specified Maximum

**IH 43: USH 41 TO STH 54/57 (BROWN COUNTY)  
CONTINUOUS (24 HOUR) CLOSURE  
NO DIVERSION ROUTE (MAX QUEUE METHOD)**

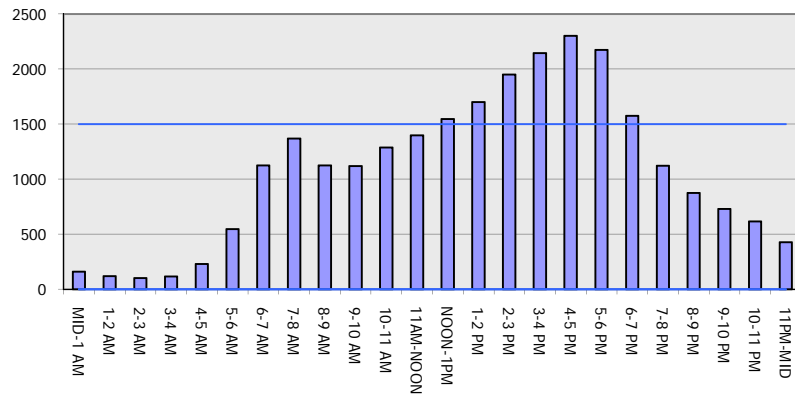
**AUGUST**

Analyzed for 2009  
Construction Season

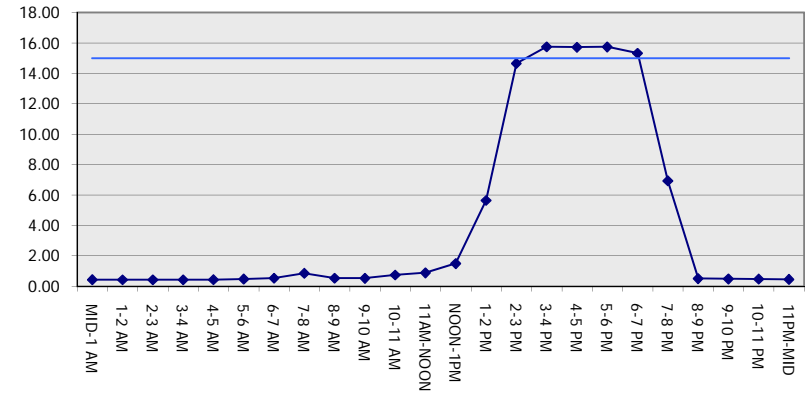
**GRAPHICAL REPRESENTATION OF TRAFFIC MODEL INPUT AND OUTPUT**

**FRIDAY NORTHBOUND DIRECTION**

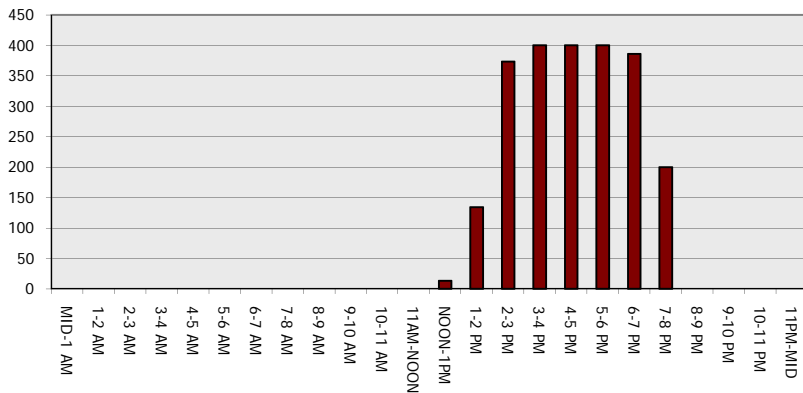
**Main Route - Traffic Demand (Vehicles Per Hour)**



**Main Route Average Delay Per Vehicle (Minutes)**



**Main Route - Average Queue Length (Vehicles)**



**Main Route - Average Speed (MPH)**

