

STH 29: CTH FF TO PACKERLAND (BROWN COUNTY) CONTINUOUS (24 HOUR) CLOSURE NO DIVERSION ROUTE (MAX QUEUE METHOD)	OCTOBER
	Analyzed for 2009 Construction Season

SUMMARY OF TRAFFIC MODEL OUTPUT

MON-THUR SOUTHBOUND DIRECTION

TIME OF DAY	FLOWS AND CAPACITY IN VEH/HR						AVERAGE SPEEDS IN MPH			
	MAIN ROUTE		SITE CAPA CITY	FLOW		AV.DEL PER VEH (MINS)	AVERAGE QUEUE (VEH)	MAIN ROUTE		SITE
	DEMAND FLOW	PCT HEAVY		MAIN ROUTE	'DIVER TED'			WITHOUT WORK ZONE	WITH WORK ZONE	
MID-1 AM	67	0.0	1500	67	0	0.45	0	60.2	50.7	41.8
1-2 AM	47	0.0	1500	47	0	0.45	0	60.2	50.7	41.9
2-3 AM	51	0.0	1500	51	0	0.45	0	60.2	50.7	41.8
3-4 AM	52	0.0	1500	52	0	0.45	0	60.2	50.7	41.8
4-5 AM	171	0.0	1500	171	0	0.46	0	60.2	50.5	41.4
5-6 AM	247	0.0	1500	247	0	0.47	0	60.2	50.3	41.1
6-7 AM	502	0.0	1500	502	0	0.50	0	60.2	49.7	40.3
7-8 AM	624	0.0	1500	624	0	0.52	0	60.2	49.5	39.9
8-9 AM	515	0.0	1500	515	0	0.50	0	60.2	49.7	40.2
9-10 AM	536	0.0	1500	536	0	0.51	0	60.2	49.7	40.2
10-11 AM	565	0.0	1500	565	0	0.51	0	60.2	49.6	40.1
11AM-NOON	584	0.0	1500	584	0	0.51	0	60.2	49.6	40.0
NOON-1PM	665	0.0	1500	665	0	0.52	0	60.2	49.4	39.7
1-2 PM	669	0.0	1500	669	0	0.52	0	60.2	49.4	39.7
2-3 PM	847	0.0	1500	847	0	0.54	0	60.2	49.1	39.2
3-4 PM	1113	0.0	1500	1113	0	0.58	0	60.2	48.5	38.4
4-5 PM	1296	0.0	1500	1296	0	0.81	0	60.2	45.0	33.4
5-6 PM	1134	0.0	1500	1134	0	0.60	0	60.2	48.1	37.8
6-7 PM	758	0.0	1500	758	0	0.53	0	60.2	49.2	39.5
7-8 PM	490	0.0	1500	490	0	0.50	0	60.2	49.8	40.3
8-9 PM	456	0.0	1500	456	0	0.50	0	60.2	49.9	40.4
9-10 PM	350	0.0	1500	350	0	0.48	0	60.2	50.1	40.8
10-11 PM	192	0.0	1500	192	0	0.46	0	60.2	50.4	41.3
11PM-MID	118	0.0	1500	118	0	0.46	0	60.2	50.6	41.6

----- SITE BREAKDOWN DELAYS -----	
BREAKDOWN DURATION (MINS)	0
RANGE OF QUEUE DELAY - MIN (VEH-H) MAX	0.0
AV BREAKDOWNS PER DAY	0.00
AV QUEUE DELAY/DAY (VEH-H)	0.0
AV TOTAL DELAY/DAY (VEH-H)	0.0

----- SITE ACCIDENT DELAYS -----	
BREAKDOWN DURATION (MINS)	0
RANGE OF QUEUE DELAY - MIN (VEH-H) MAX	0
AV BREAKDOWNS PER DAY	0
AV QUEUE DELAY/DAY (VEH-H)	0
AV TOTAL DELAY/DAY (VEH-H)	0

AVERAGE ACCIDENT NUMBERS (PIA/DAY)	
MAIN ROUTE WITHOUT WORKS	0.0048
MAIN ROUTE WITH WORKS	0.0061
'DIVERSION'	0.0000
PIA: Personal Injury Accidents	
IMPACTS ON ROAD USERS	
ROAD USER COSTS PER DAY	\$1,361
CONGESTED HOURS PER DAY*	0

*Delays Exceeding User-Specified Maximum

**STH 29: CTH FF TO PACKERLAND (BROWN COUNTY)
CONTINUOUS (24 HOUR) CLOSURE
NO DIVERSION ROUTE (MAX QUEUE METHOD)**

OCTOBER

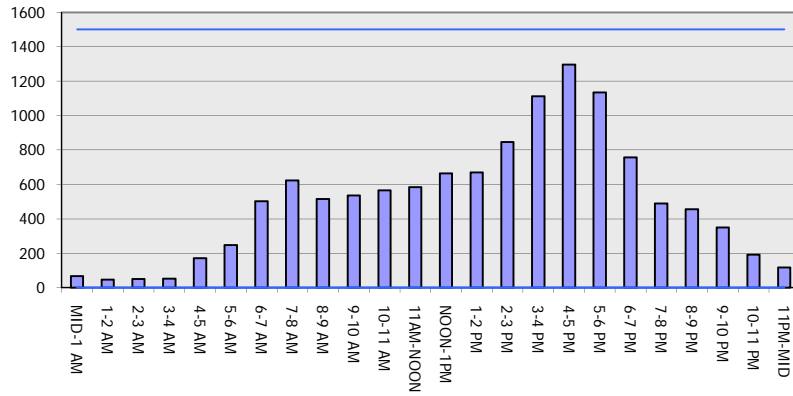
Analyzed for 2009
Construction Season

GRAPHICAL REPRESENTATION OF TRAFFIC MODEL INPUT AND OUTPUT

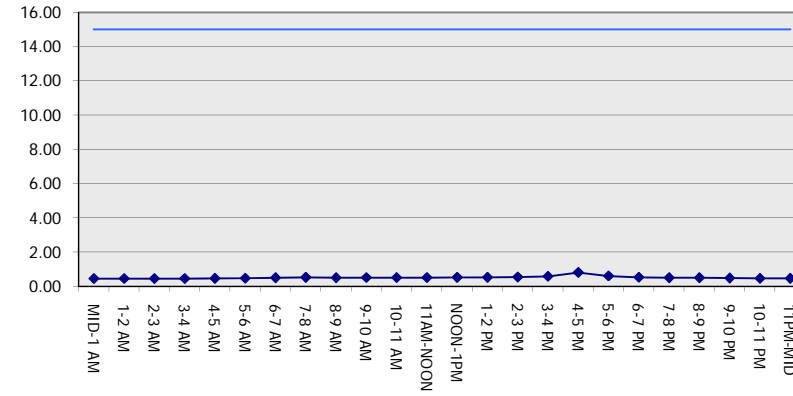
MON-THUR

SOUTHBOUND DIRECTION

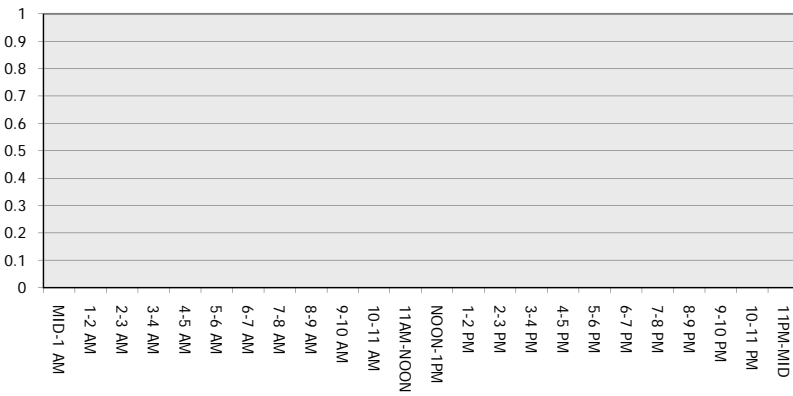
Main Route - Traffic Demand (Vehicles Per Hour)



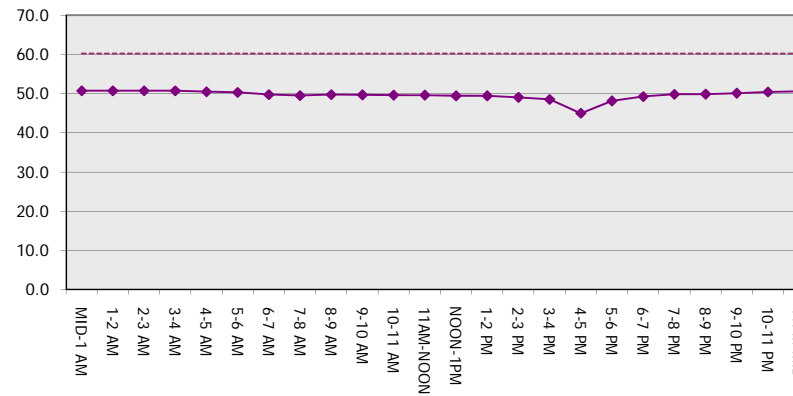
Main Route Average Delay Per Vehicle (Minutes)



Main Route - Average Queue Length (Vehicles)



Main Route - Average Speed (MPH)



STH 29: CTH FF TO PACKERLAND (BROWN COUNTY) CONTINUOUS (24 HOUR) CLOSURE NO DIVERSION ROUTE (MAX QUEUE METHOD)	OCTOBER
	Analyzed for 2009 Construction Season

SUMMARY OF TRAFFIC MODEL OUTPUT

MON-THUR NORTHBOUND DIRECTION

TIME OF DAY	FLOWS AND CAPACITY IN VEH/HR							AVERAGE SPEEDS IN MPH		
	MAIN ROUTE		SITE CAPA CITY	FLOW		AV.DEL PER VEH (MINS)	AVERAGE QUEUE (VEH)	MAIN ROUTE		SITE
	DEMAND FLOW	PCT HEAVY		MAIN ROUTE	'DIVER TED'			WITHOUT WORK ZONE	WITH WORK ZONE	
MID-1 AM	44	0.0	1500	44	0	0.45	0	60.2	50.7	41.9
1-2 AM	34	0.0	1500	34	0	0.44	0	60.2	50.8	41.9
2-3 AM	42	0.0	1500	42	0	0.45	0	60.2	50.7	41.9
3-4 AM	90	0.0	1500	90	0	0.45	0	60.2	50.7	41.7
4-5 AM	221	0.0	1500	221	0	0.47	0	60.2	50.4	41.2
5-6 AM	552	0.0	1500	552	0	0.51	0	60.2	49.7	40.1
6-7 AM	1005	0.0	1500	1005	0	0.56	0	60.2	48.7	38.7
7-8 AM	1269	0.0	1500	1269	0	0.78	0	60.2	45.5	34.1
8-9 AM	822	0.0	1500	822	0	0.54	0	60.2	49.1	39.2
9-10 AM	697	0.0	1500	697	0	0.53	0	60.2	49.4	39.7
10-11 AM	668	0.0	1500	668	0	0.52	0	60.2	49.4	39.7
11AM-NOON	649	0.0	1500	649	0	0.52	0	60.2	49.4	39.8
NOON-1PM	634	0.0	1500	634	0	0.52	0	60.2	49.5	39.9
1-2 PM	747	0.0	1500	747	0	0.53	0	60.2	49.2	39.5
2-3 PM	715	0.0	1500	715	0	0.53	0	60.2	49.3	39.6
3-4 PM	811	0.0	1500	811	0	0.54	0	60.2	49.1	39.3
4-5 PM	852	0.0	1500	852	0	0.55	0	60.2	49.1	39.2
5-6 PM	791	0.0	1500	791	0	0.54	0	60.2	49.2	39.4
6-7 PM	555	0.0	1500	555	0	0.51	0	60.2	49.7	40.1
7-8 PM	327	0.0	1500	327	0	0.48	0	60.2	50.1	40.9
8-9 PM	272	0.0	1500	272	0	0.47	0	60.2	50.2	41.0
9-10 PM	217	0.0	1500	217	0	0.47	0	60.2	50.4	41.2
10-11 PM	152	0.0	1500	152	0	0.46	0	60.2	50.5	41.5
11PM-MID	73	0.0	1500	73	0	0.45	0	60.2	50.7	41.7

----- SITE BREAKDOWN DELAYS -----	
BREAKDOWN DURATION (MINS)	0
RANGE OF QUEUE DELAY - MIN (VEH-H) MAX	0.0
AV BREAKDOWNS PER DAY	0.00
AV QUEUE DELAY/DAY (VEH-H)	0.0
AV TOTAL DELAY/DAY (VEH-H)	0.0

----- SITE ACCIDENT DELAYS -----	
BREAKDOWN DURATION (MINS)	0
RANGE OF QUEUE DELAY - MIN (VEH-H) MAX	0
AV BREAKDOWNS PER DAY	0
AV QUEUE DELAY/DAY (VEH-H)	0
AV TOTAL DELAY/DAY (VEH-H)	0

AVERAGE ACCIDENT NUMBERS (PIA/DAY)	
MAIN ROUTE WITHOUT WORKS	0.0048
MAIN ROUTE WITH WORKS	0.0062
'DIVERSION'	0.0000

PIA: Personal Injury Accidents

ECONOMIC IMPACT ON ROAD USERS	
ROAD USER COSTS PER DAY	\$1,370
CONGESTED HOURS PER DAY*	0

*Delays Exceeding User-Specified Maximum

**STH 29: CTH FF TO PACKERLAND (BROWN COUNTY)
CONTINUOUS (24 HOUR) CLOSURE
NO DIVERSION ROUTE (MAX QUEUE METHOD)**

OCTOBER

Analyzed for 2009
Construction Season

GRAPHICAL REPRESENTATION OF TRAFFIC MODEL INPUT AND OUTPUT
MON-THUR NORTHBOUND DIRECTION

