

**STH 29: CTH FF TO PACKERLAND (BROWN COUNTY)
CONTINUOUS (24 HOUR) CLOSURE
NO DIVERSION ROUTE (MAX QUEUE METHOD)**

AUGUST

Analyzed for 2009
Construction Season

SUMMARY OF TRAFFIC MODEL OUTPUT

SATURDAY SOUTHBOUND DIRECTION

TIME OF DAY	FLOWS AND CAPACITY IN VEH/HR						AVERAGE SPEEDS IN MPH			
	MAIN ROUTE		SITE CAPA CITY	FLOW		AV.DEL PER VEH (MINS)	AVERAGE QUEUE (VEH)	MAIN ROUTE		SITE
	DEMAND FLOW	PCT HEAVY		MAIN ROUTE	'DIVER TED'			WITHOUT WORK ZONE	WITH WORK ZONE	
MID-1 AM	183	0.0	1500	183	0	0.46	0	60.2	50.4	41.4
1-2 AM	84	0.0	1500	84	0	0.45	0	60.2	50.7	41.7
2-3 AM	75	0.0	1500	75	0	0.45	0	60.2	50.7	41.7
3-4 AM	71	0.0	1500	71	0	0.45	0	60.2	50.7	41.7
4-5 AM	96	0.0	1500	96	0	0.45	0	60.2	50.7	41.7
5-6 AM	132	0.0	1500	132	0	0.46	0	60.2	50.5	41.5
6-7 AM	271	0.0	1500	271	0	0.47	0	60.2	50.2	41.0
7-8 AM	426	0.0	1500	426	0	0.49	0	60.2	49.9	40.6
8-9 AM	604	0.0	1500	604	0	0.51	0	60.2	49.6	39.9
9-10 AM	747	0.0	1500	747	0	0.53	0	60.2	49.2	39.5
10-11 AM	932	0.0	1500	932	0	0.56	0	60.2	48.9	38.9
11AM-NOON	915	0.0	1500	915	0	0.55	0	60.2	48.9	39.0
NOON-1PM	931	0.0	1500	931	0	0.56	0	60.2	48.9	38.9
1-2 PM	860	0.0	1500	860	0	0.55	0	60.2	49.0	39.1
2-3 PM	831	0.0	1500	831	0	0.54	0	60.2	49.1	39.2
3-4 PM	730	0.0	1500	730	0	0.53	0	60.2	49.3	39.6
4-5 PM	709	0.0	1500	709	0	0.53	0	60.2	49.3	39.6
5-6 PM	644	0.0	1500	644	0	0.52	0	60.2	49.5	39.8
6-7 PM	528	0.0	1500	528	0	0.51	0	60.2	49.7	40.2
7-8 PM	435	0.0	1500	435	0	0.49	0	60.2	49.9	40.5
8-9 PM	363	0.0	1500	363	0	0.49	0	60.2	50.1	40.7
9-10 PM	355	0.0	1500	355	0	0.48	0	60.2	50.1	40.8
10-11 PM	260	0.0	1500	260	0	0.47	0	60.2	50.3	41.1
11PM-MID	154	0.0	1500	154	0	0.46	0	60.2	50.5	41.5

----- SITE BREAKDOWN DELAYS -----

BREAKDOWN DURATION (MINS)	0
RANGE OF QUEUE DELAY - MIN (VEH-H) MAX	0.0
AV BREAKDOWNS PER DAY	0.00
AV QUEUE DELAY/DAY (VEH-H)	0.0
AV TOTAL DELAY/DAY (VEH-H)	0.0

----- SITE ACCIDENT DELAYS -----

BREAKDOWN DURATION (MINS)	0
RANGE OF QUEUE DELAY - MIN (VEH-H) MAX	0
AV BREAKDOWNS PER DAY	0
AV QUEUE DELAY/DAY (VEH-H)	0
AV TOTAL DELAY/DAY (VEH-H)	0

AVERAGE ACCIDENT NUMBERS (PIA/DAY)

MAIN ROUTE WITHOUT WORKS	0.0045
MAIN ROUTE WITH WORKS	0.0057
'DIVERSION'	0.0000

PIA: Personal Injury Accidents

IMPACTS ON ROAD USERS

ROAD USER COSTS PER DAY	\$1,528
CONGESTED HOURS PER DAY*	0

*Delays Exceeding User-Specified Maximum

**STH 29: CTH FF TO PACKERLAND (BROWN COUNTY)
CONTINUOUS (24 HOUR) CLOSURE
NO DIVERSION ROUTE (MAX QUEUE METHOD)**

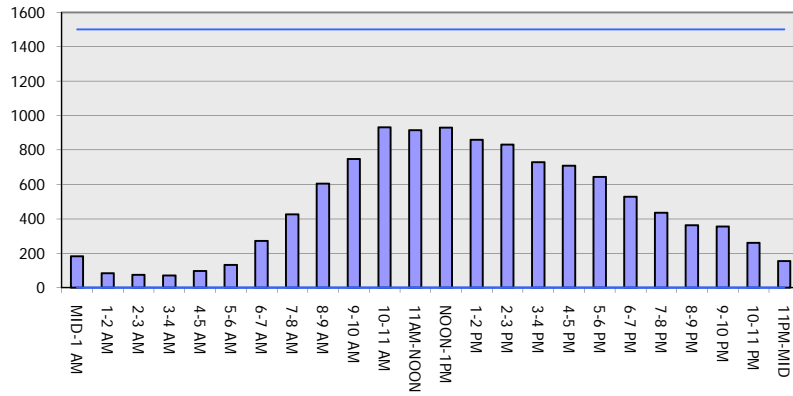
AUGUST

Analyzed for 2009
Construction Season

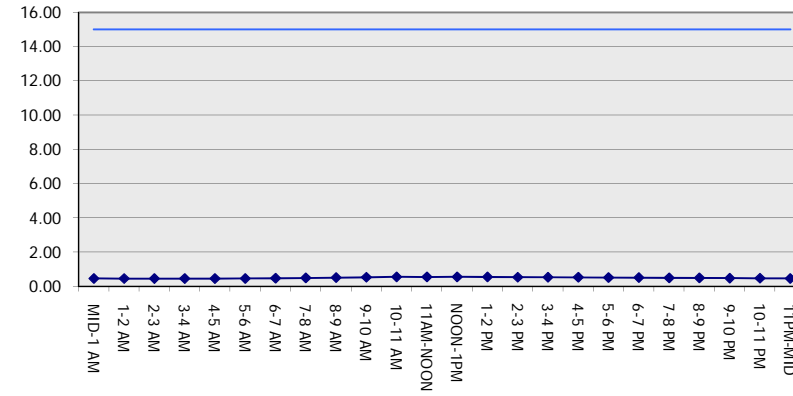
GRAPHICAL REPRESENTATION OF TRAFFIC MODEL INPUT AND OUTPUT

SATURDAY SOUTHBOUND DIRECTION

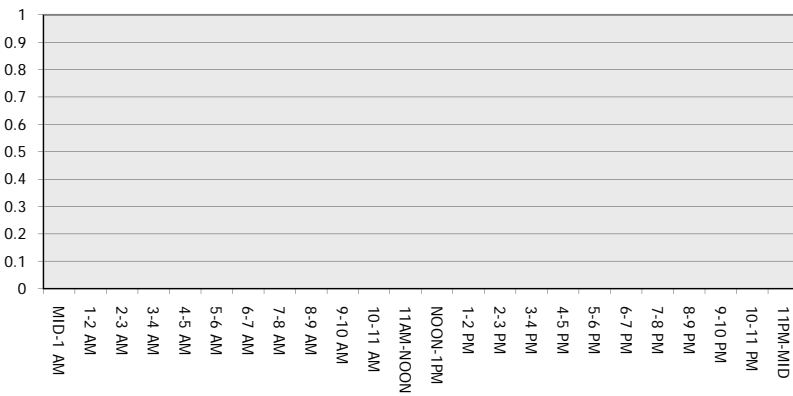
Main Route - Traffic Demand (Vehicles Per Hour)



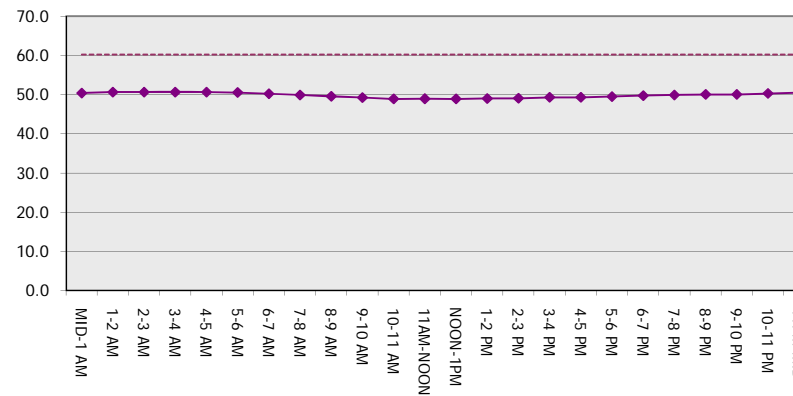
Main Route Average Delay Per Vehicle (Minutes)



Main Route - Average Queue Length (Vehicles)



Main Route - Average Speed (MPH)



STH 29: CTH FF TO PACKERLAND (BROWN COUNTY) CONTINUOUS (24 HOUR) CLOSURE NO DIVERSION ROUTE (MAX QUEUE METHOD)	AUGUST
	Analyzed for 2009 Construction Season

SUMMARY OF TRAFFIC MODEL OUTPUT

SATURDAY NORTHBOUND DIRECTION

TIME OF DAY	FLOWS AND CAPACITY IN VEH/HR						AVERAGE SPEEDS IN MPH			
	MAIN ROUTE		SITE CAPA CITY	FLOW		AV.DEL PER VEH (MINS)	AVERAGE QUEUE (VEH)	MAIN ROUTE		SITE
	DEMAND FLOW	PCT HEAVY		MAIN ROUTE	'DIVER TED'			WITHOUT WORK ZONE	WITH WORK ZONE	
MID-1 AM	124	0.0	1500	124	0	0.46	0	60.2	50.6	41.5
1-2 AM	70	0.0	1500	70	0	0.45	0	60.2	50.7	41.7
2-3 AM	77	0.0	1500	77	0	0.45	0	60.2	50.7	41.7
3-4 AM	91	0.0	1500	91	0	0.45	0	60.2	50.7	41.7
4-5 AM	121	0.0	1500	121	0	0.46	0	60.2	50.6	41.5
5-6 AM	195	0.0	1500	195	0	0.46	0	60.2	50.4	41.3
6-7 AM	196	0.0	1500	196	0	0.46	0	60.2	50.4	41.3
7-8 AM	364	0.0	1500	364	0	0.49	0	60.2	50.1	40.7
8-9 AM	472	0.0	1500	472	0	0.50	0	60.2	49.8	40.4
9-10 AM	692	0.0	1500	692	0	0.53	0	60.2	49.4	39.7
10-11 AM	920	0.0	1500	920	0	0.55	0	60.2	48.9	38.9
11AM-NOON	892	0.0	1500	892	0	0.55	0	60.2	48.9	39.1
NOON-1PM	847	0.0	1500	847	0	0.54	0	60.2	49.1	39.2
1-2 PM	795	0.0	1500	795	0	0.54	0	60.2	49.2	39.4
2-3 PM	717	0.0	1500	717	0	0.53	0	60.2	49.3	39.6
3-4 PM	705	0.0	1500	705	0	0.53	0	60.2	49.4	39.6
4-5 PM	711	0.0	1500	711	0	0.53	0	60.2	49.3	39.6
5-6 PM	718	0.0	1500	718	0	0.53	0	60.2	49.3	39.6
6-7 PM	509	0.0	1500	509	0	0.50	0	60.2	49.7	40.2
7-8 PM	448	0.0	1500	448	0	0.50	0	60.2	49.9	40.5
8-9 PM	434	0.0	1500	434	0	0.49	0	60.2	49.9	40.5
9-10 PM	352	0.0	1500	352	0	0.48	0	60.2	50.1	40.8
10-11 PM	280	0.0	1500	280	0	0.47	0	60.2	50.2	41.0
11PM-MID	239	0.0	1500	239	0	0.47	0	60.2	50.3	41.2

----- SITE BREAKDOWN DELAYS -----	
BREAKDOWN DURATION (MINS)	0
RANGE OF QUEUE DELAY - MIN (VEH-H) MAX	0.0
AV BREAKDOWNS PER DAY	0.00
AV QUEUE DELAY/DAY (VEH-H)	0.0
AV TOTAL DELAY/DAY (VEH-H)	0.0

----- SITE ACCIDENT DELAYS -----	
BREAKDOWN DURATION (MINS)	0
RANGE OF QUEUE DELAY - MIN (VEH-H) MAX	0
AV BREAKDOWNS PER DAY	0
AV QUEUE DELAY/DAY (VEH-H)	0
AV TOTAL DELAY/DAY (VEH-H)	0

AVERAGE ACCIDENT NUMBERS (PIA/DAY)	
MAIN ROUTE WITHOUT WORKS	0.0043
MAIN ROUTE WITH WORKS	0.0055
'DIVERSION'	0.0000

PIA: Personal Injury Accidents

ECONOMIC IMPACT ON ROAD USERS	
ROAD USER COSTS PER DAY	\$1,465
CONGESTED HOURS PER DAY*	0

*Delays Exceeding User-Specified Maximum

**STH 29: CTH FF TO PACKERLAND (BROWN COUNTY)
CONTINUOUS (24 HOUR) CLOSURE
NO DIVERSION ROUTE (MAX QUEUE METHOD)**

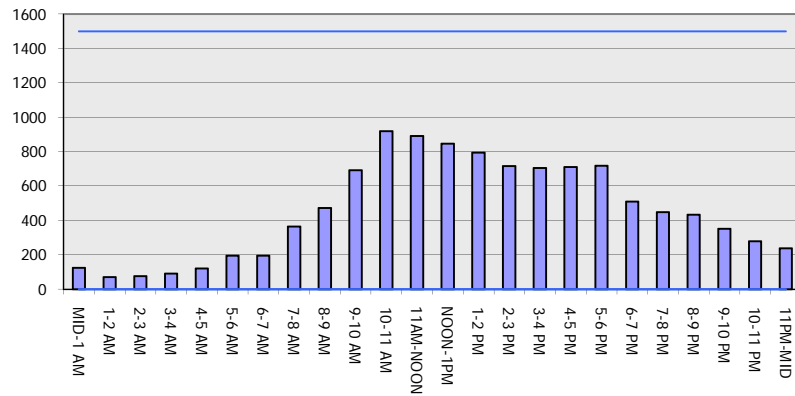
AUGUST

Analyzed for 2009
Construction Season

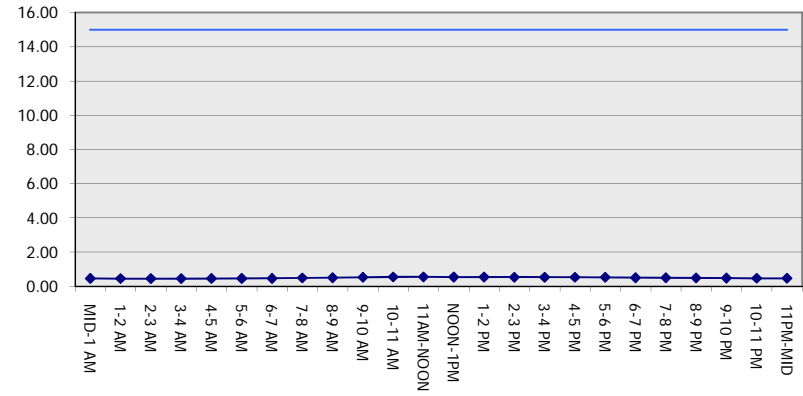
GRAPHICAL REPRESENTATION OF TRAFFIC MODEL INPUT AND OUTPUT

SATURDAY NORTHBOUND DIRECTION

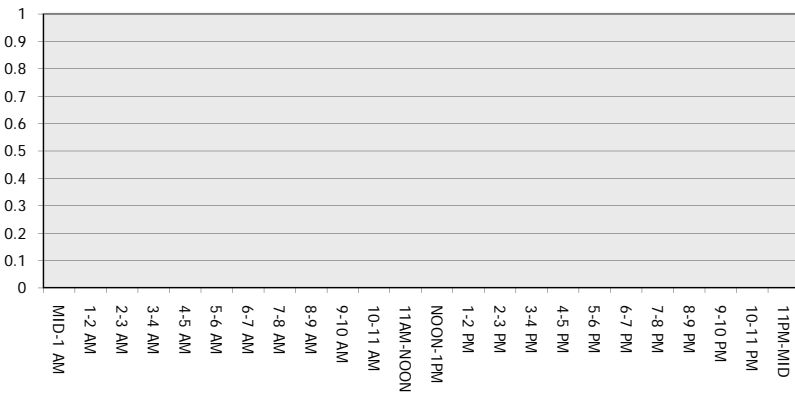
Main Route - Traffic Demand (Vehicles Per Hour)



Main Route Average Delay Per Vehicle (Minutes)



Main Route - Average Queue Length (Vehicles)



Main Route - Average Speed (MPH)

