

USH 41: IH 43 TO STH 29 (BROWN COUNTY) CONTINUOUS (24 HOUR) CLOSURE NO DIVERSION ROUTE (MAX QUEUE METHOD)	OCTOBER
	Analyzed for 2009 Construction Season

SUMMARY OF TRAFFIC MODEL OUTPUT

SUNDAY SOUTHBOUND DIRECTION

TIME OF DAY	FLOWS AND CAPACITY IN VEH/HR						AVERAGE SPEEDS IN MPH			
	MAIN ROUTE		SITE CAPA CITY	FLOW		AV.DEL PER VEH (MINS)	AVERAGE QUEUE (VEH)	MAIN ROUTE		SITE
	DEMAND FLOW	PCT HEAVY		MAIN ROUTE	'DIVER TED'			WITHOUT WORK ZONE	WITH WORK ZONE	
MID-1 AM	238	0.0	1500	238	0	0.45	0	66.0	53.0	44.5
1-2 AM	157	0.0	1500	157	0	0.44	0	66.1	53.2	44.8
2-3 AM	141	0.0	1500	141	0	0.44	0	66.1	53.3	44.9
3-4 AM	91	0.0	1500	91	0	0.43	0	66.2	53.5	45.1
4-5 AM	132	0.0	1500	132	0	0.44	0	66.1	53.3	45.0
5-6 AM	294	0.0	1500	294	0	0.45	0	65.8	52.8	44.3
6-7 AM	359	0.0	1500	359	0	0.46	0	65.7	52.5	44.0
7-8 AM	625	0.0	1500	625	0	0.48	0	65.2	51.7	43.0
8-9 AM	1038	0.0	1499	1038	0	0.56	0	64.5	49.5	40.4
9-10 AM	1824	0.0	1499	1824	0	4.55	127	63.0	19.2	30.8
10-11 AM	2154	0.0	1499	1583	571	16.57+	421	62.3	8.8	30.8
11AM-NOON	2184	0.0	1500	1504	680	16.90+	429	62.3	8.7	30.8
NOON-1PM	2111	0.0	1500	1503	608	16.90+	429	62.5	8.7	30.8
1-2 PM	2117	0.0	1500	1503	614	16.90+	429	62.4	8.7	30.8
2-3 PM	2216	0.0	1500	1502	714	16.90+	429	62.3	8.7	30.8
3-4 PM	2061	0.0	1500	1502	559	16.89+	429	62.5	8.7	30.8
4-5 PM	2041	0.0	1500	1501	539	16.89+	429	62.6	8.7	30.8
5-6 PM	1723	0.0	1500	1501	222	16.89+	428	63.2	8.7	30.8
6-7 PM	1328	0.0	1499	1328	0	14.37+	363	63.9	9.4	30.8
7-8 PM	881	0.0	1500	881	0	1.51	59	64.8	35.8	41.2
8-9 PM	632	0.0	1500	632	0	0.48	0	65.2	51.6	43.0
9-10 PM	455	0.0	1500	455	0	0.47	0	65.5	52.2	43.7
10-11 PM	308	0.0	1500	308	0	0.45	0	65.8	52.7	44.3
11PM-MID	217	0.0	1500	217	0	0.44	0	66.0	53.0	44.6

+ INDICATES QUEUEING EXCEEDS USER-SPECIFIED MAXIMUM LIMIT

----- SITE BREAKDOWN DELAYS -----	
BREAKDOWN DURATION (MINS)	0
RANGE OF QUEUE DELAY - MIN (VEH-H) MAX	0.0
AV BREAKDOWNS PER DAY	0.00
AV QUEUE DELAY/DAY (VEH-H)	0.0
AV TOTAL DELAY/DAY (VEH-H)	0.0

----- SITE ACCIDENT DELAYS -----	
BREAKDOWN DURATION (MINS)	0
RANGE OF QUEUE DELAY - MIN (VEH-H) MAX	0
AV BREAKDOWNS PER DAY	0
AV QUEUE DELAY/DAY (VEH-H)	0
AV TOTAL DELAY/DAY (VEH-H)	0

AVERAGE ACCIDENT NUMBERS (PIA/DAY)	
MAIN ROUTE WITHOUT WORKS	0.0081
MAIN ROUTE WITH WORKS	0.0053
'DIVERSION'	0.0033
PIA: Personal Injury Accidents	
IMPACTS ON ROAD USERS	
ROAD USER COSTS PER DAY	\$88,068
CONGESTED HOURS PER DAY*	9

*Delays Exceeding User-Specified Maximum

**USH 41: IH 43 TO STH 29 (BROWN COUNTY)
CONTINUOUS (24 HOUR) CLOSURE
NO DIVERSION ROUTE (MAX QUEUE METHOD)**

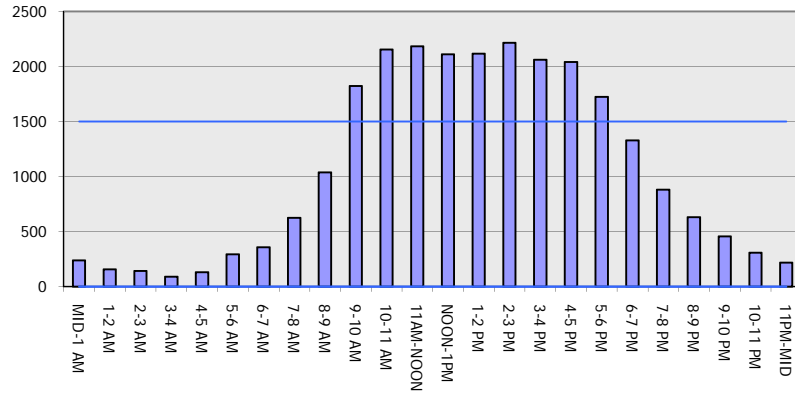
OCTOBER

Analyzed for 2009
Construction Season

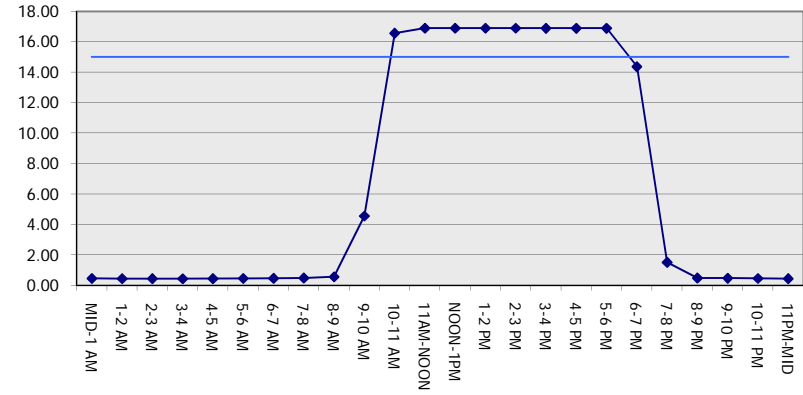
GRAPHICAL REPRESENTATION OF TRAFFIC MODEL INPUT AND OUTPUT

SUNDAY SOUTHBOUND DIRECTION

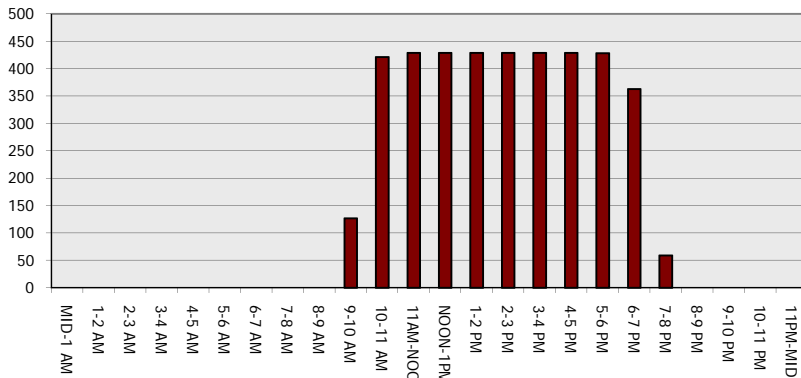
Main Route - Traffic Demand (Vehicles Per Hour)



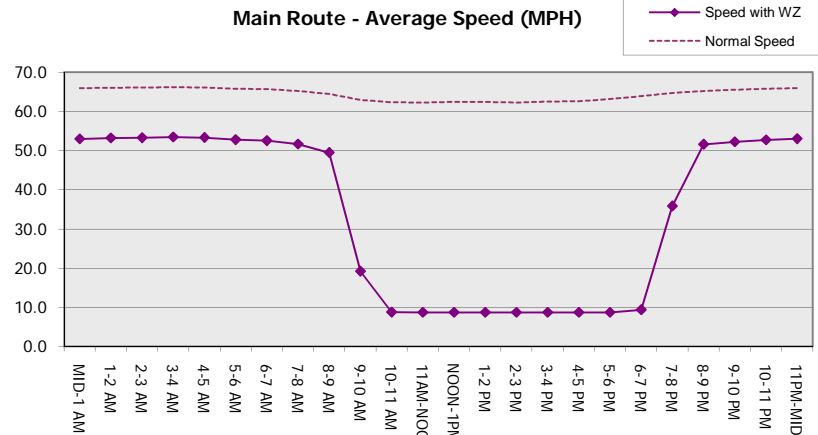
Main Route Average Delay Per Vehicle (Minutes)



Main Route - Average Queue Length (Vehicles)



Main Route - Average Speed (MPH)



USH 41: IH 43 TO STH 29 (BROWN COUNTY) CONTINUOUS (24 HOUR) CLOSURE NO DIVERSION ROUTE (MAX QUEUE METHOD)	OCTOBER
	Analyzed for 2009 Construction Season

SUMMARY OF TRAFFIC MODEL OUTPUT

SUNDAY NORTHBOUND DIRECTION

TIME OF DAY	FLOWS AND CAPACITY IN VEH/HR							AVERAGE SPEEDS IN MPH		
	MAIN ROUTE		SITE CAPA CITY	FLOW		AV.DEL PER VEH (MINS)	AVERAGE QUEUE (VEH)	MAIN ROUTE		SITE
	DEMAND FLOW	PCT HEAVY		MAIN ROUTE	'DIVER TED'			WITHOUT WORK ZONE	WITH WORK ZONE	
MID-1 AM	364	0.0	1500	364	0	0.46	0	65.7	52.5	44.0
1-2 AM	202	0.0	1500	202	0	0.44	0	66.0	53.1	44.6
2-3 AM	170	0.0	1500	170	0	0.44	0	66.1	53.2	44.8
3-4 AM	111	0.0	1500	111	0	0.43	0	66.2	53.4	45.0
4-5 AM	145	0.0	1500	145	0	0.44	0	66.1	53.3	44.9
5-6 AM	206	0.0	1500	206	0	0.44	0	66.0	53.1	44.6
6-7 AM	300	0.0	1500	300	0	0.45	0	65.8	52.8	44.3
7-8 AM	377	0.0	1500	377	0	0.46	0	65.7	52.5	44.0
8-9 AM	565	0.0	1500	565	0	0.48	0	65.3	51.9	43.3
9-10 AM	830	0.0	1500	830	0	0.50	0	64.8	51.0	42.3
10-11 AM	1183	0.0	1499	1183	0	0.62	0	64.2	48.2	38.9
11AM-NOON	1498	0.0	1499	1498	0	1.19	5	63.6	39.1	31.4
NOON-1PM	1580	0.0	1500	1580	0	3.30	64	63.5	23.1	30.8
1-2 PM	1467	0.0	1499	1467	0	4.21	86	63.7	19.7	30.8
2-3 PM	1589	0.0	1500	1589	0	4.79	104	63.4	17.9	30.8
3-4 PM	1785	0.0	1500	1785	0	11.63+	297	63.0	10.5	30.8
4-5 PM	1730	0.0	1499	1497	233	16.89+	428	63.2	8.7	30.8
5-6 PM	1584	0.0	1499	1480	104	16.81+	426	63.4	8.8	30.8
6-7 PM	1249	0.0	1499	1249	0	12.47+	317	64.1	10.1	31.2
7-8 PM	871	0.0	1500	871	0	0.98	26	64.8	42.3	42.0
8-9 PM	588	0.0	1500	588	0	0.48	0	65.3	51.8	43.2
9-10 PM	483	0.0	1500	483	0	0.47	0	65.5	52.1	43.6
10-11 PM	416	0.0	1500	416	0	0.46	0	65.6	52.4	43.8
11PM-MID	882	0.0	1500	882	0	0.51	0	64.8	50.8	42.1

+ INDICATES QUEUEING EXCEEDS USER-SPECIFIED MAXIMUM LIMIT

----- SITE BREAKDOWN DELAYS -----	
BREAKDOWN DURATION (MINS)	0
RANGE OF QUEUE DELAY - MIN (VEH-H) MAX	0.0
AV BREAKDOWNS PER DAY	0.00
AV QUEUE DELAY/DAY (VEH-H)	0.0
AV TOTAL DELAY/DAY (VEH-H)	0.0

----- SITE ACCIDENT DELAYS -----	
BREAKDOWN DURATION (MINS)	0
RANGE OF QUEUE DELAY - MIN (VEH-H) MAX	0
AV BREAKDOWNS PER DAY	0
AV QUEUE DELAY/DAY (VEH-H)	0
AV TOTAL DELAY/DAY (VEH-H)	0

AVERAGE ACCIDENT NUMBERS (PIA/DAY)	
MAIN ROUTE WITHOUT WORKS	0.0064
MAIN ROUTE WITH WORKS	0.0050
'DIVERSION'	0.0002

PIA: Personal Injury Accidents

ECONOMIC IMPACT ON ROAD USERS	
ROAD USER COSTS PER DAY	\$33,211
CONGESTED HOURS PER DAY*	4

*Delays Exceeding User-Specified Maximum

**USH 41: IH 43 TO STH 29 (BROWN COUNTY)
CONTINUOUS (24 HOUR) CLOSURE
NO DIVERSION ROUTE (MAX QUEUE METHOD)**

OCTOBER

Analyzed for 2009
Construction Season

GRAPHICAL REPRESENTATION OF TRAFFIC MODEL INPUT AND OUTPUT
SUNDAY NORTHBOUND DIRECTION

