

<b>USH 41: CTH M TO IH 43 (BROWN COUNTY)                  CONTINUOUS (24 HOUR) CLOSURE                  NO DIVERSION ROUTE (MAX QUEUE METHOD)</b>	<b>OCTOBER</b>
	Analyzed for 2009 Construction Season

**SUMMARY OF TRAFFIC MODEL OUTPUT**

SATURDAY SOUTHBOUND DIRECTION

TIME OF DAY	FLOWS AND CAPACITY IN VEH/HR						AVERAGE SPEEDS IN MPH				
	MAIN ROUTE		SITE CAPA CITY	FLOW		AV.DEL PER VEH (MINS)	AVERAGE QUEUE (VEH)	MAIN ROUTE		SITE	
	DEMAND FLOW	PCT HEAVY		MAIN ROUTE	'DIVER TED'			WITHOUT WORK ZONE	WITH WORK ZONE		
MID-1 AM	138	0.0	1500	138	0	0.44	0	66.1	54.3	45.0	
1-2 AM	92	0.0	1500	92	0	0.43	0	66.2	54.4	45.1	
2-3 AM	114	0.0	1500	114	0	0.43	0	66.2	54.3	45.0	
3-4 AM	87	0.0	1500	87	0	0.43	0	66.2	54.5	45.1	
4-5 AM	238	0.0	1500	238	0	0.45	0	66.0	53.9	44.5	
5-6 AM	456	0.0	1500	456	0	0.47	0	65.5	53.2	43.7	
6-7 AM	657	0.0	1500	657	0	0.49	0	65.1	52.5	42.9	
7-8 AM	821	0.0	1500	821	0	0.50	0	64.8	52.0	42.3	
8-9 AM	1326	0.0	1499	1326	0	0.79	0	63.9	46.1	35.0	
9-10 AM	1583	0.0	1499	1583	0	1.83	25	63.5	33.7	30.8	
10-11 AM	1826	0.0	1500	1826	0	9.22	240	63.0	12.5	30.8	
11AM-NOON	1761	0.0	1499	1502	259	16.74+	424	63.1	9.0	30.8	
NOON-1PM	1700	0.0	1500	1502	198	16.74+	424	63.2	9.0	30.8	
1-2 PM	1661	0.0	1500	1502	159	16.74+	424	63.3	9.0	30.8	
2-3 PM	1622	0.0	1500	1501	121	16.74+	424	63.3	9.0	30.8	
3-4 PM	1601	0.0	1500	1501	100	16.74+	424	63.4	9.0	30.8	
4-5 PM	1740	0.0	1500	1501	239	16.74+	424	63.2	9.0	30.8	
5-6 PM	1646	0.0	1500	1501	145	16.74+	424	63.3	9.0	30.8	
6-7 PM	1487	0.0	1500	1487	0	16.34+	413	63.6	9.1	30.8	
7-8 PM	1629	0.0	1499	1509	120	16.70+	423	63.3	9.0	30.8	
8-9 PM	1200	0.0	1499	1200	0	11.24+	293	64.1	11.2	32.4	
9-10 PM	723	0.0	1500	723	0	0.69	9	65.0	48.5	42.6	
10-11 PM	410	0.0	1500	410	0	0.46	0	65.6	53.3	43.8	
11PM-MID	262	0.0	1500	262	0	0.45	0	65.9	53.8	44.5	

+ INDICATES QUEUEING EXCEEDS USER-SPECIFIED MAXIMUM LIMIT

*----- SITE BREAKDOWN DELAYS -----*	
BREAKDOWN DURATION (MINS)	0
RANGE OF QUEUE DELAY - MIN (VEH-H) MAX	0.0
AV BREAKDOWNS PER DAY	0.00
AV QUEUE DELAY/DAY (VEH-H)	0.0
AV TOTAL DELAY/DAY (VEH-H)	0.0

*----- SITE ACCIDENT DELAYS -----*	
BREAKDOWN DURATION (MINS)	0
RANGE OF QUEUE DELAY - MIN (VEH-H) MAX	0
AV BREAKDOWNS PER DAY	0
AV QUEUE DELAY/DAY (VEH-H)	0
AV TOTAL DELAY/DAY (VEH-H)	0

AVERAGE ACCIDENT NUMBERS (PIA/DAY)	
MAIN ROUTE WITHOUT WORKS	0.0087
MAIN ROUTE WITH WORKS	0.0067
'DIVERSION'	0.0011
PIA: Personal Injury Accidents	
IMPACTS ON ROAD USERS	
ROAD USER COSTS PER DAY	\$79,631
CONGESTED HOURS PER DAY*	10

\*Delays Exceeding User-Specified Maximum

**USH 41: CTH M TO IH 43 (BROWN COUNTY)  
CONTINUOUS (24 HOUR) CLOSURE  
NO DIVERSION ROUTE (MAX QUEUE METHOD)**

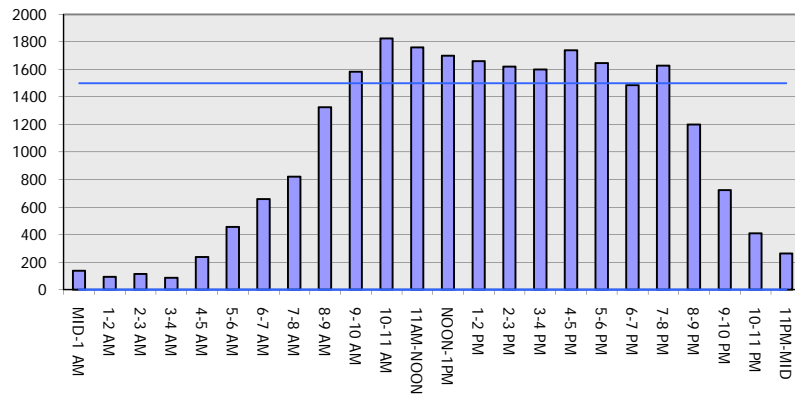
**OCTOBER**

Analyzed for 2009  
Construction Season

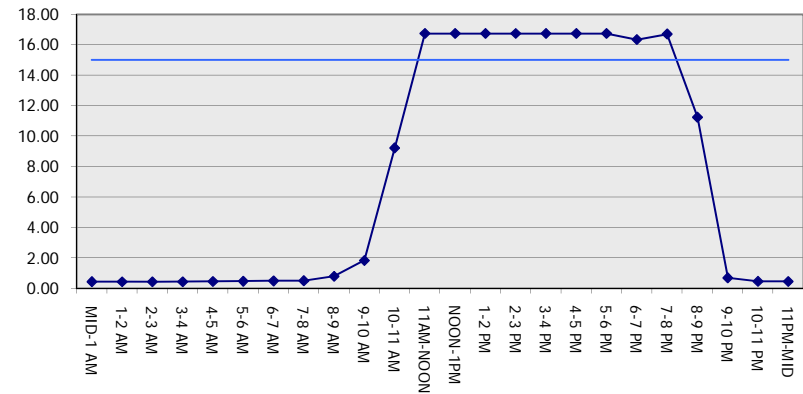
**GRAPHICAL REPRESENTATION OF TRAFFIC MODEL INPUT AND OUTPUT**

**SATURDAY SOUTHBOUND DIRECTION**

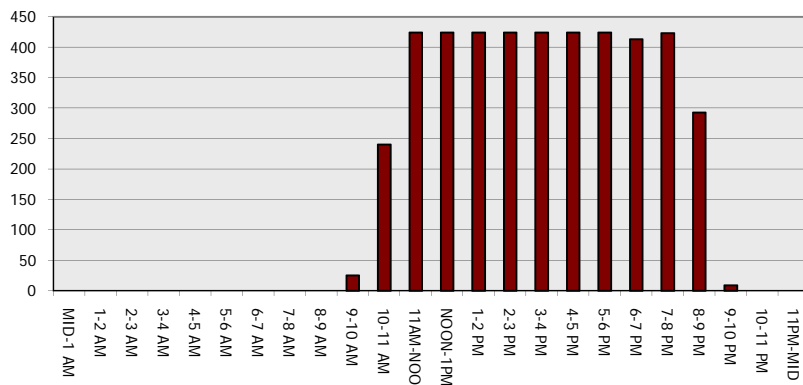
**Main Route - Traffic Demand (Vehicles Per Hour)**



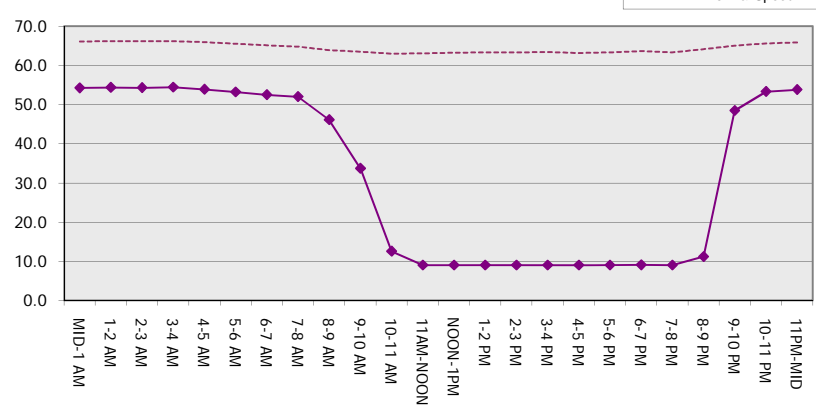
**Main Route Average Delay Per Vehicle (Minutes)**



**Main Route - Average Queue Length (Vehicles)**



**Main Route - Average Speed (MPH)**



<b>USH 41: CTH M TO IH 43 (BROWN COUNTY)                  CONTINUOUS (24 HOUR) CLOSURE                  NO DIVERSION ROUTE (MAX QUEUE METHOD)</b>	<b>OCTOBER</b>
	Analyzed for 2009 Construction Season

**SUMMARY OF TRAFFIC MODEL OUTPUT**

SATURDAY NORTHBOUND DIRECTION

TIME OF DAY	FLOWS AND CAPACITY IN VEH/HR						AVERAGE SPEEDS IN MPH			
	MAIN ROUTE		SITE CAPA CITY	FLOW		AV.DEL PER VEH (MINS)	AVERAGE QUEUE (VEH)	MAIN ROUTE		SITE
	DEMAND FLOW	PCT HEAVY		MAIN ROUTE	'DIVER TED'			WITHOUT WORK ZONE	WITH WORK ZONE	
MID-1 AM	313	0.0	1500	313	0	0.45	0	65.8	53.7	44.2
1-2 AM	174	0.0	1500	174	0	0.44	0	66.1	54.2	44.8
2-3 AM	168	0.0	1500	168	0	0.44	0	66.1	54.2	44.8
3-4 AM	134	0.0	1500	134	0	0.44	0	66.1	54.3	45.0
4-5 AM	219	0.0	1500	219	0	0.44	0	66.0	54.0	44.6
5-6 AM	346	0.0	1500	346	0	0.46	0	65.8	53.6	44.1
6-7 AM	579	0.0	1500	579	0	0.48	0	65.3	52.8	43.2
7-8 AM	776	0.0	1500	776	0	0.50	0	65.0	52.2	42.5
8-9 AM	1222	0.0	1499	1222	0	0.66	0	64.1	48.6	38.0
9-10 AM	1618	0.0	1499	1618	0	2.28	41	63.3	30.2	30.8
10-11 AM	1786	0.0	1500	1786	0	9.88	252	63.0	11.9	30.8
11AM-NOON	1874	0.0	1499	1503	371	16.74+	424	62.9	9.0	30.8
NOON-1PM	1878	0.0	1500	1503	376	16.74+	424	62.9	9.0	30.8
1-2 PM	1865	0.0	1500	1502	362	16.74+	424	62.9	9.0	30.8
2-3 PM	1895	0.0	1500	1502	393	16.74+	424	62.8	9.0	30.8
3-4 PM	1860	0.0	1500	1502	359	16.74+	424	62.9	9.0	30.8
4-5 PM	1944	0.0	1500	1501	443	16.74+	424	62.8	9.0	30.8
5-6 PM	1686	0.0	1500	1501	185	16.74+	424	63.2	9.0	30.8
6-7 PM	1549	0.0	1500	1487	61	16.51+	417	63.5	9.1	30.8
7-8 PM	1087	0.0	1499	1087	0	7.01	219	64.3	15.6	34.9
8-9 PM	898	0.0	1500	898	0	0.51	0	64.7	51.8	42.0
9-10 PM	776	0.0	1500	776	0	0.50	0	65.0	52.2	42.5
10-11 PM	636	0.0	1500	636	0	0.48	0	65.2	52.6	43.0
11PM-MID	450	0.0	1500	450	0	0.47	0	65.6	53.2	43.7

+ INDICATES QUEUEING EXCEEDS USER-SPECIFIED MAXIMUM LIMIT

*----- SITE BREAKDOWN DELAYS -----*	
BREAKDOWN DURATION (MINS)	0
RANGE OF QUEUE DELAY - MIN (VEH-H) MAX	0.0
AV BREAKDOWNS PER DAY	0.00
AV QUEUE DELAY/DAY (VEH-H)	0.0
AV TOTAL DELAY/DAY (VEH-H)	0.0

*----- SITE ACCIDENT DELAYS -----*	
BREAKDOWN DURATION (MINS)	0
RANGE OF QUEUE DELAY - MIN (VEH-H) MAX	0
AV BREAKDOWNS PER DAY	0
AV QUEUE DELAY/DAY (VEH-H)	0
AV TOTAL DELAY/DAY (VEH-H)	0

AVERAGE ACCIDENT NUMBERS (PIA/DAY)	
MAIN ROUTE WITHOUT WORKS	0.0090
MAIN ROUTE WITH WORKS	0.0066
'DIVERSION'	0.0021

PIA: Personal Injury Accidents

ECONOMIC IMPACT ON ROAD USERS	
ROAD USER COSTS PER DAY	\$77,230
CONGESTED HOURS PER DAY*	8

\*Delays Exceeding User-Specified Maximum

**USH 41: CTH M TO IH 43 (BROWN COUNTY)  
CONTINUOUS (24 HOUR) CLOSURE  
NO DIVERSION ROUTE (MAX QUEUE METHOD)**

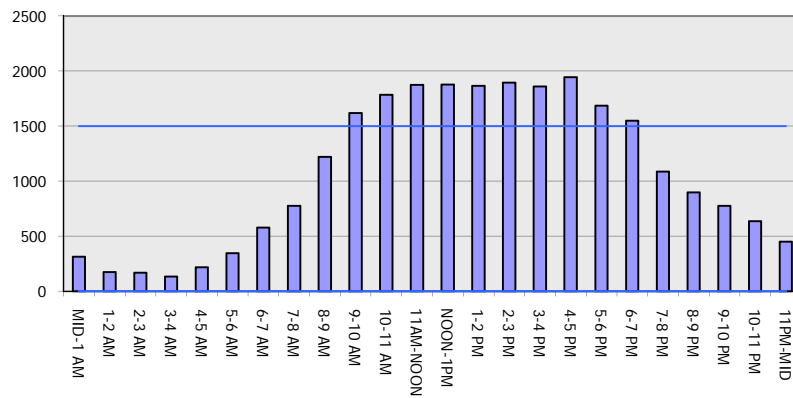
**OCTOBER**

Analyzed for 2009  
Construction Season

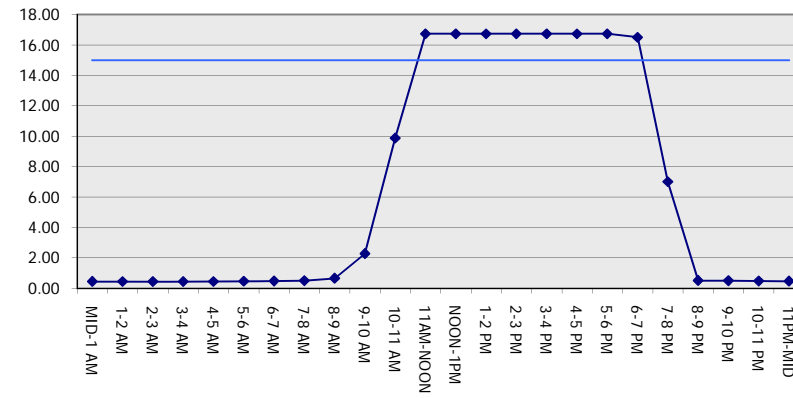
**GRAPHICAL REPRESENTATION OF TRAFFIC MODEL INPUT AND OUTPUT**

**SATURDAY NORTHBOUND DIRECTION**

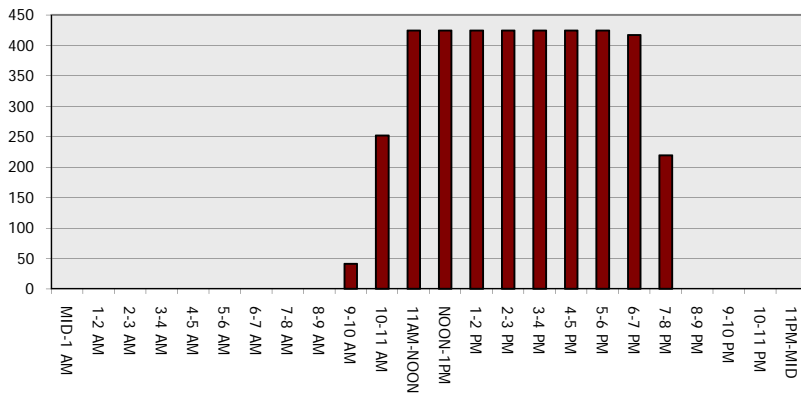
**Main Route - Traffic Demand (Vehicles Per Hour)**



**Main Route Average Delay Per Vehicle (Minutes)**



**Main Route - Average Queue Length (Vehicles)**



**Main Route - Average Speed (MPH)**

