

<b>USH 41: CTH AAA TO CTH G (BROWN COUNTY)                  CONTINUOUS (24 HOUR) CLOSURE                  NO DIVERSION ROUTE (MAX QUEUE METHOD)</b>	<b>OCTOBER</b>
	Analyzed for 2009 Construction Season

**SUMMARY OF TRAFFIC MODEL OUTPUT**

MON-THUR                  SOUTHBOUND DIRECTION

TIME OF DAY	FLOWS AND CAPACITY IN VEH/HR							AVERAGE SPEEDS IN MPH			
	MAIN ROUTE		SITE CAPA CITY	FLOW		AV.DEL PER VEH (MINS)	AVERAGE QUEUE (VEH)	MAIN ROUTE		SITE	
	DEMAND FLOW	PCT HEAVY		MAIN ROUTE	'DIVER TED'			WITHOUT WORK ZONE	WITH WORK ZONE		
MID-1 AM	330	0.0	1500	330	0	0.45	0	65.8	47.5	44.2	
1-2 AM	168	0.0	1500	168	0	0.44	0	66.1	48.1	44.8	
2-3 AM	147	0.0	1500	147	0	0.44	0	66.1	48.3	44.9	
3-4 AM	185	0.0	1500	185	0	0.44	0	66.0	48.1	44.8	
4-5 AM	454	0.0	1500	454	0	0.47	0	65.5	47.1	43.7	
5-6 AM	1360	0.0	1499	1360	0	1.09	16	63.8	33.7	36.1	
6-7 AM	2624	0.0	1500	1898	725	14.01+	372	59.6	8.5	30.8	
7-8 AM	3381	0.0	1499	1500	1881	17.93+	470	51.9	7.5	30.8	
8-9 AM	2085	0.0	1500	1495	590	17.40+	442	62.5	7.6	30.8	
9-10 AM	1745	0.0	1499	1496	249	17.37+	441	63.2	7.7	30.8	
10-11 AM	1740	0.0	1499	1497	243	17.37+	441	63.2	7.7	30.8	
11AM-NOON	1876	0.0	1499	1498	378	17.38+	442	62.9	7.6	30.8	
NOON-1PM	2030	0.0	1499	1498	532	17.40+	442	62.6	7.6	30.8	
1-2 PM	2116	0.0	1499	1499	618	17.40+	443	62.5	7.6	30.8	
2-3 PM	2300	0.0	1499	1499	801	17.42+	443	62.1	7.6	30.8	
3-4 PM	2736	0.0	1499	1509	1228	17.51+	450	58.5	7.6	30.8	
4-5 PM	3292	0.0	1499	1500	1792	17.98+	470	52.8	7.5	30.8	
5-6 PM	2968	0.0	1500	1499	1468	17.78+	460	56.1	7.6	30.8	
6-7 PM	1696	0.0	1500	1470	226	17.27+	438	63.2	7.7	30.8	
7-8 PM	1195	0.0	1499	1195	0	11.30+	292	64.1	9.4	32.2	
8-9 PM	1020	0.0	1500	1020	0	0.81	15	64.5	38.8	41.3	
9-10 PM	947	0.0	1500	947	0	0.51	0	64.6	45.3	41.9	
10-11 PM	585	0.0	1500	585	0	0.48	0	65.3	46.6	43.2	
11PM-MID	376	0.0	1500	376	0	0.46	0	65.7	47.4	44.0	

+ INDICATES QUEUEING EXCEEDS USER-SPECIFIED MAXIMUM LIMIT

*----- SITE BREAKDOWN DELAYS -----*	
BREAKDOWN DURATION (MINS)	0
RANGE OF QUEUE DELAY - MIN	0.0
(VEH-H) MAX	0.0
AV BREAKDOWNS PER DAY	0.00
AV QUEUE DELAY/DAY (VEH-H)	0.0
AV TOTAL DELAY/DAY (VEH-H)	0.0

*----- SITE ACCIDENT DELAYS -----*	
BREAKDOWN DURATION (MINS)	0
RANGE OF QUEUE DELAY - MIN	0
(VEH-H) MAX	0
AV BREAKDOWNS PER DAY	0
AV QUEUE DELAY/DAY (VEH-H)	0
AV TOTAL DELAY/DAY (VEH-H)	0

AVERAGE ACCIDENT NUMBERS (PIA/DAY)	
MAIN ROUTE WITHOUT WORKS	0.0077
MAIN ROUTE WITH WORKS	0.0037
'DIVERSION'	0.0051
<small>PIA: Personal Injury Accidents</small>	
IMPACTS ON ROAD USERS	
ROAD USER COSTS PER DAY	\$118,985
CONGESTED HOURS PER DAY*	14

\*Delays Exceeding User-Specified Maximum

**USH 41: CTH AAA TO CTH G (BROWN COUNTY)  
CONTINUOUS (24 HOUR) CLOSURE  
NO DIVERSION ROUTE (MAX QUEUE METHOD)**

**OCTOBER**

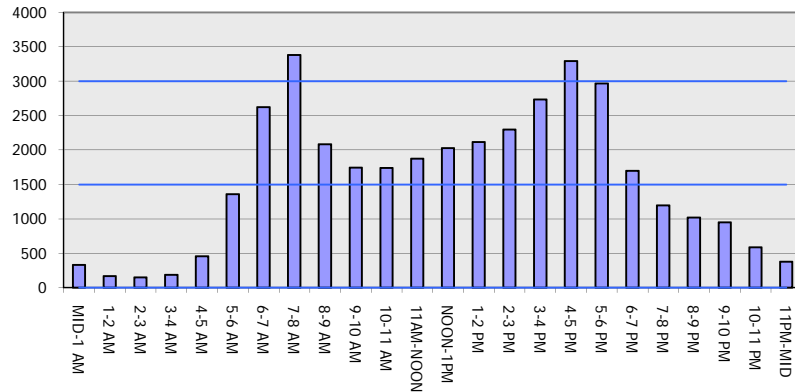
Analyzed for 2009  
Construction Season

**GRAPHICAL REPRESENTATION OF TRAFFIC MODEL INPUT AND OUTPUT**

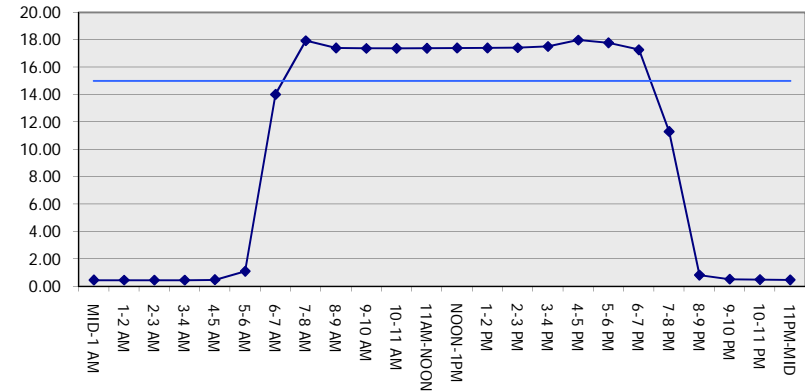
**MON-THUR**

**SOUTHBOUND DIRECTION**

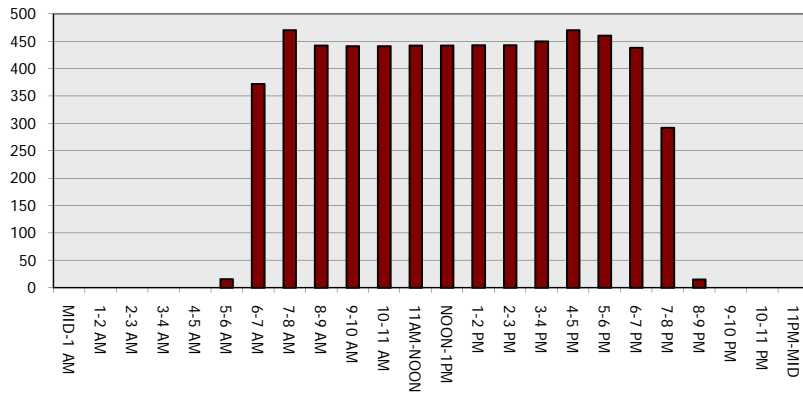
**Main Route - Traffic Demand (Vehicles Per Hour)**



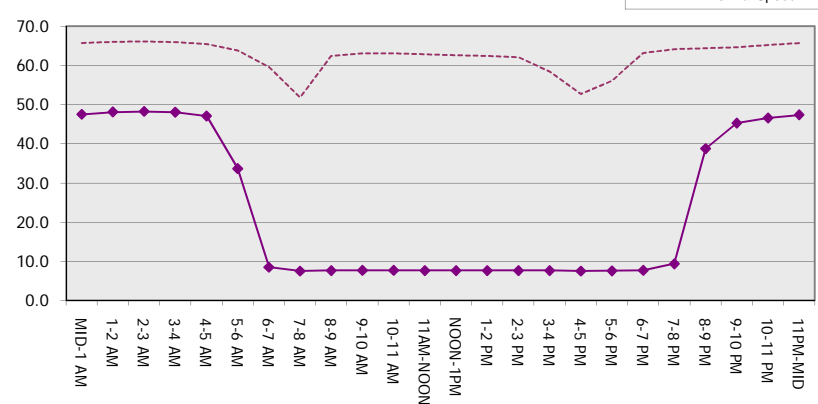
**Main Route Average Delay Per Vehicle (Minutes)**



**Main Route - Average Queue Length (Vehicles)**



**Main Route - Average Speed (MPH)**



<b>USH 41: CTH AAA TO CTH G (BROWN COUNTY)                  CONTINUOUS (24 HOUR) CLOSURE                  NO DIVERSION ROUTE (MAX QUEUE METHOD)</b>	<b>OCTOBER</b>
	Analyzed for 2009 Construction Season

**SUMMARY OF TRAFFIC MODEL OUTPUT**

MON-THUR                      NORTHBOUND DIRECTION

TIME OF DAY	FLOWS AND CAPACITY IN VEH/HR							AVERAGE SPEEDS IN MPH		
	MAIN ROUTE		SITE CAPA CITY	FLOW		AV.DEL PER VEH (MINS)	AVERAGE QUEUE (VEH)	MAIN ROUTE		SITE
	DEMAND FLOW	PCT HEAVY		MAIN ROUTE	'DIVER TED'			WITHOUT WORK ZONE	WITH WORK ZONE	
MID-1 AM	198	0.0	1500	198	0	0.44	0	66.0	48.0	44.7
1-2 AM	123	0.0	1500	123	0	0.43	0	66.1	48.3	45.0
2-3 AM	140	0.0	1500	140	0	0.44	0	66.1	48.3	44.9
3-4 AM	153	0.0	1500	153	0	0.44	0	66.1	48.2	44.9
4-5 AM	314	0.0	1500	314	0	0.45	0	65.8	47.6	44.2
5-6 AM	856	0.0	1500	856	0	0.51	0	64.8	45.6	42.2
6-7 AM	2111	0.0	1499	2111	0	7.08+	223	62.5	12.5	30.8
7-8 AM	3480	0.0	1500	1391	2089	17.62+	465	50.9	7.6	31.5
8-9 AM	2436	0.0	1499	1467	969	17.57+	448	61.5	7.6	30.8
9-10 AM	1853	0.0	1499	1493	359	17.38+	441	62.9	7.7	30.8
10-11 AM	1769	0.0	1499	1495	275	17.38+	441	63.1	7.7	30.8
11AM-NOON	1916	0.0	1499	1496	419	17.39+	442	62.8	7.6	30.8
NOON-1PM	1952	0.0	1499	1497	455	17.39+	442	62.7	7.6	30.8
1-2 PM	1936	0.0	1499	1498	438	17.39+	442	62.8	7.6	30.8
2-3 PM	2287	0.0	1499	1499	788	17.42+	443	62.1	7.6	30.8
3-4 PM	2843	0.0	1499	1513	1330	17.63+	455	57.4	7.6	30.8
4-5 PM	3538	0.0	1499	1500	2038	17.83+	470	50.2	7.5	30.8
5-6 PM	3167	0.0	1500	1500	1666	17.87+	466	54.1	7.5	30.8
6-7 PM	1878	0.0	1500	1488	390	17.36+	441	62.9	7.7	30.8
7-8 PM	1185	0.0	1499	1185	0	12.40+	322	64.1	9.0	32.4
8-9 PM	894	0.0	1500	894	0	0.78	16	64.7	39.4	42.0
9-10 PM	766	0.0	1500	766	0	0.50	0	65.0	46.0	42.5
10-11 PM	548	0.0	1500	548	0	0.48	0	65.4	46.7	43.3
11PM-MID	343	0.0	1500	343	0	0.46	0	65.8	47.5	44.1

+ INDICATES QUEUEING EXCEEDS USER-SPECIFIED MAXIMUM LIMIT

*----- SITE BREAKDOWN DELAYS -----*	
BREAKDOWN DURATION (MINS)	0
RANGE OF QUEUE DELAY - MIN (VEH-H) MAX	0.0
AV BREAKDOWNS PER DAY	0.00
AV QUEUE DELAY/DAY (VEH-H)	0.0
AV TOTAL DELAY/DAY (VEH-H)	0.0

*----- SITE ACCIDENT DELAYS -----*	
BREAKDOWN DURATION (MINS)	0
RANGE OF QUEUE DELAY - MIN (VEH-H) MAX	0
AV BREAKDOWNS PER DAY	0
AV QUEUE DELAY/DAY (VEH-H)	0
AV TOTAL DELAY/DAY (VEH-H)	0

AVERAGE ACCIDENT NUMBERS (PIA/DAY)	
MAIN ROUTE WITHOUT WORKS	0.0076
MAIN ROUTE WITH WORKS	0.0036
'DIVERSION'	0.0054

PIA: Personal Injury Accidents

ECONOMIC IMPACT ON ROAD USERS	
ROAD USER COSTS PER DAY	\$118,272
CONGESTED HOURS PER DAY*	14

\*Delays Exceeding User-Specified Maximum

**USH 41: CTH AAA TO CTH G (BROWN COUNTY)  
CONTINUOUS (24 HOUR) CLOSURE  
NO DIVERSION ROUTE (MAX QUEUE METHOD)**

**OCTOBER**

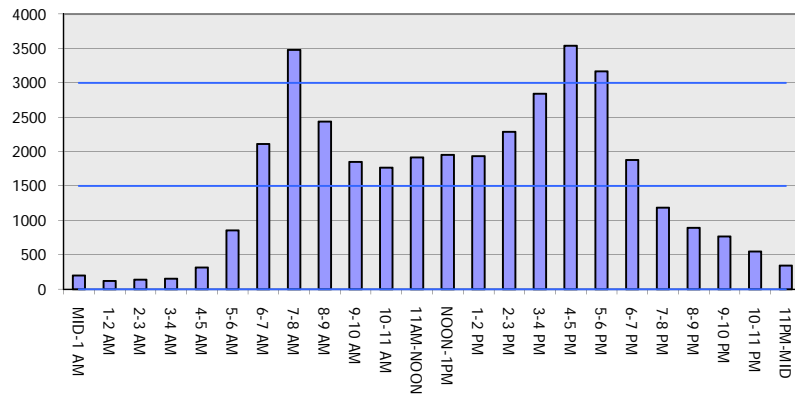
Analyzed for 2009  
Construction Season

**GRAPHICAL REPRESENTATION OF TRAFFIC MODEL INPUT AND OUTPUT**

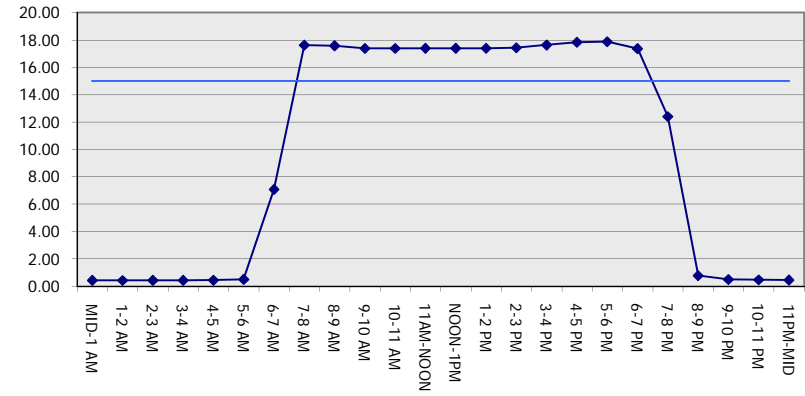
**MON-THUR**

**NORTHBOUND DIRECTION**

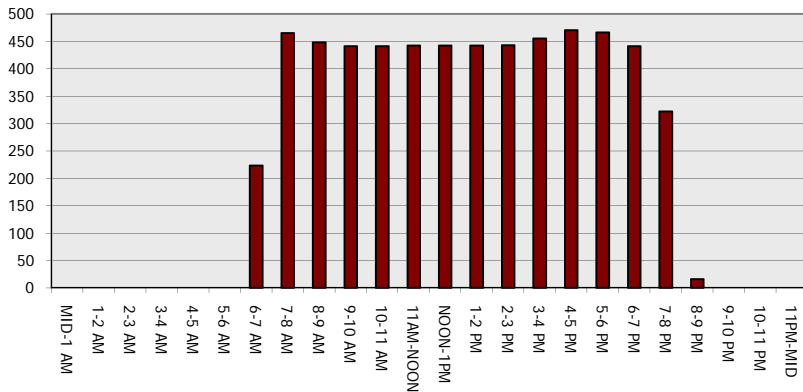
**Main Route - Traffic Demand (Vehicles Per Hour)**



**Main Route Average Delay Per Vehicle (Minutes)**



**Main Route - Average Queue Length (Vehicles)**



**Main Route - Average Speed (MPH)**

