

USH 41: STH 55 TO CTH F (BROWN COUNTY) CONTINUOUS (24 HOUR) CLOSURE NO DIVERSION ROUTE (MAX QUEUE METHOD)	OCTOBER
	Analyzed for 2009 Construction Season

SUMMARY OF TRAFFIC MODEL OUTPUT

SUNDAY SOUTHBOUND DIRECTION

TIME OF DAY	FLOWS AND CAPACITY IN VEH/HR						AVERAGE SPEEDS IN MPH			
	MAIN ROUTE		SITE CAPA CITY	FLOW		AV.DEL PER VEH (MINS)	AVERAGE QUEUE (VEH)	MAIN ROUTE		SITE
	DEMAND FLOW	PCT HEAVY		MAIN ROUTE	'DIVER TED'			WITHOUT WORK ZONE	WITH WORK ZONE	
MID-1 AM	339	0.0	1500	339	0	0.46	0	65.8	63.2	44.2
1-2 AM	196	0.0	1500	196	0	0.44	0	66.0	63.5	44.7
2-3 AM	186	0.0	1500	186	0	0.44	0	66.0	63.5	44.7
3-4 AM	131	0.0	1500	131	0	0.44	0	66.1	63.7	45.0
4-5 AM	110	0.0	1500	110	0	0.43	0	66.2	63.7	45.0
5-6 AM	147	0.0	1500	147	0	0.44	0	66.1	63.7	44.9
6-7 AM	224	0.0	1500	224	0	0.44	0	66.0	63.5	44.6
7-8 AM	304	0.0	1500	304	0	0.45	0	65.8	63.3	44.3
8-9 AM	496	0.0	1500	496	0	0.47	0	65.5	62.8	43.5
9-10 AM	815	0.0	1500	815	0	0.50	0	64.9	62.2	42.4
10-11 AM	1176	0.0	1500	1176	0	0.61	0	64.2	61.0	39.2
11AM-NOON	1406	0.0	1499	1406	0	0.90	0	63.8	59.2	32.9
NOON-1PM	1500	0.0	1499	1500	0	1.10	2	63.6	58.1	31.0
1-2 PM	1561	0.0	1500	1561	0	2.28	34	63.5	53.2	30.8
2-3 PM	1658	0.0	1500	1658	0	5.84	134	63.3	42.3	30.8
3-4 PM	2033	0.0	1500	1693	340	14.52+	371	62.6	28.2	30.9
4-5 PM	1897	0.0	1499	1500	397	15.71+	399	62.8	27.0	30.8
5-6 PM	1716	0.0	1500	1485	231	15.72+	398	63.2	27.1	30.8
6-7 PM	1203	0.0	1499	1203	0	11.04+	284	64.1	32.9	32.4
7-8 PM	890	0.0	1500	890	0	0.87	11	64.7	60.2	42.0
8-9 PM	653	0.0	1500	653	0	0.49	0	65.1	62.5	42.9
9-10 PM	460	0.0	1500	460	0	0.47	0	65.5	62.9	43.7
10-11 PM	502	0.0	1500	502	0	0.47	0	65.5	62.8	43.5
11PM-MID	1056	0.0	1500	1056	0	0.52	0	64.4	61.6	41.5

+ INDICATES QUEUEING EXCEEDS USER-SPECIFIED MAXIMUM LIMIT

----- SITE BREAKDOWN DELAYS -----	
BREAKDOWN DURATION (MINS)	0
RANGE OF QUEUE DELAY - MIN (VEH-H) MAX	0.0
AV BREAKDOWNS PER DAY	0.00
AV QUEUE DELAY/DAY (VEH-H)	0.0
AV TOTAL DELAY/DAY (VEH-H)	0.0

----- SITE ACCIDENT DELAYS -----	
BREAKDOWN DURATION (MINS)	0
RANGE OF QUEUE DELAY - MIN (VEH-H) MAX	0
AV BREAKDOWNS PER DAY	0
AV QUEUE DELAY/DAY (VEH-H)	0
AV TOTAL DELAY/DAY (VEH-H)	0

AVERAGE ACCIDENT NUMBERS (PIA/DAY)	
MAIN ROUTE WITHOUT WORKS	0.0408
MAIN ROUTE WITH WORKS	0.0376
'DIVERSION'	0.0044
PIA: Personal Injury Accidents	
IMPACTS ON ROAD USERS	
ROAD USER COSTS PER DAY	\$32,997
CONGESTED HOURS PER DAY*	4

*Delays Exceeding User-Specified Maximum

**USH 41: STH 55 TO CTH F (BROWN COUNTY)
CONTINUOUS (24 HOUR) CLOSURE
NO DIVERSION ROUTE (MAX QUEUE METHOD)**

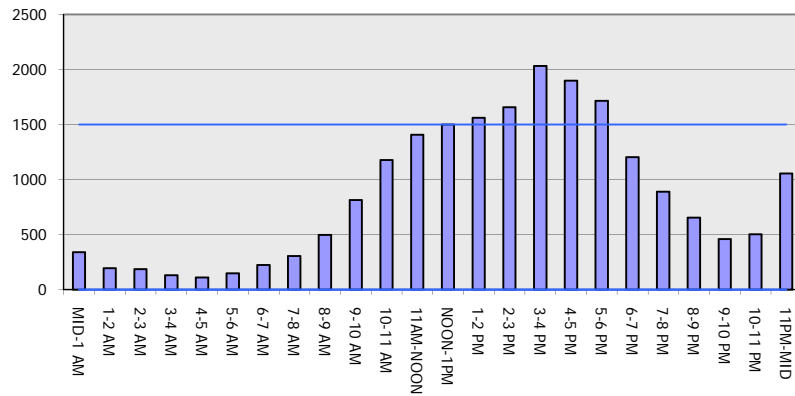
OCTOBER

Analyzed for 2009
Construction Season

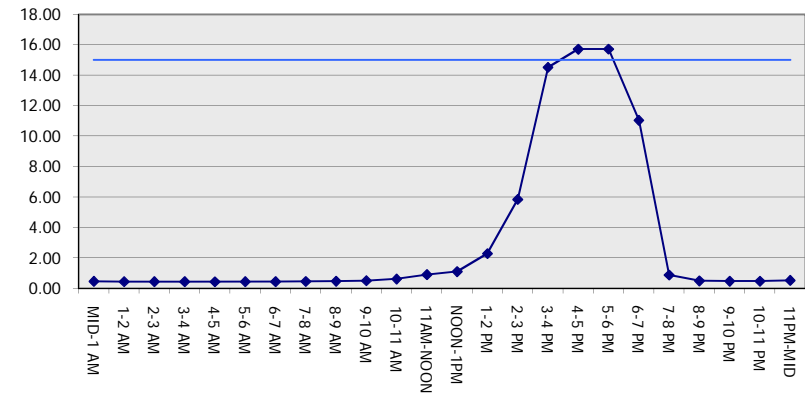
GRAPHICAL REPRESENTATION OF TRAFFIC MODEL INPUT AND OUTPUT

SUNDAY SOUTHBOUND DIRECTION

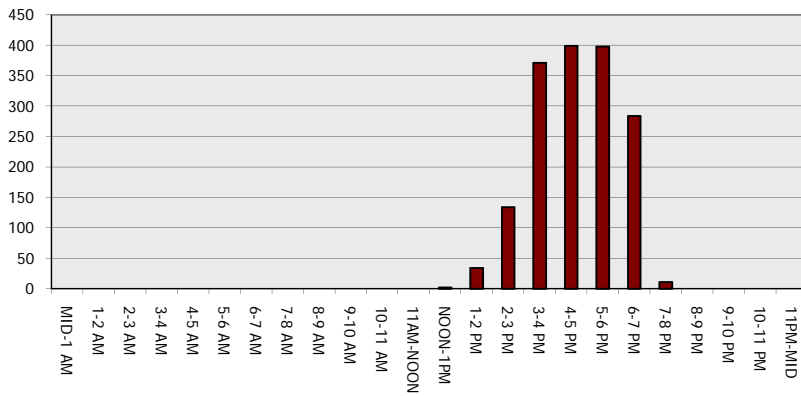
Main Route - Traffic Demand (Vehicles Per Hour)



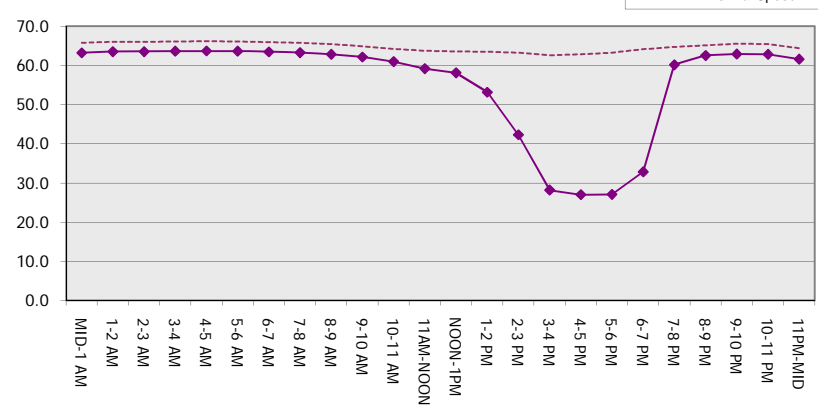
Main Route Average Delay Per Vehicle (Minutes)



Main Route - Average Queue Length (Vehicles)



Main Route - Average Speed (MPH)



USH 41: STH 55 TO CTH F (BROWN COUNTY) CONTINUOUS (24 HOUR) CLOSURE NO DIVERSION ROUTE (MAX QUEUE METHOD)	OCTOBER
	Analyzed for 2009 Construction Season

SUMMARY OF TRAFFIC MODEL OUTPUT

SUNDAY NORTHBOUND DIRECTION

TIME OF DAY	FLOWS AND CAPACITY IN VEH/HR						AVERAGE SPEEDS IN MPH			
	MAIN ROUTE		SITE CAPA CITY	FLOW		AV.DEL PER VEH (MINS)	AVERAGE QUEUE (VEH)	MAIN ROUTE		SITE
	DEMAND FLOW	PCT HEAVY		MAIN ROUTE	'DIVER TED'			WITHOUT WORK ZONE	WITH WORK ZONE	
MID-1 AM	218	0.0	1500	218	0	0.44	0	66.0	63.5	44.6
1-2 AM	149	0.0	1500	149	0	0.44	0	66.1	63.7	44.9
2-3 AM	179	0.0	1500	179	0	0.44	0	66.1	63.6	44.8
3-4 AM	90	0.0	1500	90	0	0.43	0	66.2	63.8	45.1
4-5 AM	101	0.0	1500	101	0	0.43	0	66.2	63.7	45.1
5-6 AM	175	0.0	1500	175	0	0.44	0	66.1	63.6	44.8
6-7 AM	252	0.0	1500	252	0	0.45	0	65.9	63.4	44.5
7-8 AM	485	0.0	1500	485	0	0.47	0	65.5	62.9	43.6
8-9 AM	1046	0.0	1499	1046	0	0.55	0	64.5	61.5	40.7
9-10 AM	1458	0.0	1499	1458	0	0.99	0	63.7	58.7	31.7
10-11 AM	1421	0.0	1500	1421	0	0.92	0	63.7	59.1	32.5
11AM-NOON	1126	0.0	1500	1126	0	0.54	0	64.3	61.4	41.0
NOON-1PM	1149	0.0	1500	1149	0	0.57	0	64.3	61.2	40.2
1-2 PM	1248	0.0	1499	1248	0	0.70	0	64.1	60.4	37.0
2-3 PM	1452	0.0	1499	1452	0	0.98	0	63.7	58.7	31.9
3-4 PM	1676	0.0	1500	1676	0	3.99	85	63.3	47.3	30.8
4-5 PM	1618	0.0	1499	1618	0	10.19	249	63.3	33.9	30.8
5-6 PM	1295	0.0	1499	1295	0	8.72	214	64.0	36.6	31.7
6-7 PM	967	0.0	1500	967	0	0.81	9	64.6	60.3	41.7
7-8 PM	748	0.0	1500	748	0	0.49	0	65.0	62.3	42.6
8-9 PM	536	0.0	1500	536	0	0.47	0	65.4	62.8	43.3
9-10 PM	382	0.0	1500	382	0	0.46	0	65.7	63.1	44.0
10-11 PM	237	0.0	1500	237	0	0.45	0	66.0	63.5	44.5
11PM-MID	163	0.0	1500	163	0	0.44	0	66.1	63.6	44.8

----- SITE BREAKDOWN DELAYS -----	
BREAKDOWN DURATION (MINS)	0
RANGE OF QUEUE DELAY - MIN (VEH-H) MAX	0.0
AV BREAKDOWNS PER DAY	0.00
AV QUEUE DELAY/DAY (VEH-H)	0.0
AV TOTAL DELAY/DAY (VEH-H)	0.0

----- SITE ACCIDENT DELAYS -----	
BREAKDOWN DURATION (MINS)	0
RANGE OF QUEUE DELAY - MIN (VEH-H) MAX	0
AV BREAKDOWNS PER DAY	0
AV QUEUE DELAY/DAY (VEH-H)	0
AV TOTAL DELAY/DAY (VEH-H)	0

AVERAGE ACCIDENT NUMBERS (PIA/DAY)	
MAIN ROUTE WITHOUT WORKS	0.0359
MAIN ROUTE WITH WORKS	0.0347
'DIVERSION'	0.0000

PIA: Personal Injury Accidents

ECONOMIC IMPACT ON ROAD USERS	
ROAD USER COSTS PER DAY	\$12,066
CONGESTED HOURS PER DAY*	0

*Delays Exceeding User-Specified Maximum

**USH 41: STH 55 TO CTH F (BROWN COUNTY)
CONTINUOUS (24 HOUR) CLOSURE
NO DIVERSION ROUTE (MAX QUEUE METHOD)**

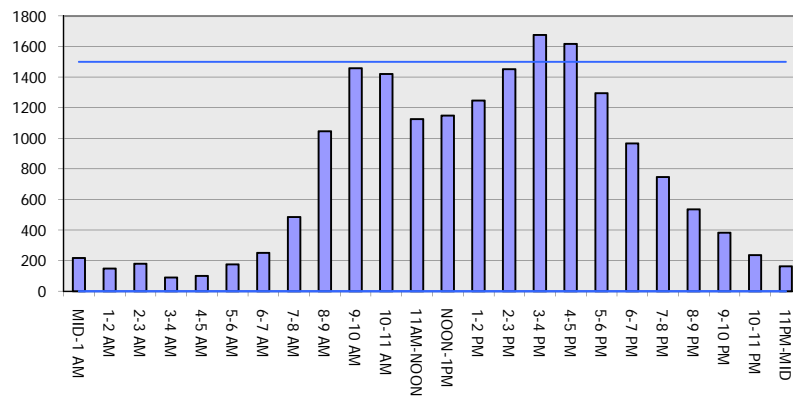
OCTOBER

Analyzed for 2009
Construction Season

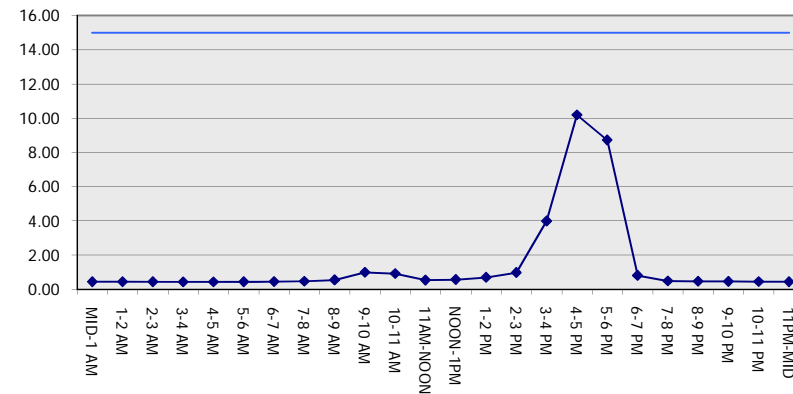
GRAPHICAL REPRESENTATION OF TRAFFIC MODEL INPUT AND OUTPUT

SUNDAY NORTHBOUND DIRECTION

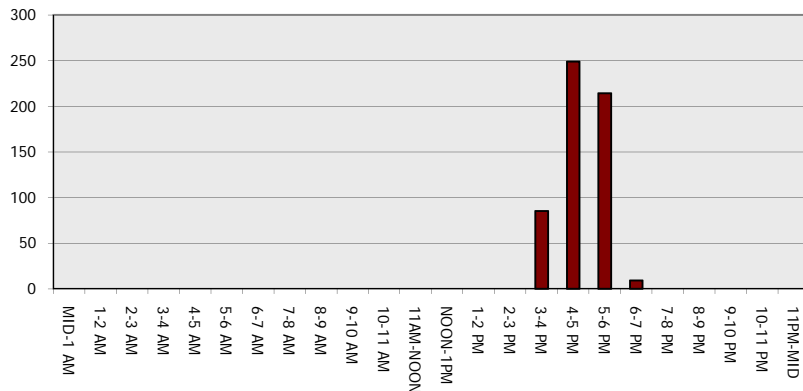
Main Route - Traffic Demand (Vehicles Per Hour)



Main Route Average Delay Per Vehicle (Minutes)



Main Route - Average Queue Length (Vehicles)



Main Route - Average Speed (MPH)

