

<b>USH 41: STH 55 TO CTH F (BROWN COUNTY)                  CONTINUOUS (24 HOUR) CLOSURE                  NO DIVERSION ROUTE (MAX QUEUE METHOD)</b>	<b>AUGUST</b>
	Analyzed for 2009 Construction Season

**SUMMARY OF TRAFFIC MODEL OUTPUT**

SUNDAY SOUTHBOUND DIRECTION

TIME OF DAY	FLOWS AND CAPACITY IN VEH/HR						AVERAGE SPEEDS IN MPH				
	MAIN ROUTE		SITE CAPA CITY	FLOW		AV.DEL PER VEH (MINS)	AVERAGE QUEUE (VEH)	MAIN ROUTE		SITE	
	DEMAND FLOW	PCT HEAVY		MAIN ROUTE	'DIVER TED'			WITHOUT WORK ZONE	WITH WORK ZONE		
MID-1 AM	450	0.0	1500	450	0	0.47	0	65.6	63.0	43.7	
1-2 AM	220	0.0	1500	220	0	0.44	0	66.0	63.5	44.6	
2-3 AM	165	0.0	1500	165	0	0.44	0	66.1	63.6	44.8	
3-4 AM	121	0.0	1500	121	0	0.43	0	66.1	63.7	45.0	
4-5 AM	124	0.0	1500	124	0	0.43	0	66.1	63.7	45.0	
5-6 AM	145	0.0	1500	145	0	0.44	0	66.1	63.7	44.9	
6-7 AM	224	0.0	1500	224	0	0.44	0	66.0	63.5	44.6	
7-8 AM	379	0.0	1500	379	0	0.46	0	65.7	63.1	44.0	
8-9 AM	605	0.0	1500	605	0	0.48	0	65.3	62.6	43.1	
9-10 AM	980	0.0	1500	980	0	0.52	0	64.6	61.8	41.7	
10-11 AM	1375	0.0	1499	1375	0	0.86	0	63.8	59.4	33.7	
11AM-NOON	1608	0.0	1499	1608	0	2.57	44	63.4	52.0	30.8	
NOON-1PM	1688	0.0	1500	1688	0	8.20	199	63.2	37.3	30.8	
1-2 PM	1691	0.0	1500	1599	92	14.74+	372	63.2	28.1	30.8	
2-3 PM	1629	0.0	1500	1500	129	15.81+	400	63.3	27.0	30.8	
3-4 PM	1707	0.0	1500	1500	207	15.78+	400	63.2	27.0	30.8	
4-5 PM	1643	0.0	1500	1500	143	15.80+	400	63.3	27.0	30.8	
5-6 PM	1373	0.0	1499	1373	0	13.80+	345	63.8	29.2	30.8	
6-7 PM	1195	0.0	1499	1195	0	5.12	131	64.1	44.5	34.3	
7-8 PM	930	0.0	1500	930	0	0.51	0	64.6	61.9	41.9	
8-9 PM	778	0.0	1500	778	0	0.50	0	65.0	62.2	42.5	
9-10 PM	531	0.0	1500	531	0	0.47	0	65.4	62.8	43.4	
10-11 PM	367	0.0	1500	367	0	0.46	0	65.7	63.2	44.0	
11PM-MID	237	0.0	1500	237	0	0.45	0	66.0	63.5	44.5	

+ INDICATES QUEUEING EXCEEDS USER-SPECIFIED MAXIMUM LIMIT

*----- SITE BREAKDOWN DELAYS -----*	
BREAKDOWN DURATION (MINS)	0
RANGE OF QUEUE DELAY - MIN (VEH-H) MAX	0.0
AV BREAKDOWNS PER DAY	0.00
AV QUEUE DELAY/DAY (VEH-H)	0.0
AV TOTAL DELAY/DAY (VEH-H)	0.0

*----- SITE ACCIDENT DELAYS -----*	
BREAKDOWN DURATION (MINS)	0
RANGE OF QUEUE DELAY - MIN (VEH-H) MAX	0
AV BREAKDOWNS PER DAY	0
AV QUEUE DELAY/DAY (VEH-H)	0
AV TOTAL DELAY/DAY (VEH-H)	0

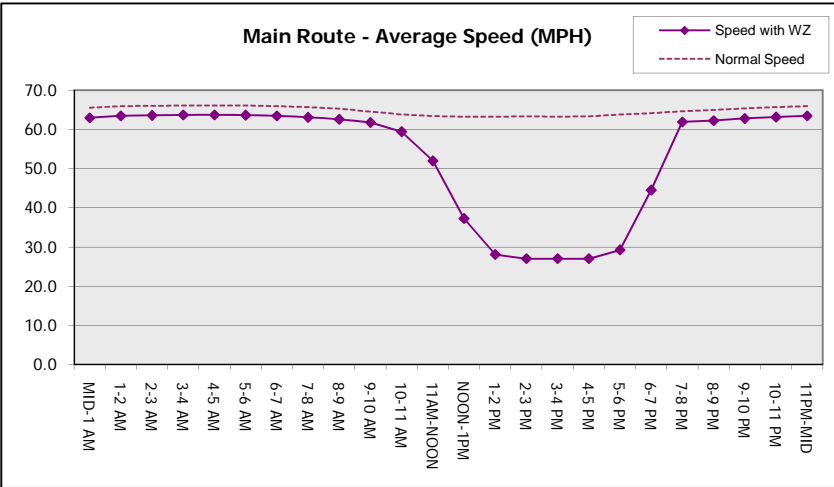
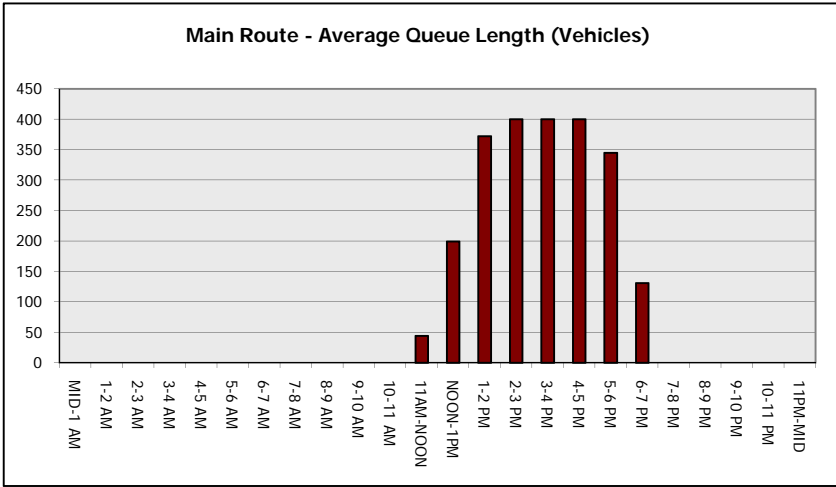
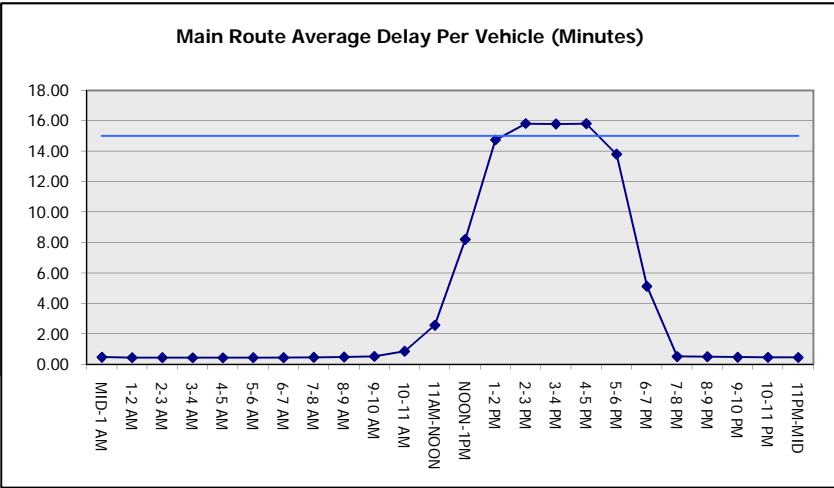
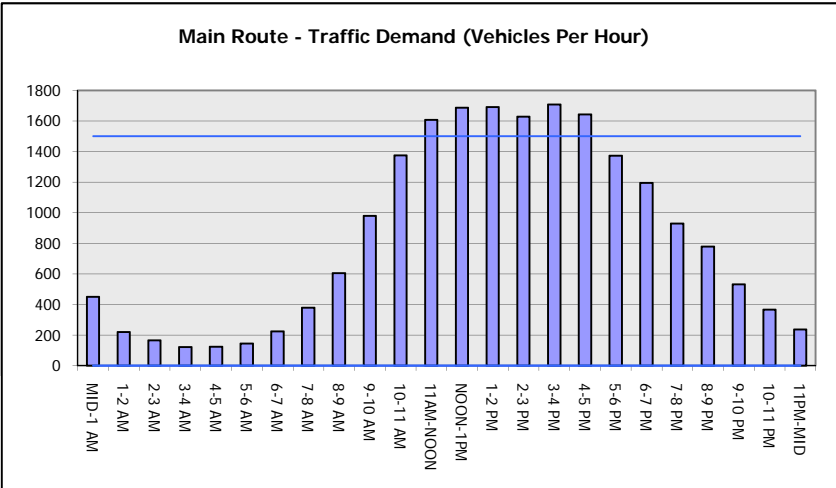
AVERAGE ACCIDENT NUMBERS (PIA/DAY)	
MAIN ROUTE WITHOUT WORKS	0.0398
MAIN ROUTE WITH WORKS	0.0374
'DIVERSION'	0.0026
PIA: Personal Injury Accidents	
IMPACTS ON ROAD USERS	
ROAD USER COSTS PER DAY	\$42,023
CONGESTED HOURS PER DAY*	5

\*Delays Exceeding User-Specified Maximum

**USH 41: STH 55 TO CTH F (BROWN COUNTY)  
CONTINUOUS (24 HOUR) CLOSURE  
NO DIVERSION ROUTE (MAX QUEUE METHOD)**

**AUGUST**  
Analyzed for 2009  
Construction Season

**GRAPHICAL REPRESENTATION OF TRAFFIC MODEL INPUT AND OUTPUT**  
**SUNDAY SOUTHBOUND DIRECTION**



<b>USH 41: STH 55 TO CTH F (BROWN COUNTY)                  CONTINUOUS (24 HOUR) CLOSURE                  NO DIVERSION ROUTE (MAX QUEUE METHOD)</b>	<b>AUGUST</b>
	Analyzed for 2009 Construction Season

**SUMMARY OF TRAFFIC MODEL OUTPUT**

SUNDAY NORTHBOUND DIRECTION

TIME OF DAY	FLOWS AND CAPACITY IN VEH/HR							AVERAGE SPEEDS IN MPH		
	MAIN ROUTE		SITE CAPA CITY	FLOW		AV.DEL PER VEH (MINS)	AVERAGE QUEUE (VEH)	MAIN ROUTE		SITE
	DEMAND FLOW	PCT HEAVY		MAIN ROUTE	'DIVER TED'			WITHOUT WORK ZONE	WITH WORK ZONE	
MID-1 AM	250	0.0	1500	250	0	0.45	0	65.9	63.4	44.5
1-2 AM	151	0.0	1500	151	0	0.44	0	66.1	63.7	44.9
2-3 AM	174	0.0	1500	174	0	0.44	0	66.1	63.6	44.8
3-4 AM	85	0.0	1500	85	0	0.43	0	66.2	63.8	45.1
4-5 AM	85	0.0	1500	85	0	0.43	0	66.2	63.8	45.1
5-6 AM	168	0.0	1500	168	0	0.44	0	66.1	63.6	44.8
6-7 AM	212	0.0	1500	212	0	0.44	0	66.0	63.5	44.6
7-8 AM	323	0.0	1500	323	0	0.45	0	65.8	63.2	44.2
8-9 AM	507	0.0	1500	507	0	0.47	0	65.5	62.8	43.5
9-10 AM	743	0.0	1500	743	0	0.49	0	65.0	62.3	42.6
10-11 AM	981	0.0	1500	981	0	0.52	0	64.6	61.8	41.7
11AM-NOON	1162	0.0	1500	1162	0	0.59	0	64.2	61.1	39.7
NOON-1PM	1237	0.0	1500	1237	0	0.68	0	64.1	60.5	37.3
1-2 PM	1278	0.0	1500	1278	0	0.74	0	64.0	60.2	36.1
2-3 PM	1236	0.0	1500	1236	0	0.68	0	64.1	60.5	37.3
3-4 PM	1281	0.0	1500	1281	0	0.74	0	64.0	60.2	36.0
4-5 PM	1294	0.0	1500	1294	0	0.76	0	64.0	60.1	35.6
5-6 PM	1153	0.0	1500	1153	0	0.58	0	64.2	61.2	40.0
6-7 PM	967	0.0	1500	967	0	0.52	0	64.6	61.8	41.8
7-8 PM	808	0.0	1500	808	0	0.50	0	64.9	62.2	42.4
8-9 PM	657	0.0	1500	657	0	0.49	0	65.1	62.5	42.9
9-10 PM	478	0.0	1500	478	0	0.47	0	65.5	62.9	43.6
10-11 PM	316	0.0	1500	316	0	0.45	0	65.8	63.3	44.2
11PM-MID	175	0.0	1500	175	0	0.44	0	66.1	63.6	44.8

*----- SITE BREAKDOWN DELAYS -----*	
BREAKDOWN DURATION (MINS)	0
RANGE OF QUEUE DELAY - MIN (VEH-H) MAX	0.0
AV BREAKDOWNS PER DAY	0.00
AV QUEUE DELAY/DAY (VEH-H)	0.0
AV TOTAL DELAY/DAY (VEH-H)	0.0

*----- SITE ACCIDENT DELAYS -----*	
BREAKDOWN DURATION (MINS)	0
RANGE OF QUEUE DELAY - MIN (VEH-H) MAX	0
AV BREAKDOWNS PER DAY	0
AV QUEUE DELAY/DAY (VEH-H)	0
AV TOTAL DELAY/DAY (VEH-H)	0

AVERAGE ACCIDENT NUMBERS (PIA/DAY)	
MAIN ROUTE WITHOUT WORKS	0.0310
MAIN ROUTE WITH WORKS	0.0300
'DIVERSION'	0.0000

PIA: Personal Injury Accidents

ECONOMIC IMPACT ON ROAD USERS	
ROAD USER COSTS PER DAY	\$2,602
CONGESTED HOURS PER DAY*	0

\*Delays Exceeding User-Specified Maximum

**USH 41: STH 55 TO CTH F (BROWN COUNTY)  
CONTINUOUS (24 HOUR) CLOSURE  
NO DIVERSION ROUTE (MAX QUEUE METHOD)**

**AUGUST**

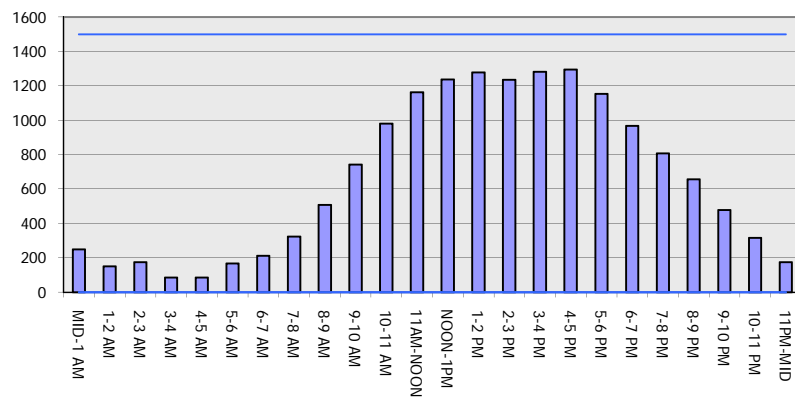
Analyzed for 2009  
Construction Season

**GRAPHICAL REPRESENTATION OF TRAFFIC MODEL INPUT AND OUTPUT**

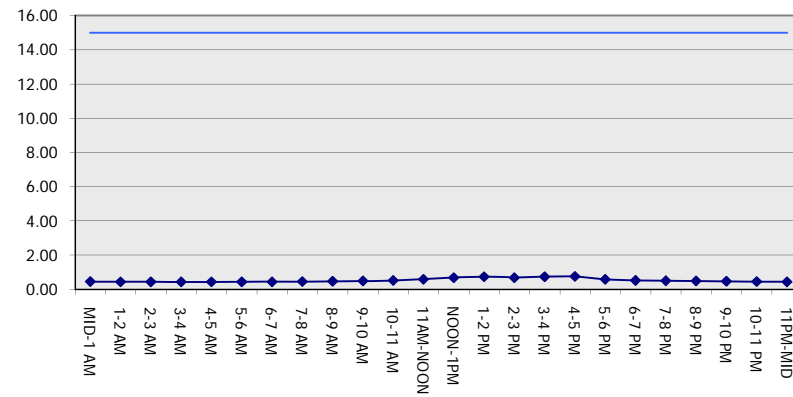
**SUNDAY**

**NORTHBOUND DIRECTION**

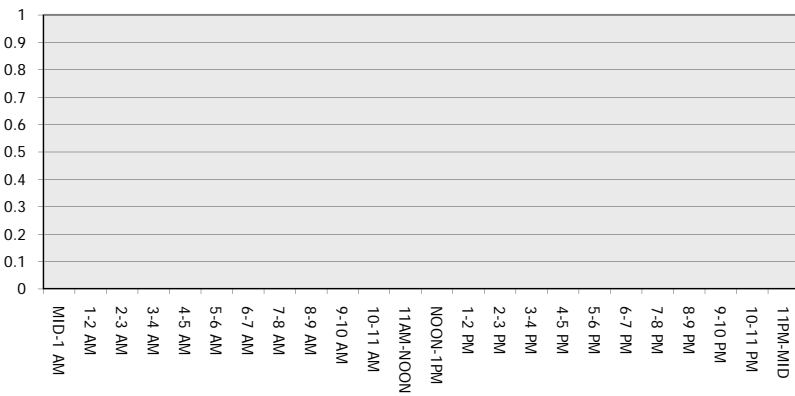
**Main Route - Traffic Demand (Vehicles Per Hour)**



**Main Route Average Delay Per Vehicle (Minutes)**



**Main Route - Average Queue Length (Vehicles)**



**Main Route - Average Speed (MPH)**

