

<b>USH 51: CTH U TO STH 29 W (MARATHON COUNTY)</b> <b>NIGHTTIME CLOSURE</b> <b>NO DIVERSION ROUTE (MAX QUEUE METHOD)</b>	<b>AUGUST</b>
	Analyzed for 2009 Construction Season

**SUMMARY OF TRAFFIC MODEL OUTPUT**

SUNDAY SOUTHBOUND DIRECTION

TIME OF DAY	FLOWS AND CAPACITY IN VEH/HR						AVERAGE SPEEDS IN MPH			
	MAIN ROUTE		SITE CAPA CITY	FLOW		AV.DEL PER VEH (MINS)	AVERAGE QUEUE (VEH)	MAIN ROUTE		SITE
	DEMAND FLOW	PCT HEAVY		MAIN ROUTE	'DIVER TED'			WITHOUT WORK ZONE	WITH WORK ZONE	
MID-1 AM	120	0.0	1500	120	0	0.43	0	66.1	52.8	45.0
1-2 AM	67	0.0	1500	67	0	0.43	0	66.3	53.0	45.2
2-3 AM	56	0.0	1500	56	0	0.43	0	66.3	53.1	45.3
3-4 AM	49	0.0	1500	49	0	0.43	0	66.3	53.1	45.3
4-5 AM	57	0.0	1500	57	0	0.43	0	66.3	53.1	45.3
5-6 AM	93	0.0	1500	93	0	0.43	0	66.2	53.0	45.1
6-7 AM	162	0.0	1500	162	0	0.44	0	66.1	52.7	44.8
7-8 AM	293	0.0	1500	293	0	0.45	0	65.8	52.2	44.3
8-9 AM	513	0.0	1500	513	0	0.47	0	65.5	51.5	43.5
9-10 AM	765	0.0	OFF	765	0	0.00	0	65.0	65.0	65.0
10-11 AM	1140	0.0	OFF	1140	0	0.00	0	64.3	64.3	64.3
11AM-NOON	1450	0.0	OFF	1450	0	0.00	0	63.7	63.7	63.7
NOON-1PM	1640	0.0	OFF	1640	0	0.00	0	63.3	63.3	63.3
1-2 PM	1741	0.0	OFF	1741	0	0.00	0	63.2	63.2	63.2
2-3 PM	1731	0.0	OFF	1731	0	0.00	0	63.2	63.2	63.2
3-4 PM	1653	0.0	OFF	1653	0	0.00	0	63.3	63.3	63.3
4-5 PM	1485	0.0	OFF	1485	0	0.00	0	63.6	63.6	63.6
5-6 PM	1231	0.0	OFF	1231	0	0.00	0	64.1	64.1	64.1
6-7 PM	980	0.0	OFF	980	0	0.00	0	64.6	64.6	64.6
7-8 PM	741	0.0	1500	741	0	0.49	0	65.0	50.7	42.6
8-9 PM	514	0.0	1500	514	0	0.47	0	65.5	51.5	43.5
9-10 PM	362	0.0	1500	362	0	0.46	0	65.7	52.0	44.0
10-11 PM	229	0.0	1500	229	0	0.44	0	66.0	52.5	44.6
11PM-MID	119	0.0	1500	119	0	0.43	0	66.1	52.8	45.0

"OFF" INDICATES NO ROAD WORK (ALL LANES OPEN TO TRAFFIC)

*----- SITE BREAKDOWN DELAYS -----*	
BREAKDOWN DURATION (MINS)	0
RANGE OF QUEUE DELAY - MIN (VEH-H) MAX	0.0
AV BREAKDOWNS PER DAY	0.00
AV QUEUE DELAY/DAY (VEH-H)	0.0
AV TOTAL DELAY/DAY (VEH-H)	0.0

*----- SITE ACCIDENT DELAYS -----*	
BREAKDOWN DURATION (MINS)	0
RANGE OF QUEUE DELAY - MIN (VEH-H) MAX	0
AV BREAKDOWNS PER DAY	0
AV QUEUE DELAY/DAY (VEH-H)	0
AV TOTAL DELAY/DAY (VEH-H)	0

AVERAGE ACCIDENT NUMBERS (PIA/DAY)	
MAIN ROUTE WITHOUT WORKS	0.0052
MAIN ROUTE WITH WORKS	0.0050
'DIVERSION'	0.0000
PIA: Personal Injury Accidents	
IMPACTS ON ROAD USERS	
ROAD USER COSTS PER DAY	\$367
CONGESTED HOURS PER DAY*	0

\*Delays Exceeding User-Specified Maximum

**USH 51: CTH U TO STH 29 W (MARATHON COUNTY)  
NIGHTTIME CLOSURE  
NO DIVERSION ROUTE (MAX QUEUE METHOD)**

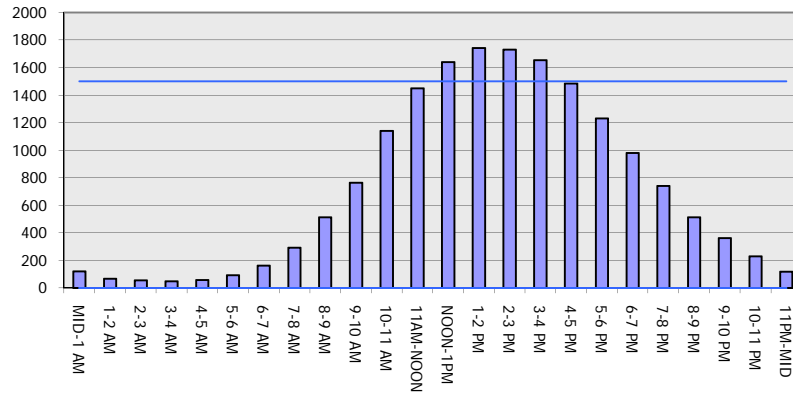
**AUGUST**

Analyzed for 2009  
Construction Season

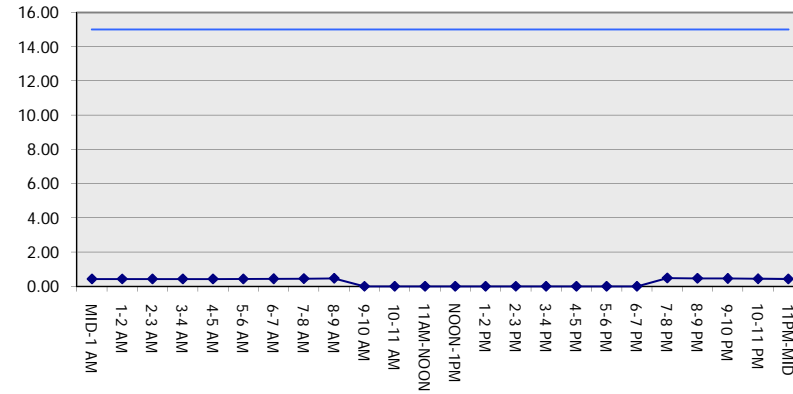
**GRAPHICAL REPRESENTATION OF TRAFFIC MODEL INPUT AND OUTPUT**

**SUNDAY SOUTHBOUND DIRECTION**

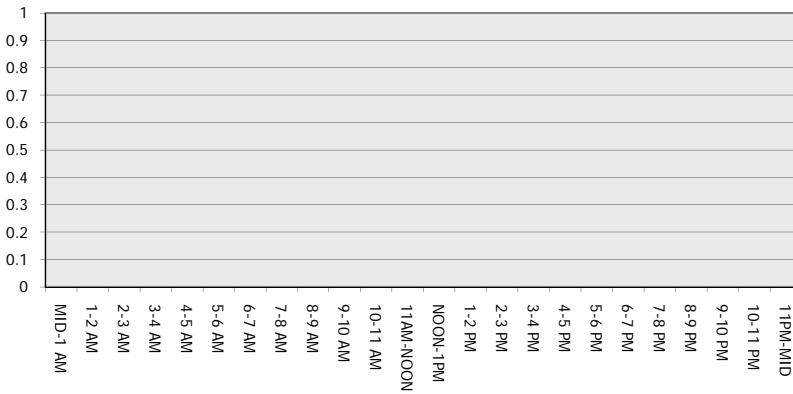
**Main Route - Traffic Demand (Vehicles Per Hour)**



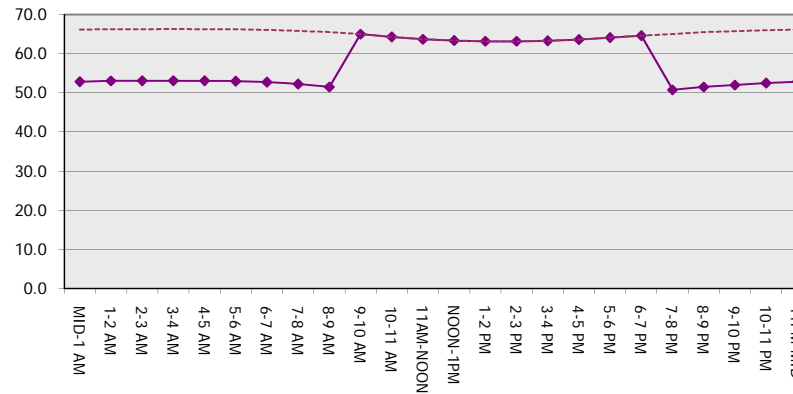
**Main Route Average Delay Per Vehicle (Minutes)**



**Main Route - Average Queue Length (Vehicles)**



**Main Route - Average Speed (MPH)**



<b>USH 51: CTH U TO STH 29 W (MARATHON COUNTY)</b> <b>NIGHTTIME CLOSURE</b> <b>NO DIVERSION ROUTE (MAX QUEUE METHOD)</b>	<b>AUGUST</b>
	Analyzed for 2009 Construction Season

**SUMMARY OF TRAFFIC MODEL OUTPUT**

SUNDAY NORTHBOUND DIRECTION

TIME OF DAY	FLOWS AND CAPACITY IN VEH/HR						AVERAGE SPEEDS IN MPH			
	MAIN ROUTE		SITE CAPA CITY	FLOW		AV.DEL PER VEH (MINS)	AVERAGE QUEUE (VEH)	MAIN ROUTE		SITE
	DEMAND FLOW	PCT HEAVY		MAIN ROUTE	'DIVER TED'			WITHOUT WORK ZONE	WITH WORK ZONE	
MID-1 AM	116	0.0	1500	116	0	0.43	0	66.2	52.8	45.0
1-2 AM	69	0.0	1500	69	0	0.43	0	66.3	53.0	45.2
2-3 AM	61	0.0	1500	61	0	0.43	0	66.3	53.0	45.3
3-4 AM	44	0.0	1500	44	0	0.43	0	66.3	53.1	45.3
4-5 AM	43	0.0	1500	43	0	0.43	0	66.3	53.1	45.3
5-6 AM	71	0.0	1500	71	0	0.43	0	66.3	53.0	45.2
6-7 AM	140	0.0	1500	140	0	0.44	0	66.1	52.8	44.9
7-8 AM	191	0.0	1500	191	0	0.44	0	66.0	52.6	44.7
8-9 AM	315	0.0	1500	315	0	0.45	0	65.8	52.2	44.2
9-10 AM	486	0.0	OFF	486	0	0.00	0	65.5	65.5	65.5
10-11 AM	672	0.0	OFF	672	0	0.00	0	65.1	65.1	65.1
11AM-NOON	865	0.0	OFF	865	0	0.00	0	64.8	64.8	64.8
NOON-1PM	977	0.0	OFF	977	0	0.00	0	64.6	64.6	64.6
1-2 PM	983	0.0	OFF	983	0	0.00	0	64.6	64.6	64.6
2-3 PM	1020	0.0	OFF	1020	0	0.00	0	64.5	64.5	64.5
3-4 PM	971	0.0	OFF	971	0	0.00	0	64.6	64.6	64.6
4-5 PM	877	0.0	OFF	877	0	0.00	0	64.8	64.8	64.8
5-6 PM	792	0.0	OFF	792	0	0.00	0	64.9	64.9	64.9
6-7 PM	689	0.0	OFF	689	0	0.00	0	65.1	65.1	65.1
7-8 PM	554	0.0	1500	554	0	0.48	0	65.3	51.4	43.3
8-9 PM	446	0.0	1500	446	0	0.47	0	65.6	51.7	43.7
9-10 PM	336	0.0	1500	336	0	0.46	0	65.8	52.1	44.2
10-11 PM	237	0.0	1500	237	0	0.45	0	66.0	52.4	44.5
11PM-MID	143	0.0	1500	143	0	0.44	0	66.1	52.8	44.9

"OFF" INDICATES NO ROAD WORK (ALL LANES OPEN TO TRAFFIC)

*----- SITE BREAKDOWN DELAYS -----*	
BREAKDOWN DURATION (MINS)	0
RANGE OF QUEUE DELAY - MIN (VEH-H) MAX	0.0
AV BREAKDOWNS PER DAY	0.00
AV QUEUE DELAY/DAY (VEH-H)	0.0
AV TOTAL DELAY/DAY (VEH-H)	0.0

*----- SITE ACCIDENT DELAYS -----*	
BREAKDOWN DURATION (MINS)	0
RANGE OF QUEUE DELAY - MIN (VEH-H) MAX	0
AV BREAKDOWNS PER DAY	0
AV QUEUE DELAY/DAY (VEH-H)	0
AV TOTAL DELAY/DAY (VEH-H)	0

AVERAGE ACCIDENT NUMBERS (PIA/DAY)	
MAIN ROUTE WITHOUT WORKS	0.0034
MAIN ROUTE WITH WORKS	0.0032
'DIVERSION'	0.0000

PIA: Personal Injury Accidents

ECONOMIC IMPACT ON ROAD USERS	
ROAD USER COSTS PER DAY	\$297
CONGESTED HOURS PER DAY*	0

\*Delays Exceeding User-Specified Maximum

**USH 51: CTH U TO STH 29 W (MARATHON COUNTY)  
NIGHTTIME CLOSURE  
NO DIVERSION ROUTE (MAX QUEUE METHOD)**

**AUGUST**  
Analyzed for 2009  
Construction Season

**GRAPHICAL REPRESENTATION OF TRAFFIC MODEL INPUT AND OUTPUT**  
**SUNDAY NORTHBOUND DIRECTION**

