

**USH 51: STH 29 W TO STH 29 E (MARATHON COUNTY)
NIGHTTIME 2 LANE CLOSURE
DIVERSION ROUTE: BUS 51 - STH 52**

MAY
Analyzed for 2009
Construction Season

SUMMARY OF TRAFFIC MODEL OUTPUT

SATURDAY SOUTHBOUND DIRECTION

TIME OF DAY	FLOWS AND CAPACITY IN VEH/HR										AVERAGE SPEEDS IN MPH				
	MAIN ROUTE		ALTERNATE ROUTE		SITE CAPA CITY	FLOW MAIN ROUTE	FLOW DIVER -TING	TOTAL DIVN FLOW	AV.DEL PER VEH (MINS)	AVERAGE QUEUE (VEH)	MAIN ROUTE		ALTERNATE ROUTE		
	DEMAND FLOW	PCT HEAVY	NORMAL FLOW	PCT HEAVY							WITHOUT WORK ZN	WITH WORK ZN	SITE	WITHOUT WORK ZN	WITH WORK ZN
MID-1 AM	268	0.0	111	0.0	1500	268	0	111	0.51	0	70.2	62.3	44.4	30.6	30.6
1-2 AM	126	0.0	70	0.0	1500	126	0	70	0.49	0	70.2	62.6	45.0	31.7	31.7
2-3 AM	117	0.0	54	0.0	1500	117	0	54	0.49	0	70.2	62.6	45.0	32.1	32.1
3-4 AM	155	0.0	51	0.0	1500	155	0	51	0.49	0	70.2	62.5	44.8	32.2	32.2
4-5 AM	158	0.0	95	0.0	1500	158	0	95	0.49	0	70.2	62.5	44.8	31.0	31.0
5-6 AM	318	0.0	127	0.0	1500	318	0	127	0.51	0	70.2	62.2	44.2	30.2	30.2
6-7 AM	581	0.0	214	0.0	1500	581	0	214	0.54	0	70.0	61.7	43.2	27.9	27.9
7-8 AM	866	0.0	338	0.0	1500	866	0	338	0.57	0	69.7	61.0	42.2	24.6	24.6
8-9 AM	1312	0.0	511	0.0	OFF	1312	0	511	0.00	0	69.1	69.1	69.1	20.4	20.4
9-10 AM	1454	0.0	655	0.0	OFF	1454	0	655	0.00	0	68.9	68.9	68.9	17.7	17.7
10-11 AM	1755	0.0	846	0.0	OFF	1755	0	846+	0.00	0	68.6	68.6	68.6	14.0	14.0
11A-NOON	1732	0.0	911	0.0	OFF	1732	0	911+	0.00	0	68.6	68.6	68.6	12.9	12.9
NOON-1PM	1821	0.0	957	0.0	OFF	1821	0	957+	0.00	0	68.5	68.5	68.5	12.5	12.5
1-2 PM	1780	0.0	893	0.0	OFF	1780	0	893+	0.00	0	68.5	68.5	68.5	13.0	13.0
2-3 PM	1563	0.0	809	0.0	OFF	1563	0	809+	0.00	0	68.8	68.8	68.8	14.7	14.7
3-4 PM	1725	0.0	871	0.0	OFF	1725	0	871+	0.00	0	68.6	68.6	68.6	13.4	13.4
4-5 PM	1510	0.0	820	0.0	OFF	1510	0	820+	0.00	0	68.9	68.9	68.9	14.5	14.5
5-6 PM	1362	0.0	742	0.0	OFF	1362	0	742	0.00	0	69.1	69.1	69.1	16.0	16.0
6-7 PM	1216	0.0	649	0.0	1500	1216	0	649	0.73	0	69.2	58.7	37.9	17.8	17.8
7-8 PM	1056	0.0	551	0.0	1500	1056	0	551	0.59	0	69.4	60.5	41.5	19.7	19.7
8-9 PM	850	0.0	491	0.0	1500	850	0	491	0.57	0	69.7	61.0	42.2	20.9	20.9
9-10 PM	699	0.0	363	0.0	1500	699	0	363	0.55	0	69.9	61.4	42.8	23.9	23.9
10-11 PM	490	0.0	280	0.0	1500	490	0	280	0.53	0	70.1	61.9	43.5	26.1	26.1
11PM-MID	296	0.0	185	0.0	1500	296	0	185	0.51	0	70.2	62.3	44.3	28.6	28.6

"OFF" INDICATES NO ROAD WORK (ALL LANES OPEN TO TRAFFIC)

+ INDICATES DIVERSION FLOW EXCEEDS USER-SPECIFIED WARNING LIMIT

----- SITE BREAKDOWN DELAYS -----	
BREAKDOWN DURATION (MINS)	0
RANGE OF QUEUE DELAY - MIN	0.0
(VEH-H) MAX	0.0
RANGE OF DIVN DELAY - MIN	0.0
(VEH-H) MAX	0.0
AV BREAKDOWNS PER DAY	0.00
AV QUEUE DELAY/DAY (VEH-H)	0.0
AV DIVN DELAY/DAY (VEH-H)	0.0
AV TOTAL DELAY/DAY (VEH-H)	0.0

----- SITE ACCIDENT DELAYS -----	
ACCIDENT DURATION (MINS)	0
RANGE OF QUEUE DELAY - MIN	0.0
(VEH-H) MAX	0.0
RANGE OF DIVN DELAY - MIN	0.0
(VEH-H) MAX	0.0
AV ACCIDENTS PER DAY	0.00
AV QUEUE DELAY/DAY (VEH-H)	0.0
AV DIVN DELAY/DAY (VEH-H)	0.0
AV TOTAL DELAY/DAY (VEH-H)	0.0

AVERAGE ACCIDENT NUMBERS (PIA/DAY)	
MAIN ROUTE WITHOUT WORKS	0.0174
MAIN ROUTE WITH WORKS	0.0169
DIVERSION	0.1102

PIA: Personal Injury Accidents

IMPACTS ON ROAD USERS	
ROAD USER COSTS PER DAY (DOLLARS)	\$977
CONGESTED HOURS PER DAY*	0

*Delays Exceeding 15 Minutes

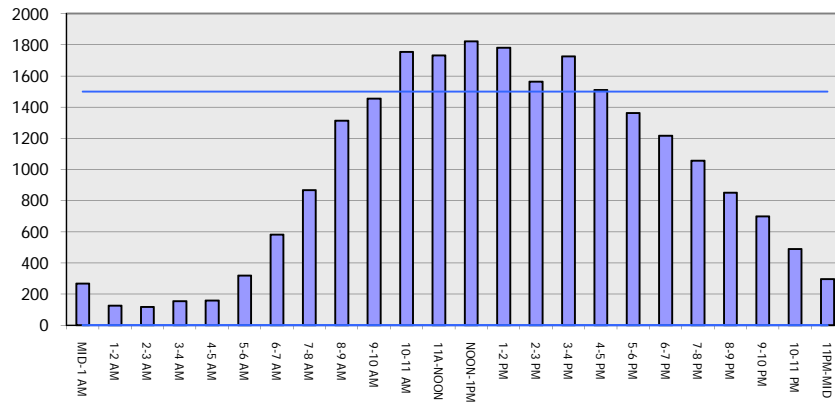
**USH 51: STH 29 W TO STH 29 E (MARATHON COUNTY)
 NIGHTTIME 2 LANE CLOSURE
 DIVERSION ROUTE: BUS 51 - STH 52**

MAY
 Analyzed for 2009
 Construction Season

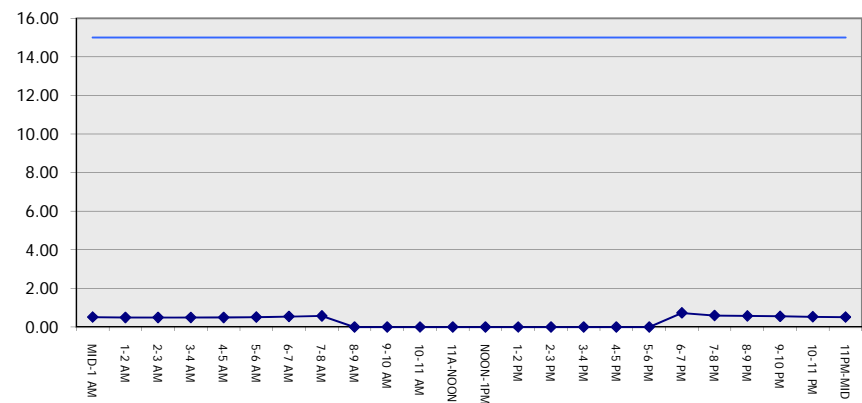
GRAPHICAL REPRESENTATION OF TRAFFIC MODEL INPUT AND OUTPUT

SATURDAY SOUTHBOUND DIRECTION

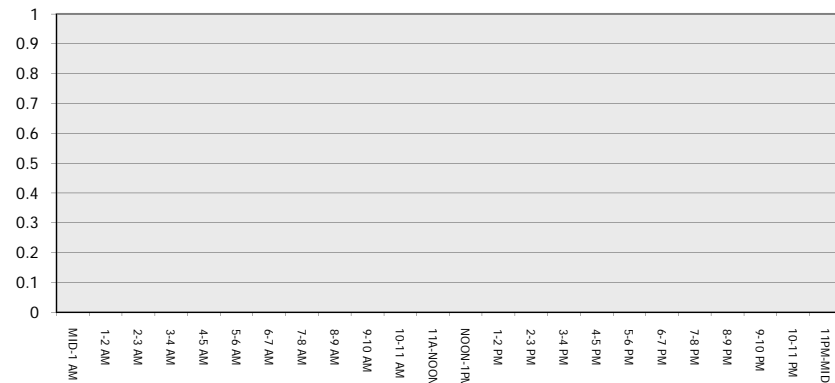
Main Route - Traffic Demand (Vehicles Per Hour)



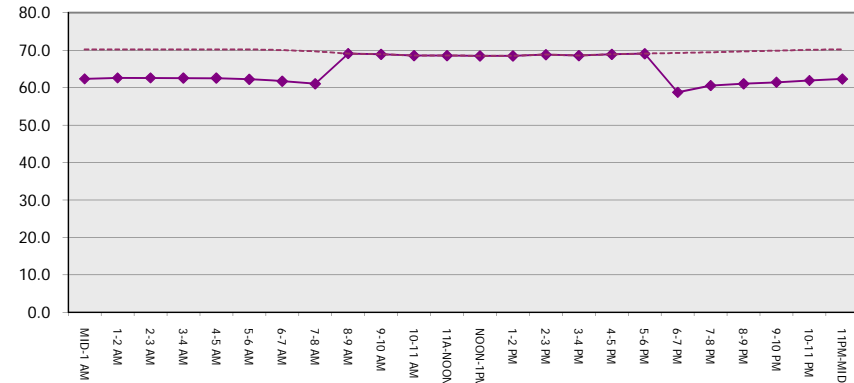
Main Route Average Delay Per Vehicle (Minutes)



Main Route - Average Queue Length (Vehicles)



Main Route - Average Speed (MPH)



USH 51: STH 29 W TO STH 29 E (MARATHON COUNTY) NIGHTTIME 2 LANE CLOSURE DIVERSION ROUTE: BUS 51 - STH 52	MAY
	Analyzed for 2009 Construction Season

SUMMARY OF TRAFFIC MODEL OUTPUT

SATURDAY NORTHBOUND DIRECTION

TIME OF DAY	FLOWS AND CAPACITY IN VEH/HR								AVERAGE SPEEDS IN MPH						
	MAIN		DIVERSION		SITE CAPA CITY	FLOW MAIN ROUTE	FLOW DIVER -TING	TOTAL DIVN FLOW	AV.DEL PER VEH (MINS)	AVERAGE QUEUE (VEH)	MAIN ROUTE		SITE	ALTERNATE ROUTE	
	DEMAND FLOW	PCT HEAVY	NORMAL FLOW	PCT HEAVY							WITHOUT WORK ZN	WITH WORK ZN		WITHOUT WORK ZN	WITH WORK ZN
MID-1 AM	470	0.0	110	0.0	1500	470	0	110	0.53	0	70.2	62.0	43.6	30.6	30.6
1-2 AM	254	0.0	81	0.0	1500	254	0	81	0.50	0	70.2	62.3	44.5	31.4	31.4
2-3 AM	207	0.0	76	0.0	1500	207	0	76	0.50	0	70.2	62.4	44.6	31.5	31.5
3-4 AM	184	0.0	65	0.0	1500	184	0	65	0.49	0	70.2	62.5	44.8	31.8	31.8
4-5 AM	164	0.0	93	0.0	1500	164	0	93	0.49	0	70.2	62.5	44.8	31.1	31.1
5-6 AM	344	0.0	187	0.0	1500	344	0	187	0.51	0	70.2	62.2	44.1	28.6	28.6
6-7 AM	635	0.0	324	0.0	1500	635	0	324	0.55	0	69.9	61.5	43.0	25.0	25.0
7-8 AM	1055	0.0	502	0.0	1499	1055	0	502	0.62	0	69.4	60.2	40.8	20.6	20.6
8-9 AM	1480	0.0	700	0.0	OFF	1480	0	700	0.00	0	68.9	68.9	68.9	16.8	16.8
9-10 AM	1901	0.0	866	0.0	OFF	1901	0	866+	0.00	0	68.4	68.4	68.4	13.5	13.5
10-11 AM	2204	0.0	994	0.0	OFF	2204	0	994+	0.00	0	68.0	68.0	68.0	12.2	12.2
11A-NOON	2153	0.0	1001	0.0	OFF	2153	0	1001+	0.00	0	68.1	68.1	68.1	12.1	12.1
NOON-1PM	2006	0.0	955	0.0	OFF	2006	0	955+	0.00	0	68.2	68.2	68.2	12.6	12.6
1-2 PM	1863	0.0	914	0.0	OFF	1863	0	914+	0.00	0	68.4	68.4	68.4	12.9	12.9
2-3 PM	1798	0.0	897	0.0	OFF	1798	0	897+	0.00	0	68.5	68.5	68.5	13.0	13.0
3-4 PM	1789	0.0	820	0.0	OFF	1789	0	820+	0.00	0	68.5	68.5	68.5	14.5	14.5
4-5 PM	1609	0.0	749	0.0	OFF	1609	0	749	0.00	0	68.7	68.7	68.7	15.9	15.9
5-6 PM	1455	0.0	664	0.0	OFF	1455	0	664	0.00	0	68.9	68.9	68.9	17.5	17.5
6-7 PM	1304	0.0	590	0.0	1500	1304	0	590	0.84	0	69.1	57.3	35.4	18.9	18.9
7-8 PM	1059	0.0	476	0.0	1500	1059	0	476	0.59	0	69.4	60.5	41.5	21.1	21.1
8-9 PM	864	0.0	386	0.0	1500	864	0	386	0.57	0	69.7	61.0	42.2	23.3	23.3
9-10 PM	798	0.0	305	0.0	1500	798	0	305	0.57	0	69.7	61.2	42.4	25.5	25.5
10-11 PM	561	0.0	241	0.0	1500	561	0	241	0.54	0	70.0	61.7	43.3	27.1	27.1
11PM-MID	436	0.0	171	0.0	1500	436	0	171	0.53	0	70.2	62.0	43.8	29.0	29.0

"OFF" INDICATES NO ROAD WORK (ALL LANES OPEN TO TRAFFIC)

+ INDICATES DIVERSION FLOW EXCEEDS USER-SPECIFIED WARNING LIMIT

----- SITE BREAKDOWN DELAYS -----	
BREAKDOWN DURATION (MINS)	0
RANGE OF QUEUE DELAY - MIN	0.0
(VEH-H) MAX	0.0
RANGE OF DIVN DELAY - MIN	0.0
(VEH-H) MAX	0.0
AV BREAKDOWNS PER DAY	0.00
AV QUEUE DELAY/DAY (VEH-H)	0.0
AV DIVN DELAY/DAY (VEH-H)	0.0
AV TOTAL DELAY/DAY (VEH-H)	0.0

----- SITE ACCIDENT DELAYS -----	
ACCIDENT DURATION (MINS)	0
RANGE OF QUEUE DELAY - MIN	0.0
(VEH-H) MAX	0.0
RANGE OF DIVN DELAY - MIN	0.0
(VEH-H) MAX	0.0
AV ACCIDENTS PER DAY	0.00
AV QUEUE DELAY/DAY (VEH-H)	0.0
AV DIVN DELAY/DAY (VEH-H)	0.0
AV TOTAL DELAY/DAY (VEH-H)	0.0

AVERAGE ACCIDENT NUMBERS (PIA/DAY)	
MAIN ROUTE WITHOUT WORKS	0.0199
MAIN ROUTE WITH WORKS	0.0193
DIVERSION	0.1156

PIA: Personal Injury Accidents

IMPACTS ON ROAD USERS	
ROAD USER COSTS PER DAY (DOLLARS)	\$1,179
CONGESTED HOURS PER DAY*	0

*Delays Exceeding 15 Minutes

**USH 51: STH 29 W TO STH 29 E (MARATHON COUNTY)
 NIGHTTIME 2 LANE CLOSURE
 DIVERSION ROUTE: BUS 51 - STH 52**

MAY
 Analyzed for 2009
 Construction Season

GRAPHICAL REPRESENTATION OF TRAFFIC MODEL INPUT AND OUTPUT
SATURDAY NORTHBOUND DIRECTION

