

USH 51: STH 29 W TO STH 29 E (MARATHON COUNTY) NIGHTTIME 2 LANE CLOSURE DIVERSION ROUTE: BUS 51 - STH 52	MAY
	Analyzed for 2009 Construction Season

SUMMARY OF TRAFFIC MODEL OUTPUT

FRIDAY SOUTHBOUND DIRECTION

TIME OF DAY	FLOWS AND CAPACITY IN VEH/HR						AVERAGE SPEEDS IN MPH								
	MAIN ROUTE		ALTERNATE ROUTE		SITE CAPA CITY	FLOW MAIN ROUTE	FLOW DIVER -TING	TOTAL DIVN FLOW	AV.DEL PER VEH (MINS)	AVERAGE QUEUE (VEH)	MAIN ROUTE		ALTERNATE ROUTE		
	DEMAND FLOW	PCT HEAVY	NORMAL FLOW	PCT HEAVY							WITHOUT WORK ZN	WITH WORK ZN	SITE	WITHOUT WORK ZN	WITH WORK ZN
MID-1 AM	189	0.0	84	0.0	1500	189	0	84	0.50	0	70.2	62.5	44.7	31.3	31.3
1-2 AM	110	0.0	62	0.0	1500	110	0	62	0.49	0	70.2	62.6	45.0	31.9	31.9
2-3 AM	107	0.0	49	0.0	1500	107	0	49	0.49	0	70.2	62.6	45.1	32.2	32.2
3-4 AM	173	0.0	61	0.0	1500	173	0	61	0.49	0	70.2	62.5	44.8	31.9	31.9
4-5 AM	343	0.0	156	0.0	1500	343	0	156	0.51	0	70.2	62.2	44.1	29.4	29.4
5-6 AM	757	0.0	342	0.0	OFF	757	0	342	0.00	0	69.8	69.8	69.8	24.5	24.5
6-7 AM	1702	0.0	737	0.0	OFF	1702	0	737	0.00	0	68.6	68.6	68.6	16.1	16.1
7-8 AM	1767	0.0	859	0.0	OFF	1767	0	859+	0.00	0	68.6	68.6	68.6	13.7	13.7
8-9 AM	1457	0.0	678	0.0	OFF	1457	0	678	0.00	0	68.9	68.9	68.9	17.3	17.3
9-10 AM	1492	0.0	703	0.0	OFF	1492	0	703	0.00	0	68.9	68.9	68.9	16.8	16.8
10-11 AM	1708	0.0	803	0.0	OFF	1708	0	803+	0.00	0	68.6	68.6	68.6	14.8	14.8
11A-NOON	1814	0.0	954	0.0	OFF	1814	0	954+	0.00	0	68.5	68.5	68.5	12.6	12.6
NOON-1PM	1918	0.0	1033	0.0	OFF	1918	0	1033+	0.00	0	68.4	68.4	68.4	11.7	11.7
1-2 PM	1996	0.0	1062	0.0	OFF	1996	0	1062+	0.00	0	68.2	68.2	68.2	11.2	11.2
2-3 PM	2275	0.0	1283	0.0	OFF	2275	0	1283+	0.00	0	67.9	67.9	67.9	11.2	11.2
3-4 PM	2616	0.0	1479	0.0	OFF	2616	0	1479+	0.00	0	67.5	67.5	67.5	11.2	11.2
4-5 PM	2763	0.0	1529	0.0	OFF	2763	0	1529+	0.00	0	67.3	67.3	67.3	11.2	11.2
5-6 PM	2558	0.0	1279	0.0	OFF	2558	0	1279+	0.00	0	67.6	67.6	67.6	11.2	11.2
6-7 PM	1842	0.0	911	0.0	OFF	1842	0	911+	0.00	0	68.4	68.4	68.4	12.9	12.9
7-8 PM	1468	0.0	741	0.0	1499	1468	0	741	1.32	7	68.9	52.1	31.9	16.1	16.1
8-9 PM	1233	0.0	634	0.0	1500	1233	0	634	0.75	0	69.2	58.4	37.4	18.1	18.1
9-10 PM	855	0.0	471	0.0	1500	855	0	471	0.57	0	69.7	61.0	42.2	21.2	21.2
10-11 PM	630	0.0	371	0.0	1500	630	0	371	0.55	0	69.9	61.6	43.0	23.7	23.7
11PM-MID	377	0.0	223	0.0	1500	377	0	223	0.52	0	70.2	62.2	44.0	27.6	27.6

"OFF" INDICATES NO ROAD WORK (ALL LANES OPEN TO TRAFFIC)

+ INDICATES DIVERSION FLOW EXCEEDS USER-SPECIFIED WARNING LIMIT

----- SITE BREAKDOWN DELAYS -----	
BREAKDOWN DURATION (MINS)	0
RANGE OF QUEUE DELAY - MIN	0.0
(VEH-H) MAX	0.0
RANGE OF DIVN DELAY - MIN	0.0
(VEH-H) MAX	0.0
AV BREAKDOWNS PER DAY	0.00
AV QUEUE DELAY/DAY (VEH-H)	0.0
AV DIVN DELAY/DAY (VEH-H)	0.0
AV TOTAL DELAY/DAY (VEH-H)	0.0

----- SITE ACCIDENT DELAYS -----	
ACCIDENT DURATION (MINS)	0
RANGE OF QUEUE DELAY - MIN	0.0
(VEH-H) MAX	0.0
RANGE OF DIVN DELAY - MIN	0.0
(VEH-H) MAX	0.0
AV ACCIDENTS PER DAY	0.00
AV QUEUE DELAY/DAY (VEH-H)	0.0
AV DIVN DELAY/DAY (VEH-H)	0.0
AV TOTAL DELAY/DAY (VEH-H)	0.0

AVERAGE ACCIDENT NUMBERS (PIA/DAY)	
MAIN ROUTE WITHOUT WORKS	0.0240
MAIN ROUTE WITH WORKS	0.0237
DIVERSION	0.1568

PIA: Personal Injury Accidents

IMPACTS ON ROAD USERS	
ROAD USER COSTS PER DAY (DOLLARS)	\$1,183
CONGESTED HOURS PER DAY*	0

*Delays Exceeding 15 Minutes

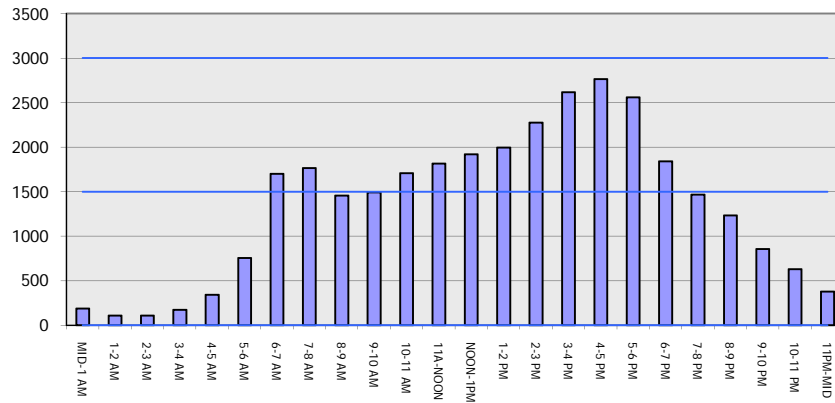
**USH 51: STH 29 W TO STH 29 E (MARATHON COUNTY)
 NIGHTTIME 2 LANE CLOSURE
 DIVERSION ROUTE: BUS 51 - STH 52**

MAY
 Analyzed for 2009
 Construction Season

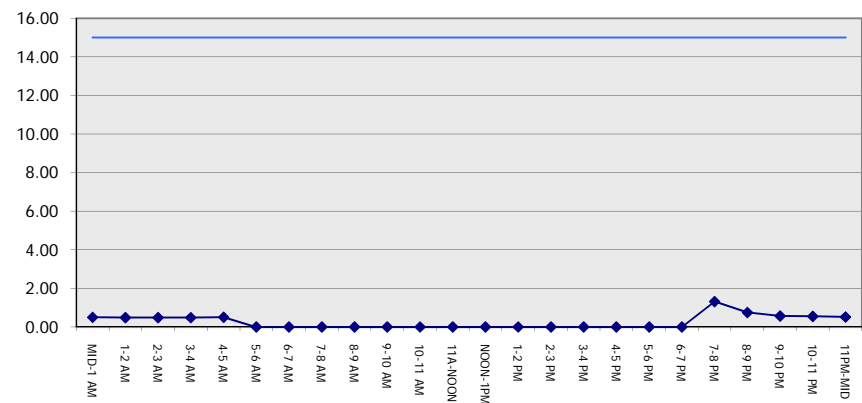
GRAPHICAL REPRESENTATION OF TRAFFIC MODEL INPUT AND OUTPUT

FRIDAY SOUTHBOUND DIRECTION

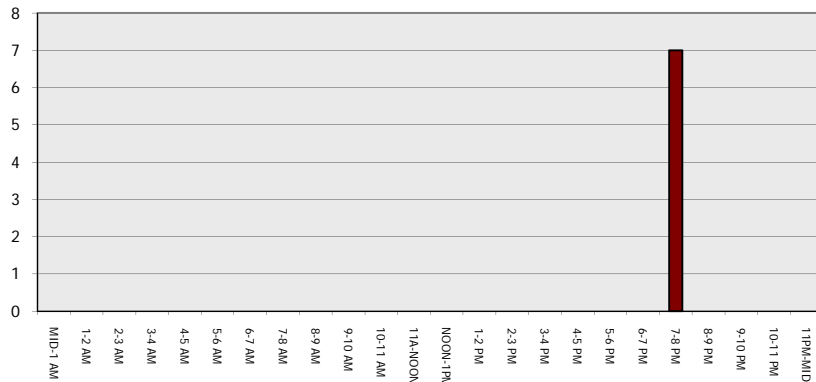
Main Route - Traffic Demand (Vehicles Per Hour)



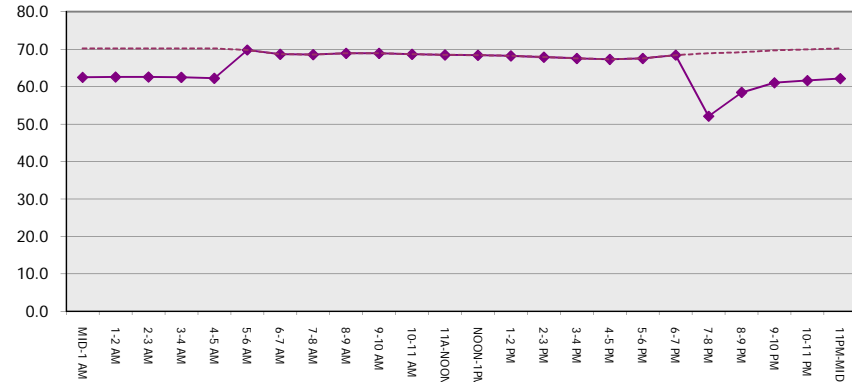
Main Route Average Delay Per Vehicle (Minutes)



Main Route - Average Queue Length (Vehicles)



Main Route - Average Speed (MPH)



USH 51: STH 29 W TO STH 29 E (MARATHON COUNTY) NIGHTTIME 2 LANE CLOSURE DIVERSION ROUTE: BUS 51 - STH 52	MAY
	Analyzed for 2009 Construction Season

SUMMARY OF TRAFFIC MODEL OUTPUT	
FRIDAY	NORTHBOUND DIRECTION

TIME OF DAY	FLOWS AND CAPACITY IN VEH/HR								AVERAGE SPEEDS IN MPH						
	MAIN		DIVERSION		SITE CAPA CITY	FLOW MAIN ROUTE	FLOW DIVER -TING	TOTAL DIVN FLOW	AV.DEL PER VEH (MINS)	AVERAGE QUEUE (VEH)	MAIN ROUTE		SITE	ALTERNATE ROUTE	
	DEMAND FLOW	PCT HEAVY	NORMAL FLOW	PCT HEAVY							WITHOUT WORK ZN	WITH WORK ZN		WITHOUT WORK ZN	WITH WORK ZN
MID-1 AM	343	0.0	76	0.0	1500	343	0	76	0.51	0	70.2	62.2	44.1	31.5	31.5
1-2 AM	197	0.0	71	0.0	1500	197	0	71	0.50	0	70.2	62.5	44.7	31.7	31.7
2-3 AM	162	0.0	64	0.0	1500	162	0	64	0.49	0	70.2	62.5	44.8	31.9	31.9
3-4 AM	206	0.0	86	0.0	1500	206	0	86	0.50	0	70.2	62.4	44.6	31.2	31.2
4-5 AM	272	0.0	176	0.0	1500	272	0	176	0.51	0	70.2	62.3	44.4	28.9	28.9
5-6 AM	782	0.0	483	0.0	OFF	782	0	483	0.00	0	69.7	69.7	69.7	21.0	21.0
6-7 AM	1807	0.0	1054	0.0	OFF	1807	0	1054+	0.00	0	68.5	68.5	68.5	11.4	11.4
7-8 AM	2321	0.0	1344	0.0	OFF	2321	0	1344+	0.00	0	67.9	67.9	67.9	11.2	11.2
8-9 AM	1886	0.0	980	0.0	OFF	1886	0	980+	0.00	0	68.4	68.4	68.4	12.4	12.4
9-10 AM	2091	0.0	916	0.0	OFF	2091	0	916+	0.00	0	68.1	68.1	68.1	12.9	12.9
10-11 AM	2260	0.0	971	0.0	OFF	2260	0	971+	0.00	0	67.9	67.9	67.9	12.5	12.5
11A-NOON	2383	0.0	995	0.0	OFF	2383	0	995+	0.00	0	67.8	67.8	67.8	12.2	12.2
NOON-1PM	2501	0.0	1057	0.0	OFF	2501	0	1057+	0.00	0	67.6	67.6	67.6	11.3	11.3
1-2 PM	2822	0.0	1106	0.0	OFF	2822	0	1106+	0.00	0	67.3	67.3	67.3	11.2	11.2
2-3 PM	2996	0.0	1228	0.0	OFF	2996	0	1228+	0.00	0	67.0	67.0	67.0	11.2	11.2
3-4 PM	3561	0.0	1394	0.0	OFF	3561	0	1394+	0.00	0	66.3	66.3	66.3	11.2	11.2
4-5 PM	3496	0.0	1439	0.0	OFF	3496	0	1439+	0.00	0	66.4	66.4	66.4	11.2	11.2
5-6 PM	3491	0.0	1236	0.0	OFF	3491	0	1236+	0.00	0	66.4	66.4	66.4	11.2	11.2
6-7 PM	3068	0.0	820	0.0	OFF	3068	0	820+	0.00	0	66.9	66.9	66.9	14.5	14.5
7-8 PM	2749	0.0	586	0.0	1499	2363	386	972+	19.79	574	67.3	11.7	31.4	19.0	14.7
8-9 PM	2446	0.0	405	0.0	1500	1495	951	1356+	32.26	817	67.7	7.8	30.8	22.8	11.2
9-10 PM	2067	0.0	311	0.0	1500	1305	762	1074+	30.37	770	68.2	8.1	30.8	25.3	11.8
10-11 PM	1474	0.0	263	0.0	1499	1112	362	625	18.04	464	68.9	12.7	30.8	26.6	18.4
11PM-MID	827	0.0	177	0.0	1499	827	0	177	2.17	70	69.7	45.4	41.0	28.8	28.8

"OFF" INDICATES NO ROAD WORK (ALL LANES OPEN TO TRAFFIC)

+ INDICATES DIVERSION FLOW EXCEEDS USER-SPECIFIED WARNING LIMIT

----- SITE BREAKDOWN DELAYS -----	
BREAKDOWN DURATION (MINS)	0
RANGE OF QUEUE DELAY - MIN	0.0
(VEH-H) MAX	0.0
RANGE OF DIVN DELAY - MIN	0.0
(VEH-H) MAX	0.0
AV BREAKDOWNS PER DAY	0.00
AV QUEUE DELAY/DAY (VEH-H)	0.0
AV DIVN DELAY/DAY (VEH-H)	0.0
AV TOTAL DELAY/DAY (VEH-H)	0.0

----- SITE ACCIDENT DELAYS -----	
ACCIDENT DURATION (MINS)	0
RANGE OF QUEUE DELAY - MIN	0.0
(VEH-H) MAX	0.0
RANGE OF DIVN DELAY - MIN	0.0
(VEH-H) MAX	0.0
AV ACCIDENTS PER DAY	0.00
AV QUEUE DELAY/DAY (VEH-H)	0.0
AV DIVN DELAY/DAY (VEH-H)	0.0
AV TOTAL DELAY/DAY (VEH-H)	0.0

AVERAGE ACCIDENT NUMBERS (PIA/DAY)	
MAIN ROUTE WITHOUT WORKS	0.0345
MAIN ROUTE WITH WORKS	0.0322
DIVERSION	0.1872

PIA: Personal Injury Accidents

IMPACTS ON ROAD USERS	
ROAD USER COSTS PER DAY (DOLLARS)	\$61,172
CONGESTED HOURS PER DAY*	4

*Delays Exceeding 15 Minutes

**USH 51: STH 29 W TO STH 29 E (MARATHON COUNTY)
 NIGHTTIME 2 LANE CLOSURE
 DIVERSION ROUTE: BUS 51 - STH 52**

MAY
 Analyzed for 2009
 Construction Season

GRAPHICAL REPRESENTATION OF TRAFFIC MODEL INPUT AND OUTPUT
FRIDAY NORTHBOUND DIRECTION

