

IH 39: STH 29 E TO STH 34/CTH C (MARATHON COUNTY) NIGHTTIME CLOSURE DIVERSION ROUTE: BUS 51 - STH 29	MAY
	Analyzed for 2009 Construction Season

SUMMARY OF TRAFFIC MODEL OUTPUT

FRIDAY SOUTHBOUND DIRECTION

TIME OF DAY	FLOWS AND CAPACITY IN VEH/HR						AVERAGE SPEEDS IN MPH								
	MAIN ROUTE		ALTERNATE ROUTE		SITE CAPA CITY	FLOW MAIN ROUTE	FLOW DIVER -TING	TOTAL DIVN FLOW	AV.DEL PER VEH (MINS)	AVERAGE QUEUE (VEH)	MAIN ROUTE		ALTERNATE ROUTE		
	DEMAND FLOW	PCT HEAVY	NORMAL FLOW	PCT HEAVY							WITHOUT WORK ZN	WITH WORK ZN	SITE	WITHOUT WORK ZN	WITH WORK ZN
MID-1 AM	111	0.0	57	0.0	1500	111	0	57	0.43	0	66.2	55.2	45.0	28.5	28.5
1-2 AM	65	0.0	33	0.0	1500	65	0	33	0.43	0	66.3	55.3	45.2	29.1	29.1
2-3 AM	63	0.0	32	0.0	1500	63	0	32	0.43	0	66.3	55.3	45.3	29.1	29.1
3-4 AM	102	0.0	51	0.0	1500	102	0	51	0.43	0	66.2	55.2	45.1	28.6	28.6
4-5 AM	202	0.0	103	0.0	1500	202	0	103	0.44	0	66.0	54.9	44.6	27.4	27.4
5-6 AM	445	0.0	228	0.0	OFF	445	0	228	0.00	0	65.6	65.6	65.6	24.5	24.5
6-7 AM	1000	0.0	511	0.0	OFF	1000	0	511	0.00	0	64.5	64.5	64.5	18.3	18.3
7-8 AM	1038	0.0	530	0.0	OFF	1038	0	530	0.00	0	64.5	64.5	64.5	17.9	17.9
8-9 AM	856	0.0	438	0.0	OFF	856	0	438	0.00	0	64.8	64.8	64.8	19.6	19.6
9-10 AM	877	0.0	448	0.0	OFF	877	0	448	0.00	0	64.8	64.8	64.8	19.4	19.4
10-11 AM	1003	0.0	513	0.0	OFF	1003	0	513	0.00	0	64.5	64.5	64.5	18.3	18.3
11A-NOON	1066	0.0	545	0.0	OFF	1066	0	545	0.00	0	64.4	64.4	64.4	17.7	17.7
NOON-1PM	1127	0.0	575	0.0	OFF	1127	0	575	0.00	0	64.3	64.3	64.3	17.1	17.1
1-2 PM	1173	0.0	599	0.0	OFF	1173	0	599	0.00	0	64.2	64.2	64.2	16.7	16.7
2-3 PM	1337	0.0	683	0.0	OFF	1337	0	683	0.00	0	63.9	63.9	63.9	15.2	15.2
3-4 PM	1538	0.0	784	0.0	OFF	1538	0	784+	0.00	0	63.5	63.5	63.5	13.4	13.4
4-5 PM	1624	0.0	830	0.0	OFF	1624	0	830+	0.00	0	63.3	63.3	63.3	12.7	12.7
5-6 PM	1504	0.0	768	0.0	OFF	1504	0	768+	0.00	0	63.6	63.6	63.6	13.6	13.6
6-7 PM	1083	0.0	553	0.0	OFF	1083	0	553	0.00	0	64.4	64.4	64.4	17.5	17.5
7-8 PM	863	0.0	441	0.0	1500	863	0	441	0.51	0	64.8	52.8	42.2	19.6	19.6
8-9 PM	725	0.0	370	0.0	1500	725	0	370	0.49	0	65.0	53.2	42.7	21.2	21.2
9-10 PM	503	0.0	256	0.0	1500	503	0	256	0.47	0	65.5	53.9	43.5	23.8	23.8
10-11 PM	371	0.0	189	0.0	1500	371	0	189	0.46	0	65.7	54.3	44.0	25.4	25.4
11PM-MID	221	0.0	113	0.0	1500	221	0	113	0.44	0	66.0	54.8	44.6	27.1	27.1

"OFF" INDICATES NO ROAD WORK (ALL LANES OPEN TO TRAFFIC)

+ INDICATES DIVERSION FLOW EXCEEDS USER-SPECIFIED WARNING LIMIT

----- SITE BREAKDOWN DELAYS -----	
BREAKDOWN DURATION (MINS)	0
RANGE OF QUEUE DELAY - MIN	0.0
(VEH-H) MAX	0.0
RANGE OF DIVN DELAY - MIN	0.0
(VEH-H) MAX	0.0
AV BREAKDOWNS PER DAY	0.00
AV QUEUE DELAY/DAY (VEH-H)	0.0
AV DIVN DELAY/DAY (VEH-H)	0.0
AV TOTAL DELAY/DAY (VEH-H)	0.0

----- SITE ACCIDENT DELAYS -----	
ACCIDENT DURATION (MINS)	0
RANGE OF QUEUE DELAY - MIN	0.0
(VEH-H) MAX	0.0
RANGE OF DIVN DELAY - MIN	0.0
(VEH-H) MAX	0.0
AV ACCIDENTS PER DAY	0.00
AV QUEUE DELAY/DAY (VEH-H)	0.0
AV DIVN DELAY/DAY (VEH-H)	0.0
AV TOTAL DELAY/DAY (VEH-H)	0.0

AVERAGE ACCIDENT NUMBERS (PIA/DAY)	
MAIN ROUTE WITHOUT WORKS	0.0072
MAIN ROUTE WITH WORKS	0.0070
DIVERSION	0.0556

PIA: Personal Injury Accidents

IMPACTS ON ROAD USERS	
ROAD USER COSTS PER DAY (DOLLARS)	\$366
CONGESTED HOURS PER DAY*	0

*Delays Exceeding 15 Minutes

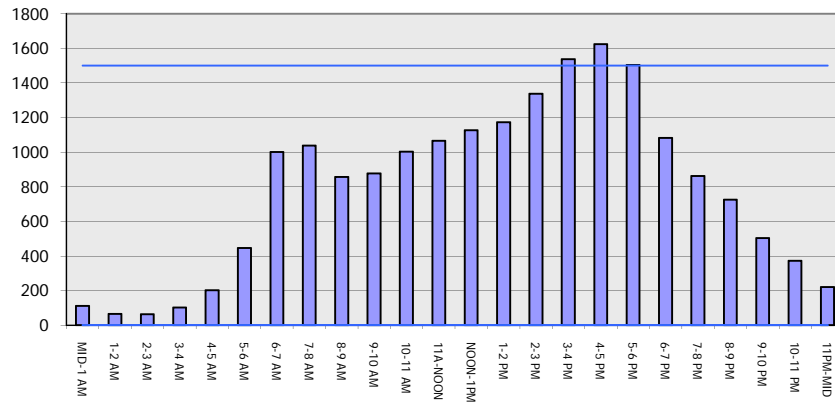
IH 39: STH 29 E TO STH 34/CTH C (MARATHON COUNTY)
NIGHTTIME CLOSURE
DIVERSION ROUTE: BUS 51 - STH 29

MAY
 Analyzed for 2009
 Construction Season

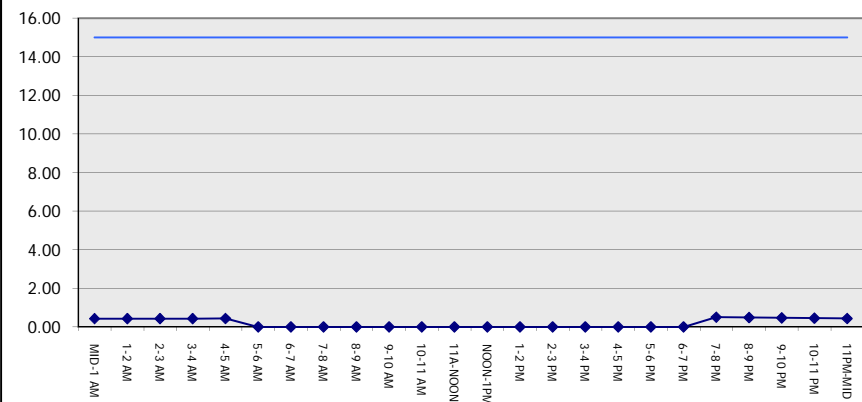
GRAPHICAL REPRESENTATION OF TRAFFIC MODEL INPUT AND OUTPUT

FRIDAY SOUTHBOUND DIRECTION

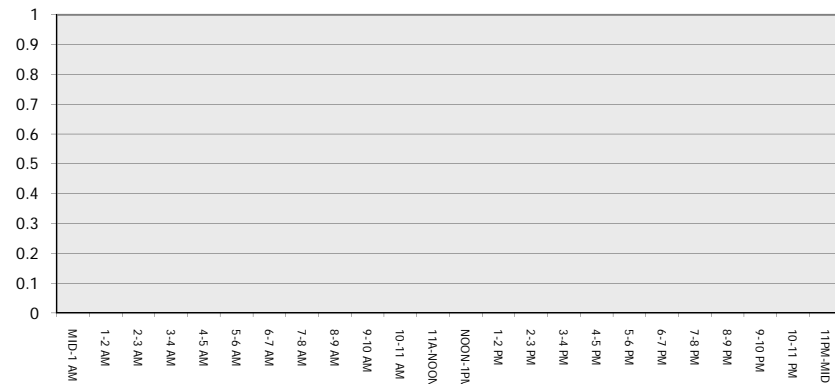
Main Route - Traffic Demand (Vehicles Per Hour)



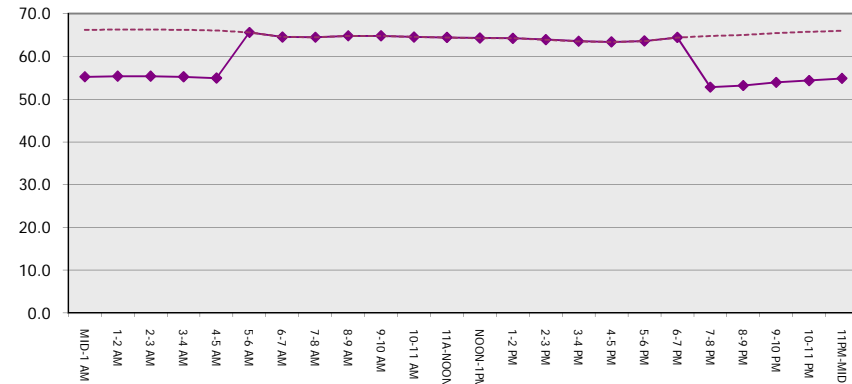
Main Route Average Delay Per Vehicle (Minutes)



Main Route - Average Queue Length (Vehicles)



Main Route - Average Speed (MPH)



IH 39: STH 29 E TO STH 34/CTH C (MARATHON COUNTY) NIGHTTIME CLOSURE DIVERSION ROUTE: BUS 51 - STH 29	MAY
	Analyzed for 2009 Construction Season

SUMMARY OF TRAFFIC MODEL OUTPUT	
FRIDAY	NORTHBOUND DIRECTION

TIME OF DAY	FLOWS AND CAPACITY IN VEH/HR								AVERAGE SPEEDS IN MPH						
	MAIN		DIVERSION		SITE CAPA CITY	FLOW MAIN ROUTE	FLOW DIVER -TING	TOTAL DIVN FLOW	AV.DEL PER VEH (MINS)	AVERAGE QUEUE (VEH)	MAIN ROUTE		SITE	ALTERNATE ROUTE	
	DEMAND FLOW	PCT HEAVY	NORMAL FLOW	PCT HEAVY							WITHOUT WORK ZN	WITH WORK ZN		WITHOUT WORK ZN	WITH WORK ZN
MID-1 AM	202	0.0	103	0.0	1500	202	0	103	0.44	0	66.0	54.9	44.6	27.4	27.4
1-2 AM	115	0.0	59	0.0	1500	115	0	59	0.43	0	66.2	55.1	45.0	28.4	28.4
2-3 AM	96	0.0	48	0.0	1500	96	0	48	0.43	0	66.2	55.2	45.1	28.7	28.7
3-4 AM	121	0.0	62	0.0	1500	121	0	62	0.43	0	66.1	55.1	45.0	28.4	28.4
4-5 AM	160	0.0	81	0.0	1500	160	0	81	0.44	0	66.1	55.0	44.8	27.9	27.9
5-6 AM	460	0.0	235	0.0	OFF	460	0	235	0.00	0	65.5	65.5	65.5	24.3	24.3
6-7 AM	1062	0.0	543	0.0	OFF	1062	0	543	0.00	0	64.4	64.4	64.4	17.7	17.7
7-8 AM	1365	0.0	697	0.0	OFF	1365	0	697	0.00	0	63.8	63.8	63.8	14.9	14.9
8-9 AM	1108	0.0	566	0.0	OFF	1108	0	566	0.00	0	64.3	64.3	64.3	17.3	17.3
9-10 AM	1229	0.0	628	0.0	OFF	1229	0	628	0.00	0	64.1	64.1	64.1	16.1	16.1
10-11 AM	1329	0.0	678	0.0	OFF	1329	0	678	0.00	0	63.9	63.9	63.9	15.2	15.2
11A-NOON	1401	0.0	715	0.0	OFF	1401	0	715	0.00	0	63.8	63.8	63.8	14.6	14.6
NOON-1PM	1470	0.0	750	0.0	OFF	1470	0	750	0.00	0	63.7	63.7	63.7	13.9	13.9
1-2 PM	1659	0.0	847	0.0	OFF	1659	0	847+	0.00	0	63.3	63.3	63.3	12.5	12.5
2-3 PM	1761	0.0	899	0.0	OFF	1761	0	899+	0.00	0	63.1	63.1	63.1	11.7	11.7
3-4 PM	2093	0.0	1069	0.0	OFF	2093	0	1069+	0.00	0	62.5	62.5	62.5	10.6	10.6
4-5 PM	2055	0.0	1049	0.0	OFF	2055	0	1049+	0.00	0	62.5	62.5	62.5	10.6	10.6
5-6 PM	2052	0.0	1048	0.0	OFF	2052	0	1048+	0.00	0	62.5	62.5	62.5	10.6	10.6
6-7 PM	1803	0.0	920	0.0	OFF	1803	0	920+	0.00	0	63.0	63.0	63.0	11.4	11.4
7-8 PM	1616	0.0	825	0.0	1499	1616	0	825+	3.39	69	63.4	25.4	30.8	12.8	12.8
8-9 PM	1438	0.0	734	0.0	1499	1438	0	734	4.57	97	63.7	21.1	30.9	14.2	14.2
9-10 PM	1215	0.0	621	0.0	1500	1215	0	621	0.85	6	64.1	46.6	37.8	16.3	16.3
10-11 PM	867	0.0	443	0.0	1500	867	0	443	0.51	0	64.8	52.7	42.2	19.6	19.6
11PM-MID	486	0.0	248	0.0	1500	486	0	248	0.47	0	65.5	54.0	43.5	24.0	24.0

"OFF" INDICATES NO ROAD WORK (ALL LANES OPEN TO TRAFFIC)

+ INDICATES DIVERSION FLOW EXCEEDS USER-SPECIFIED WARNING LIMIT

----- SITE BREAKDOWN DELAYS -----	
BREAKDOWN DURATION (MINS)	0
RANGE OF QUEUE DELAY - MIN	0.0
(VEH-H) MAX	0.0
RANGE OF DIVN DELAY - MIN	0.0
(VEH-H) MAX	0.0
AV BREAKDOWNS PER DAY	0.00
AV QUEUE DELAY/DAY (VEH-H)	0.0
AV DIVN DELAY/DAY (VEH-H)	0.0
AV TOTAL DELAY/DAY (VEH-H)	0.0

----- SITE ACCIDENT DELAYS -----	
ACCIDENT DURATION (MINS)	0
RANGE OF QUEUE DELAY - MIN	0.0
(VEH-H) MAX	0.0
RANGE OF DIVN DELAY - MIN	0.0
(VEH-H) MAX	0.0
AV ACCIDENTS PER DAY	0.00
AV QUEUE DELAY/DAY (VEH-H)	0.0
AV DIVN DELAY/DAY (VEH-H)	0.0
AV TOTAL DELAY/DAY (VEH-H)	0.0

AVERAGE ACCIDENT NUMBERS (PIA/DAY)	
MAIN ROUTE WITHOUT WORKS	0.0104
MAIN ROUTE WITH WORKS	0.0100
DIVERSION	0.0799

PIA: Personal Injury Accidents

IMPACTS ON ROAD USERS	
ROAD USER COSTS PER DAY (DOLLARS)	\$3,352
CONGESTED HOURS PER DAY*	0

*Delays Exceeding 15 Minutes

**IH 39: STH 29 E TO STH 34/CTH C (MARATHON COUNTY)
NIGHTTIME CLOSURE
DIVERSION ROUTE: BUS 51 - STH 29**

MAY
Analyzed for 2009
Construction Season

GRAPHICAL REPRESENTATION OF TRAFFIC MODEL INPUT AND OUTPUT
FRIDAY NORTHBOUND DIRECTION

